



Chipsmall Limited consists of a professional team with an average of over 10 year of expertise in the distribution of electronic components. Based in Hongkong, we have already established firm and mutual-benefit business relationships with customers from,Europe,America and south Asia,supplying obsolete and hard-to-find components to meet their specific needs.

With the principle of “Quality Parts,Customers Priority,Honest Operation,and Considerate Service”,our business mainly focus on the distribution of electronic components. Line cards we deal with include Microchip,ALPS,ROHM,Xilinx,Pulse,ON,Everlight and Freescale. Main products comprise IC,Modules,Potentiometer,IC Socket,Relay,Connector.Our parts cover such applications as commercial,industrial, and automotives areas.

We are looking forward to setting up business relationship with you and hope to provide you with the best service and solution. Let us make a better world for our industry!



## Contact us

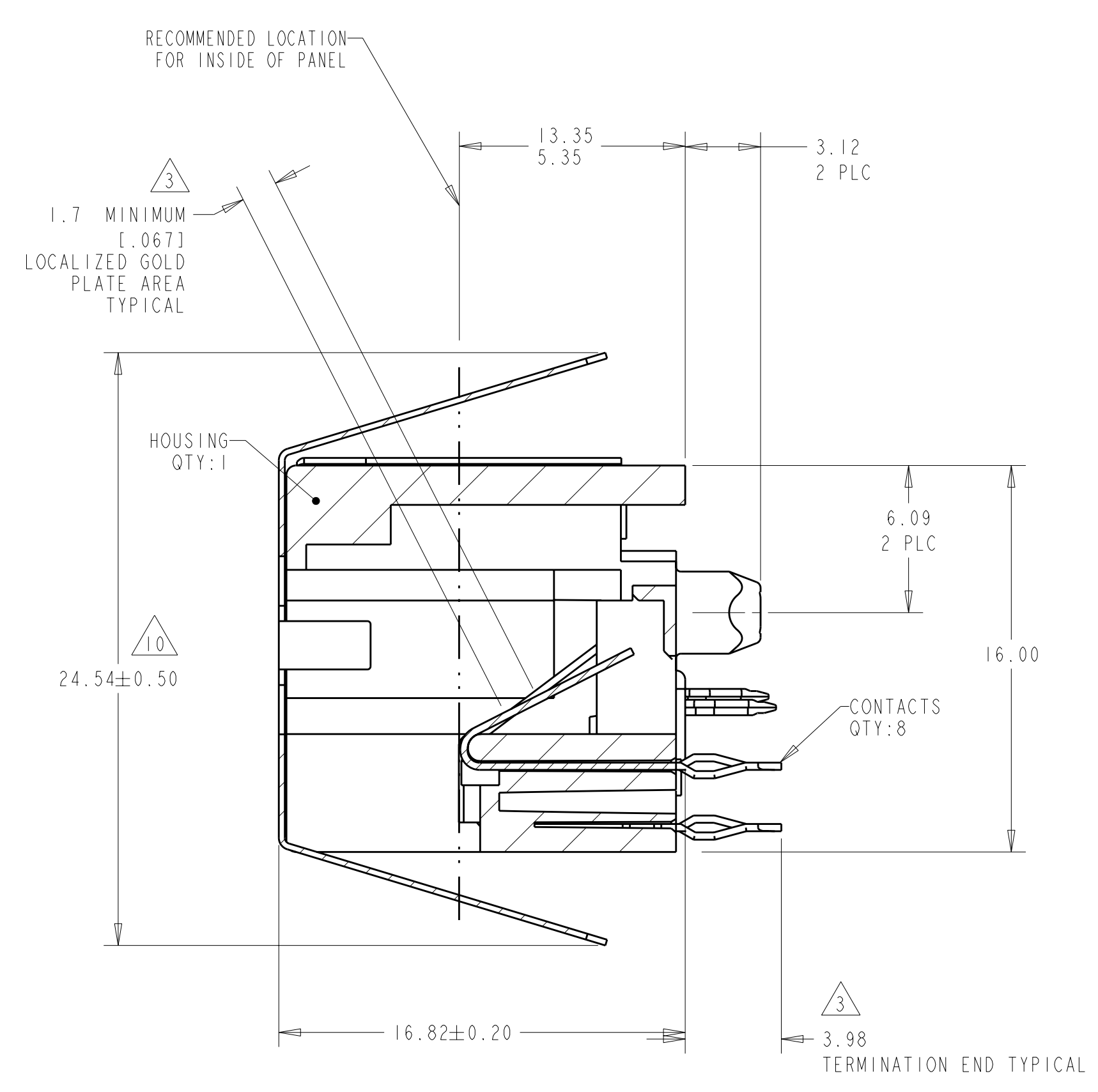
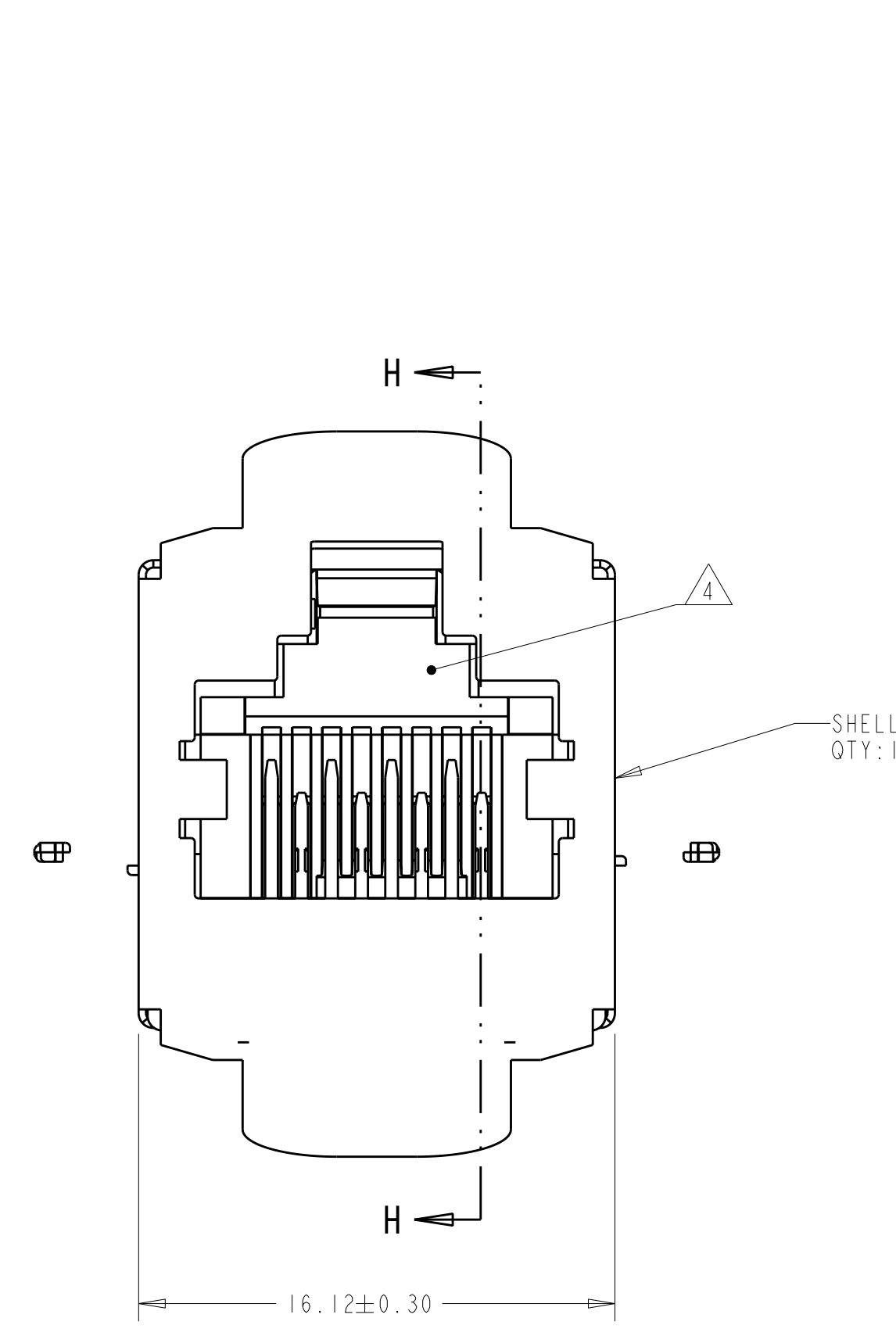
Tel: +86-755-8981 8866 Fax: +86-755-8427 6832

Email & Skype: info@chipsmall.com Web: www.chipsmall.com

Address: A1208, Overseas Decoration Building, #122 Zhenhua RD., Futian, Shenzhen, China

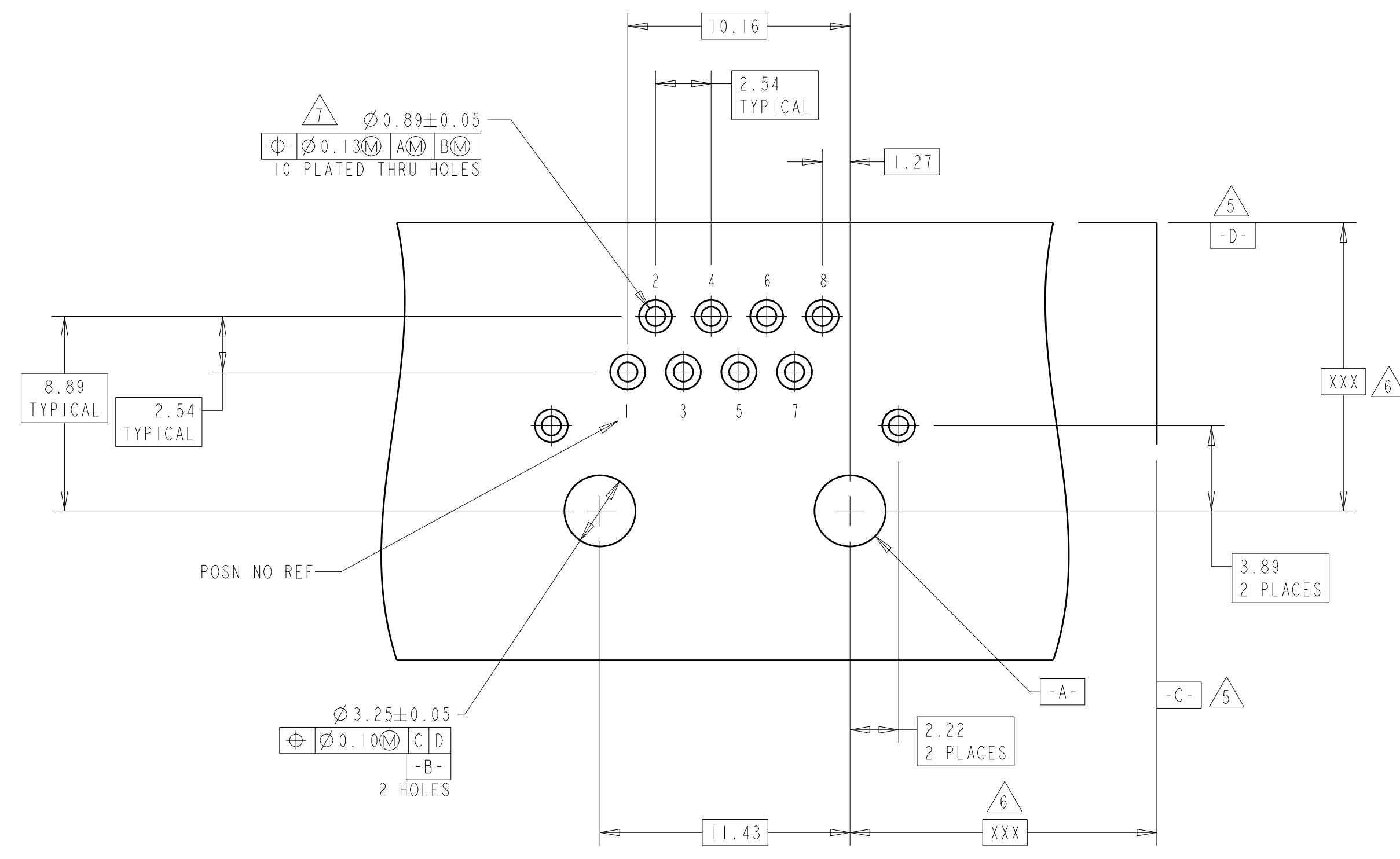


LOC	DIST	REVISIONS			
REV	DATE	DESCRIPTION	DATE	BY	APPD
AA	22				
A		REVISED PER EC 0511-0201-04	23JUN2005	LV	SF
B		REV PER ECO-11-014934	15MAR2012	JJ	AC

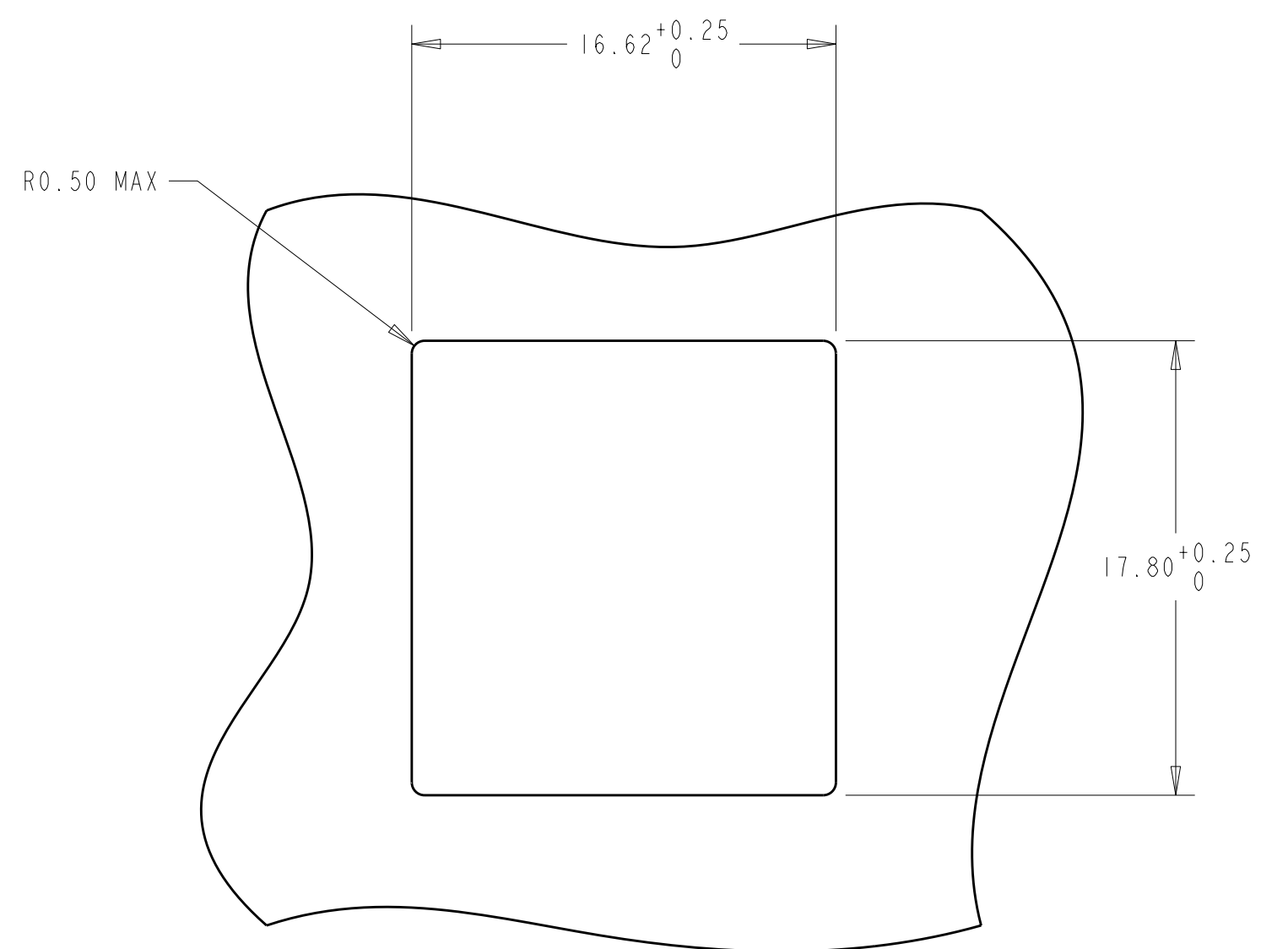


SECTION H-H

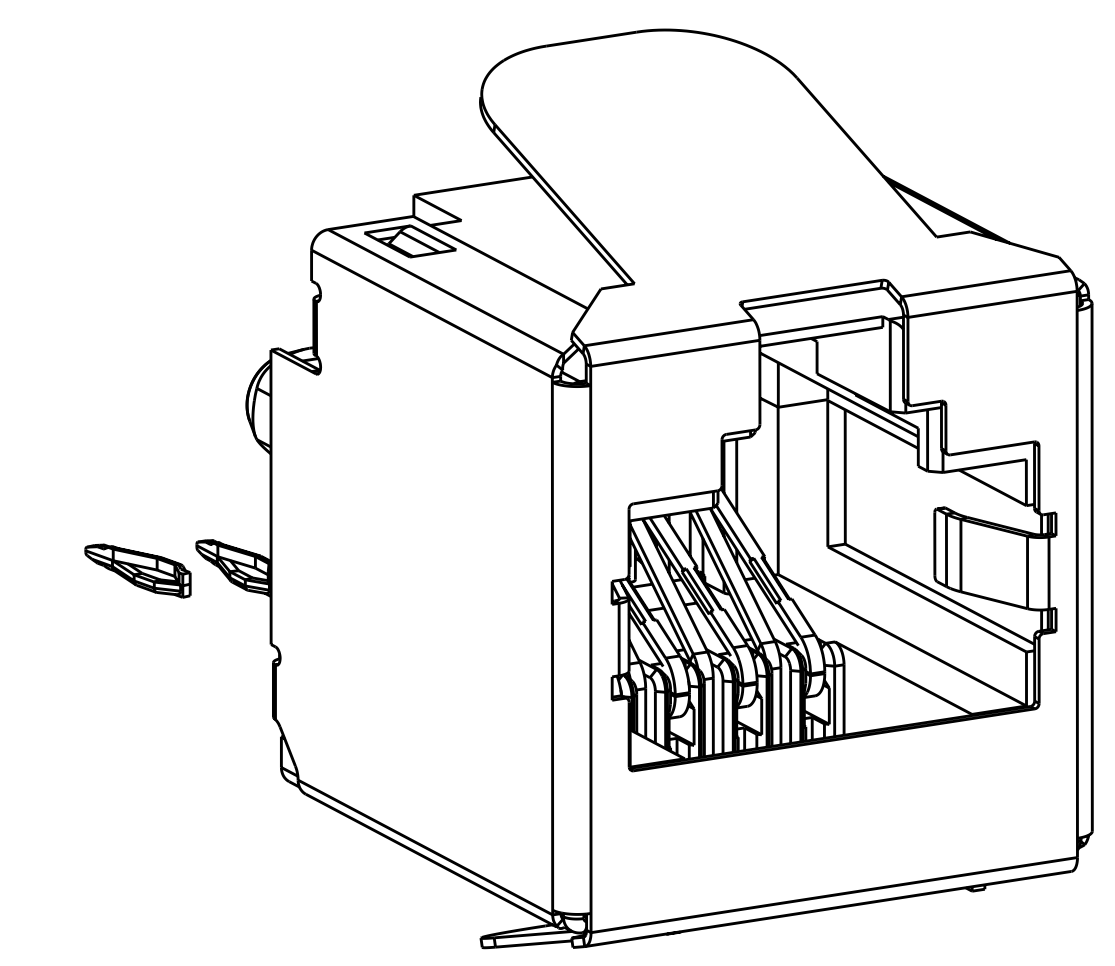
- 1 THERMOPLASTIC, COLOR-BLACK.
- 2 PHOSPHOR BRONZE
- 3 1.27µm MIN GOLD IN LOCALIZED GOLD PLATE AREA, 2µm MIN MATTE TIN ON TERMINATION END, BOTH OVER 1.27µm MIN NICKEL.
- 4 CAVITY CONFORMS TO FCC 47 CFR 68 PART F.
- 5 DATUMS ESTABLISHED BY CUSTOMER.
- 6 DIMENSIONS ESTABLISHED BY CUSTOMER.
- 7 DRILLED HOLE DIAMETER 1.02±0.03. COPPER THK 0.03-0.08. TIN THICKNESS 8µm MIN.
- 8 COPPER ZINC ALLOY.
- 9 2.03µm MIN BRIGHT TIN OVER 1.27µm MIN NICKEL.
- 10 DIMENSION AFTER HOUSING ASSEMBLY INSTALLED IN RECOMMENDED PANEL CUTOUT IS 21mm MAX.
- 11 PC BOARDS GREATER THAN 1.57mm MAY REQUIRE SPECIAL EXTRACTION TOOLING, CONSULT ENGINEERING.
- 12 WITH IMPROVED METAL PLATES WHICH DO NOT EXCEED THE BOTTOM SURFACE OF THE HOUSING.



RECOMMENDED PRINTED CIRCUIT BOARD LAYOUT  
 RECOMMENDED PRINTED CIRCUIT BOARD THICKNESS 1.4 MIN  
 COMPONENT SIDE OF PRINTED CIRCUIT BOARD



RECOMMENDED PANEL CUTOUT



6116418-1
PART NUMBER

THIS DRAWING IS A CONTROLLED DOCUMENT.		DWN: VARELA - 23JUN2005	TE Connectivity	
DIMENSIONS: mm		CHK: J. WESTMAN - 23JUN2005	NAME: HOUSING ASSEMBLY, VERTICAL, COMPLIANT PIN, SHIELDED, 8 POSITION, MODULAR JACK, CATEGORY 5	
TOLERANCES UNLESS OTHERWISE SPECIFIED:		APVD: S. FLICKINGER - 23JUN2005	PRODUCT SPEC: 108-1163-6	
9 PLC ±		APPLICATION SPEC: 114-2158	SIZE: CAGE CODE: DRAWING NO: A1 00779	
1 PLC ±0.3		WEIGHT: -	RESTRICTED TO: -	
5 PLC ±		CUSTOMER DRAWING		
4 PLC ±		SCALE: 5:1 SHEET 1 OF 1 REV B		
ANGLES ±				
MATERIAL: HOUSING: 1	FINISH: SHELL: 9			
CONTACTS: SHELL: 8	CONTACT: 3			