



Chipsmall Limited consists of a professional team with an average of over 10 year of expertise in the distribution of electronic components. Based in Hongkong, we have already established firm and mutual-benefit business relationships with customers from,Europe,America and south Asia,supplying obsolete and hard-to-find components to meet their specific needs.

With the principle of “Quality Parts,Customers Priority,Honest Operation,and Considerate Service”,our business mainly focus on the distribution of electronic components. Line cards we deal with include Microchip,ALPS,ROHM,Xilinx,Pulse,ON,Everlight and Freescale. Main products comprise IC,Modules,Potentiometer,IC Socket,Relay,Connector.Our parts cover such applications as commercial,industrial, and automotives areas.

We are looking forward to setting up business relationship with you and hope to provide you with the best service and solution. Let us make a better world for our industry!



Contact us

Tel: +86-755-8981 8866 Fax: +86-755-8427 6832

Email & Skype: info@chipsmall.com Web: www.chipsmall.com

Address: A1208, Overseas Decoration Building, #122 Zhenhua RD., Futian, Shenzhen, China



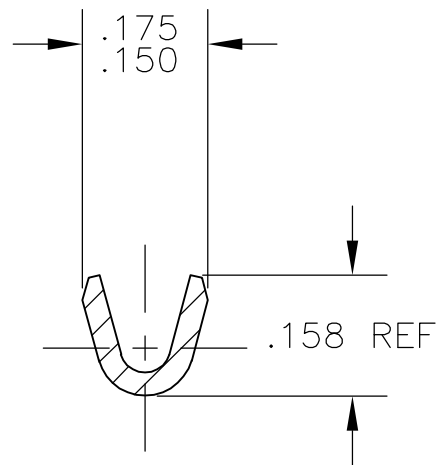
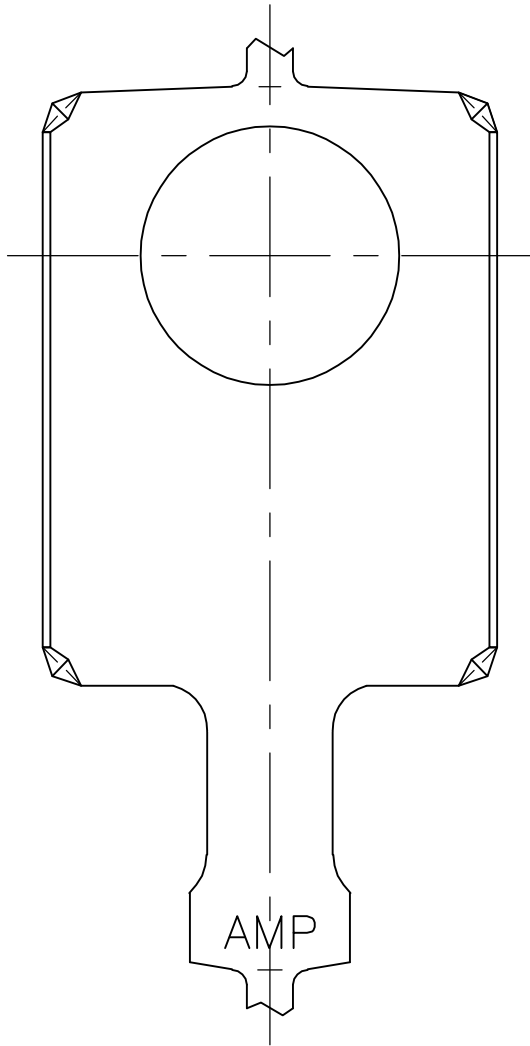
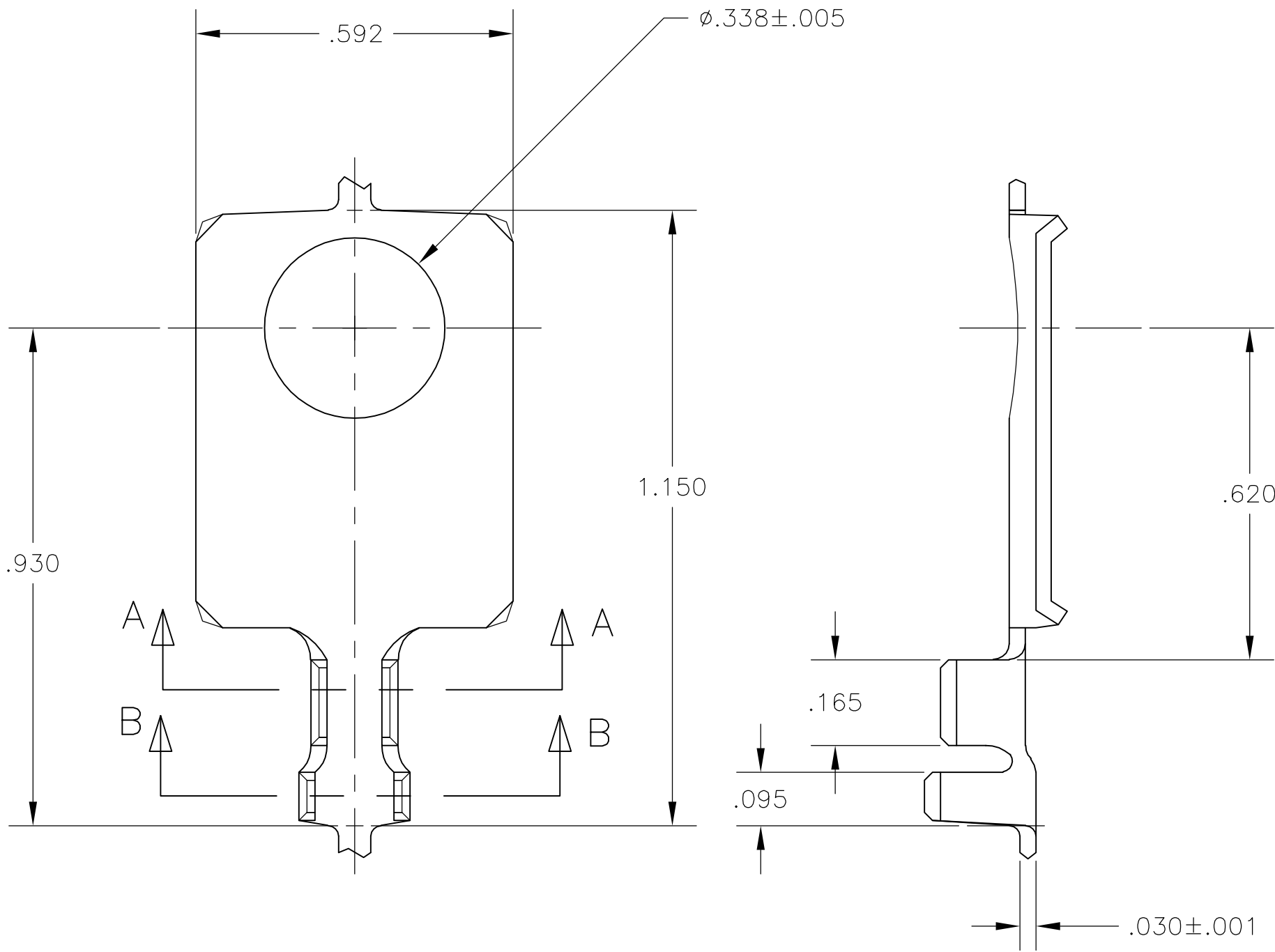
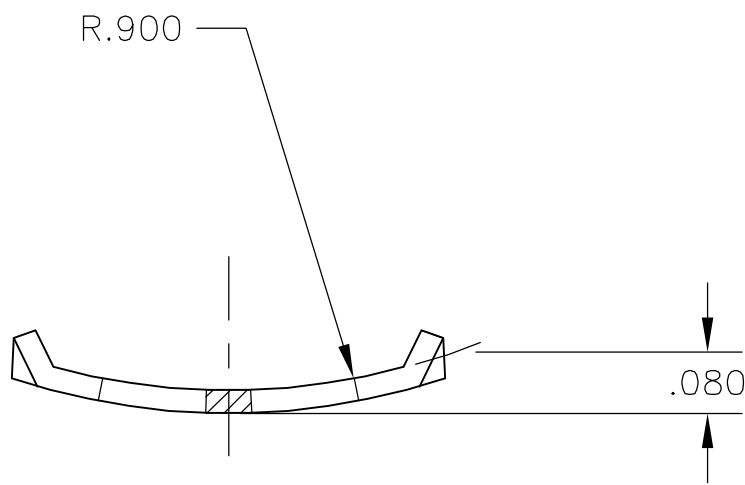
THIS DRAWING IS UNPUBLISHED.

RELEASED FOR PUBLICATION

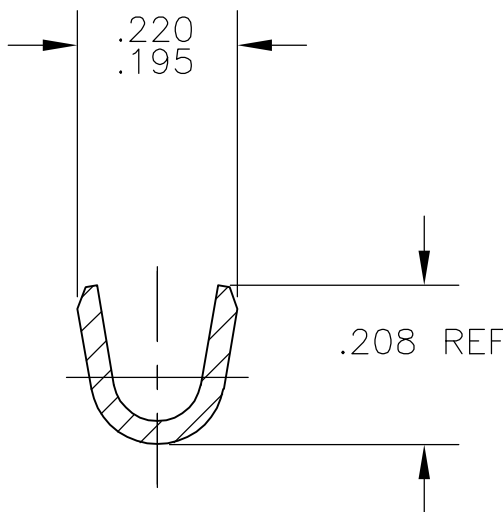
© COPYRIGHT - BY TYCO ELECTRONICS CORPORATION. ALL RIGHTS RESERVED.

LOC	DIST	REVISIONS					
		P	LTR	DESCRIPTION	DATE	DWN	APVD
AF	50		E	REVISED PER 0G3A-0959-04	10DEC04	MF	DD

- 1 CONTINUOUS STRIP ON REELS.
- 2 WIRE RANGE: #18-#14 AWG.
- 3 INSULATION RANGE: .090-.140 DIA.




SECTION A-A



SECTION B-B

61359-1

PART NUMBER

THIS DRAWING IS A CONTROLLED DOCUMENT.		DWN 01DEC2004 MICHAEL S. FEHER		tyco Electronics Tyco Electronics Corporation Harrisburg, Pa 17105-3608			
		CHK 10DEC2004 DONALD F. DECKER					
DIMENSIONS: INCHES		TOLERANCES UNLESS OTHERWISE SPECIFIED:		APVD 10DEC2004 DONALD F. DECKER		NAME	
		0 PLC ± -		PRODUCT SPEC		RING, ANTIROTATIONAL, 5/16 STUD SIZE -	
		1 PLC ± -		—			
		2 PLC ± -		APPLICATION SPEC			
		3 PLC ± -		—			
3 PLC ± .010		4 PLC ± -		—		SIZE	
ANGLES ± -		FINISH		WEIGHT -		CAGE CODE	
MATERIAL		TEMP 3 STEEL		.000080 MIN TIN		DRAWING NO	
						A2 00779 C=61359	
						RESTRICTED TO	
						—	
						SCALE 4:1	
						SHEET 1 OF 1	
						REV E	