



Chipsmall Limited consists of a professional team with an average of over 10 year of expertise in the distribution of electronic components. Based in Hongkong, we have already established firm and mutual-benefit business relationships with customers from,Europe,America and south Asia,supplying obsolete and hard-to-find components to meet their specific needs.

With the principle of "Quality Parts,Customers Priority,Honest Operation,and Considerate Service",our business mainly focus on the distribution of electronic components. Line cards we deal with include Microchip,ALPS,ROHM,Xilinx,Pulse,ON,Everlight and Freescale. Main products comprise IC,Modules,Potentiometer,IC Socket,Relay,Connector.Our parts cover such applications as commercial,industrial, and automotives areas.

We are looking forward to setting up business relationship with you and hope to provide you with the best service and solution. Let us make a better world for our industry!



Contact us

Tel: +86-755-8981 8866 Fax: +86-755-8427 6832

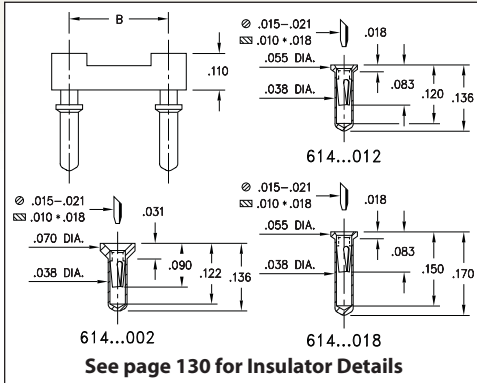
Email & Skype: info@chipsmall.com Web: www.chipsmall.com

Address: A1208, Overseas Decoration Building, #122 Zhenhua RD., Futian, Shenzhen, China

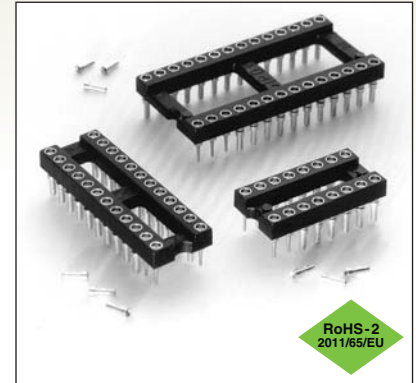


DUAL-IN-LINE SOCKETS

SERIES 614 • CARRIER TYPE, ULTRA LOW PROFILE • OPEN FRAME



- Ultra low profile receptacles sit only .018" to .031" high above the board
- Removable plastic carriers can be returned for reloading
- Hi-Rel, 3-finger BeCu #11 contact is rated at 3 amps. See page 251 for details
- Series 614 uses MM #0552-1, #0442-0, #0552-2 pins. See pages 157 and 158 for details
- Insulators are high temperature thermoplastic, suitable for all soldering operations
- For Electrical, Mechanical and Environmental Data, see page 264 for details



Total number of pins				Quantity per tube	ORDERING INFORMATION				
	A	B	C		Length = .136 (.039 Min. Mounting Hole)	Length = .136 (.039 Min. Mounting Hole)	Length = .170 (.039 Min. Mounting Hole)		
10	0.5	0.2	0.3	40	614-XX-210-31-012000	614-XX-210-31-002000	614-XX-210-31-018000		
4	0.2	0.3	0.4	102	614-XX-304-31-012000	614-XX-304-31-002000	614-XX-304-31-018000		
6	0.3	0.3	0.4	67	614-XX-306-31-012000	614-XX-306-31-002000	614-XX-306-31-018000		
8	0.4	0.3	0.4	50	614-XX-308-31-012000	614-XX-308-31-002000	614-XX-308-31-018000		
10	0.5	0.3	0.4	40	614-XX-310-31-012000	614-XX-310-31-002000	614-XX-310-31-018000		
14	0.7	0.3	0.4	28	614-XX-314-31-012000	614-XX-314-31-002000	614-XX-314-31-018000		
16	0.8	0.3	0.4	25	614-XX-316-31-012000	614-XX-316-31-002000	614-XX-316-31-018000		
18	0.9	0.3	0.4	22	614-XX-318-31-012000	614-XX-318-31-002000	614-XX-318-31-018000		
20	1.0	0.3	0.4	20	614-XX-320-31-012000	614-XX-320-31-002000	614-XX-320-31-018000		
22	1.1	0.3	0.4	18	614-XX-322-31-012000	614-XX-322-31-002000	614-XX-322-31-018000		
24	1.2	0.3	0.4	16	614-XX-324-31-012000	614-XX-324-31-002000	614-XX-324-31-018000		
28	1.4	0.3	0.4	14	614-XX-328-31-012000	614-XX-328-31-002000	614-XX-328-31-018000		
20	1.0	0.4	0.5	20	614-XX-420-31-012000	614-XX-420-31-002000	614-XX-420-31-018000		
22	1.1	0.4	0.5	18	614-XX-422-31-012000	614-XX-422-31-002000	614-XX-422-31-018000		
24	1.2	0.4	0.5	16	614-XX-424-31-012000	614-XX-424-31-002000	614-XX-424-31-018000		
28	1.4	0.4	0.5	14	614-XX-428-31-012000	614-XX-428-31-002000	614-XX-428-31-018000		
32	1.6	0.4	0.5	12	614-XX-432-31-012000	614-XX-432-31-002000	614-XX-432-31-018000		
24	1.2	0.6	0.7	16	614-XX-624-31-012000	614-XX-624-31-002000	614-XX-624-31-018000		
28	1.4	0.6	0.7	14	614-XX-628-31-012000	614-XX-628-31-002000	614-XX-628-31-018000		
32	1.6	0.6	0.7	12	614-XX-632-31-012000	614-XX-632-31-002000	614-XX-632-31-018000		
36	1.8	0.6	0.7	11	614-XX-636-31-012000	614-XX-636-31-002000	614-XX-636-31-018000		
40	2.0	0.6	0.7	10	614-XX-640-31-012000	614-XX-640-31-002000	614-XX-640-31-018000		
42	2.1	0.6	0.7	9	614-XX-642-31-012000	614-XX-642-31-002000	614-XX-642-31-018000		
48	2.4	0.6	0.7	8	614-XX-648-31-012000	614-XX-648-31-002000	614-XX-648-31-018000		
50	2.5	0.6	0.7	8	614-XX-650-31-012000	614-XX-650-31-002000	614-XX-650-31-018000		
52	2.6	0.6	0.7	7	614-XX-652-31-012000	614-XX-652-31-002000	614-XX-652-31-018000		
50	2.5	0.9	1.0	8	614-XX-950-31-012000	614-XX-950-31-002000	614-XX-950-31-018000		
52	2.6	0.9	1.0	7	614-XX-952-31-012000	614-XX-952-31-002000	614-XX-952-31-018000		
64	3.2	0.9	1.0	6	614-XX-964-31-012000	614-XX-964-31-002000	614-XX-964-31-018000		
SPECIFY PLATING CODE XX =					91	93	41 ◆	43 ◆	 XX=Plating Code See to Left
Sleeve (Pin)					200 μ" Sn/Pb	200 μ" Sn/Pb	200 μ" Sn	200 μ" Sn	
Contact (Clip)					10 μ" Au	30 μ" Au	10 μ" Au	30 μ" Au	

