



Chipsmall Limited consists of a professional team with an average of over 10 year of expertise in the distribution of electronic components. Based in Hongkong, we have already established firm and mutual-benefit business relationships with customers from,Europe,America and south Asia,supplying obsolete and hard-to-find components to meet their specific needs.

With the principle of “Quality Parts,Customers Priority,Honest Operation,and Considerate Service”,our business mainly focus on the distribution of electronic components. Line cards we deal with include Microchip,ALPS,ROHM,Xilinx,Pulse,ON,Everlight and Freescale. Main products comprise IC,Modules,Potentiometer,IC Socket,Relay,Connector.Our parts cover such applications as commercial,industrial, and automotives areas.

We are looking forward to setting up business relationship with you and hope to provide you with the best service and solution. Let us make a better world for our industry!



Contact us

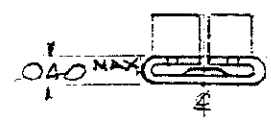
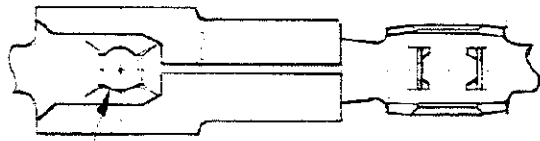
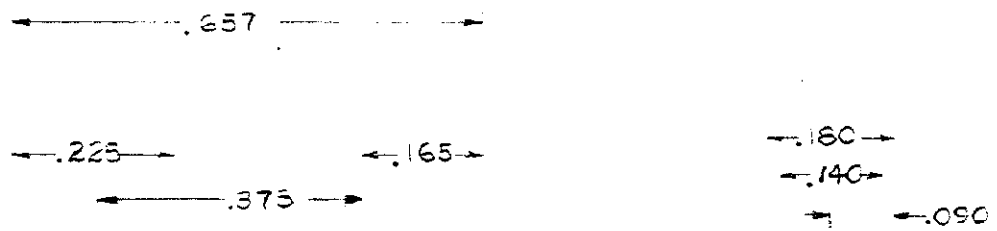
Tel: +86-755-8981 8866 Fax: +86-755-8427 6832

Email & Skype: info@chipsmall.com Web: www.chipsmall.com

Address: A1208, Overseas Decoration Building, #122 Zhenhua RD., Futian, Shenzhen, China

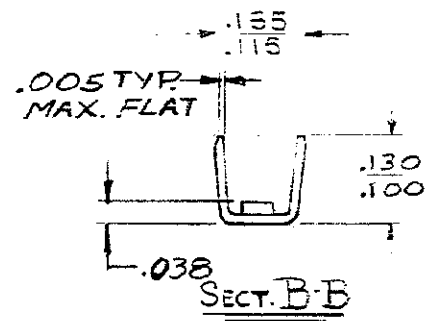
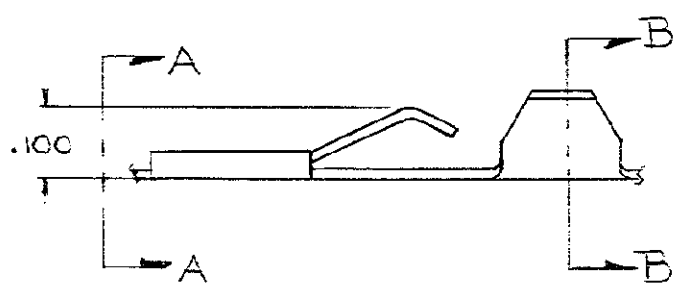


NUMBER 61462



VIEW A-A

-PRESS FIT ON .062 DIA PLASTIC STUD



CONTINUOUS STRIP ON REELS

PART No
61462-1

VWAS CP#C37E

DIMENSIONS IN INCHES. DO NOT SCALE PRINT.

THIS DRAWING IS THE PROPERTY OF AMP INCORPORATED. IT IS TO BE KEPT CONFIDENTIAL AND NOT TO BE REPRODUCED OR COPIED WITHOUT WRITTEN PERMISSION OF AMP INCORPORATED.

©1968 BY AMP INCORPORATED. ALL RIGHTS RESERVED. AMP PRODUCTS COVERED BY PATENTS AND/OR PATENTS PENDING.

CUSTOMER COPY
REFERENCE ONLY

D	REVISED	A7	D.S.	4-23 80
C	REVISED	A	10/23	10/29/69
B	RELEASED			10/28
A	REMOVED FROM END			10/28
LTR	REVISION RECORD	ECN	DR	DATE
DR	Steve Slaver 9/10/68	DE	Jim Pritulsky	9-10-68
CHK	Len Pritulsky 9/10/68	APP		

MATERIAL AND FINISH
.012 Phos. BR. - NONE
Per ASTM B103

AMP AMP INCORPORATED
HARRISBURG, PENNA.

WIRE RANGE INSULATION
.22 FLAT .085 THK.

CLASS TYPE

TOLERANCE EXCEPT AS NOTED ± .015 ± 1° 0'

SCALE 4X1
LOC NO 61462
REV D

NAME
TERMINAL-SPECIAL

PRINTED 50