



Chipsmall Limited consists of a professional team with an average of over 10 year of expertise in the distribution of electronic components. Based in Hongkong, we have already established firm and mutual-benefit business relationships with customers from,Europe,America and south Asia,supplying obsolete and hard-to-find components to meet their specific needs.

With the principle of "Quality Parts,Customers Priority,Honest Operation,and Considerate Service",our business mainly focus on the distribution of electronic components. Line cards we deal with include Microchip,ALPS,ROHM,Xilinx,Pulse,ON,Everlight and Freescale. Main products comprise IC,Modules,Potentiometer,IC Socket,Relay,Connector.Our parts cover such applications as commercial,industrial, and automotives areas.

We are looking forward to setting up business relationship with you and hope to provide you with the best service and solution. Let us make a better world for our industry!



## Contact us

Tel: +86-755-8981 8866 Fax: +86-755-8427 6832

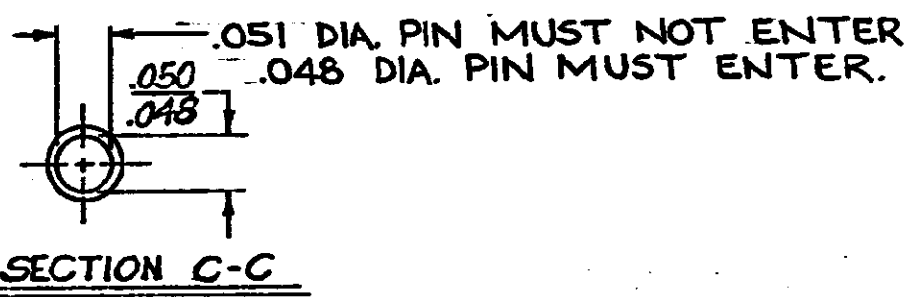
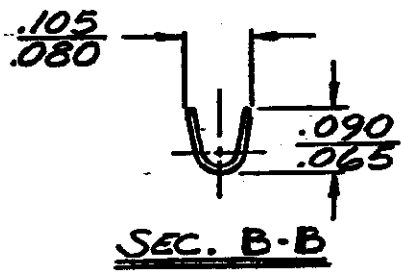
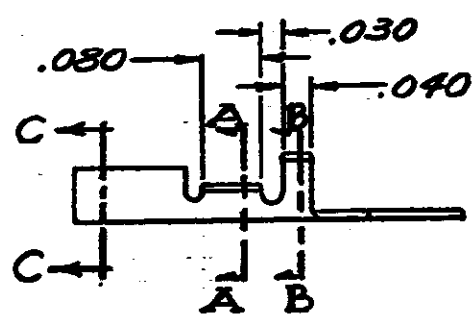
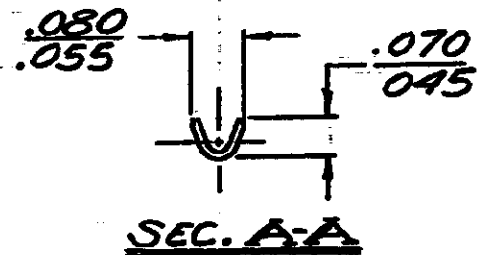
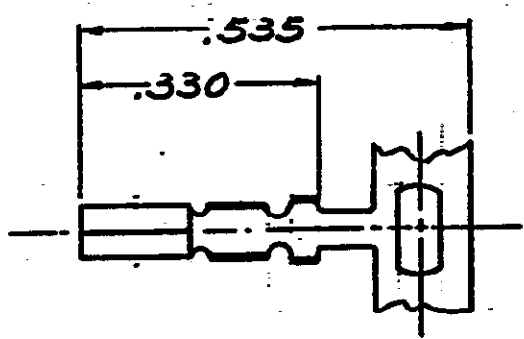
Email & Skype: info@chipsmall.com Web: www.chipsmall.com

Address: A1208, Overseas Decoration Building, #122 Zhenhua RD., Futian, Shenzhen, China



DRAWING MADE IN AMERICAN PROJECTION

NUMBER 61547



DIMENSIONS IN INCHES. DO NOT SCALE PRINT.

<del>.008 PHOS BRZ - GOLD</del>	<del>61547-4</del>
<del>.008 PHOS BRZ - PRETIN</del>	<del>61547-2</del>
<del>.008 BRASS - PRETIN</del>	<del>61547-1</del>
MAT'L & FINISH	PART. NO.

J	OBS-1 0304-93	BY	9/7/63
H	ADDED NOTE PER A-47	BY	8-22
G	OBS. -4 A-4515	BY	2-5-60
F	ADDED -4	TTI	5/6 12/7/62
E	REVISED	A-47	1/2/63
D	REVISED WIRE RANGE	A-47	1/5/62
C	CHANGED DIST.	A-47	7-20-61
B	ADDED -2	6360	3/2/60
A	REMOVED HAND STAMP RELEASED	1427	1/2/63
TR	REVISION RECORD	ECN	DATE

©1963 BY AMP INCORPORATED, ALL RIGHTS RESERVED. AMP PRODUCTS COVERED BY PATENTS AND/OR PATENTS PENDING.

CUSTOMER COPY REFERENCE ONLY

MATERIAL AND FINISH  
SEE TABLE

**AMP** AMP INCORPORATED HARRISBURG, PENNSA.

WIRE RANGE INSULATION TYPE  
#32-#20 .060 MAX

CLASS — X —  
TYPE — X —

TOLERANCE EXCEPT AS NOTED ±.015 ±1° 4-1

LOT NO 61547

DR J.R. KINKLE  
DESIGNER  
1-14-69  
APP

NAME .050 DIA PIN RECEPTACLE