



Chipsmall Limited consists of a professional team with an average of over 10 year of expertise in the distribution of electronic components. Based in Hongkong, we have already established firm and mutual-benefit business relationships with customers from,Europe,America and south Asia,supplying obsolete and hard-to-find components to meet their specific needs.

With the principle of "Quality Parts,Customers Priority,Honest Operation,and Considerate Service",our business mainly focus on the distribution of electronic components. Line cards we deal with include Microchip,ALPS,ROHM,Xilinx,Pulse,ON,Everlight and Freescale. Main products comprise IC,Modules,Potentiometer,IC Socket,Relay,Connector.Our parts cover such applications as commercial,industrial, and automotives areas.

We are looking forward to setting up business relationship with you and hope to provide you with the best service and solution. Let us make a better world for our industry!



Contact us

Tel: +86-755-8981 8866 Fax: +86-755-8427 6832

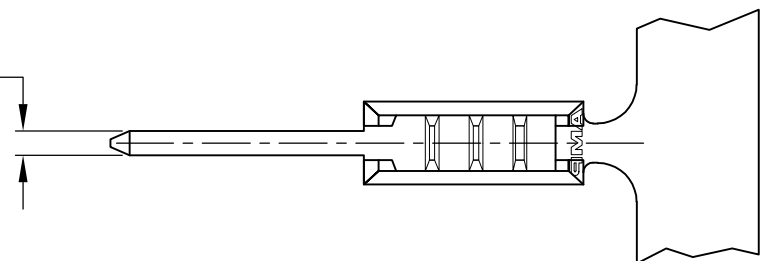
Email & Skype: info@chipsmall.com Web: www.chipsmall.com

Address: A1208, Overseas Decoration Building, #122 Zhenhua RD., Futian, Shenzhen, China

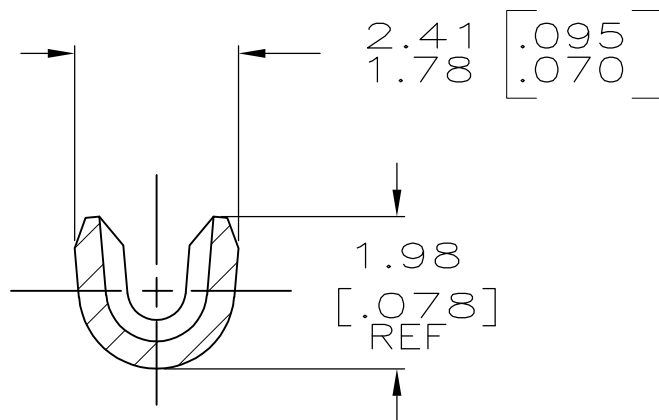
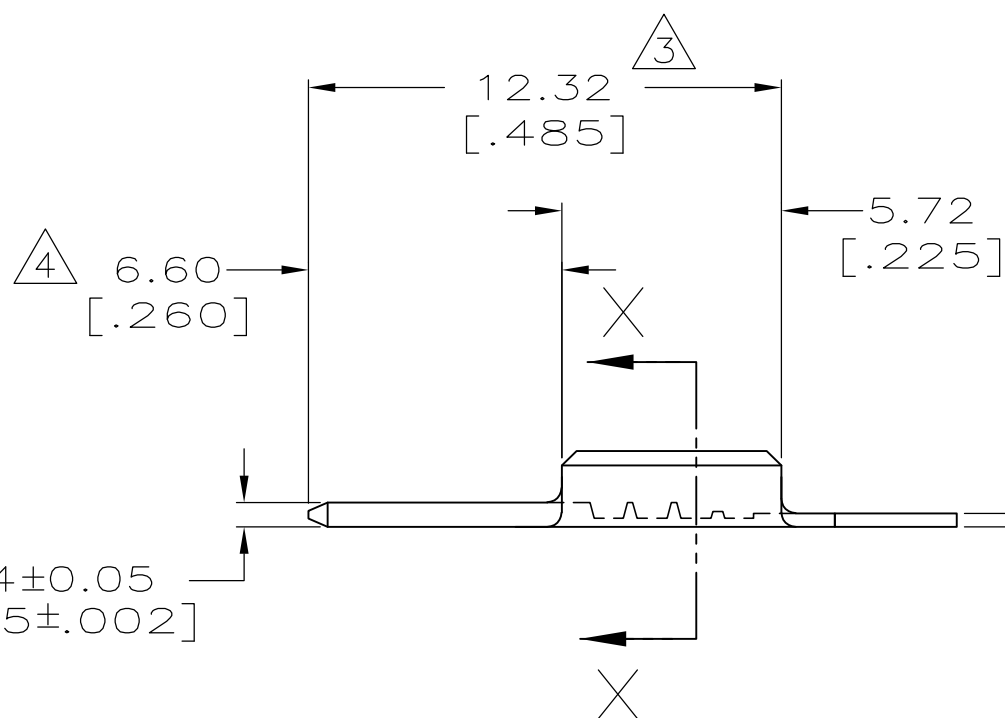


LOC	DIST	REVISIONS			
P	LTR	DESCRIPTION	DATE	DWN	APVD
AF	50	J1	REVISED PER ECR-13-008677	28MAY13	PB YHM

0.64±0.05
[.025±.002]



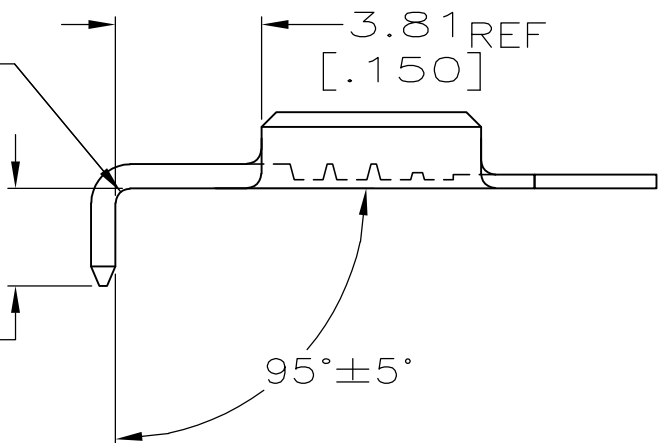
- 1 CONTINUOUS STRIP ON REELS
- 2 WIRE SIZE - TINSEL WIRE
INSULATION RANGE 0.76-0.89 [.030-.035] DIA.
- 3 GOLD PLATE OVER THIS AREA SHOWN.
- 4 GOLD FLASH THIS AREA ONLY OVER
NICKEL PLATE THE ENTIRE LENGTH.
- 5 0.002032 [.000080] MIN TIN OVER
0.00127 [.000050] MIN NICKEL.
- 6 PRELIMINARY - NOT FOR PRODUCTION



SECTION X-X
SCALE 10:1

(J1)	REVERSE REEL OF -1	5	61684-5
	REVERSE REEL OF -1	4	61684-3
OBSOLETE	REVERSE REEL OF -1	3	61684-2
OBSOLETE		3	61684-1
	REMARKS	FINISH	PART NO.

R0.38
[.015]



TO BE BENT IN APPLICATOR
FOR 61684-5 ONLY

THIS DRAWING IS A CONTROLLED DOCUMENT.		DWN	JR RUTH	18JUL00	AMP Incorporated Harrisburg, PA 17105-3608							
DIMENSIONS: MM [INCHES]		CHK	MS FEHER	18JUL00								
TOLERANCES UNLESS OTHERWISE SPECIFIED:		APVD	G PORTA	18JUL00								
0 PLC ±- 1 PLC ±- 2 PLC ±0.25 [.010] 3 PLC ±- 4 PLC ±- ANGLES ±-		PRODUCT SPEC	-									
MATERIAL	H04 BRASS	FINISH	SEE TABLE		APPLICATION SPEC	-						
		WEIGHT	-		SIZE	A3	CAGE CODE	00779	DRAWING NO	C- 61684	RESTRICTED TO	-
		CUSTOMER DRAWING			SCALE	5:1	SHEET	1	OF	1	REV	J1