



Chipsmall Limited consists of a professional team with an average of over 10 year of expertise in the distribution of electronic components. Based in Hongkong, we have already established firm and mutual-benefit business relationships with customers from,Europe,America and south Asia,supplying obsolete and hard-to-find components to meet their specific needs.

With the principle of “Quality Parts,Customers Priority,Honest Operation,and Considerate Service”,our business mainly focus on the distribution of electronic components. Line cards we deal with include Microchip,ALPS,ROHM,Xilinx,Pulse,ON,Everlight and Freescale. Main products comprise IC,Modules,Potentiometer,IC Socket,Relay,Connector.Our parts cover such applications as commercial,industrial, and automotives areas.

We are looking forward to setting up business relationship with you and hope to provide you with the best service and solution. Let us make a better world for our industry!



Contact us

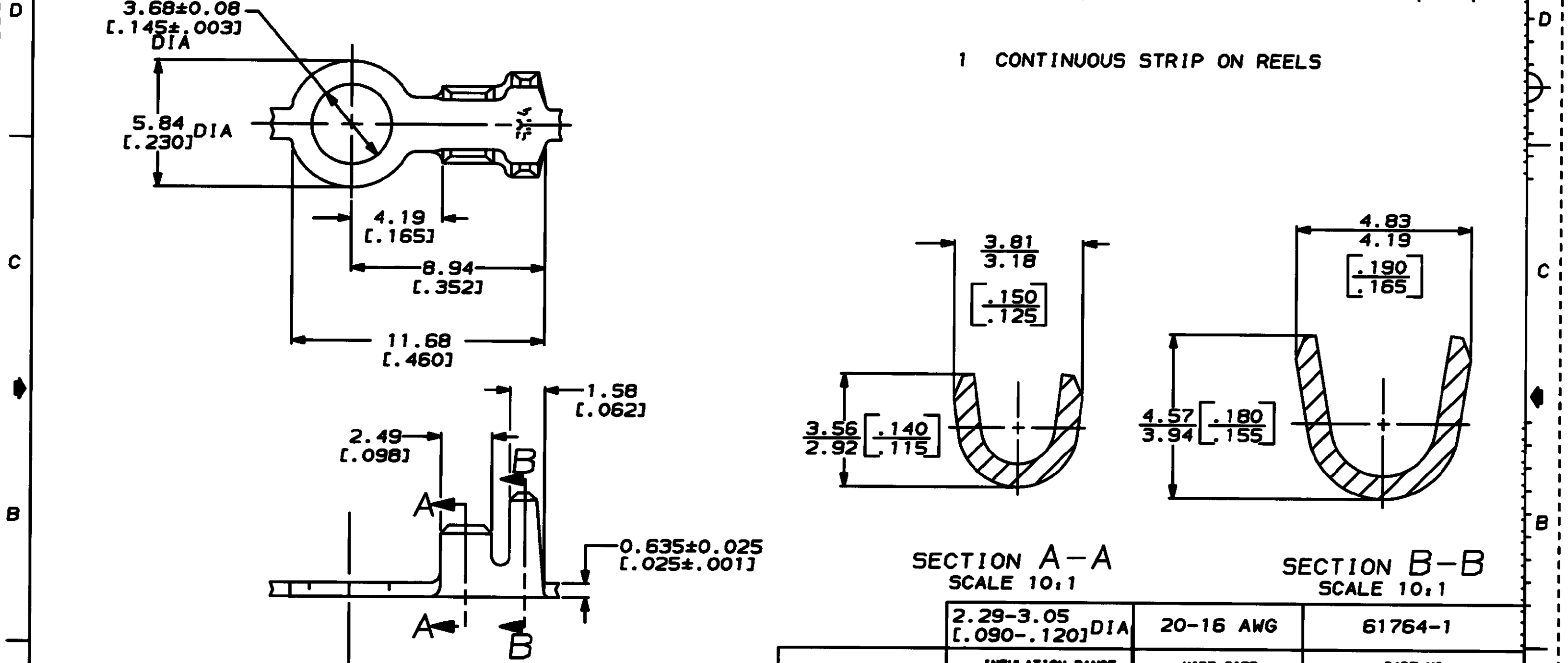
Tel: +86-755-8981 8866 Fax: +86-755-8427 6832

Email & Skype: info@chipsmall.com Web: www.chipsmall.com

Address: A1208, Overseas Decoration Building, #122 Zhenhua RD., Futian, Shenzhen, China



LOC	DIST	P	F	REVISIONS					
				ZONE	LTR	DESCRIPTION	DATE	APPO	
AF	50				B	REDRAWN PER 0054-94	2/10/94	PF/JR	



SECTION A-A
SCALE 10:1

SECTION B-B
SCALE 10:1

2.29-3.05 [$.090-.120$] DIA		20-16 AWG	61764-1
INSULATION RANGE		WIRE SIZE	PART NO
<div>DO NOT SCALE PRINT. UNLESS SPECIFIED DIMENSIONS IN IN (INCHES) TOLERANCES ON: 2 PLC DEC ± 0.25 L.O.M 3 PLC DEC ± - ANGLES ± -</div>		AMP AMP INCORPORATED Harrisburg, Pa. 17105	
		NAME	
		RING	
		SIZE	CASE CODE
082 BRASS		B	00779
FINISH		SCALE	DRAWING NO
		6:1	61764
APPLICATION SPEC		SHEET	1 OF 1
WEIGHT -			