



Chipsmall Limited consists of a professional team with an average of over 10 year of expertise in the distribution of electronic components. Based in Hongkong, we have already established firm and mutual-benefit business relationships with customers from,Europe,America and south Asia,supplying obsolete and hard-to-find components to meet their specific needs.

With the principle of “Quality Parts,Customers Priority,Honest Operation,and Considerate Service”,our business mainly focus on the distribution of electronic components. Line cards we deal with include Microchip,ALPS,ROHM,Xilinx,Pulse,ON,Everlight and Freescale. Main products comprise IC,Modules,Potentiometer,IC Socket,Relay,Connector.Our parts cover such applications as commercial,industrial, and automotives areas.

We are looking forward to setting up business relationship with you and hope to provide you with the best service and solution. Let us make a better world for our industry!



Contact us

Tel: +86-755-8981 8866 Fax: +86-755-8427 6832

Email & Skype: info@chipsmall.com Web: www.chipsmall.com


Address: A1208, Overseas Decoration Building, #122 Zhenhua RD., Futian, Shenzhen, China



Compact, Space-saving Plug-in Type Ideal for Pump Panels or Building into Equipment.

- Large switching capacity: 5 A at 220 VAC (resistive load).
- Easy to handle with DIN rail mounting.
- Replace for maintenance without rewiring the socket.



 Refer to *Safety Precautions for Floatless Level Controllers*.

61F-G□P□ (110 VAC) in this catalog have been discontinued at the end of March 2018.

Model Number Legend

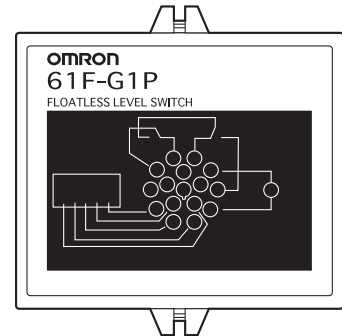
61F-□P□
1 2

1. Control Applications

- G1: Automatic water supply with idling prevention or water shortage alarm
- G2: Automatic water supply and drainage with abnormal water increase alarm
- I: Liquid level indication and alarm

2. Type

- Blank: General-purpose
- L 2KM: Long-distance (for 2 km)
- L 4KM: Long-distance (for 4 km)
- H: High-sensitivity
- D: Low-sensitivity



Ordering Information

Type	General-purpose	Long-distance (for 2 km)	Long-distance (for 4 km)
	Model	Model	Model
G1 models	61F-G1P *	61F-G1PL 2K	61F-G1PL 4KM *

Type	High-sensitivity	Low-sensitivity
	Model	Model
G1 models	61F-G1PH *	61F-G1PD *

Type	General-purpose	Long-distance (for 2 km)	Long-distance (for 4 km)
	Model	Model	Model
G2 models	61F-G2P *	61F-G2PL 2KM *	61F-G2PL 4KM *

Type	High-sensitivity	Low-sensitivity
	Model	Model
G2 models	61F-G2PH *	61F-G2PD *

Type	General-purpose	Long-distance (for 2 km)	Long-distance (for 4 km)
	Model	Model	Model
I models	61F-IP *	61F-IPL 2KM *	61F-IPL 4KM *

Type	High-sensitivity	Low-sensitivity
	Model	Model
I models	61F-IPH *	61F-IPD *

Note: When ordering, specify the desired operating voltage at the end of the model number.

Example: 61F-G1P [110VAC]

_____ Desired supply voltage

* 61F-G□P□ (110 VAC) in this catalog have been discontinued at the end of March 2018.

■ Plug-in Models

Specifications

Item	General-purpose Controller 61F-G1P 61F-G2P 61F-IP	Long-distance Controllers 61F-G1PL 61F-G2PL 61F-IPL (see note 2)	High-sensitivity Controllers 61F-G1PH 61F-G2PH 61F-IPH (see note 1, see note 6)	Low-sensitivity Controller 61F-G1PD 61F-G2PD 61F-IPD
Controlling materials and operating conditions	For control of ordinary purified water or sewage water	For control of ordinary purified water in cases where the distance between sewage pumps and water tanks or between receiver tanks and supply tanks is long or where remote control is required.	For control of liquids with high specific resistance such as distilled water	For control of liquids with low specific resistance such as salt water, sewage water, acid chemicals, alkali chemicals
Supply voltage	100, 200, 220 VAC; 50/60 Hz			
Operating voltage range	85% to 110% of rated voltage			
Interelectrode voltage	8 VAC		24 VAC	8 VAC
Interelectrode current	Approx. 1 mA AC max.		Approx. 0.4 mA AC max.	Approx. 1.2 mA AC max.
Power consumption	Approx. 6.4 VA max.			
Interelectrode operate resistance	0 to approx. 4 kΩ	0 to 1.8 kΩ (for 2 km) 0 to 0.7 kΩ (for 4 km)	Approx. 15 kΩ to approx. 70 kΩ (see note 5)	0 to approx. 1.8 kΩ
Interelectrode release resistance	Approx. 15 k to ∞ Ω	4 k to ∞ Ω (for 2 km) 2.5 k to ∞ Ω (for 4 km)	Approx. 300 k to ∞ Ω	Approx. 5 k to ∞ Ω
Response time	Operate: 80 ms max. Release: 160 ms max.			
Cable length (see note 3)	1 km max.	2 km max. 4 km max.	50 m max.	1 km max.
Control output	2 A, 200 VAC (Inductive load: $\cos\phi = 0.4$) 5 A, 200 VAC (Resistive load)			
Ambient temperature	Operating: -10 to 55°C			
Ambient humidity	Operating: 45% to 85% RH			
Insulation resistance (see note 4)	100 MΩ min. (at 500 VDC)			
Dielectric strength (see note 4)	2000 VAC, 50/60 Hz for 1 min.			
Life expectancy	Electrical: 500,000 operations min. Mechanical: 5,000,000 operations min.			
Weight	Approx. 495 g			

Note: 1. The relay in the 61F-G1H/-G2H/-IPH de-energizes when there is water present across the Electrodes, whereas the relay in the 61F-GP-N8HY energizes when there is water present across the Electrodes.

2. Models are available for 2 km and 4 km.

3. The length when using completely-insulated, 600-V, 3-conductor (0.75 mm²) cabtires becomes shorter as the cable diameter or number of conductors becomes larger. For details, refer to *Safety Precautions for Floatless Level Controllers*.

4. The insulation resistance and dielectric strength indicate values between power terminals and Electrode terminals, between power terminals and contact terminals, and between Electrode terminals and contact terminals. For details, refer to *Safety Precautions for Floatless Level Controllers*.

5. Possible to use with 15 kΩ or less, however, this may cause reset failure.

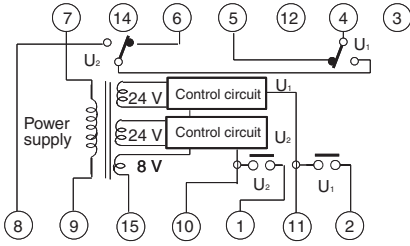
6. High-sensitivity Controllers use advanced operation.

When the power supply voltage is applied, if there are some liquids between the electrodes (ground and operation electrodes), the internal relay will not operate.

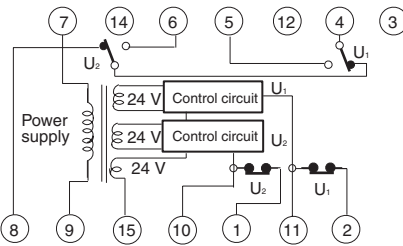
When the power supply voltage is applied, if there are no liquids between the electrodes (ground and operation electrodes), the internal relay will operate.

Internal Circuit Diagrams

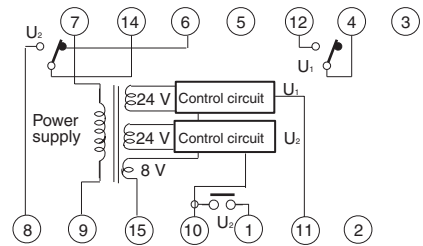
61F-G1P/-G1PL/-G1PD



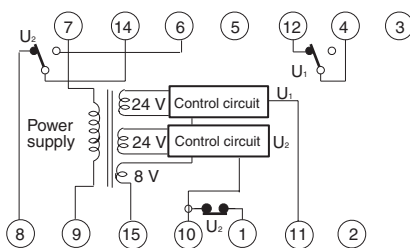
61F-G1PH



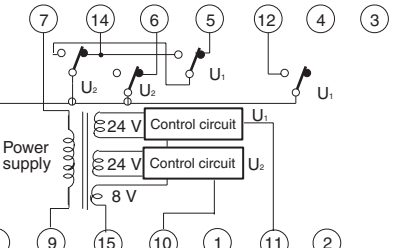
61F-G2P/-G2PL/-G2PD



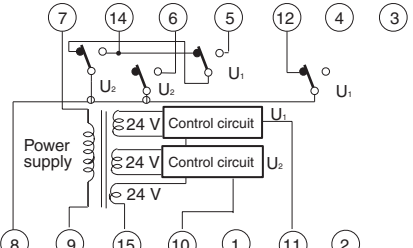
61F-G2PH



61F-IP/-IPL/-IPD



61F-IPH



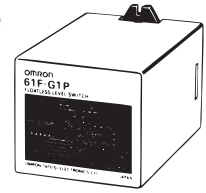
Note: The 61F-G□PH High-sensitivity Controller uses advanced operation. The internal relay will operate on the NO contact side when power is supplied and then will operate according to the liquid level.

Connections

Automatic Water Supply Control with Pump Idling Prevention and Abnormal Water Shortage Alarm

Plug-in Type
61F-G1P

Dimensions:
Page 7



<p style="text-align: center; background-color: #f0f0f0; margin: -10px -10px 10px -10px;">Automatic Water Supply Control with Pump Idling Prevention</p> <div style="background-color: #f0f0f0; padding: 2px; margin-bottom: 5px;">Connections</div> <p>Note: Be sure to ground the common Electrode E₃ (the longest Electrode).</p> <ul style="list-style-type: none"> • Insert a pushbutton switch between terminals 11 and 15 as shown by the dotted lines. • Do not press the pushbutton if the low-water alarm sounds and the pump stops during normal operation (water below E₂'). <div style="background-color: #f0f0f0; padding: 2px; margin-bottom: 5px;">Test Operation/Recovering from Power Interruptions</div> <p>If the supply water level is below E₁' when starting operation or when recovering from a power interruption, press the pushbutton to momentarily close the circuit to start the pump.</p>	<p style="text-align: center; background-color: #f0f0f0; margin: -10px -10px 10px -10px;">Automatic Water Supply Control with Abnormal Water Shortage Alarm</p> <div style="background-color: #f0f0f0; padding: 2px; margin-bottom: 5px;">Connections</div> <p>Note: Be sure to ground the common Electrode E₃ (the longest Electrode).</p> <p>Connection Sockets 14PFA (Front-connecting) PL15 (Rear-connecting)</p> <ul style="list-style-type: none"> • Insert a pushbutton switch between terminals 11 and 15 as shown by the dotted lines. • If the pump stops when the pushbutton switch is released, press it again. <div style="background-color: #f0f0f0; padding: 2px; margin-bottom: 5px;">Test Operation/Recovering from Power Interruptions</div> <p>If the supply water level is below E₄ when starting operation or when recovering from a power interruption, press the pushbutton to momentarily close the circuit to start the pump.</p>
<div style="background-color: #f0f0f0; padding: 2px; margin-bottom: 5px;">Principles of Operation</div> <ul style="list-style-type: none"> • The pump starts when the water level in the tank drops below E₂ and stops when the water level reaches E₁. • When the level of water supply source drops below E₂', the pump stops. Pumping idling is prevented and the alarm sounds. 	<div style="background-color: #f0f0f0; padding: 2px; margin-bottom: 5px;">Principles of Operation</div> <ul style="list-style-type: none"> • The pump stops when the water level reaches E₁ and starts when the water level in the tank drops below E₂. • If the water level drops below E₄ for any reason, the pump stops and the alarm sounds.

Automatic Water Supply and Drainage Control with Abnormal Water Increase Alarm

Plug-in Type
61F-G2P

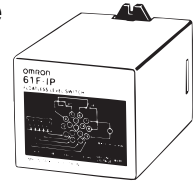


Dimensions:
Page 7

Automatic Water Supply with Abnormal Water Increase Alarm	Automatic Drainage Control with Abnormal Water Increase Alarm
<p>Connections</p> <p>Note: Be sure to ground the common Electrode E₃ (the longest Electrode).</p> <p>Connection Sockets 14PFA (Front-connecting) PL15 (Rear-connecting)</p> <ul style="list-style-type: none"> Connect terminal 14 to power supply terminal 9. (Terminal 8 is not connected.) The power supply depends on the specifications of the model. 	<p>Connections</p> <p>Note: Be sure to ground the common Electrode E₃ (the longest Electrode).</p> <p>Connection Sockets 14PFA (Front-connecting) PL15 (Rear-connecting)</p> <ul style="list-style-type: none"> Connect terminal 8 to power supply terminal 9.
<p>Principles of Operation</p> <ul style="list-style-type: none"> The pump starts when the water level drops below E₂ and stops when the water level reaches E₁. If the water level drops below E₄ for any reason, the pump stops and the alarm sounds. 	<p>Principles of Operation</p> <ul style="list-style-type: none"> The pump starts when the water level reaches E₁ and stops when the water level drops below E₂. If the water level drops below E₄ for any reason, the pump stops and the alarm sounds.

Liquid Level Indication and Alarm

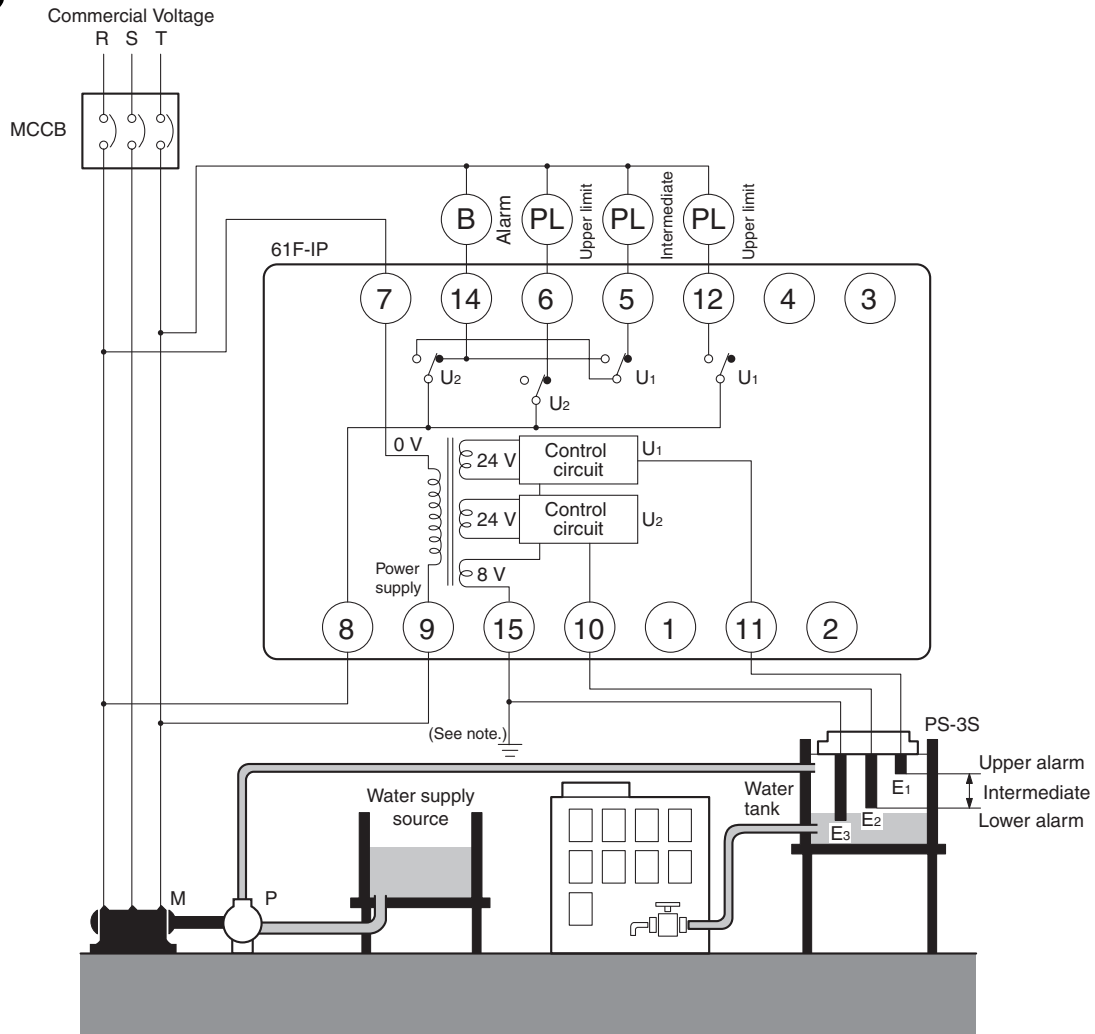
Plug-in Type
61F-IP



Dimensions:
Page 7

Liquid Level Indication and Alarm

Connections

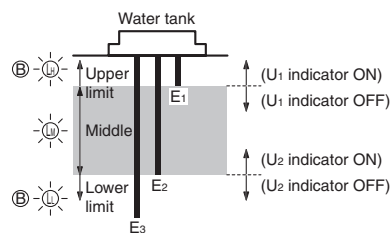


Note: Be sure to ground the common Electrode E₃ (the longest Electrode).

Connection Sockets
14PFA (Front-connecting)
PL15 (Rear-connecting)

Principles of Operation

- When the water level drops E₂, the lower-limit indicator turns ON and the alarm sounds.
- When the water level reaches E₂, the indicator turns OFF and the intermediate indicator turns ON.
- When the water level rises to E₁, the upper-limit indicator turns ON and the alarm sounds.



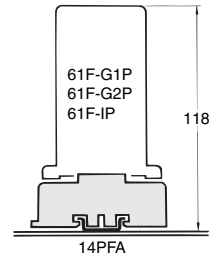
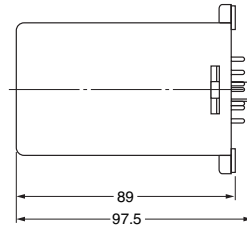
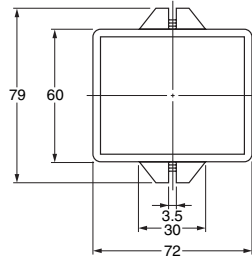
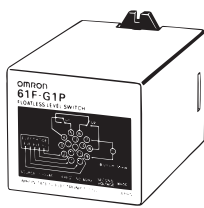
Dimensions

Note: All units are in millimeters unless otherwise indicated.

61F-G1P, -G1PL, -G1PH, -G1PD

61F-G2P, -G2PL, -G2PH, -G2PD

61F-IP, -IPL, -IPH, -IPD



■ Safety Precautions

Refer to *Safety Precautions for All Level Controllers*.

ALL DIMENSIONS SHOWN ARE IN MILLIMETERS.

To convert millimeters into inches, multiply by 0.03937. To convert grams into ounces, multiply by 0.03527.

In the interest of product improvement, specifications are subject to change without notice.

Terms and Conditions Agreement

Read and understand this catalog.

Please read and understand this catalog before purchasing the products. Please consult your OMRON representative if you have any questions or comments.

Warranties.

(a) Exclusive Warranty. Omron's exclusive warranty is that the Products will be free from defects in materials and workmanship for a period of twelve months from the date of sale by Omron (or such other period expressed in writing by Omron). Omron disclaims all other warranties, express or implied.

(b) Limitations. OMRON MAKES NO WARRANTY OR REPRESENTATION, EXPRESS OR IMPLIED, ABOUT NON-INFRINGEMENT, MERCHANTABILITY OR FITNESS FOR A PARTICULAR PURPOSE OF THE PRODUCTS. BUYER ACKNOWLEDGES THAT IT ALONE HAS DETERMINED THAT THE PRODUCTS WILL SUITABLY MEET THE REQUIREMENTS OF THEIR INTENDED USE.

Omron further disclaims all warranties and responsibility of any type for claims or expenses based on infringement by the Products or otherwise of any intellectual property right. (c) Buyer Remedy. Omron's sole obligation hereunder shall be, at Omron's election, to (i) replace (in the form originally shipped with Buyer responsible for labor charges for removal or replacement thereof) the non-complying Product, (ii) repair the non-complying Product, or (iii) repay or credit Buyer an amount equal to the purchase price of the non-complying Product; provided that in no event shall Omron be responsible for warranty, repair, indemnity or any other claims or expenses regarding the Products unless Omron's analysis confirms that the Products were properly handled, stored, installed and maintained and not subject to contamination, abuse, misuse or inappropriate modification. Return of any Products by Buyer must be approved in writing by Omron before shipment. Omron Companies shall not be liable for the suitability or unsuitability or the results from the use of Products in combination with any electrical or electronic components, circuits, system assemblies or any other materials or substances or environments. Any advice, recommendations or information given orally or in writing, are not to be construed as an amendment or addition to the above warranty.

See <http://www.omron.com/global/> or contact your Omron representative for published information.

Limitation on Liability: Etc.

OMRON COMPANIES SHALL NOT BE LIABLE FOR SPECIAL, INDIRECT, INCIDENTAL, OR CONSEQUENTIAL DAMAGES, LOSS OF PROFITS OR PRODUCTION OR COMMERCIAL LOSS IN ANY WAY CONNECTED WITH THE PRODUCTS, WHETHER SUCH CLAIM IS BASED IN CONTRACT, WARRANTY, NEGLIGENCE OR STRICT LIABILITY.

Further, in no event shall liability of Omron Companies exceed the individual price of the Product on which liability is asserted.

Suitability of Use.

Omron Companies shall not be responsible for conformity with any standards, codes or regulations which apply to the combination of the Product in the Buyer's application or use of the Product. At Buyer's request, Omron will provide applicable third party certification documents identifying ratings and limitations of use which apply to the Product. This information by itself is not sufficient for a complete determination of the suitability of the Product in combination with the end product, machine, system, or other application or use. Buyer shall be solely responsible for determining appropriateness of the particular Product with respect to Buyer's application, product or system. Buyer shall take application responsibility in all cases.

NEVER USE THE PRODUCT FOR AN APPLICATION INVOLVING SERIOUS RISK TO LIFE OR PROPERTY OR IN LARGE QUANTITIES WITHOUT ENSURING THAT THE SYSTEM AS A WHOLE HAS BEEN DESIGNED TO ADDRESS THE RISKS, AND THAT THE OMRON PRODUCT(S) IS PROPERLY RATED AND INSTALLED FOR THE INTENDED USE WITHIN THE OVERALL EQUIPMENT OR SYSTEM.

Programmable Products.

Omron Companies shall not be responsible for the user's programming of a programmable Product, or any consequence thereof.

Performance Data.

Data presented in Omron Company websites, catalogs and other materials is provided as a guide for the user in determining suitability and does not constitute a warranty. It may represent the result of Omron's test conditions, and the user must correlate it to actual application requirements. Actual performance is subject to the Omron's Warranty and Limitations of Liability.

Change in Specifications.

Product specifications and accessories may be changed at any time based on improvements and other reasons. It is our practice to change part numbers when published ratings or features are changed, or when significant construction changes are made. However, some specifications of the Product may be changed without any notice. When in doubt, special part numbers may be assigned to fix or establish key specifications for your application. Please consult with your Omron's representative at any time to confirm actual specifications of purchased Product.

Errors and Omissions.

Information presented by Omron Companies has been checked and is believed to be accurate; however, no responsibility is assumed for clerical, typographical or proofreading errors or omissions.