



Chipsmall Limited consists of a professional team with an average of over 10 year of expertise in the distribution of electronic components. Based in Hongkong, we have already established firm and mutual-benefit business relationships with customers from,Europe,America and south Asia,supplying obsolete and hard-to-find components to meet their specific needs.

With the principle of “Quality Parts,Customers Priority,Honest Operation,and Considerate Service”,our business mainly focus on the distribution of electronic components. Line cards we deal with include Microchip,ALPS,ROHM,Xilinx,Pulse,ON,Everlight and Freescale. Main products comprise IC,Modules,Potentiometer,IC Socket,Relay,Connector.Our parts cover such applications as commercial,industrial, and automotives areas.

We are looking forward to setting up business relationship with you and hope to provide you with the best service and solution. Let us make a better world for our industry!



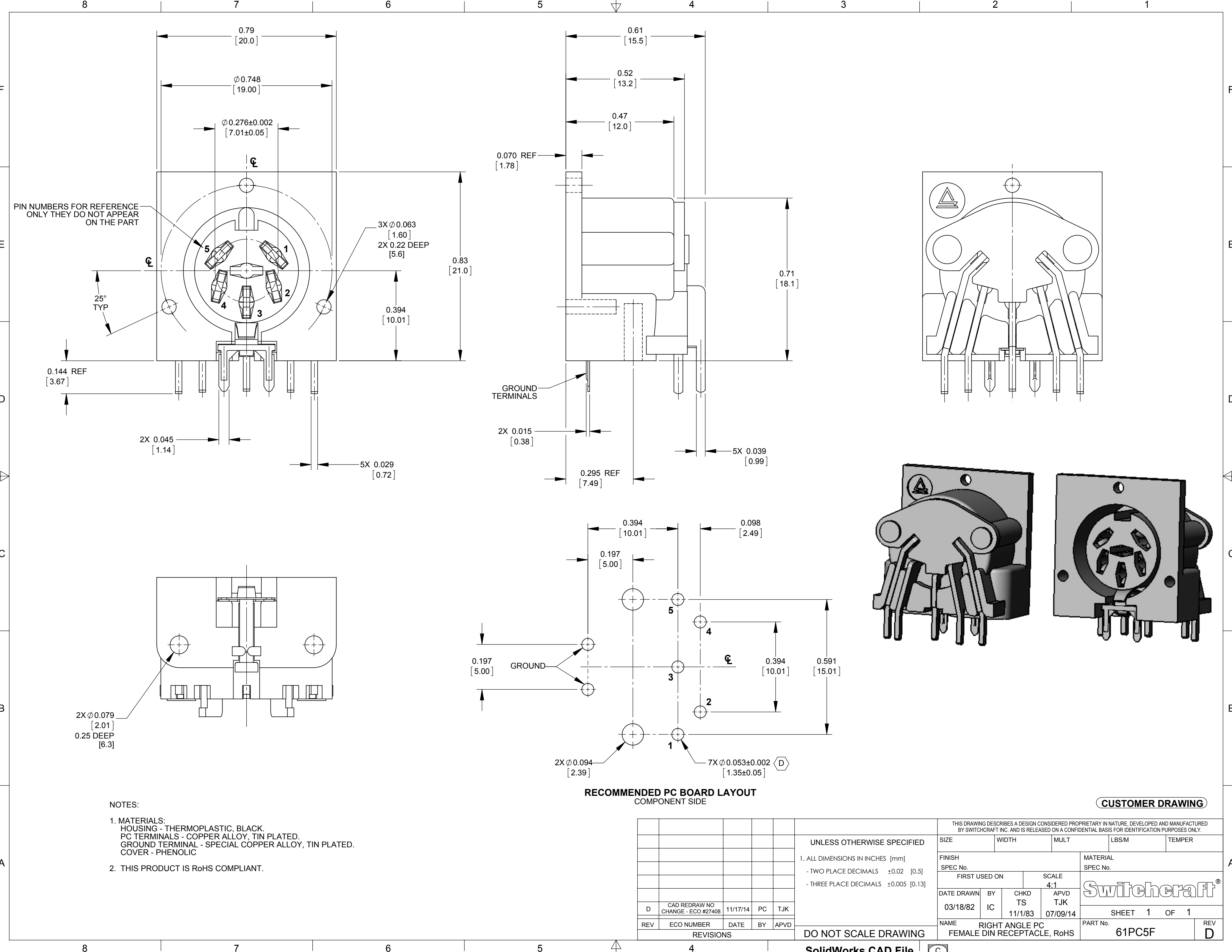
Contact us

Tel: +86-755-8981 8866 Fax: +86-755-8427 6832

Email & Skype: info@chipsmall.com Web: www.chipsmall.com

Address: A1208, Overseas Decoration Building, #122 Zhenhua RD., Futian, Shenzhen, China





PIN NUMBERS FOR REFERENCE
ONLY THEY DO NOT APPEAR
ON THE PART

GROUND
TERMINALS

2X 0.015
[0.38]

5X 0.039
[0.99]

0.295 REF
[7.49]

GROUND

RECOMMENDED PC BOARD LAYOUT
COMPONENT SIDE

NOTES:

1. MATERIALS:
HOUSING - THERMOPLASTIC, BLACK.
PC TERMINALS - COPPER ALLOY, TIN PLATED.
GROUND TERMINAL - SPECIAL COPPER ALLOY, TIN PLATED.
COVER - PHENOLIC
2. THIS PRODUCT IS RoHS COMPLIANT.

D	CAD REDRAW NO CHANGE - ECO #27408	11/17/14	PC	TJK	
REV	ECO NUMBER	DATE	BY	APVD	
REVISIONS					

UNLESS OTHERWISE SPECIFIED
1. ALL DIMENSIONS IN INCHES [mm]
- TWO PLACE DECIMALS ±0.02 [0.5]
- THREE PLACE DECIMALS ±0.005 [0.13]

DO NOT SCALE DRAWING

THIS DRAWING DESCRIBES A DESIGN CONSIDERED PROPRIETARY IN NATURE, DEVELOPED AND MANUFACTURED BY SWITCHCRAFT INC. AND IS RELEASED ON A CONFIDENTIAL BASIS FOR IDENTIFICATION PURPOSES ONLY.									
SIZE		WIDTH		MULT		LBS/M		TEMPER	
FINISH SPEC No.					MATERIAL SPEC No.				
FIRST USED ON				SCALE 4:1		Switchcraft®			
DATE DRAWN	BY	CHKD TS		APVD TJK					
03/18/82	IC	11/1/83		07/09/14		SHEET 1 OF 1			
NAME RIGHT ANGLE PC FEMALE DIN RECEPTACLE, RoHS					PART No. 61PC5F				REV D