



Chipsmall Limited consists of a professional team with an average of over 10 year of expertise in the distribution of electronic components. Based in Hongkong, we have already established firm and mutual-benefit business relationships with customers from,Europe,America and south Asia,supplying obsolete and hard-to-find components to meet their specific needs.

With the principle of "Quality Parts,Customers Priority,Honest Operation,and Considerate Service",our business mainly focus on the distribution of electronic components. Line cards we deal with include Microchip,ALPS,ROHM,Xilinx,Pulse,ON,Everlight and Freescale. Main products comprise IC,Modules,Potentiometer,IC Socket,Relay,Connector.Our parts cover such applications as commercial,industrial, and automotives areas.

We are looking forward to setting up business relationship with you and hope to provide you with the best service and solution. Let us make a better world for our industry!



## Contact us

Tel: +86-755-8981 8866 Fax: +86-755-8427 6832

Email & Skype: info@chipsmall.com Web: www.chipsmall.com

Address: A1208, Overseas Decoration Building, #122 Zhenhua RD., Futian, Shenzhen, China



4  
DRAWING MADE IN THIRD ANGLE PROJECTION

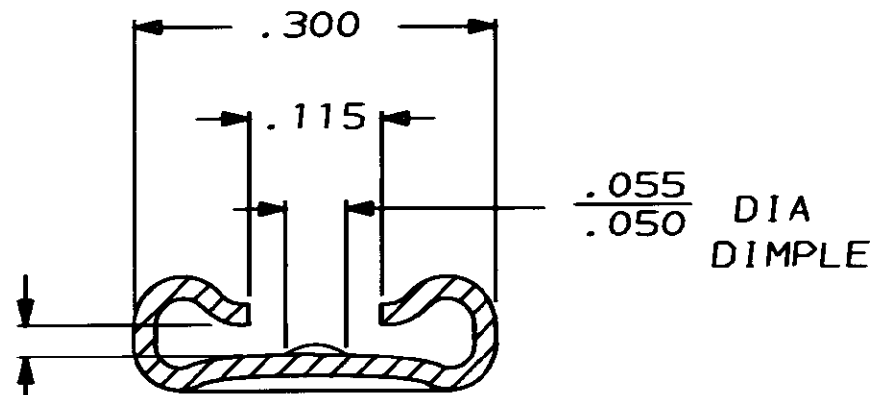
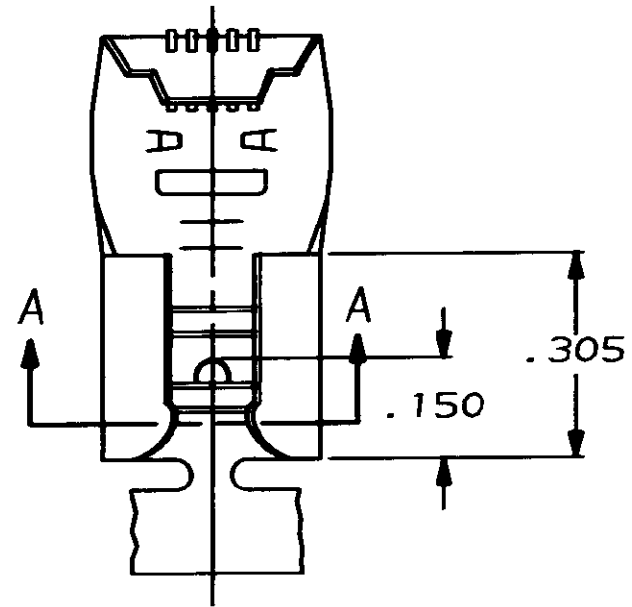
3

2

1

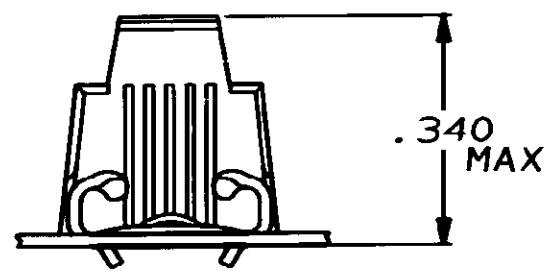
THIS DRAWING IS UNPUBLISHED. RELEASED FOR PUBLICATION ,19 .  
 © COPYRIGHT 1972 BY AMP INCORPORATED, HARRISBURG, PA. ALL INTERNATIONAL RIGHTS RESERVED. AMP PRODUCTS MAY BE COVERED BY U.S. AND FOREIGN PATENTS AND/OR PATENTS PENDING.

LOC	DIST	REVISIONS				
P	F	ZONE	LTR	DESCRIPTION	DATE	APPROVED
AF	50		E	REVISED AF-7660	10/18/91	JR



FITS .250 SERIES FASTON TAB  
SECTION A-A

1- CONTINUOUS STRIP ON REELS.



18-12 OR (2) #16	.032 ±.001	PRE-TIN	.016 4M BRASS	62091-2
18-12 OR (2) #16	.032 ±.001	---	.016 4M BRASS	62091-1
WIRE SIZE	TAB THK	FINISH	MATERIAL	PART NO

UNLESS OTHERWISE SPECIFIED DIMENSIONS ARE IN INCHES TOLERANCES ON:	DR <i>JR Ratto</i> 2-3-86
2 PL DEC ±	CHK
3 PL DEC ± .015	APPD
ANGLES ±	APPD
MATERIAL	PRODUCT SPEC
SEE TABLE	APPLICATION SPEC
FINISH	WEIGHT
SEE TABLE	

AMP INCORPORATED Harrisburg, Pa. 17105		
NAME .250 SERIES FLAG FASTON RECEPTACLE		
SIZE <b>B</b>	FSCM NO 00779	DRAWING NO 62091
SCALE NTS	SHEET 1 OF 1	