



Chipsmall Limited consists of a professional team with an average of over 10 year of expertise in the distribution of electronic components. Based in Hongkong, we have already established firm and mutual-benefit business relationships with customers from,Europe,America and south Asia,supplying obsolete and hard-to-find components to meet their specific needs.

With the principle of “Quality Parts,Customers Priority,Honest Operation,and Considerate Service”,our business mainly focus on the distribution of electronic components. Line cards we deal with include Microchip,ALPS,ROHM,Xilinx,Pulse,ON,Everlight and Freescale. Main products comprise IC,Modules,Potentiometer,IC Socket,Relay,Connector.Our parts cover such applications as commercial,industrial, and automotives areas.

We are looking forward to setting up business relationship with you and hope to provide you with the best service and solution. Let us make a better world for our industry!



Contact us

Tel: +86-755-8981 8866 Fax: +86-755-8427 6832

Email & Skype: info@chipsmall.com Web: www.chipsmall.com

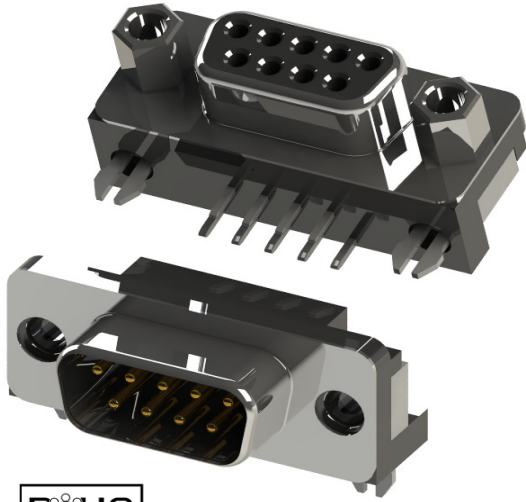
Address: A1208, Overseas Decoration Building, #122 Zhenhua RD., Futian, Shenzhen, China





SERIES 623/624: D-SUB CONNECTOR

Plug and Receptacle, Right Angle, .200"(5.08mm) Footprint



- Two Contact Rows with .200"(5.08mm) Footprint Right Angle Bend
- .109"(2.77mm) Contact Spacing X .112"(2.82mm) Row Spacing
- Plug and Receptacle in 9, 15, or 25 Contact Sizes
- Pin and Socket Contact Mating Design with P.C. Tail Termination
- Metal Shell Provides EMI/RFI Shielding, Plug Shell Indents provide Grounding and Additional Mating Retention
- Grounding Features include Two Prong Boardlock for Exceptional Retention to P.C. Board
- Mounting Options for Panel Mount or Connector Mating include Through Hole, Threaded Inserts and Threaded Standoffs
- D-Shaped Connector Mating Outline provides Polarization
- Design based on Requirements of MIL-C-24038, EIA RS-232 and RS-449

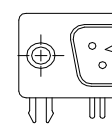


Specifications:

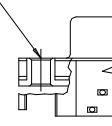
Insulator Material	Thermoplastic Polyester, UL 94V-0, Chemical Resistant, Color: Black
Contact Material	Plug (Pins): Brass Receptacle (Socket): Brass or Phosphor Bronze
Contact Plating	Selective Gold (See Ordering Code) over Nickel for the Mating Area, Tin Plating for Tail Area
Shell Material	Nickel Plated Steel
Current Rating	5A Per Contact
Contact Resistance	10 Milliohms MAX
Insulation Resistance	5000 Megohms MIN
Dielectric Voltage	1000V AC rms at Sea Level
Operating Temp.	-55°C To +105°C
Mating and Unmating Force	1oz To 10oz (0.28N To 2.78N) Per Contact Position

MOUNTING OPTIONS

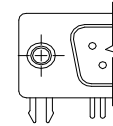
CODE 1
THROUGH HOLE



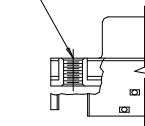
.125 (3.18) DIA.
THROUGH HOLE



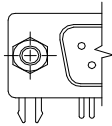
CODE 2
THREADED INSERT



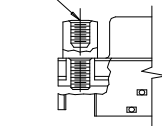
#4-40 UNC
THREAD



CODE 3
THREADED STANDOFF



#4-40 UNC x
.160 (4.06) DEEP
THREAD



Ordering Code:

623-025-261-033

SERIES:

623: PLUG (PIN)

624: RECEPTACLE (SOCKET)

NO. OF CONTACTS:

009 - 9 CONTACTS

015 - 15 CONTACTS

025 - 25 CONTACTS

CONTACT FINISH CODE:

2 - GOLD FLASH PLATING

3 - 15 MICROINCHES OF GOLD PLATING

6 - 30 MICROINCHES OF GOLD PLATING

CONTACT CODE:

61 - .200" FOOTPRINT CONTACT

MOUNTING OPTIONS:

1 - Ø.125"(Ø3.18MM) THROUGH HOLE

2 - 4-40 UNC THREADED INSERT

3 - 4-40 UNC THREADED STANDOFF

GROUNDING FEATURE:

3 - TWO PRONG BOARDLOCKS FOR Ø.120"(Ø3.05MM) HOLE

MATERIAL CODE:

0 - BRASS (623); PHOSPHOR BRONZE (624)

1 - BRASS (624 ONLY)

5 - PHOSPHOR BRONZE, HIGH TEMP INSULATOR

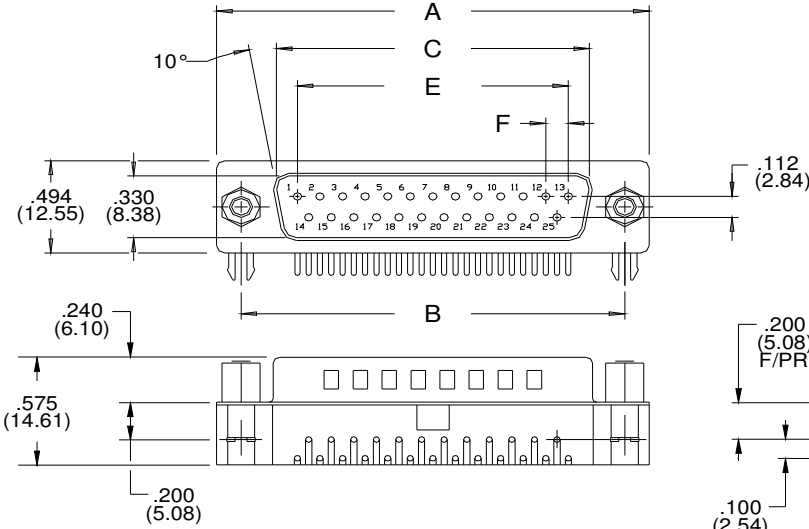
6 - BRASS, HIGH TEMP INSULATOR



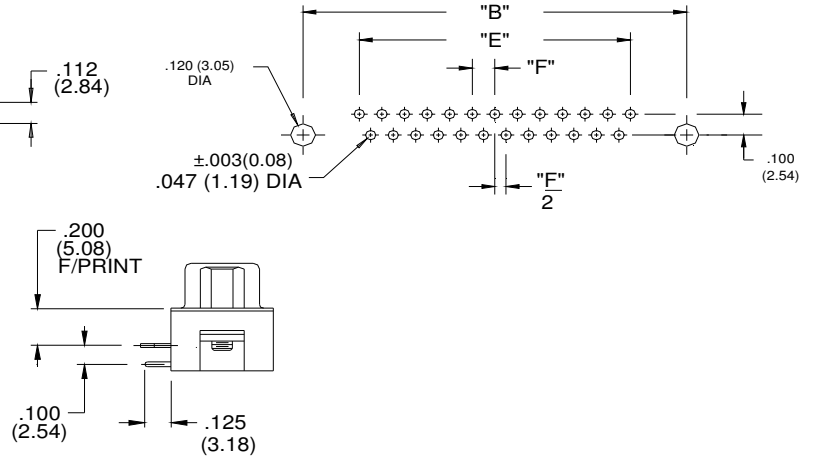
SERIES 623/624: D-SUB CONNECTOR

Plug and Receptacle, Right Angle, .200" (5.08mm) Footprint

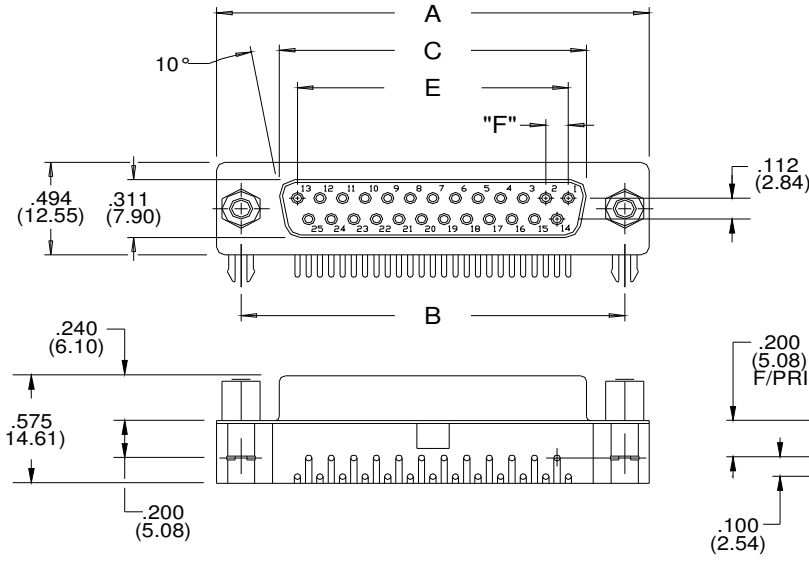
PLUG 623 SERIES



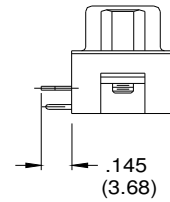
RECOMMENDED BOARD HOLE PATTERN



RECEPTACLE 624 SERIES



CODE 3 TWO PRONG BOARD LOCK



NUMBER OF CONTACTS	A		B		C PLUG		C RECEPTACLE		E		F	
	Inch	(mm)	Inch	(mm)	Inch	(mm)	Inch	(mm)	Inch	(mm)	Inch	(mm)
9	1.214	(30.84)	.984	(24.99)	.667	(16.92)	.640	(16.26)	.432	(10.97)	.108	(2.74)
15	1.545	(39.24)	1.312	(33.32)	.994	(25.25)	.967	(24.56)	.756	(19.20)	.108	(2.74)
25	2.088	(53.04)	1.852	(47.04)	1.534	(38.96)	1.508	(38.30)	1.304	(33.12)	.109	(2.76)