



Chipsmall Limited consists of a professional team with an average of over 10 year of expertise in the distribution of electronic components. Based in Hongkong, we have already established firm and mutual-benefit business relationships with customers from,Europe,America and south Asia,supplying obsolete and hard-to-find components to meet their specific needs.

With the principle of “Quality Parts,Customers Priority,Honest Operation,and Considerate Service”,our business mainly focus on the distribution of electronic components. Line cards we deal with include Microchip,ALPS,ROHM,Xilinx,Pulse,ON,Everlight and Freescale. Main products comprise IC,Modules,Potentiometer,IC Socket,Relay,Connector.Our parts cover such applications as commercial,industrial, and automotives areas.

We are looking forward to setting up business relationship with you and hope to provide you with the best service and solution. Let us make a better world for our industry!



Contact us

Tel: +86-755-8981 8866 Fax: +86-755-8427 6832

Email & Skype: info@chipsmall.com Web: www.chipsmall.com

Address: A1208, Overseas Decoration Building, #122 Zhenhua RD., Futian, Shenzhen, China



DRAWING MADE IN THIRD ANGLE PROJECTION

THIS DRAWING IS UNPUBLISHED. RELEASED FOR PUBLICATION

© COPYRIGHT 19

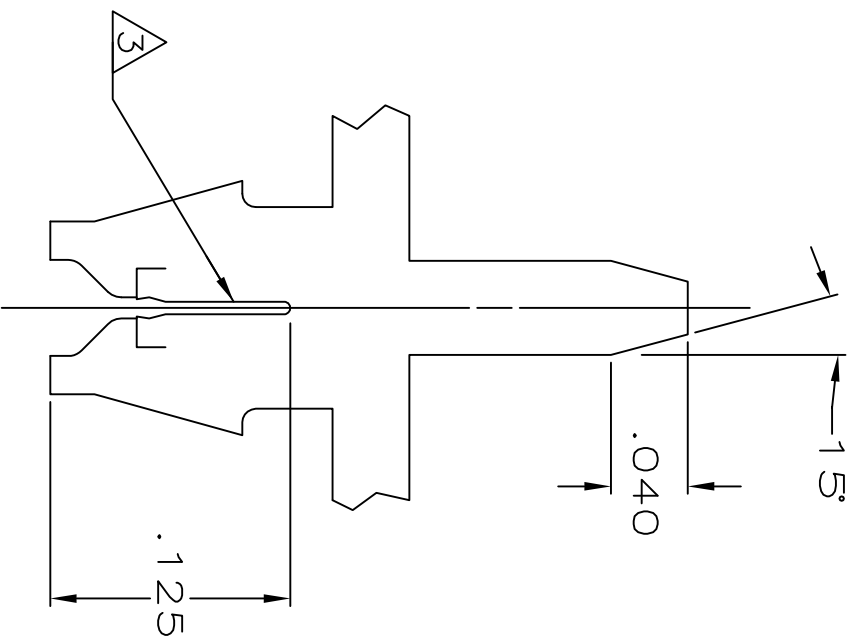
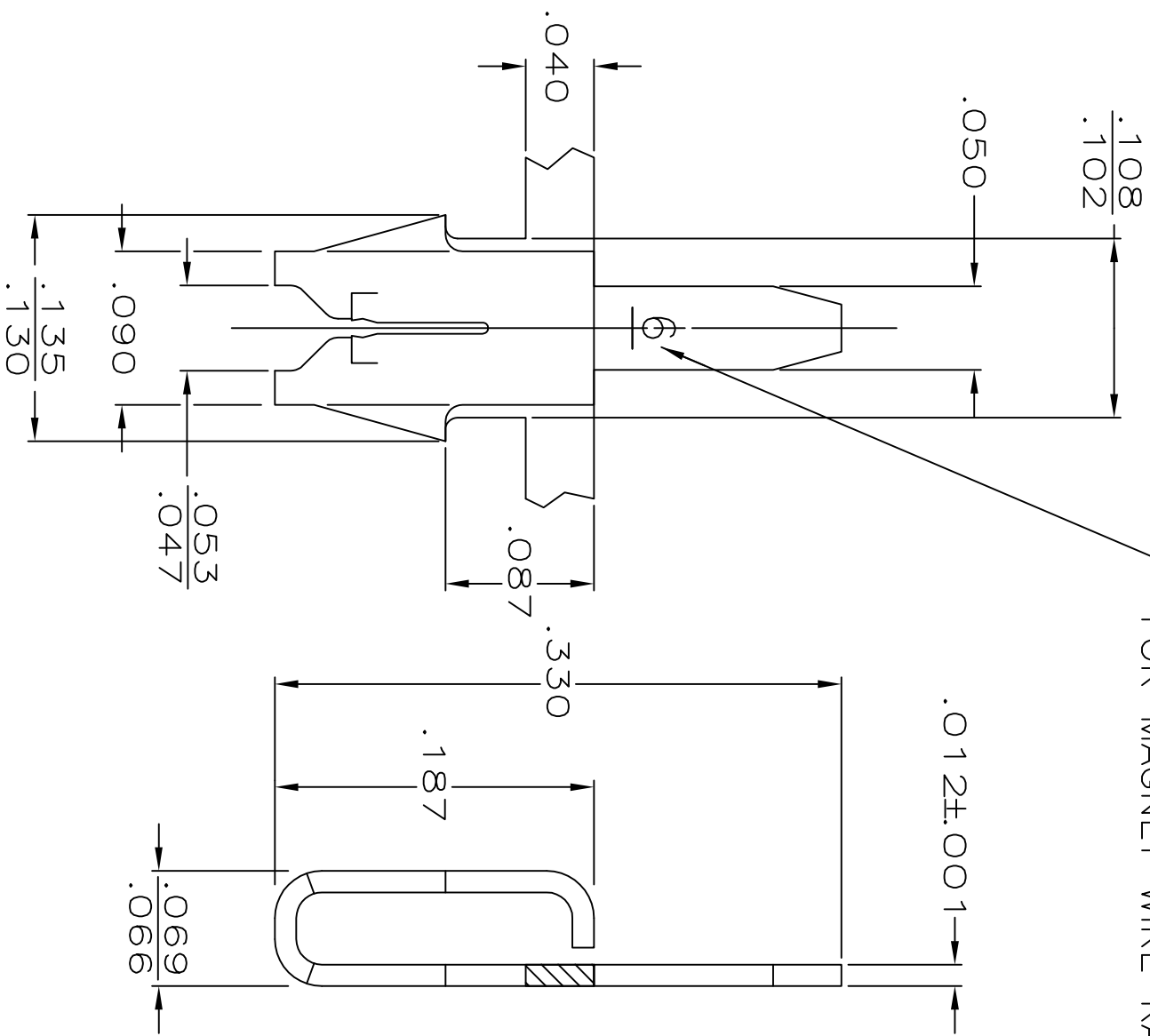
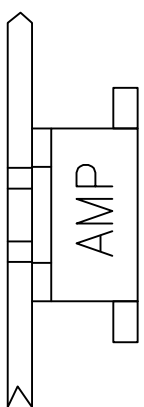
BY AMP INCORPORATED. ALL INTERNATIONAL RIGHTS RESERVED.

.19

Loc AF DIST 50

REVISIONS		DATE	APPD
REV	DESCRIPTION		
1	REV PER 0710-0138-96	2MAY96	RG/NN
2	REVISED PER ECR-12-022060	17FEB13	CX-LL

IDENTIFICATION NUMBER FOR MAGNET WIRE RANGE



- 1 MAG-MATE CAVITY SPECIFICATION.
- 2 CONTINUOUS STRIP ON REELS WITH TERMINALS LOCATED ON .200 CENTERS.
- 3 SLOT ACCEPTS #30-#28 AWG COPPER MAGNET WIRE.
- 4 REELED FOR APPLICATION THROUGH MAG-MATE INSERTION MACHINE
- 5 REELED FOR INSERTION INTO PRINTED CIRCUIT BOARD
- 6 0.002032 [.000080] MIN TIN PER MIL-T-10727 OVER 0.00127 [.000050] MIN NICKEL PER QQ-N-290

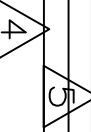
DO NOT SCALE PRINT. UNLESS SPECIFIED DIMENSIONS IN INCHES TOLERANCES ON:
 1 PLC DEC ± .010
 2 PLC DEC ± .010
 3 PLC DEC ± .010
 ANGLES

MATERIAL #4 HARD BRASS

FINISH



OBSOLETE



62430-2
62430-1

REELING

PART NO



AMP INCORPORATED
Harrisburg, Pa. 17105

TERMINAL, POSTED,
MAG-MATE™

DR	11/21/88	M.S. FEHER
CHK	11/27/88	JR RUTH
APPD	11/28/88	NELSON E. NEFF
APPD	11/28/88	C.G. ATHERTON

PRODUCT SPEC

APPLICATION SPEC

114-2069

WEIGHT

-

NAME

TERMINAL, POSTED,
MAG-MATE™

SIZE B

FSCM NO 00779

DRAWING NO 62430

SCALE 10:1

SHEET 1 OF 1