



Chipsmall Limited consists of a professional team with an average of over 10 year of expertise in the distribution of electronic components. Based in Hongkong, we have already established firm and mutual-benefit business relationships with customers from,Europe,America and south Asia,supplying obsolete and hard-to-find components to meet their specific needs.

With the principle of "Quality Parts,Customers Priority,Honest Operation,and Considerate Service",our business mainly focus on the distribution of electronic components. Line cards we deal with include Microchip,ALPS,ROHM,Xilinx,Pulse,ON,Everlight and Freescale. Main products comprise IC,Modules,Potentiometer,IC Socket,Relay,Connector.Our parts cover such applications as commercial,industrial, and automotives areas.

We are looking forward to setting up business relationship with you and hope to provide you with the best service and solution. Let us make a better world for our industry!



## Contact us

Tel: +86-755-8981 8866 Fax: +86-755-8427 6832

Email & Skype: info@chipsmall.com Web: www.chipsmall.com

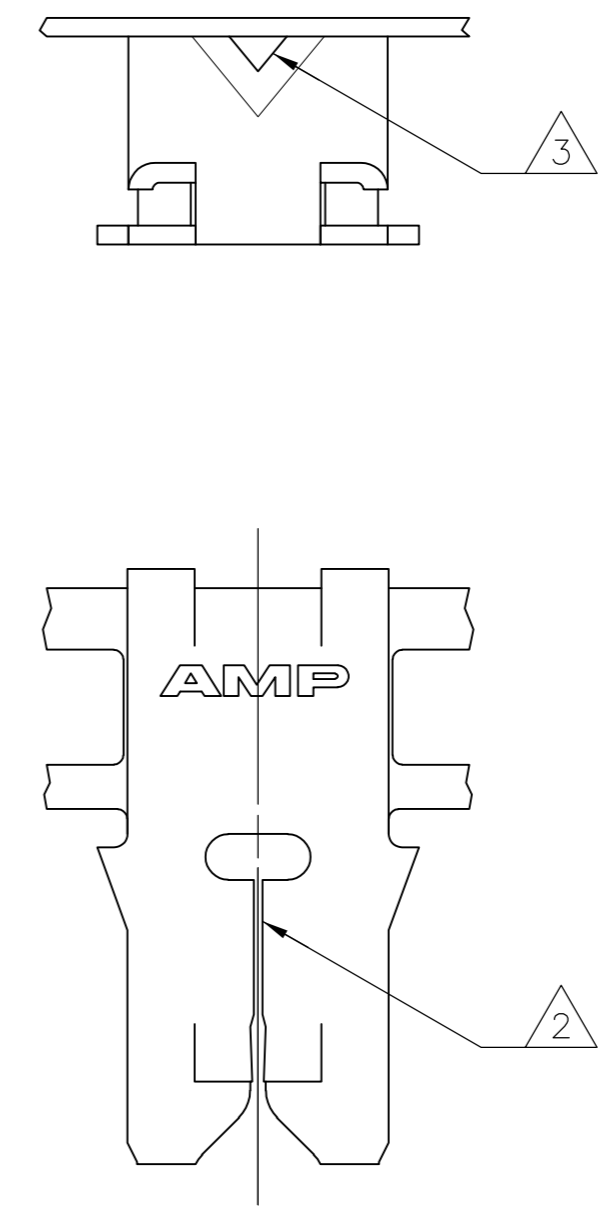
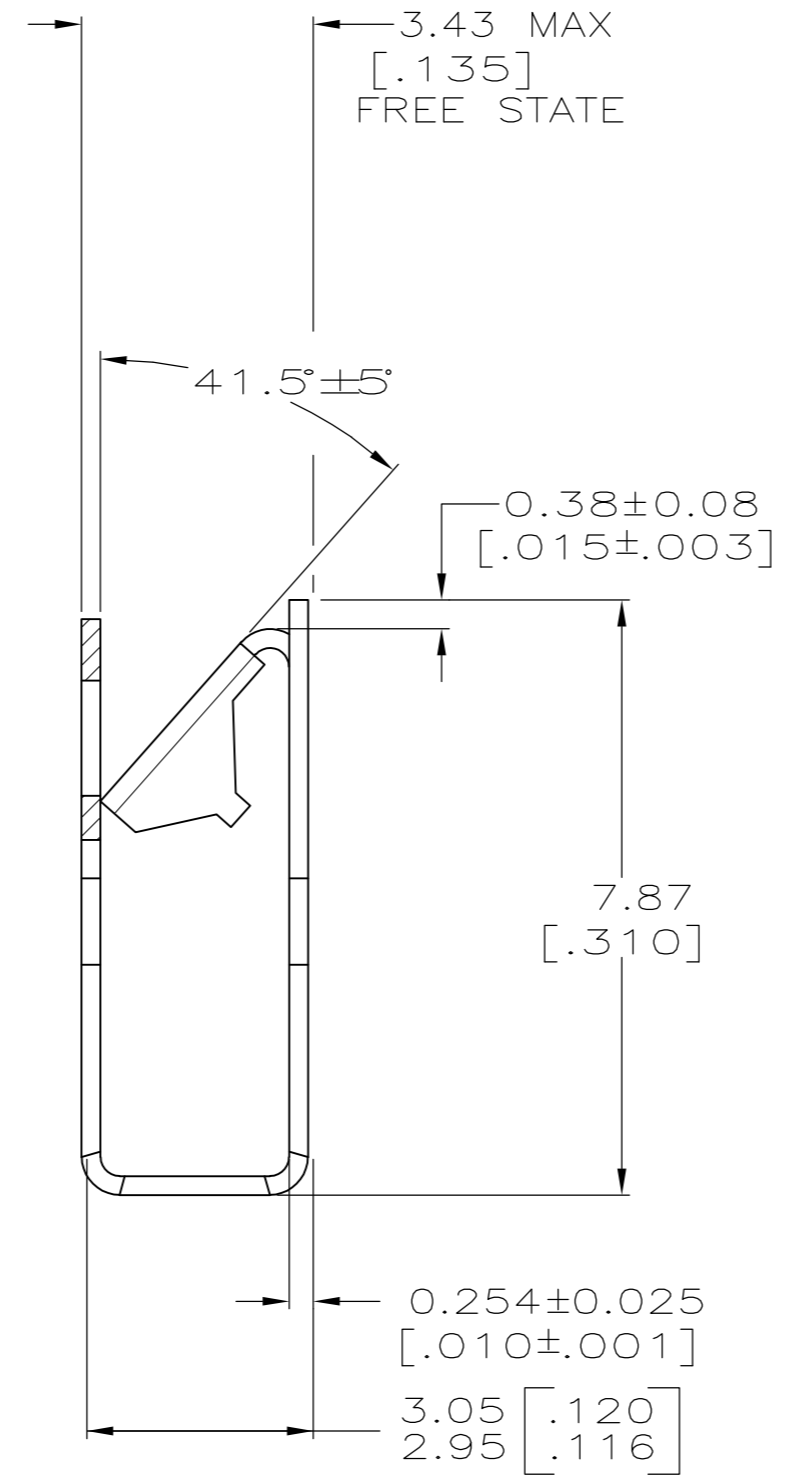
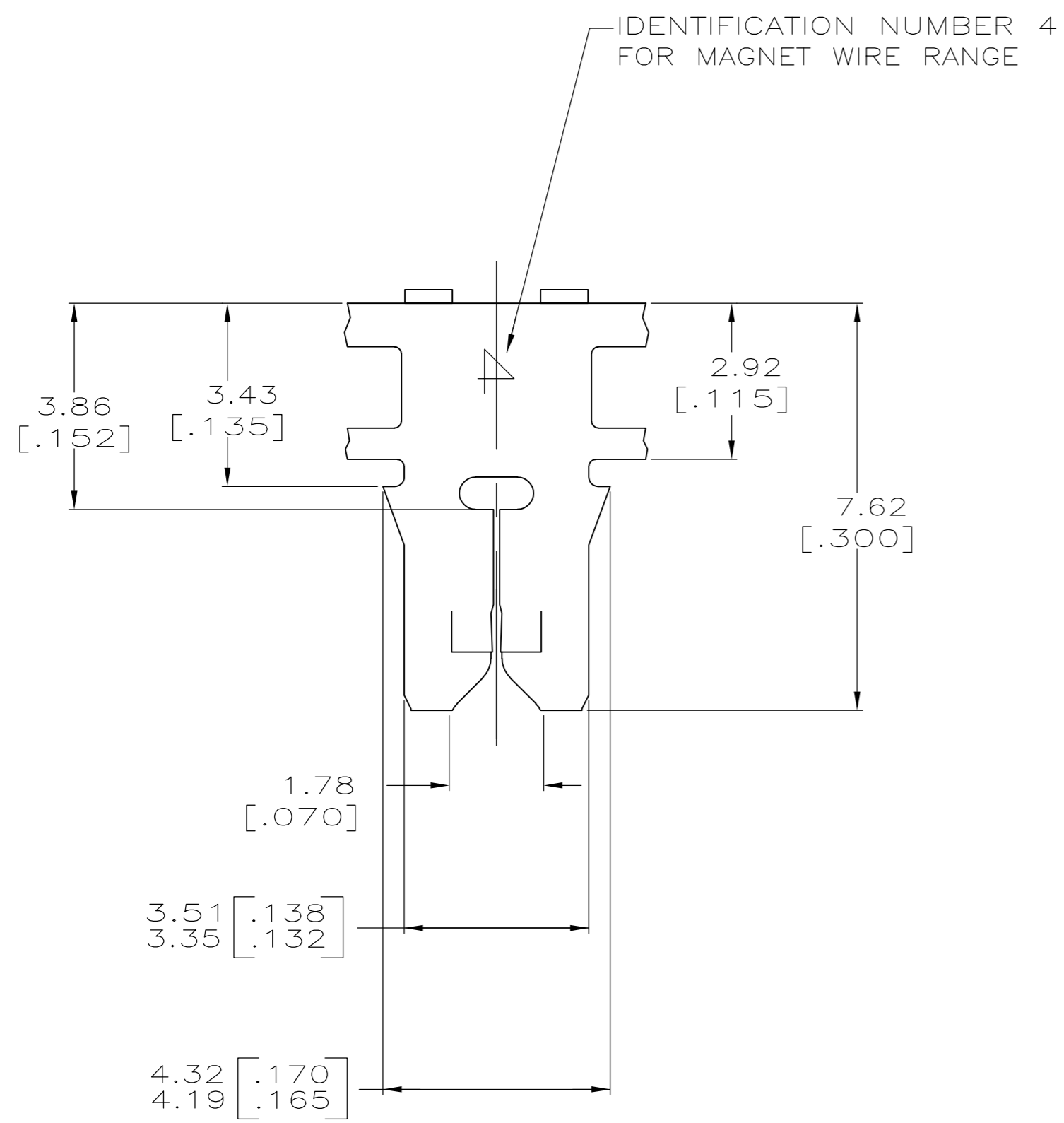
Address: A1208, Overseas Decoration Building, #122 Zhenhua RD., Futian, Shenzhen, China



THIS DRAWING IS UNPUBLISHED. RELEASED FOR PUBLICATION  
 © COPYRIGHT BY TYCO ELECTRONICS CORPORATION. ALL RIGHTS RESERVED.

LOC		DIST		REVISIONS					
AF		50		P	LTR	DESCRIPTION	DATE	DWN	APVD
				Z1		REVISED PER ECR-07-010057	07MAY07	HMR	KR

- 1 CONTINUOUS STRIP ON REELS WITH TERMINALS LOCATED ON 5.59±0.08 [.220±.003] CENTERS.
- 2 SLOT ACCEPTS 0.18-0.23mm [#33-#31] AWG COPPER MAGNET WIRE. 2 WIRES OF THE SAME SIZE PER SLOT.
- 3 POKE-IN ACCEPTS A 0.50-0.90mm<sup>2</sup> [#20-#18] AWG SOLID OR FUSED STRANDED LEAD WIRE.
- 4 SPECIAL REEL QUANTITY - AMP SPAIN PRODUCTION ONLY.
- 5 PRELIMINARY - NOT FOR PRODUCTION.



PAPER SPLICE	WITH PAPER	0.002032 [.000080] MIN TIN PLATE	4M BRASS	5	62431-6
WELD SPLICE	WITH PAPER	0.002032 [.000080] MIN TIN PLATE	4M BRASS	4	62431-5
		-	-	-	-
WELD SPLICE	PLASTIC REEL W/ PAPER	UNPLATED	4M BRASS		62431-2
WELD SPLICE	WITH PAPER	0.002032 [.000080] MIN TIN PLATE	4M BRASS		62431-1
SPLICE	REELING	FINISH	MATERIAL		PART NO

THIS DRAWING IS A CONTROLLED DOCUMENT.

DIMENSIONS: INCHES

TOLERANCES UNLESS OTHERWISE SPECIFIED:

0 PLC	± -
1 PLC	± -
2 PLC	± 0.25 [.010]
3 PLC	± -
4 PLC	± -
ANGLES	± -

MATERIAL: SEE TABLE

FINISH: SEE TABLE

APPROVALS:

DWN	23/JUN/94	R.R. BUCHHEISTER JR.
CHK	24/JUN/94	MICHAEL S. FEHER
APVD	27/JUN/94	NELSON E. NEFF

tyco Electronics Tyco Electronics Corporation Harrisburg, Pa 17105-3608

NAME: TERMINAL, POKE-IN, 300 SERIES MAG-MATE™

PRODUCT SPEC: 108-2012

APPLICATION SPEC: 114-2046

WEIGHT: -

SIZE: A2 CAGE CODE: 00779 DRAWING NO: 62431 RESTRICTED TO: -

CUSTOMER DRAWING SCALE: 10:1 SHEET: 1 OF 1 REV: Z1