



Chipsmall Limited consists of a professional team with an average of over 10 year of expertise in the distribution of electronic components. Based in Hongkong, we have already established firm and mutual-benefit business relationships with customers from,Europe,America and south Asia,supplying obsolete and hard-to-find components to meet their specific needs.

With the principle of "Quality Parts,Customers Priority,Honest Operation,and Considerate Service",our business mainly focus on the distribution of electronic components. Line cards we deal with include Microchip,ALPS,ROHM,Xilinx,Pulse,ON,Everlight and Freescale. Main products comprise IC,Modules,Potentiometer,IC Socket,Relay,Connector.Our parts cover such applications as commercial,industrial, and automotives areas.

We are looking forward to setting up business relationship with you and hope to provide you with the best service and solution. Let us make a better world for our industry!



Contact us

Tel: +86-755-8981 8866 Fax: +86-755-8427 6832

Email & Skype: info@chipsmall.com Web: www.chipsmall.com

Address: A1208, Overseas Decoration Building, #122 Zhenhua RD., Futian, Shenzhen, China



DRAWING MADE IN THIRD ANGLE PROJECTION

THIS DRAWING IS UNPUBLISHED.

RELEASED FOR PUBLICATION

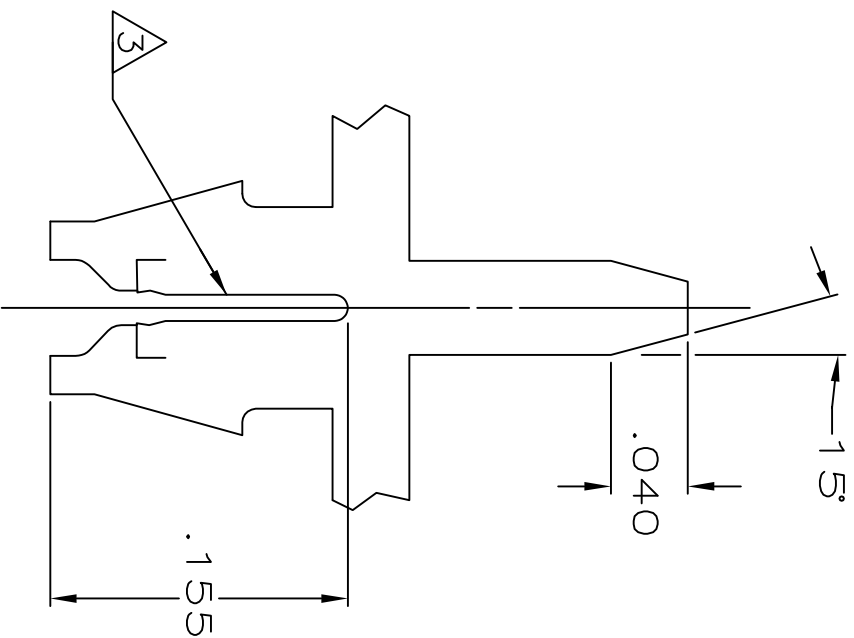
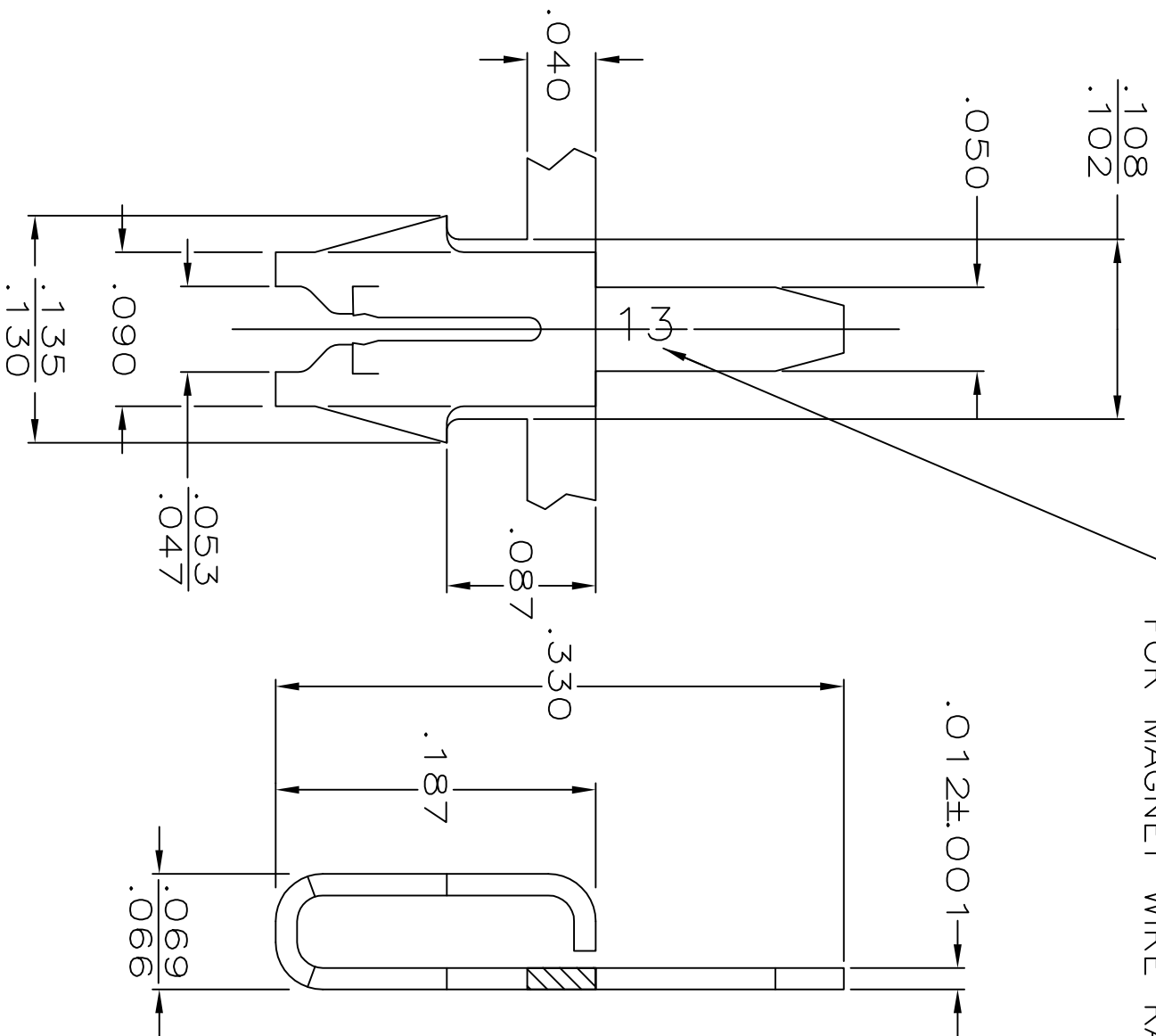
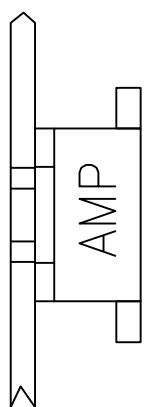
.19

© COPYRIGHT 19

BY AMP INCORPORATED. ALL INTERNATIONAL RIGHTS RESERVED.

Loc	DIST	P	F	ZONE	LTR	REVISIONS	DESCRIPTION	DATE	APPD
AF	50				L	REV NOTE 5 REACT -2 PER 0G1A-0079-99		22MAR99	MF/PD
					L1	REVISED PER ECR-12-022060		17FEB13	CX-LL

IDENTIFICATION NUMBER FOR MAGNET WIRE RANGE



- 1 MAG-MATE CAVITY SPECIFICATION.
- 2 CONTINUOUS STRIP ON REELS WITH TERMINALS LOCATED ON .200 CENTERS.
- 3 SLOT ACCEPTS #24-#22 AWG COPPER MAGNET WIRE.
- 4 .000080 MIN TIN PLATE.
- 5 .000080 MIN TIN PLATE OVER .000050 MIN NICKEL UNDERPLATE.
- 6 REELED FOR APPLICATION THROUGH MAG-MATE INSERTION MACHINE
- 7 REELED FOR INSERTION INTO PRINTED CIRCUIT BOARD

7	6	4	62439-3
6	5	4	62439-2
			62439-1

DO NOT SCALE PRINT. UNLESS SPECIFIED DIMENSIONS IN INCHES TOLERANCES ON:		DR	11/21/88	M.S. FEHER	NAME	AMP AMP INCORPORATED Harrisburg, Pa. 17105	
1	PLC DEC ± .010	CHK	11/27/88	JR RUTH	SIZE	FSCM NO	DRAWING NO
2	PLC DEC ± .010	APPD	11/28/88	NELSON E. NEFF	B	00779	62439
3	PLC DEC ± .010	PRODUCT SPEC	C.G. ATHERTON		SCALE	10:1	SHEET 1 OF 1

MATERIAL #4 HARD BRASS

FINISH SEE TABLE