



Chipsmall Limited consists of a professional team with an average of over 10 year of expertise in the distribution of electronic components. Based in Hongkong, we have already established firm and mutual-benefit business relationships with customers from,Europe,America and south Asia,supplying obsolete and hard-to-find components to meet their specific needs.

With the principle of “Quality Parts,Customers Priority,Honest Operation,and Considerate Service”,our business mainly focus on the distribution of electronic components. Line cards we deal with include Microchip,ALPS,ROHM,Xilinx,Pulse,ON,Everlight and Freescale. Main products comprise IC,Modules,Potentiometer,IC Socket,Relay,Connector.Our parts cover such applications as commercial,industrial, and automotives areas.

We are looking forward to setting up business relationship with you and hope to provide you with the best service and solution. Let us make a better world for our industry!



Contact us

Tel: +86-755-8981 8866 Fax: +86-755-8427 6832

Email & Skype: info@chipsmall.com Web: www.chipsmall.com

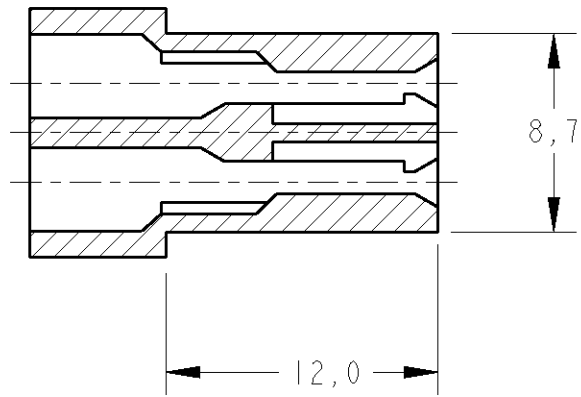
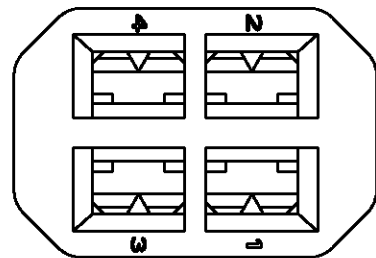
Address: A1208, Overseas Decoration Building, #122 Zhenhua RD., Futian, Shenzhen, China



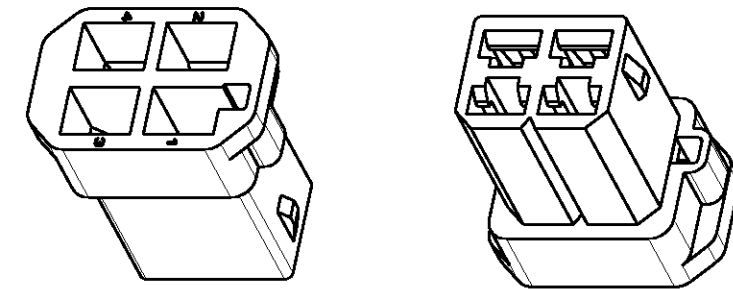
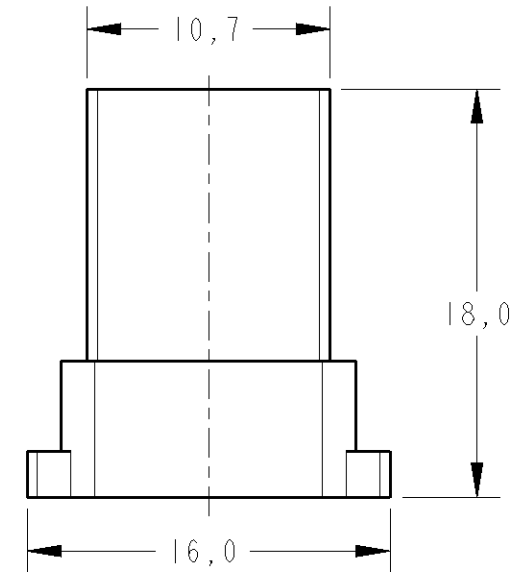
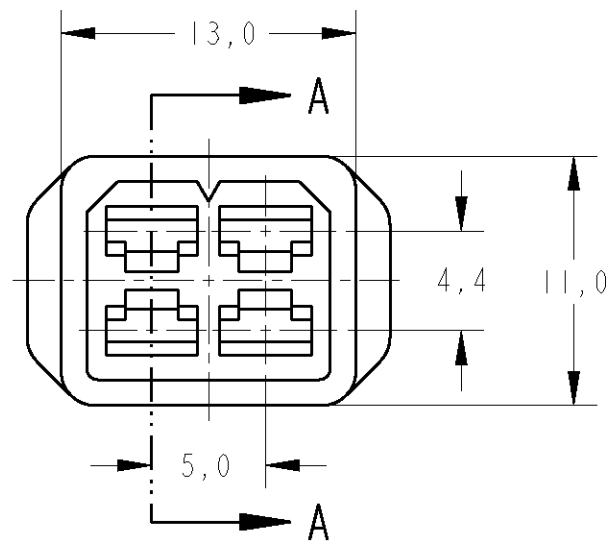
THIS DRAWING IS UNPUBLISHED. RELEASED FOR PUBLICATION - ALL RIGHTS RESERVED.

LOC	DIST	REVISIONS					
AP	-	P	LTR	DESCRIPTION	DATE	DWN	APVD
		G1		REVISED PER ECO-11-005139	19MAR11	RK	HMR

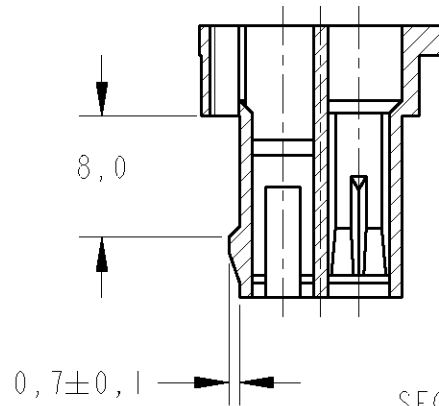
CAD Pro-E DO NOT REVISE EXCEPT BY CAD



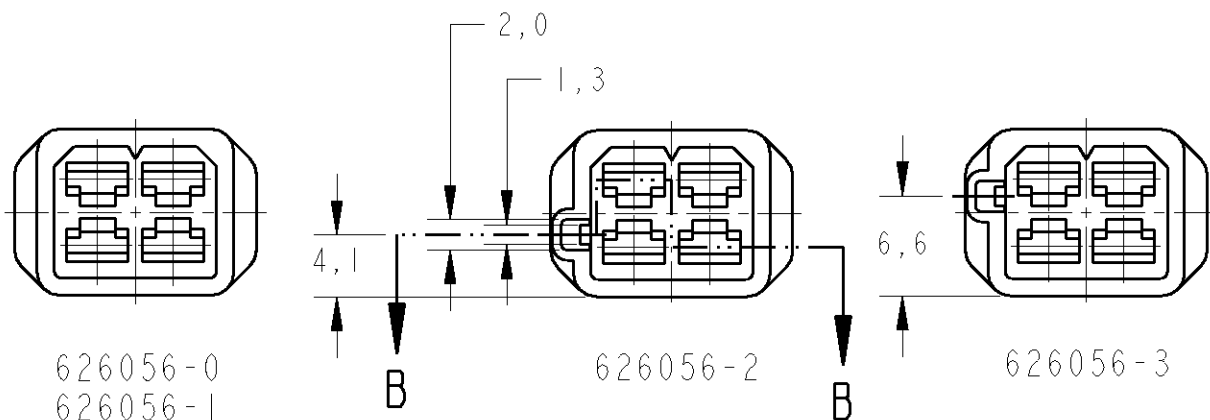
SECTION A-A



PERSPECTIVE VIEW SCALE 2:1



SECTION B-B



DETAILS FOR POLARIZATION

---	PRETO/BLACK	PA4.6 (HIGH TEMPERATURE)	626056-4
---	PRETO/BLACK	P.A. 6.6	626056-3
---	NATURAL	P.A. 6.6	626056-2
---	PRETO/BLACK	P.A. 6.6	626056-1
---	NATURAL	P.A. 6.6	626056-0
RAW MAT'L NO	FINISH	MATERIAL	PART NUMBER

DWN F.S.MARTINS 17JUN99		STE TE Connectivity	
CHK P.L.FARIA 28JUN99			
APVD J.M.M.NETO 28JUN99		NAME HOUSING, 4 POSN., .110 FASTIN-ON RCPT.	
PRODUCT SPEC -		SIZE A3 CAGE CODE 00779 C=626056	
APPLICATION SPEC -		DRAWING NO C-626056	
WEIGHT -		RESTRICTED TO -	
MATERIAL SEE TABLE		SCALE 3:1 SHEET 1 OF 1 REV G1	
TOLERANCES UNLESS OTHERWISE SPECIFIED:		CUSTOMER DRAWING	
DIMENSIONS: mm			
0 PLC ±-			
1 PLC ±0.3			
2 PLC ±-			
3 PLC ±-			
4 PLC ±-			
ANGLES ±-			
FINISH ±-			