

Chipsmall Limited consists of a professional team with an average of over 10 year of expertise in the distribution of electronic components. Based in Hongkong, we have already established firm and mutual-benefit business relationships with customers from,Europe,America and south Asia,supplying obsolete and hard-to-find components to meet their specific needs.

With the principle of “Quality Parts,Customers Priority,Honest Operation,and Considerate Service”,our business mainly focus on the distribution of electronic components. Line cards we deal with include Microchip,ALPS,ROHM,Xilinx,Pulse,ON,Everlight and Freescale. Main products comprise IC,Modules,Potentiometer,IC Socket,Relay,Connector.Our parts cover such applications as commercial,industrial, and automotives areas.

We are looking forward to setting up business relationship with you and hope to provide you with the best service and solution. Let us make a better world for our industry!



Contact us

Tel: +86-755-8981 8866 Fax: +86-755-8427 6832

Email & Skype: info@chipsmall.com Web: www.chipsmall.com

Address: A1208, Overseas Decoration Building, #122 Zhenhua RD., Futian, Shenzhen, China

8 7 6 5 4 3 2 1

DO NOT SCALE
DIMENSIONS IN mm.

METRIC

3rd ANGLE PROJECTION

C 626 241

G

F

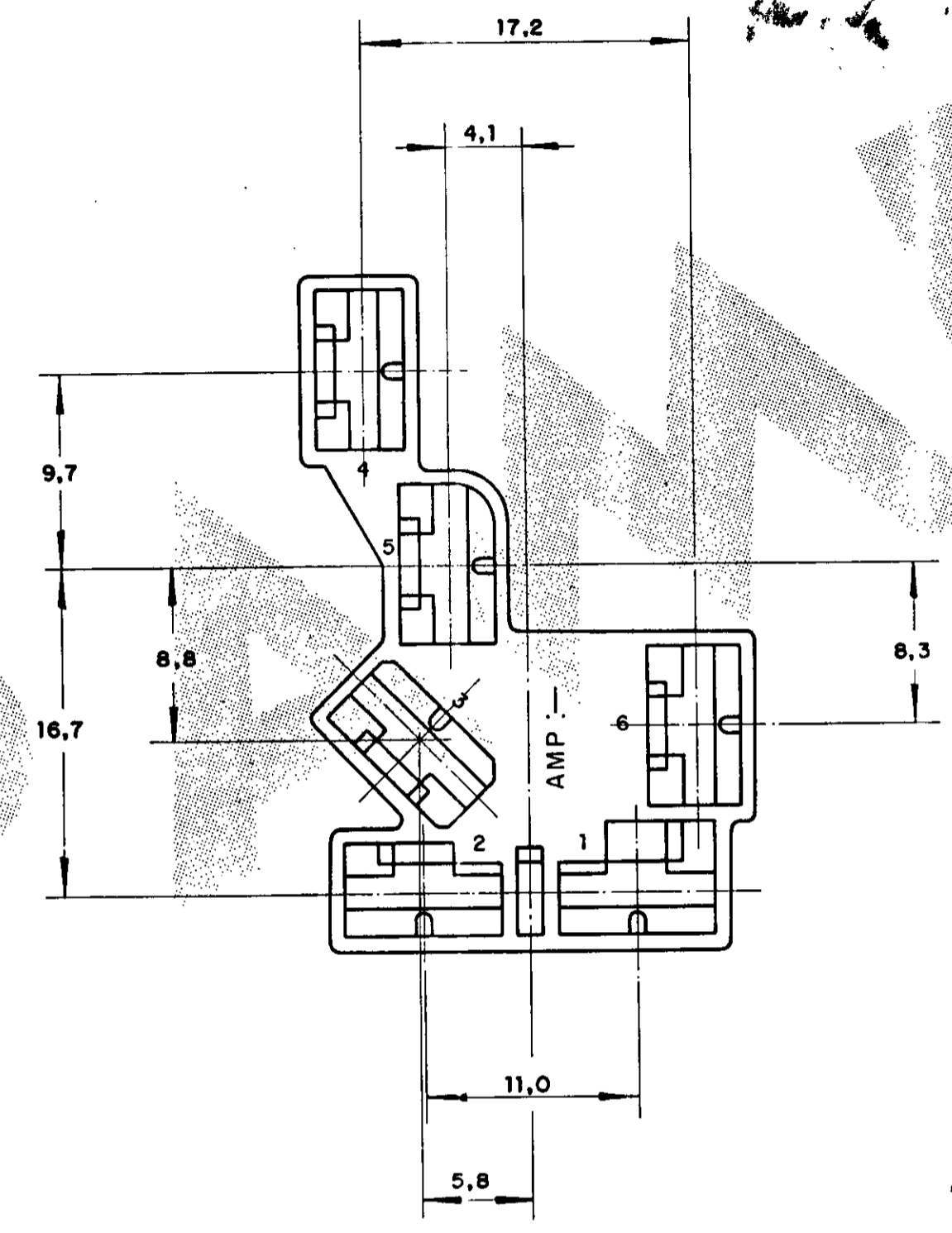
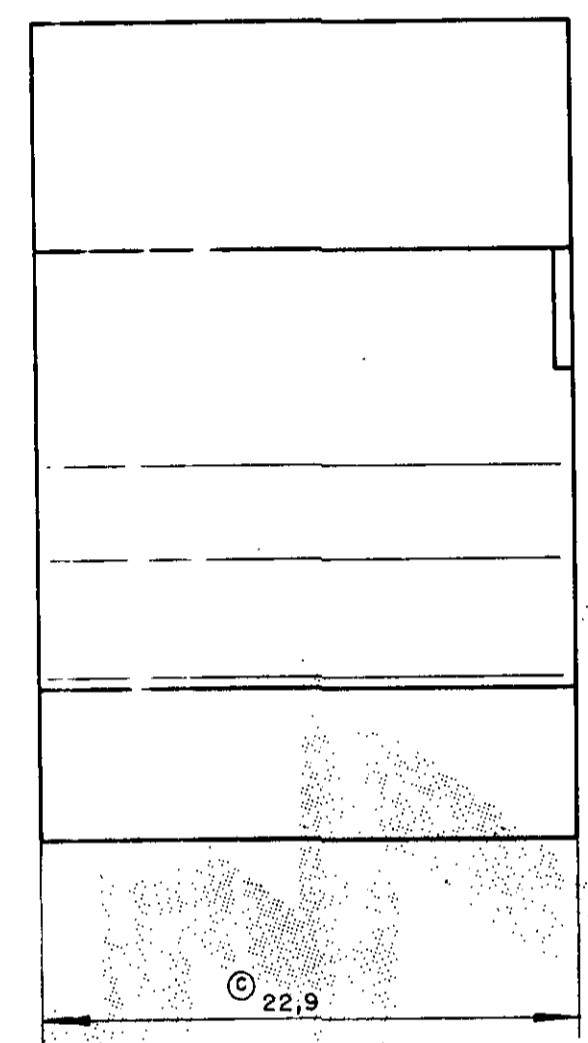
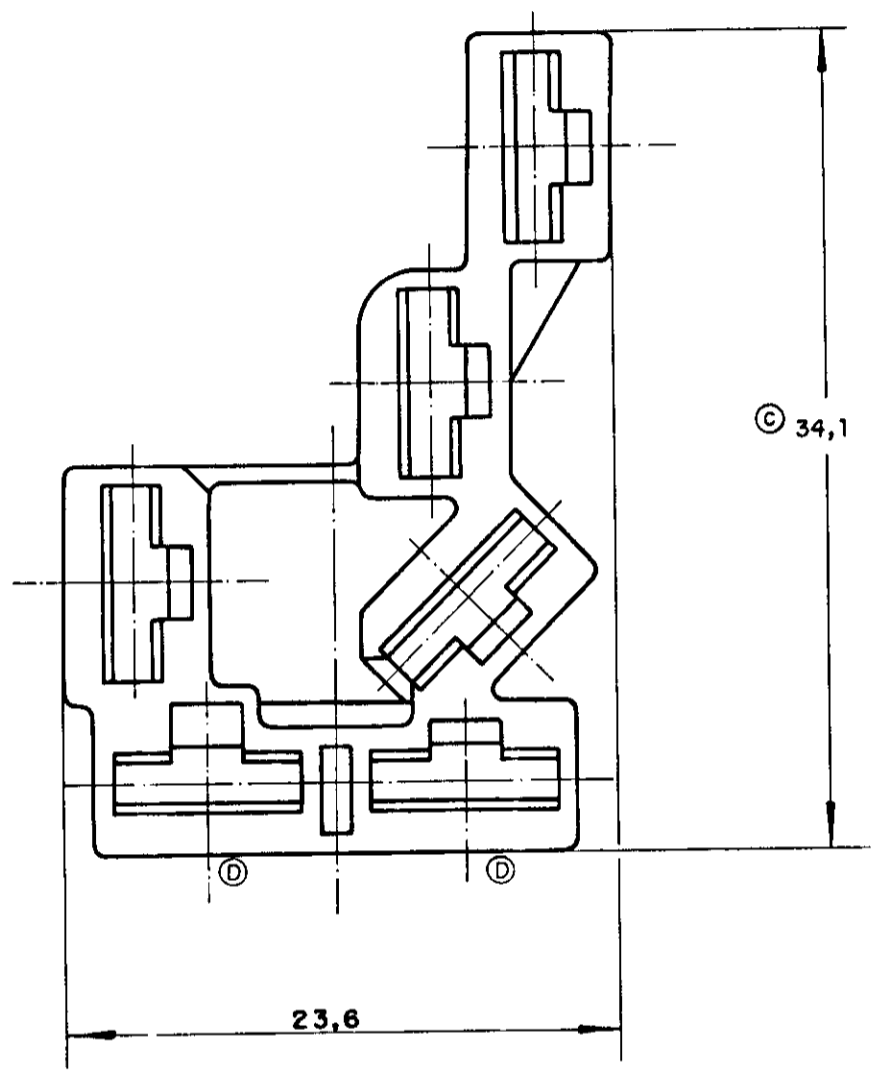
E

D

C

B

A



- ①- SEE RESTRICTED CUSTOMER DRAWING NUMBER 626241-1. ①- VER DESENHO RESTRITO 626241-1.
- ② OBSOLETE PARTS: OBSOLETE CIS STREAMLINING PER D.RENAUD/D.SINISI

② OBSOLETE	②	PRETO BLACK	P.A. 6.6	626 241 - 3
	③			626 241 - 2
	④			626 241 - 1
PART NUMBER V.W.		FINISH		MATERIAL
PART NUMBER		FINISH		MATERIAL
CUSTOMER DWG for REFERENCE ONLY		THIS DRAWING IS UNPUBLISHED RELEASED FOR PUBLICATION 19		
		C COPYRIGHT 1983 BY AMP DO BRASIL LTDA. ALL INTERNATIONAL RIGHTS RESERVED AMP PRODUCTS MAY BE COVERED BY U.S. AND FOREIGN PATENTS AND/OR PATENTS PENDING.		
		TOLERANCES UNLESS OTHERWISE STATED	INS DIA RANGE	WIRE RANGE
		DEC. ±0,5		
		ANGLES ±1°		
		AMP do BRASIL LTDA. São Paulo, Brasil		
		DESCRIPTION 6 WAY .250 FASTIN-ON REC. HSG		
		A2 DWG NO C 626 241		SHEET 1 OF 1
D1	REV PER ECO-09-026444	KK	AEG	17DEC08
D	REVISADO EC 415-95	M.R.B.	JRS	11/01/95
C	ERA 250 E 35,7 EON 3625	PF		07-01-93
B	REVISADO	G.F.M.	T.A.B.V.	4.6.84
A	REDES. C/ MODIFICAÇÕES	G.F.M.	T.A.B.V.	18.8.83
ISS	REVISION RECORD	DR	CHK	DATE