



Chipsmall Limited consists of a professional team with an average of over 10 year of expertise in the distribution of electronic components. Based in Hongkong, we have already established firm and mutual-benefit business relationships with customers from,Europe,America and south Asia,supplying obsolete and hard-to-find components to meet their specific needs.

With the principle of “Quality Parts,Customers Priority,Honest Operation,and Considerate Service”,our business mainly focus on the distribution of electronic components. Line cards we deal with include Microchip,ALPS,ROHM,Xilinx,Pulse,ON,Everlight and Freescale. Main products comprise IC,Modules,Potentiometer,IC Socket,Relay,Connector.Our parts cover such applications as commercial,industrial, and automotives areas.

We are looking forward to setting up business relationship with you and hope to provide you with the best service and solution. Let us make a better world for our industry!



Contact us

Tel: +86-755-8981 8866 Fax: +86-755-8427 6832

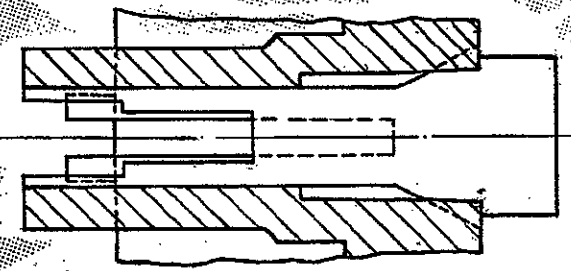
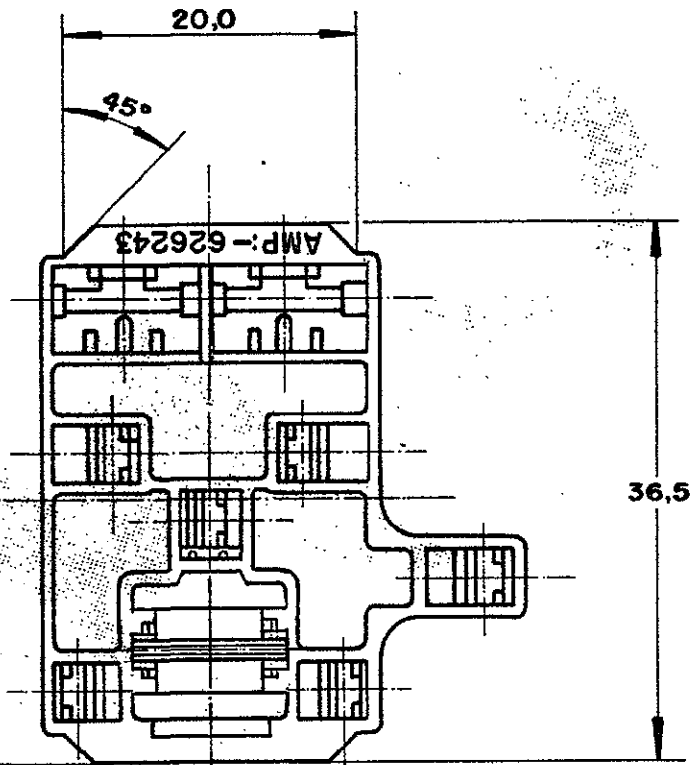
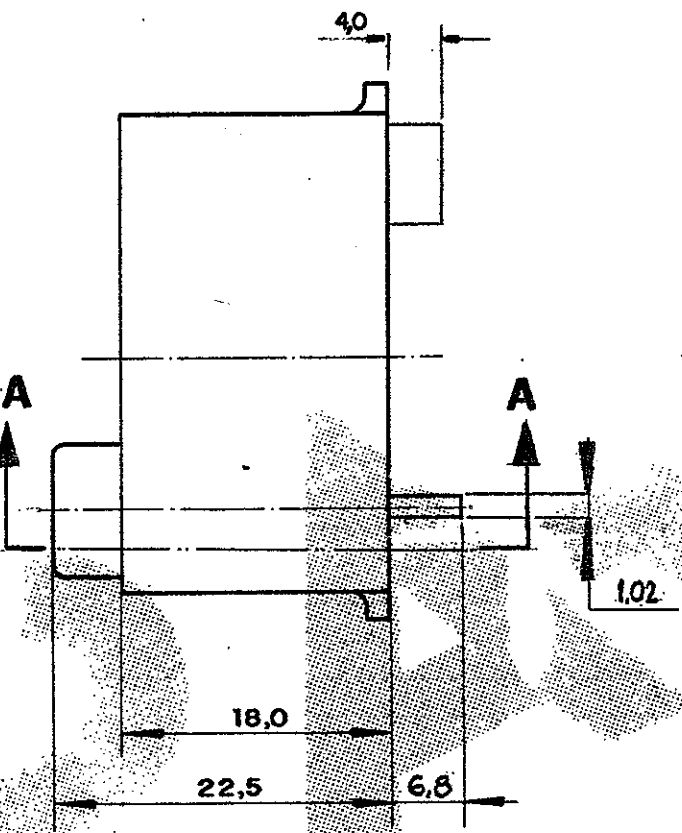
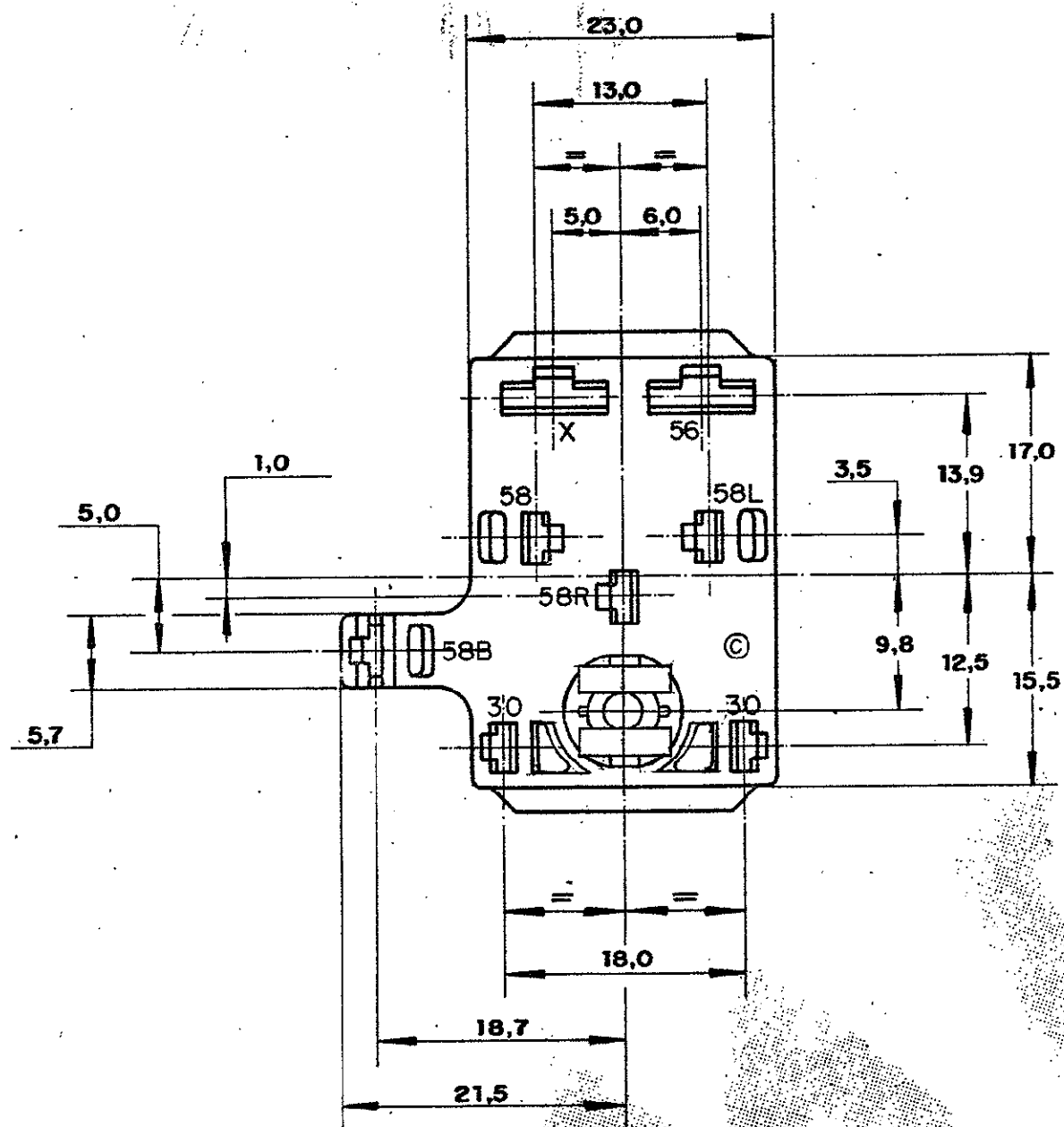
Email & Skype: info@chipsmall.com Web: www.chipsmall.com

Address: A1208, Overseas Decoration Building, #122 Zhenhua RD., Futian, Shenzhen, China



C 626243

DO NOT SCALE
DIMENSIONS IN METRIC
3rd ANGLE PROJECTION



SEÇÃO A-A

3
OBSOLETE

- ① - SEE RESTRICTED CUSTOMER DRAWING NUMBER 626 243-1.
- ② - CONNECTOR FOR .250 F-F, .110 F-F TERMINALS AND SPECIAL CONTACT 735 280 / 444 150
- ③ - OBSOLETE PARTS: OBSOLETE CIS STREAMLINING PER D.RENAUD/D.SINISI
- ① - VER DESENHO RESTRITO 626243-1.
- 2 - CONECTOR PARA TERMINAIS .250 F-F, .110 F-F E "SPECIAL CONTACT" 735280 / 444150

ITEM	FINISH	MATERIAL	DESCRIPTION	PART NUMBER
		NYLON 6.6	10WAY .110/.250 S. FASTIN - ON REC. HSG.	626 243 - 3
				626 243 - 2
				626 243 - 1

CUSTOMER DWG for REFERENCE ONLY				THIS DRAWING IS UNPUBLISHED RELEASED FOR PUBLICATION			
C4	REV PER ECO-09-026444	KK	AEG	17DEC09	© COPYRIGHT 1984 BY AMP DO BRASIL LTDA S.P. ALL INTERNATIONAL RIGHTS RESERVED AMP PRODUCTS MAY BE COVERED BY U.S. AND FOREIGN PATENTS AND/OR PATENTS PENDING.		
C3	REVISED BY EC:022-98	DAR.	REF. 13-FEB-98	DR	TOLERANCES UNLESS OTHERWISE STATED	INS. DIA. RANGE	
C2	REVISED EC334/96	NCL	SIGS 27-AUG-96	DR	DEC. ± 0,3	WIRE RANGE	
C1	REVISED EC265/96	MRB	285 12-JUL-96	DR	ANGLES ± 1°	SCALE	
C	REVISED	MRB	285 1-NOV-95	DR	AMP do BRASIL LTDA. São Paulo, Brasil		
B	RIVISED	DORI	23-MAI-94	DR	DESCRIPTION HOUSING, 10 POSN., COMBINED		
A	REVISED	PF	21-5-91	DR	©		
ISS	REVISION RECORD	DR	CHK	DATE	APP.	A3 DWG NO C 626243 SHEET 1 of 1	