



Chipsmall Limited consists of a professional team with an average of over 10 year of expertise in the distribution of electronic components. Based in Hongkong, we have already established firm and mutual-benefit business relationships with customers from,Europe,America and south Asia,supplying obsolete and hard-to-find components to meet their specific needs.

With the principle of “Quality Parts,Customers Priority,Honest Operation,and Considerate Service”,our business mainly focus on the distribution of electronic components. Line cards we deal with include Microchip,ALPS,ROHM,Xilinx,Pulse,ON,Everlight and Freescale. Main products comprise IC,Modules,Potentiometer,IC Socket,Relay,Connector.Our parts cover such applications as commercial,industrial, and automotives areas.

We are looking forward to setting up business relationship with you and hope to provide you with the best service and solution. Let us make a better world for our industry!



## Contact us

Tel: +86-755-8981 8866 Fax: +86-755-8427 6832

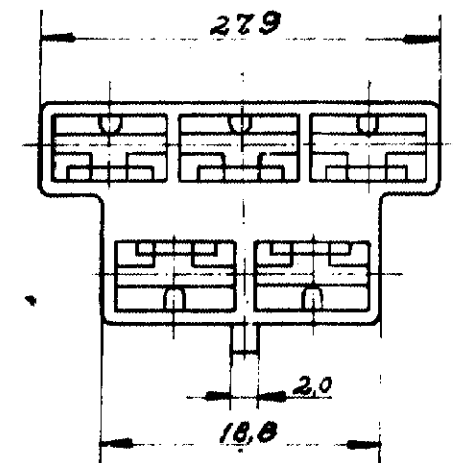
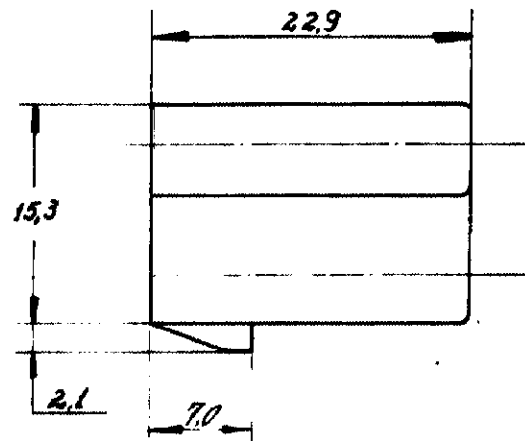
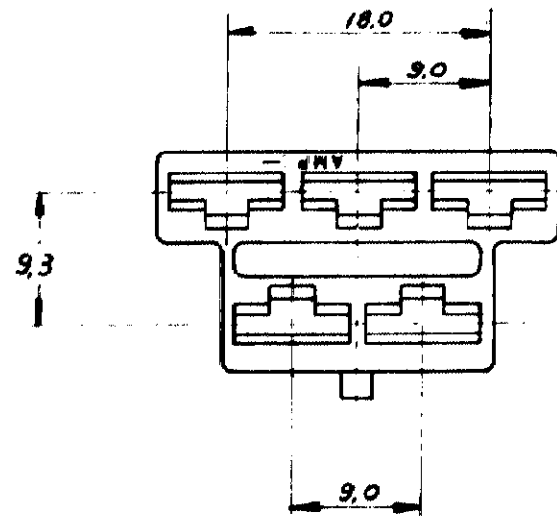
Email & Skype: info@chipsmall.com Web: www.chipsmall.com

Address: A1208, Overseas Decoration Building, #122 Zhenhua RD., Futian, Shenzhen, China




Copyright 1981 by AMP DO BRASIL - S. P. All International Rights Reserved  
 AMP Incorporated products covered by U. S. and Foreign patents and/or patents pending

REVISIONS						
P	F	ZONE	LTR	DESCRIPTION	DATE	APPROVED
		0		ERA P80-29113		
		A		REVISADO	6/10/81	<i>de</i>
		B		DIM. 27,9 para 27,6 - DIM. 18,8 para 18,5	10/18/81	<i>de</i>
		C		REVISADO	26/06/83	<i>de</i>



ESP. DE PAREDE 0,8

NATURAL	NYLON 6/6	626535-1
COR	MATERIAL	PART NO

UNLESS OTHERWISE SPECIFIED DIMENSIONS ARE IN MM TOLERANCES ON: DECIMALS ±0.2 ANGLES ±1°	CONTRACT NO	 AMP DO BRASIL Pa. Inc. Ind.	
	DE <i>Posato</i> 17/2/81		
MATERIAL	APPD	NAME	
VER TABELA	APPD	5 WAY FASTIN-ON RECEPT HOUSING 250 SER.	
FINISH	DSGN APPD	SIZE	DRAWING NO
VER TABELA	OTHER APPD	<b>B</b>	626535
		SCALE 2:1	SHEET
		REV <i>C</i>	

CUSTOMER DRAWING