



Chipsmall Limited consists of a professional team with an average of over 10 year of expertise in the distribution of electronic components. Based in Hongkong, we have already established firm and mutual-benefit business relationships with customers from,Europe,America and south Asia,supplying obsolete and hard-to-find components to meet their specific needs.

With the principle of “Quality Parts,Customers Priority,Honest Operation,and Considerate Service”,our business mainly focus on the distribution of electronic components. Line cards we deal with include Microchip,ALPS,ROHM,Xilinx,Pulse,ON,Everlight and Freescale. Main products comprise IC,Modules,Potentiometer,IC Socket,Relay,Connector.Our parts cover such applications as commercial,industrial, and automotives areas.

We are looking forward to setting up business relationship with you and hope to provide you with the best service and solution. Let us make a better world for our industry!



## Contact us

Tel: +86-755-8981 8866 Fax: +86-755-8427 6832

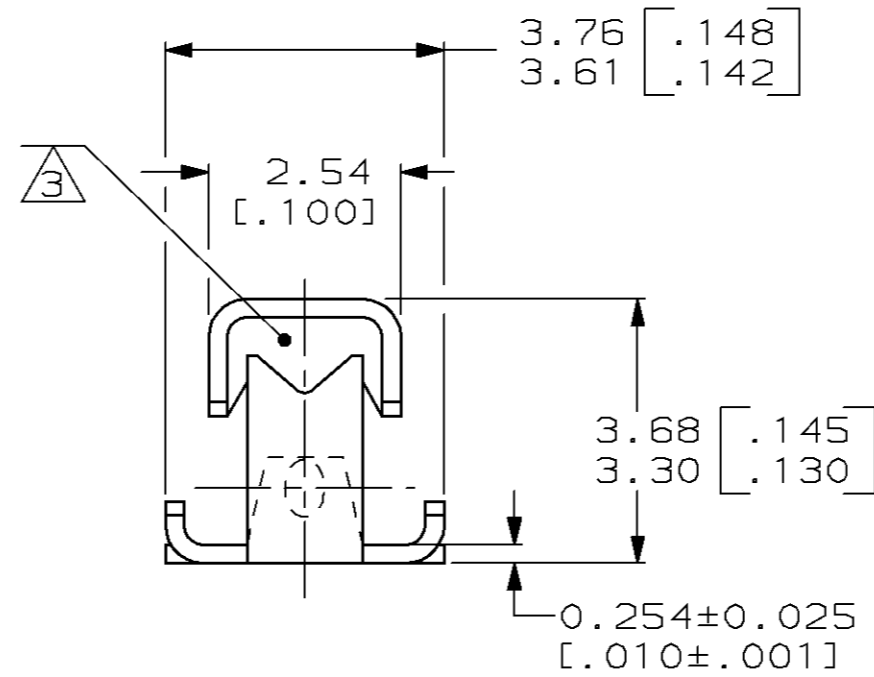
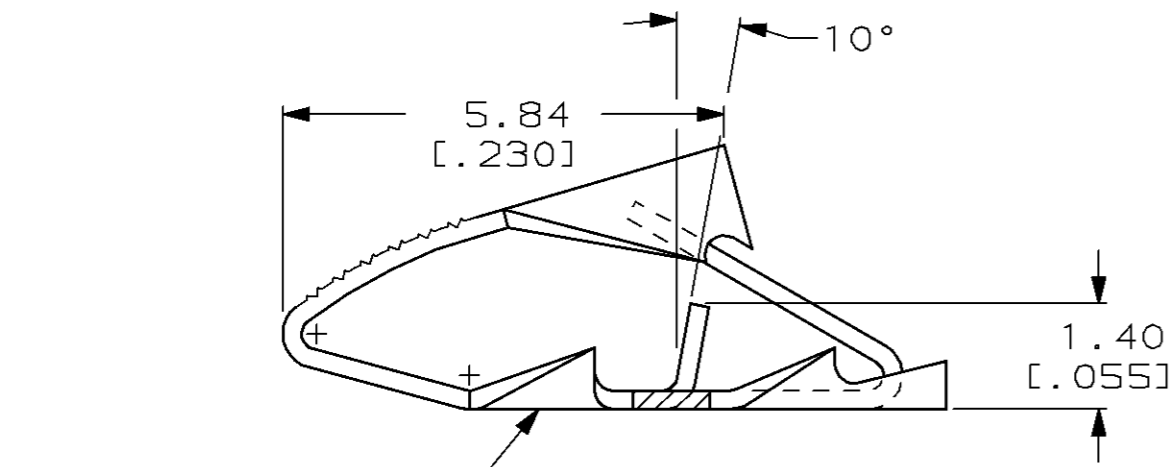
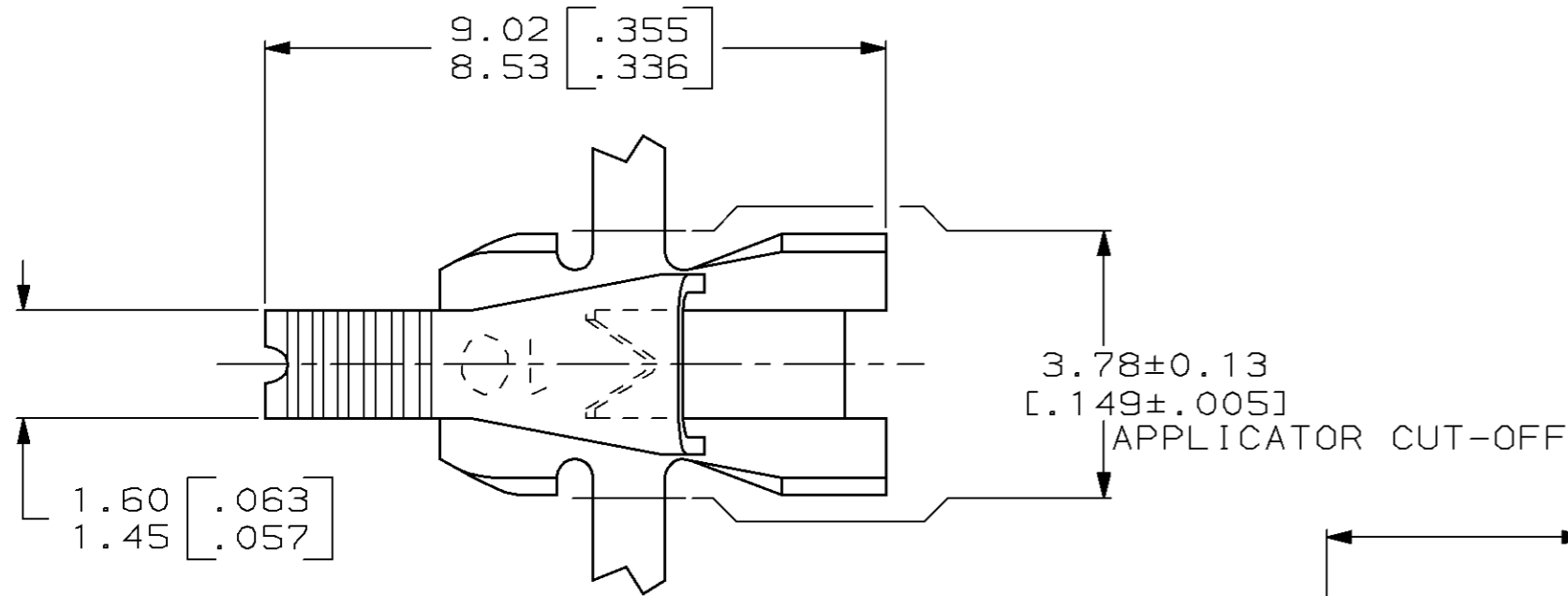
Email & Skype: info@chipsmall.com Web: www.chipsmall.com

Address: A1208, Overseas Decoration Building, #122 Zhenhua RD., Futian, Shenzhen, China



THIS DRAWING IS UNPUBLISHED. RELEASED FOR PUBLICATION, 19 .  
 © COPYRIGHT 19 BY AMP INCORPORATED. ALL INTERNATIONAL RIGHTS RESERVED.

LOC	DIST	P	F	REVISIONS				
				ZONE	LTR	DESCRIPTION	DATE	APPD
AF	50				M	REVISE PER ECN 0G1A-0178-98	06AUG98	SU/KR



- 1 CONTINUOUS STRIP ON REELS WITH TERMINALS LOCATED ON 6.10 [.240] CENTERS.
- 2 IDENTIFICATION NUMBER (10) FOR MAGNET WIRE RANGE.
- 3 SOLID OR FUSED STRANDED LEAD WIRE 0.3-0.9mm<sup>2</sup> [#22-#18] AWG.



0.05-0.13mm [#44-#36] AWG		62780-1	
COPPER MAGNET WIRE RANGE		PART NUMBER	
DO NOT SCALE PRINT, UNLESS SPECIFIED. DIMENSIONS IN mm [INCHES]. TOLERANCES ON: 2 PLC DEC ± - 3 PLC DEC ± 0.25 [.010] ANGLES ± -		AMP INCORPORATED Harrisburg, Pa. 17105	
MATERIAL H02 HARD BRASS		NAME TERMINAL, POKE-IN, MINI MAG-MATE™	
FINISH 0.002032 [.000080] MIN TIN PER MIL-T-10727		SIZE <b>B</b>	CAGE CODE 00779
DR 9/27/89 MICHAEL S. FEHER CHK 10/12/89 JEFF R. RUTH APPD 10/12/89 NELSON E. NEFF APPD 10/12/89 TERRY L. SHUTTER PRODUCT SPEC - APPLICATION SPEC 114-2047 WEIGHT -		DRAWING NO 62780	SHEET 1 OF 1
		SCALE 10:1	

CUSTOMER DRAWING