



Chipsmall Limited consists of a professional team with an average of over 10 year of expertise in the distribution of electronic components. Based in Hongkong, we have already established firm and mutual-benefit business relationships with customers from,Europe,America and south Asia,supplying obsolete and hard-to-find components to meet their specific needs.

With the principle of "Quality Parts,Customers Priority,Honest Operation,and Considerate Service",our business mainly focus on the distribution of electronic components. Line cards we deal with include Microchip,ALPS,ROHM,Xilinx,Pulse,ON,Everlight and Freescale. Main products comprise IC,Modules,Potentiometer,IC Socket,Relay,Connector.Our parts cover such applications as commercial,industrial, and automotives areas.

We are looking forward to setting up business relationship with you and hope to provide you with the best service and solution. Let us make a better world for our industry!



Contact us

Tel: +86-755-8981 8866 Fax: +86-755-8427 6832

Email & Skype: info@chipsmall.com Web: www.chipsmall.com

Address: A1208, Overseas Decoration Building, #122 Zhenhua RD., Futian, Shenzhen, China

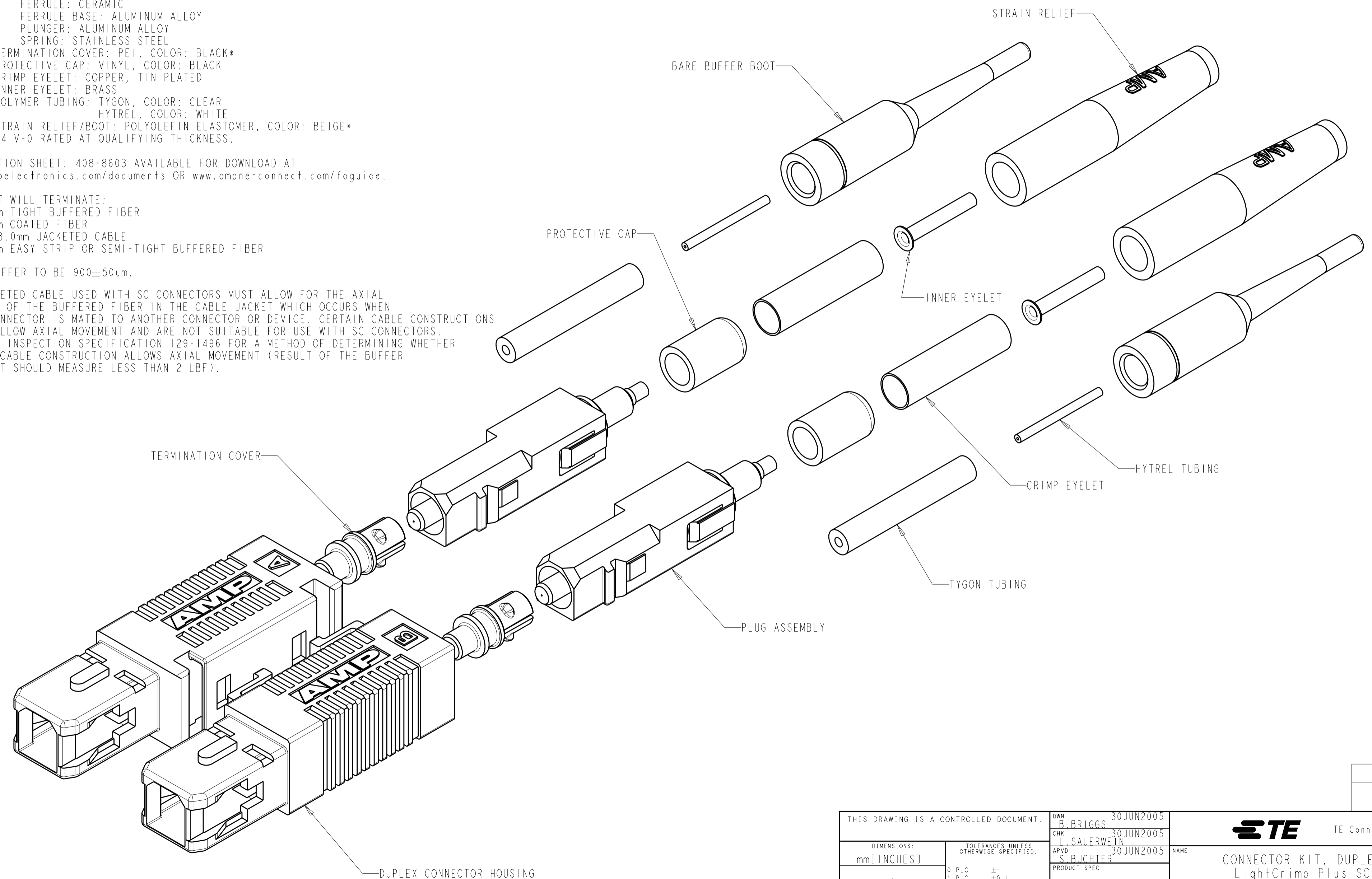


THIS DRAWING IS UNPUBLISHED. RELEASED FOR PUBLICATION 20
 © COPYRIGHT 20 ALL RIGHTS RESERVED.

| LOC | DIST | REVISIONS | | | |
|-----|------|---------------------------|-----------|-----|------|
| P | LTR | DESCRIPTION | DATE | DWN | APVD |
| CE | 00 | | | | |
| | D2 | REVISED PER ECO-11-005139 | 27APR2011 | RK | HMR |

1. MATERIAL:
- CONNECTOR HOUSING: POLYESTER PBT, COLOR: BEIGE*
 - PLUG ASSEMBLY:
 - PLUG BODY: PAS, COLOR: BEIGE*
 - INTERNAL BODY: BRASS, NICKEL PLATED
 - INTERNAL COMPONENTS: PEI, COLOR: NATURAL
 - FERRULE: CERAMIC
 - FERRULE BASE: ALUMINUM ALLOY
 - PLUNGER: ALUMINUM ALLOY
 - SPRING: STAINLESS STEEL
 - TERMINATION COVER: PEI, COLOR: BLACK*
 - PROTECTIVE CAP: VINYL, COLOR: BLACK
 - CRIMP EYELET: COPPER, TIN PLATED
 - INNER EYELET: BRASS
 - POLYMER TUBING: TYGON, COLOR: CLEAR
HYTREL, COLOR: WHITE
 - STRAIN RELIEF/BOOT: POLYOLEFIN ELASTOMER, COLOR: BEIGE*
- *UL94 V-0 RATED AT QUALIFYING THICKNESS.

2. INSTRUCTION SHEET: 408-8603 AVAILABLE FOR DOWNLOAD AT
www.tycoelectronics.com/documents OR www.ampnetconnect.com/foguide.
3. THIS KIT WILL TERMINATE:
- 900um TIGHT BUFFERED FIBER
 - 250um COATED FIBER
 - 2.5-3.0mm JACKETED CABLE
 - 900um EASY STRIP OR SEMI-TIGHT BUFFERED FIBER
4. TIGHT BUFFER TO BE 900±50um.
5. ANY JACKETED CABLE USED WITH SC CONNECTORS MUST ALLOW FOR THE AXIAL MOVEMENT OF THE BUFFERED FIBER IN THE CABLE JACKET WHICH OCCURS WHEN AN SC CONNECTOR IS MATED TO ANOTHER CONNECTOR OR DEVICE. CERTAIN CABLE CONSTRUCTIONS DO NOT ALLOW AXIAL MOVEMENT AND ARE NOT SUITABLE FOR USE WITH SC CONNECTORS. REFER TO INSPECTION SPECIFICATION 129-1496 FOR A METHOD OF DETERMINING WHETHER A GIVEN CABLE CONSTRUCTION ALLOWS AXIAL MOVEMENT (RESULT OF THE BUFFER PULL TEST SHOULD MEASURE LESS THAN 2 LBF).



6278009-1
PART NUMBER

| | | | | | | | | | | | | | | | | |
|--|---------|---------------------------------|-----------------------|---|-------|------|-------|-------|-------|--------|-------|---------|--------|---|--------|--|
| THIS DRAWING IS A CONTROLLED DOCUMENT. | | DWN B. BRIGGS 30 JUN 2005 | TE Connectivity | | | | | | | | | | | | | |
| DIMENSIONS: mm [INCHES] | | CHK L. SAUERWEIN 30 JUN 2005 | | | | | | | | | | | | | | |
| TOLERANCES UNLESS OTHERWISE SPECIFIED: | | APVD S. BUCHTER 30 JUN 2005 | | | | | | | | | | | | | | |
| <table border="1"> <tr><td>0 PLC</td><td>±</td></tr> <tr><td>1 PLC</td><td>±0.1</td></tr> <tr><td>2 PLC</td><td>±0.02</td></tr> <tr><td>3 PLC</td><td>±0.005</td></tr> <tr><td>4 PLC</td><td>±0.0005</td></tr> <tr><td>ANGLES</td><td>±</td></tr> <tr><td>FINISH</td><td></td></tr> </table> | | 0 PLC | | ± | 1 PLC | ±0.1 | 2 PLC | ±0.02 | 3 PLC | ±0.005 | 4 PLC | ±0.0005 | ANGLES | ± | FINISH | |
| 0 PLC | ± | | | | | | | | | | | | | | | |
| 1 PLC | ±0.1 | | | | | | | | | | | | | | | |
| 2 PLC | ±0.02 | | | | | | | | | | | | | | | |
| 3 PLC | ±0.005 | | | | | | | | | | | | | | | |
| 4 PLC | ±0.0005 | | | | | | | | | | | | | | | |
| ANGLES | ± | | | | | | | | | | | | | | | |
| FINISH | | | | | | | | | | | | | | | | |
| MATERIAL | | PRODUCT SPEC - | SIZE A2 | | | | | | | | | | | | | |
| | | APPLICATION SPEC - | CAGE CODE 00779 | | | | | | | | | | | | | |
| | | WEIGHT - | DRAWING NO 6278009 | | | | | | | | | | | | | |
| CUSTOMER DRAWING | | RESTRICTED TO - | SCALE 4:1 | | | | | | | | | | | | | |
| | | | SHEET 1 | | | | | | | | | | | | | |
| | | | OF 1 | | | | | | | | | | | | | |
| | | | REV D2 | | | | | | | | | | | | | |