



Chipsmall Limited consists of a professional team with an average of over 10 year of expertise in the distribution of electronic components. Based in Hongkong, we have already established firm and mutual-benefit business relationships with customers from,Europe,America and south Asia,supplying obsolete and hard-to-find components to meet their specific needs.

With the principle of "Quality Parts,Customers Priority,Honest Operation,and Considerate Service",our business mainly focus on the distribution of electronic components. Line cards we deal with include Microchip,ALPS,ROHM,Xilinx,Pulse,ON,Everlight and Freescale. Main products comprise IC,Modules,Potentiometer,IC Socket,Relay,Connector.Our parts cover such applications as commercial,industrial, and automotives areas.

We are looking forward to setting up business relationship with you and hope to provide you with the best service and solution. Let us make a better world for our industry!



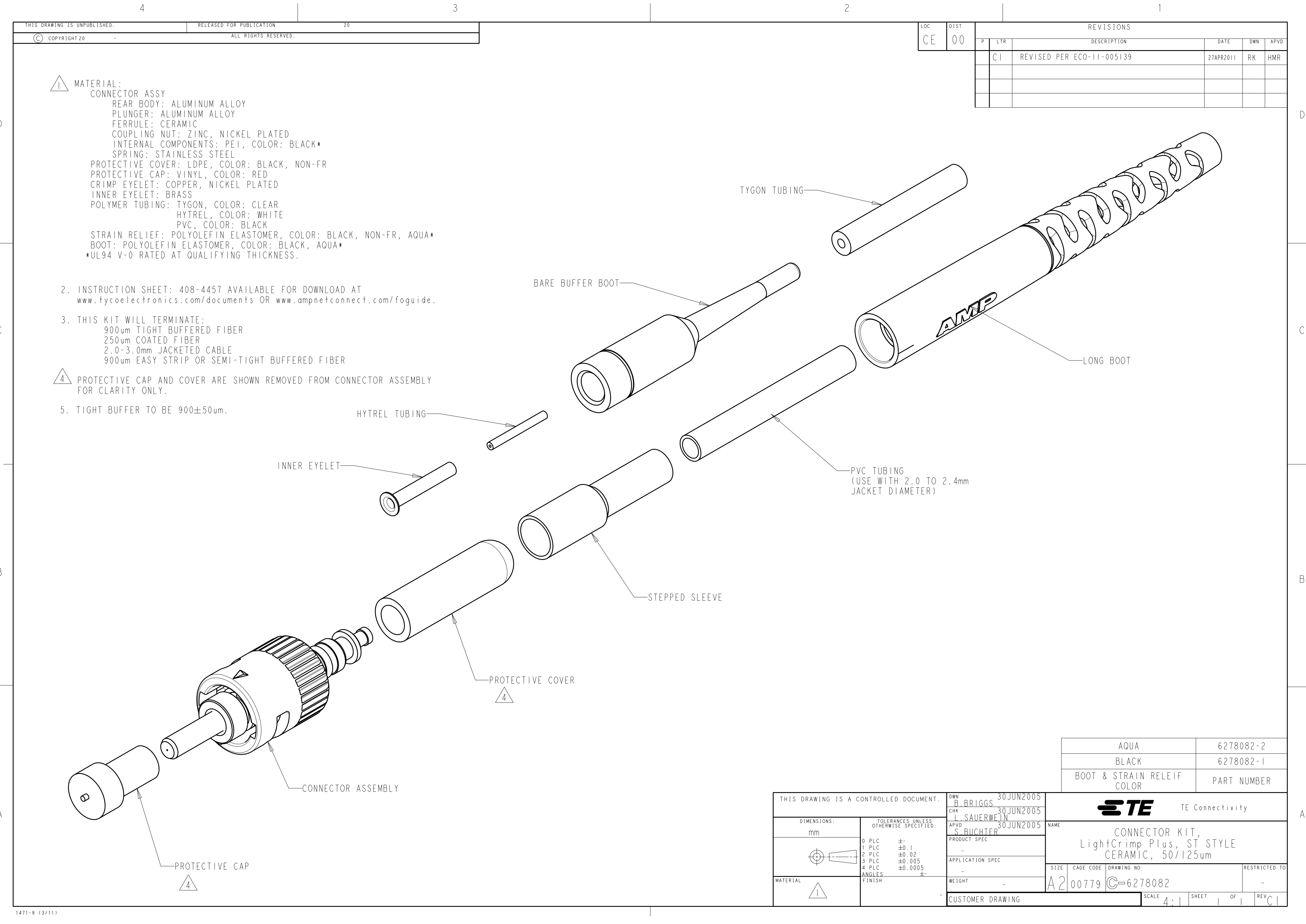
## Contact us

Tel: +86-755-8981 8866 Fax: +86-755-8427 6832

Email & Skype: [info@chipsmall.com](mailto:info@chipsmall.com) Web: [www.chipsmall.com](http://www.chipsmall.com)

Address: A1208, Overseas Decoration Building, #122 Zhenhua RD., Futian, Shenzhen, China





- 1 MATERIAL:  
CONNECTOR ASSY  
REAR BODY: ALUMINUM ALLOY  
PLUNGER: ALUMINUM ALLOY  
FERRULE: CERAMIC  
COUPLING NUT: ZINC, NICKEL PLATED  
INTERNAL COMPONENTS: PEI, COLOR: BLACK\*  
SPRING: STAINLESS STEEL  
PROTECTIVE COVER: LDPE, COLOR: BLACK, NON-FR  
PROTECTIVE CAP: VINYL, COLOR: RED  
CRIMP EYELET: COPPER, NICKEL PLATED  
INNER EYELET: BRASS  
POLYMER TUBING: TYGON, COLOR: CLEAR  
HYTREL, COLOR: WHITE  
PVC, COLOR: BLACK  
STRAIN RELIEF: POLYOLEFIN ELASTOMER, COLOR: BLACK, NON-FR, AQUA\*  
BOOT: POLYOLEFIN ELASTOMER, COLOR: BLACK, AQUA\*  
\*UL94 V-0 RATED AT QUALIFYING THICKNESS.


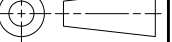
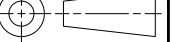

2. INSTRUCTION SHEET: 408-4457 AVAILABLE FOR DOWNLOAD AT  
[www.tycoelectronics.com/documents](http://www.tycoelectronics.com/documents) OR [www.ampnetconnect.com/foguide](http://www.ampnetconnect.com/foguide).

3. THIS KIT WILL TERMINATE:  
900um TIGHT BUFFERED FIBER  
250um COATED FIBER  
2.0-3.0mm JACKETED CABLE  
900um EASY STRIP OR SEMI-TIGHT BUFFERED FIBER

4 PROTECTIVE CAP AND COVER ARE SHOWN REMOVED FROM CONNECTOR ASSEMBLY  
FOR CLARITY ONLY.

5. TIGHT BUFFER TO BE 900±50um.

LOC		DIST		REVISIONS					
CE		00		P	LTR	DESCRIPTION	DATE	DWN	APVD
					CI	REVISED PER ECO-11-005139	27APR2011	RK	HMR

THIS DRAWING IS A CONTROLLED DOCUMENT.		DWN B. BRIGGS 30 JUN 2005		 TE Connectivity			
		CHK L. SAUERWEIN 30 JUN 2005					
DIMENSIONS: mm		TOLERANCES UNLESS OTHERWISE SPECIFIED:		APVD S. BUCHTER 30 JUN 2005		NAME	
		0 PLC ±-		PRODUCT SPEC		CONNECTOR KIT, LightCrimp Plus, ST STYLE CERAMIC, 50/125um	
		1 PLC ±0.1		-			
		2 PLC ±0.02		-			
		3 PLC ±0.005		APPLICATION SPEC		SIZE CAGE CODE DRAWING NO RESTRICTED TO	
		4 PLC ±0.0005		-			
		ANGLES ±-		-			
MATERIAL 		FINISH		WEIGHT -		A2 00779 C=6278082 -	
				CUSTOMER DRAWING		SCALE 4:1 SHEET 1 OF 1 REV C1	