



Chipsmall Limited consists of a professional team with an average of over 10 year of expertise in the distribution of electronic components. Based in Hongkong, we have already established firm and mutual-benefit business relationships with customers from,Europe,America and south Asia,supplying obsolete and hard-to-find components to meet their specific needs.

With the principle of “Quality Parts,Customers Priority,Honest Operation,and Considerate Service”,our business mainly focus on the distribution of electronic components. Line cards we deal with include Microchip,ALPS,ROHM,Xilinx,Pulse,ON,Everlight and Freescale. Main products comprise IC,Modules,Potentiometer,IC Socket,Relay,Connector.Our parts cover such applications as commercial,industrial, and automotives areas.

We are looking forward to setting up business relationship with you and hope to provide you with the best service and solution. Let us make a better world for our industry!



Contact us

Tel: +86-755-8981 8866 Fax: +86-755-8427 6832

Email & Skype: info@chipsmall.com Web: www.chipsmall.com

Address: A1208, Overseas Decoration Building, #122 Zhenhua RD., Futian, Shenzhen, China

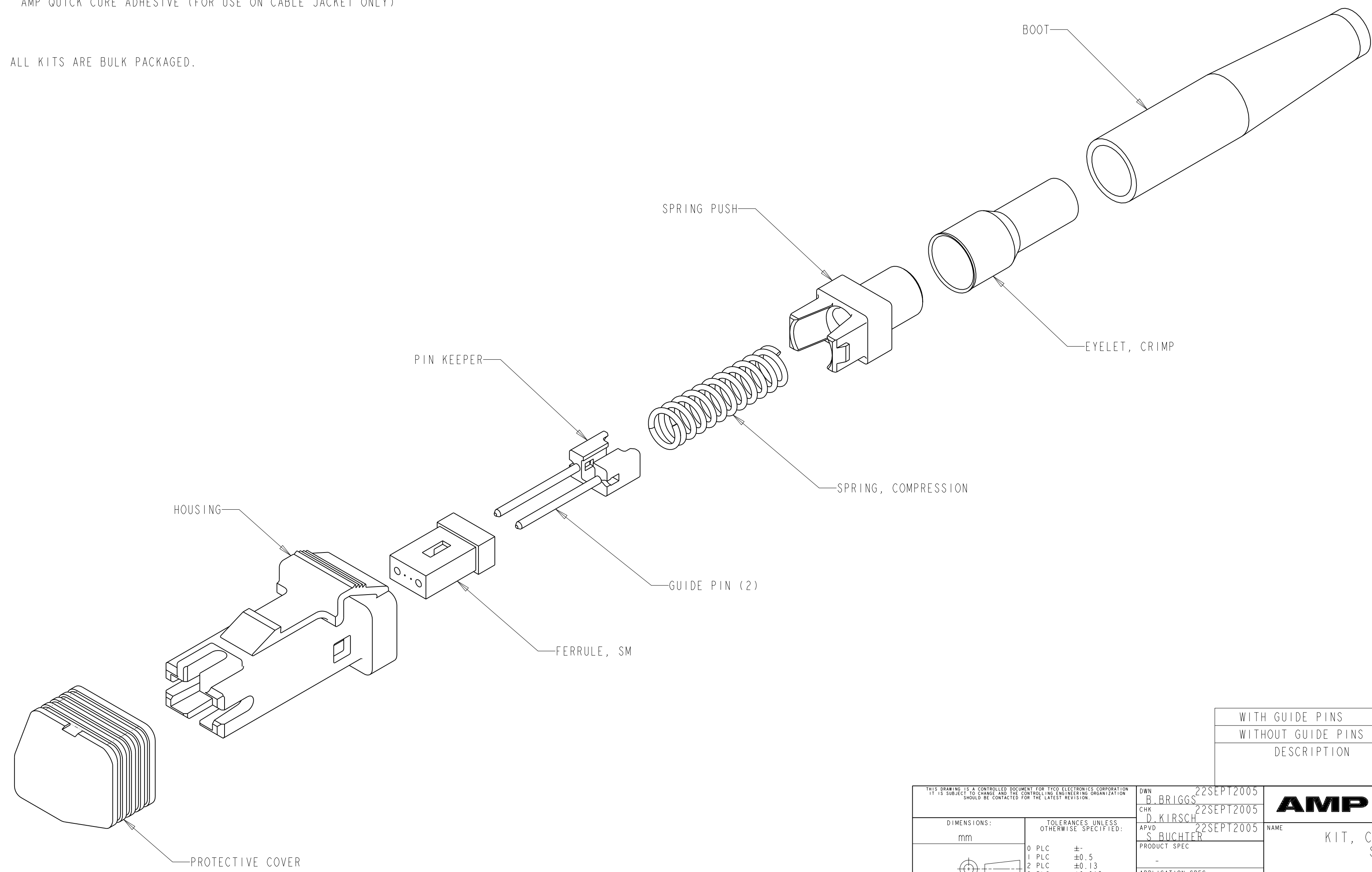


THIS DRAWING IS UNPUBLISHED. RELEASED FOR PUBLICATION
 © COPYRIGHT 19 BY TYCO ELECTRONICS CORPORATION. ALL RIGHTS RESERVED.

LOC	DIST	REVISIONS					
CE	00	P	LTR	DESCRIPTION	DATE	DWN	APVD
		A		RELEASE RoHS COMPLIANT	22SEPT2005	BB	DK

- 1. PROTECTIVE COVER: THERMOPLASTIC ELASTOMER, COLOR; BLACK
- HOUSING: THERMOPLASTIC, COLOR; BLACK
- FERRULE: PLASTIC, COLOR; BLACK
- GUIDE PINS; STAINLESS STEEL
- PIN KEEPER: THERMOPLASTIC, COLOR; BLUE
- SPRING: STAINLESS STEEL
- SPRING PUSH: THERMOPLASTIC, COLOR; BLACK
- EYELET: COPPER, TIN PLATED
- BOOT: THERMOPLASTIC ELASTOMER, COLOR; BLUE
- AMP QUICK CURE ADHESIVE (FOR USE ON CABLE JACKET ONLY)

2. ALL KITS ARE BULK PACKAGED.



WITH GUIDE PINS	6278399-2
WITHOUT GUIDE PINS	6278399-1
DESCRIPTION	PART NUMBER

<small>THIS DRAWING IS A CONTROLLED DOCUMENT FOR TYCO ELECTRONICS CORPORATION IT IS SUBJECT TO CHANGE AND THE CONTROLLING ENGINEERING ORGANIZATION SHOULD BE CONTACTED FOR THE LATEST REVISION.</small>		DWN B. BRIGGS 22SEPT2005 CHK D. KIRSCH 22SEPT2005 APVD S. BUCHTER 22SEPT2005	AMP AMP Incorporated Harrisburg, PA 17105-3608
DIMENSIONS: mm 	TOLERANCES UNLESS OTHERWISE SPECIFIED: 0 PLC ± 1 PLC ±0.5 2 PLC ±0.13 3 PLC ±0.013 4 PLC ±0.0001 ANGLES ±	NAME KIT, CONNECTOR, MT-RJ SINGLEMODE	SIZE CAGE CODE DRAWING NO RESTRICTED TO A2 00779 C=6278399 -
MATERIAL	FINISH	WEIGHT	CUSTOMER DRAWING
		SCALE 4:1	SHEET 1 OF 1 REV A