



Chipsmall Limited consists of a professional team with an average of over 10 year of expertise in the distribution of electronic components. Based in Hongkong, we have already established firm and mutual-benefit business relationships with customers from,Europe,America and south Asia,supplying obsolete and hard-to-find components to meet their specific needs.

With the principle of “Quality Parts,Customers Priority,Honest Operation,and Considerate Service”,our business mainly focus on the distribution of electronic components. Line cards we deal with include Microchip,ALPS,ROHM,Xilinx,Pulse,ON,Everlight and Freescale. Main products comprise IC,Modules,Potentiometer,IC Socket,Relay,Connector.Our parts cover such applications as commercial,industrial, and automotives areas.

We are looking forward to setting up business relationship with you and hope to provide you with the best service and solution. Let us make a better world for our industry!



Contact us

Tel: +86-755-8981 8866 Fax: +86-755-8427 6832

Email & Skype: info@chipsmall.com Web: www.chipsmall.com

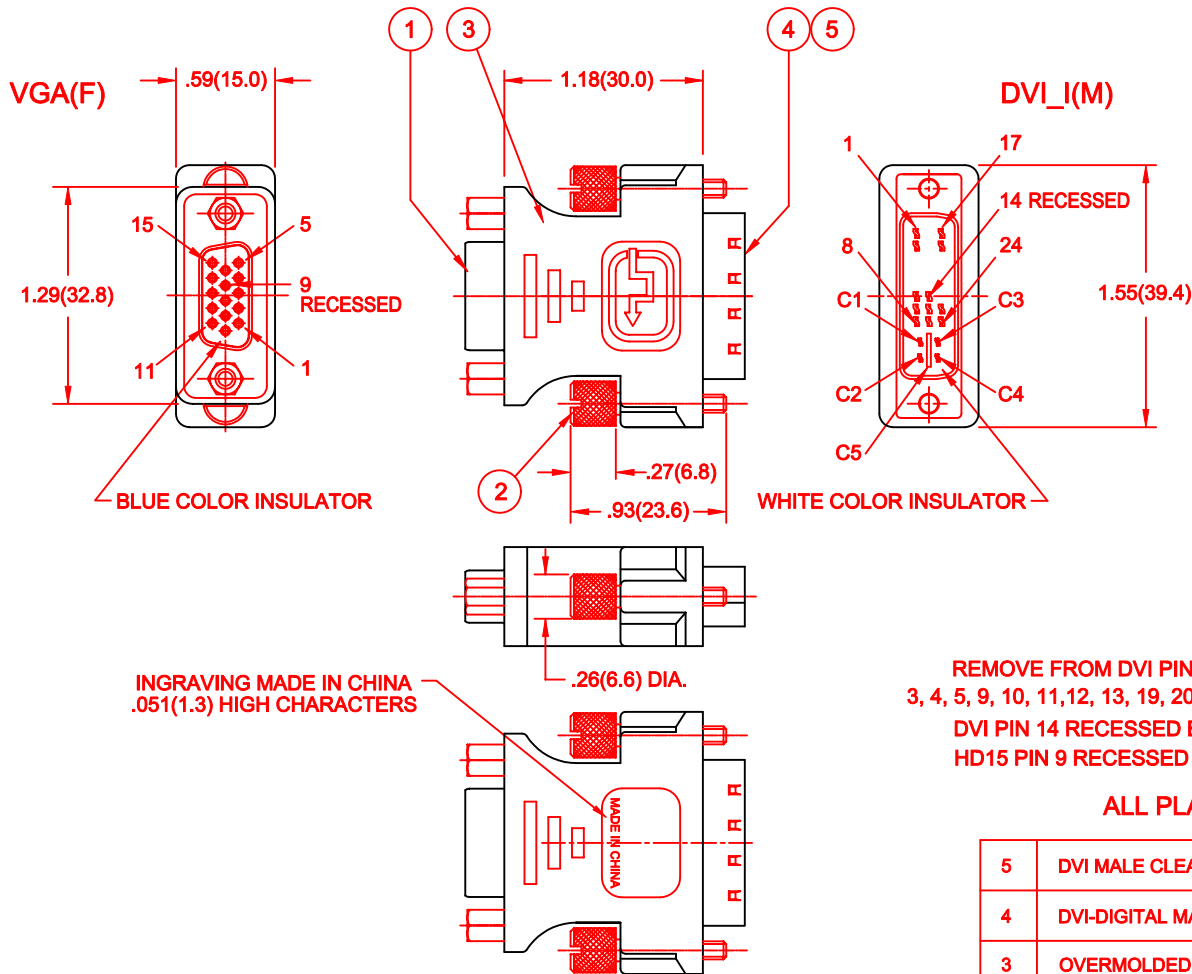
Address: A1208, Overseas Decoration Building, #122 Zhenhua RD., Futian, Shenzhen, China



THIS IS A C.A.D. GENERATED DRAWING
DO NOT MAKE MANUAL REVISIONS TO MASTER.

ISSUE NUMBER

ORIGINAL ①



SHELL	SHELL	GROUND
6, 7, 8	C5	ANALOG GROUND
13	C4	HORIZONTAL SYNC
3	C3	ANALOG BLUE
2	C2	ANALOG GREEN
1	C1	ANALOG RED
5, 10	15	GROUND (+5V AND HV SYNC)
9	14, 16	POWER +5V/HOT PLUG DETECT
14	8	VERTICAL SYNC
12	7	DDC DATA
15	6	DDC CLOCK
VGA	DVI	CABLE FUNCTION

CONTACTS CONNECTIONS

REMOVE FROM DVI PINS NO'S
3, 4, 5, 9, 10, 11, 12, 13, 19, 20, 21 AND 22
DVI PIN 14 RECESSED BY .030
HD15 PIN 9 RECESSED BY .050

ALL PLASTIC COMPONENTS MUST BE 94V-0 RATING

ELECTRICAL PERFORMANCE:

INSULATION RESISTANCE: 50M OHMS MIN. AT 500 VDC
DIELECTRIC WITHSTANDING VOLTAGE: 500VDC R.M.S. FOR 1 MINUTE.
CURRENT RATING: 1.5 AMP. MAX.
CONTACT RESISTANCE: 1 OHM MAX.
OPERATING TEMPERATURE: -25°C TO +85°C
DURABILITY: 500 CYCLES

ITEM	DESCRIPTION
5	DVI MALE CLEAR PLASTIC COVER
4	DVI-DIGITAL MALE (PLUG) CONNECTOR WHITE COLOR
3	OVERMOLDED BODY BLACK COLOR
2	THUMBSCREW BRASS OR STEEL NICKEL PLATED
1	HD-15 FEMALE (RECEPTACLE) CONNECTOR BLUE COLOR (PANTONE BLUE 661C)

DVI_I(M) TO VGA(F) SHORT ADAPTER

ACAD REFERENCE NO. 628-000-924W

DRAWN: F.BRIONES DATE: JUL. 5/02

CHECKED: DATE:

SCALE: SHEET 1 OF 1

DRAWING NUMBER ISSUE

628-000-924B 1

EDAC INC
TORONTO, ONTARIO
CANADA
YOUR CONNECTION TO QUALITY & SERVICE

THESE DRAWINGS AND SPECIFICATIONS
ARE THE PROPERTY OF EDAC INC., AND
SHALL NOT BE REPRODUCED, OR COPIED
OR USED AS THE BASIS FOR THE
MANUFACTURE OR SALE OF APPARATUS
WITHOUT WRITTEN PERMISSION.