



Chipsmall Limited consists of a professional team with an average of over 10 year of expertise in the distribution of electronic components. Based in Hongkong, we have already established firm and mutual-benefit business relationships with customers from,Europe,America and south Asia,supplying obsolete and hard-to-find components to meet their specific needs.

With the principle of “Quality Parts,Customers Priority,Honest Operation,and Considerate Service”,our business mainly focus on the distribution of electronic components. Line cards we deal with include Microchip,ALPS,ROHM,Xilinx,Pulse,ON,Everlight and Freescale. Main products comprise IC,Modules,Potentiometer,IC Socket,Relay,Connector.Our parts cover such applications as commercial,industrial, and automotives areas.

We are looking forward to setting up business relationship with you and hope to provide you with the best service and solution. Let us make a better world for our industry!



Contact us

Tel: +86-755-8981 8866 Fax: +86-755-8427 6832

Email & Skype: info@chipsmall.com Web: www.chipsmall.com

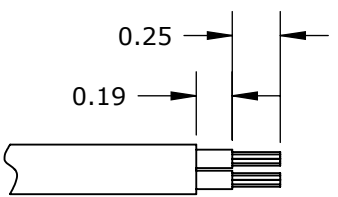
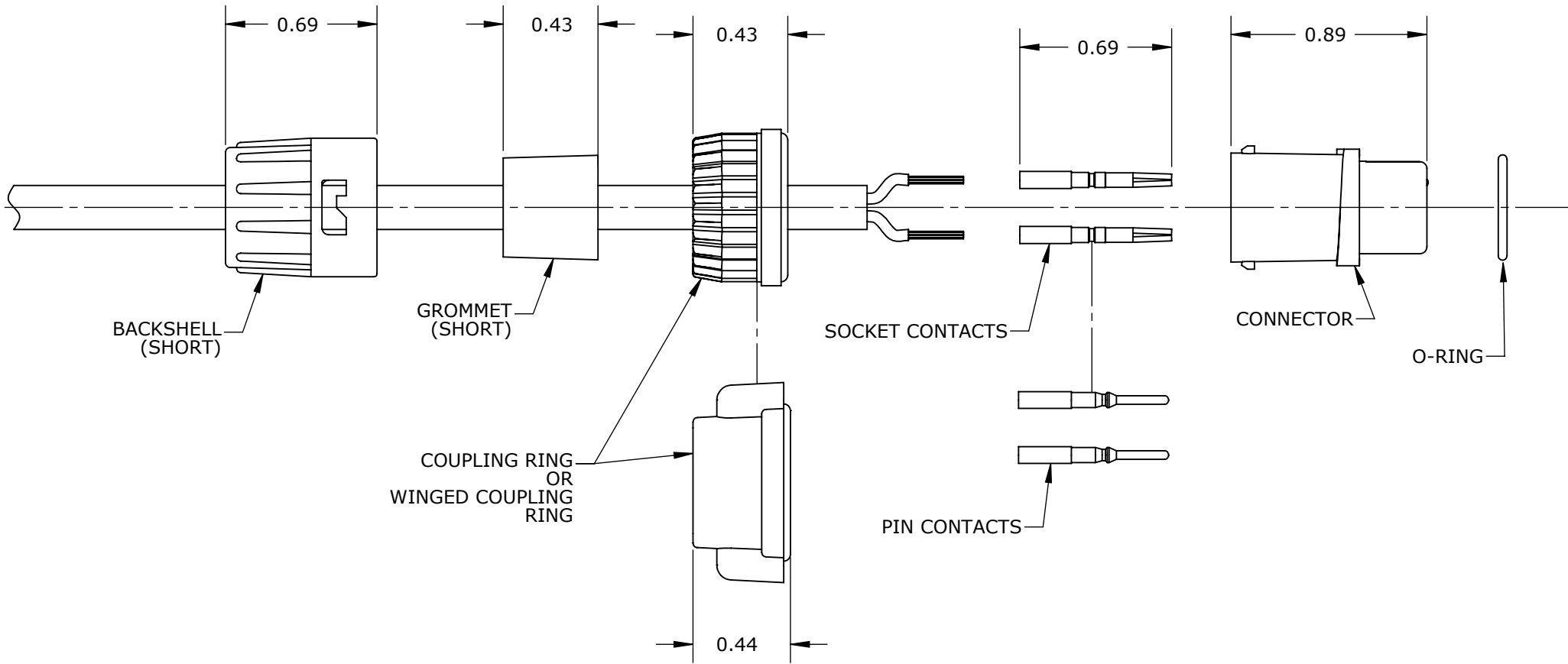
Address: A1208, Overseas Decoration Building, #122 Zhenhua RD., Futian, Shenzhen, China



INSTRUCTION SHEET

MINI-CON-X SERIES

CABLE CONNECTOR ASSEMBLY



RECOMMENDED STRIPPING LENGTH

NOTES:
1. ALL DIMENSIONS ARE FOR REFERENCE ONLY.

A	BZ	04-21-09	DRAWING CREATED PER DOR 09-1367KL
REV.	INIT.	DATE	DESCRIPTION
CHECKED BY:			
APPROVED BY:			
FILE:	LAB-0012	SHEET	1 OF 3

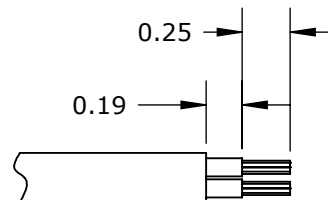
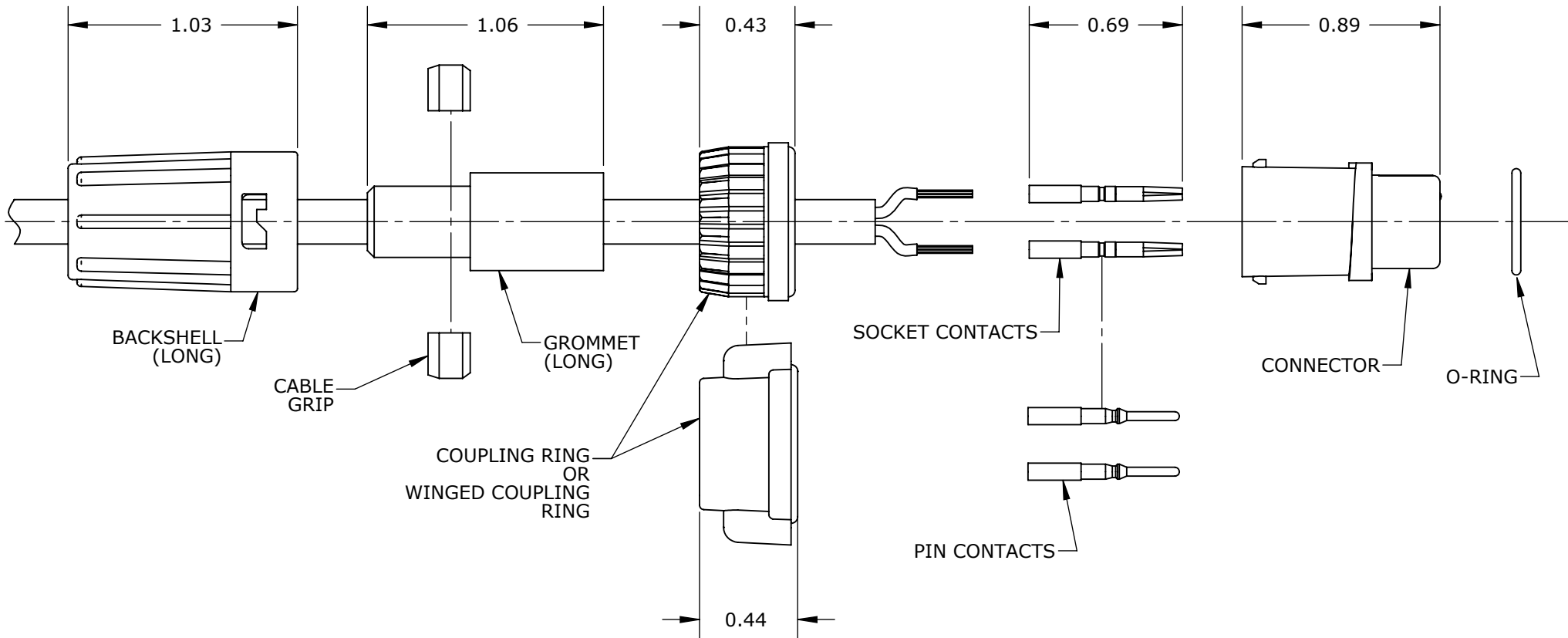
CONXALL

601 E. WILDWOOD VILLA PARK, IL 60181

INSTRUCTION SHEET


MINI-CON-X SERIES

CABLE CONNECTOR ASSEMBLY



RECOMMENDED STRIPPING LENGTH

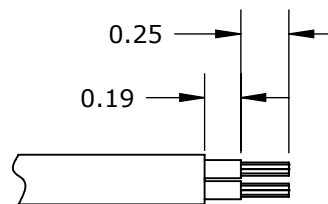
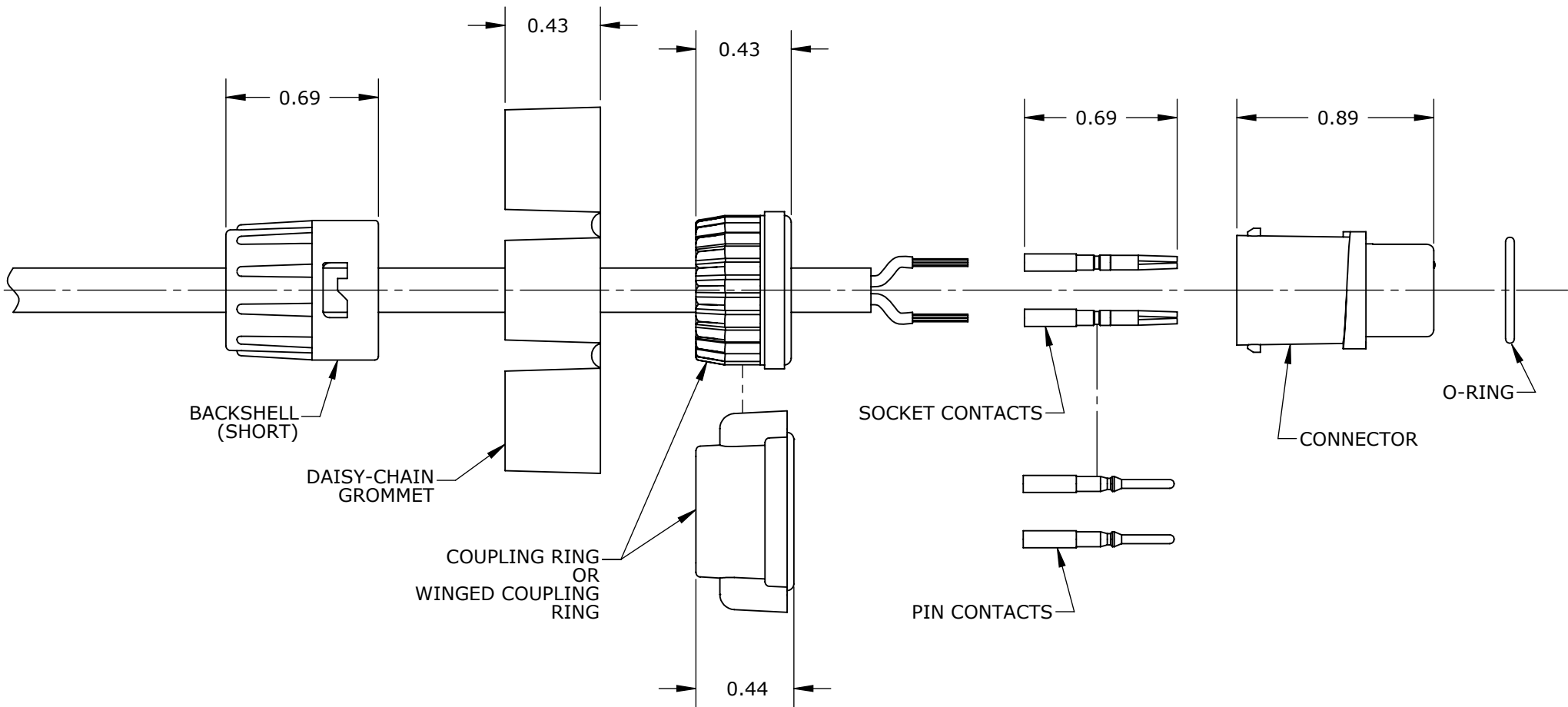
NOTES:
1. ALL DIMENSIONS ARE FOR REFERENCE ONLY.

A	BZ	04-21-09	DRAWING CREATED PER DOR 09-1367KL
REV.	INIT.	DATE	DESCRIPTION
CHECKED BY:			 601 E. WILDWOOD VILLA PARK, IL 60181
APPROVED BY:			
FILE:	LAB-0012	SHEET 2 OF 3	

INSTRUCTION SHEET


MINI-CON-X SERIES

CABLE CONNECTOR ASSEMBLY



RECOMMENDED STRIPPING LENGTH

NOTES:
1. ALL DIMENSIONS ARE FOR REFERENCE ONLY.

A	BZ	04-21-09	DRAWING CREATED PER DOR 09-1367KL
REV.	INIT.	DATE	DESCRIPTION
CHECKED BY:			 601 E. WILDWOOD VILLA PARK, IL 60181
APPROVED BY:			
FILE:	LAB-0012	SHEET 3 OF 3	