



Chipsmall Limited consists of a professional team with an average of over 10 year of expertise in the distribution of electronic components. Based in Hongkong, we have already established firm and mutual-benefit business relationships with customers from,Europe,America and south Asia,supplying obsolete and hard-to-find components to meet their specific needs.

With the principle of “Quality Parts,Customers Priority,Honest Operation,and Considerate Service”,our business mainly focus on the distribution of electronic components. Line cards we deal with include Microchip,ALPS,ROHM,Xilinx,Pulse,ON,Everlight and Freescale. Main products comprise IC,Modules,Potentiometer,IC Socket,Relay,Connector.Our parts cover such applications as commercial,industrial, and automotives areas.

We are looking forward to setting up business relationship with you and hope to provide you with the best service and solution. Let us make a better world for our industry!



## Contact us

Tel: +86-755-8981 8866 Fax: +86-755-8427 6832

Email & Skype: info@chipsmall.com Web: www.chipsmall.com

Address: A1208, Overseas Decoration Building, #122 Zhenhua RD., Futian, Shenzhen, China

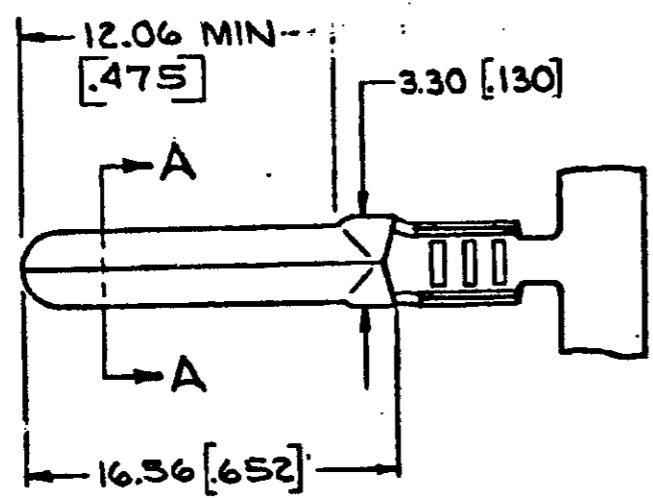


DRAWING MADE IN THIRD ANGLE PROJECTION

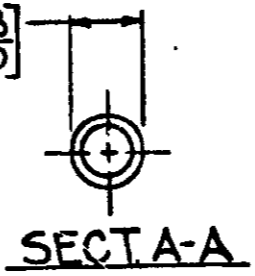
© COPYRIGHT 1978 BY AMP INCORPORATED, HARRISBURG, PA.  
ALL INTERNATIONAL RIGHTS RESERVED. AMP INCORPORATED PRODUCTS  
COVERED BY U. S. AND FOREIGN PATENTS AND/OR PATENTS PENDING.

LOC AF DIST 5C

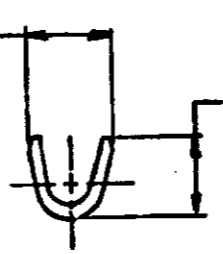
REVISIONS				
ZONE	LTR	DESCRIPTION	DATE	APPROVED
✓	A	REVISED & RELEASED	12-1-78	WSD/DA
✓	B	ADDED 62820-2	6-4-80	RLS/GY
✓	C	REVISED AF-2156	11/13/80	JR/GY
✓	D	OBS-2 AF-4796	9/2/81	GY
✓	E	OBS-1 PER AF-4175	5-20-88	TMS/ST
✓	F	REACT-1 AF-6168	6/8/89	PMF/GY
✓	G	OBSLETE-1 PER DLIO-0217-96	09/20/96	PMF/GY
✓	H	REACTIVATE-1 PER DLIO-0253-96	09/JAN/97	PMF
✓	J	ADDED-3 PER 063A-0289-00	11 MAY 00	MSF/DFD



2.36 [.093]  
2.29 [.090]



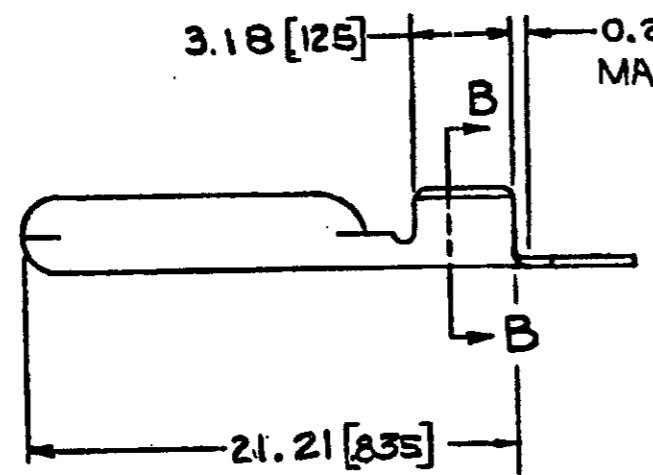
3.30 [.130]  
2.67 [.105]



2.92 [.115]

**NOTE:**  
1. DIMS. IN BRACKETS ARE IN INCHES.  
2. CONTINUOUS STRIP ON REELS.  
3. PRELIMINARY - NOT FOR PRODUCTION.

3.18 [.125] 0.25 [.010] MAX CUT-OFF



REMARKS	WIRE RANGE	PART NO
—	0.4-1.4mm <sup>2</sup> [22-16]	62820-3
OBSOLETE REVERSE REEL	0.4-1.4mm <sup>2</sup> [22-16]	<del>62820-2</del>
—	0.4-1.4mm <sup>2</sup> [22-16]	62820-1

UNLESS OTHERWISE SPECIFIED DIMENSIONS ARE IN MILLIMETERS. TOLERANCES ON: DECIMALS ANGLES ±0.38 [0.15]	CONTRACT NO	AMP INCORPORATED Harrisburg, Pa.		
	DR <i>Deane J. Davis</i> 9-14-78	NAME		
	CHK <i>G. W. Miller</i> 7-15-78	.093 DIA. PIN		
	APPD <i>Jim Prater</i> 7-15-78	SIZE	CODE IDENT NO	DRAWING NO
MATERIAL 0.32 [.0126] THK DRASS	DESIGN APPD	B	00779	62820
FINISH PRE-TIN	OTHER APPD	SCALE		SHEET

**METRIC**