



Chipsmall Limited consists of a professional team with an average of over 10 year of expertise in the distribution of electronic components. Based in Hongkong, we have already established firm and mutual-benefit business relationships with customers from,Europe,America and south Asia,supplying obsolete and hard-to-find components to meet their specific needs.

With the principle of “Quality Parts,Customers Priority,Honest Operation,and Considerate Service”,our business mainly focus on the distribution of electronic components. Line cards we deal with include Microchip,ALPS,ROHM,Xilinx,Pulse,ON,Everlight and Freescale. Main products comprise IC,Modules,Potentiometer,IC Socket,Relay,Connector.Our parts cover such applications as commercial,industrial, and automotives areas.

We are looking forward to setting up business relationship with you and hope to provide you with the best service and solution. Let us make a better world for our industry!



Contact us

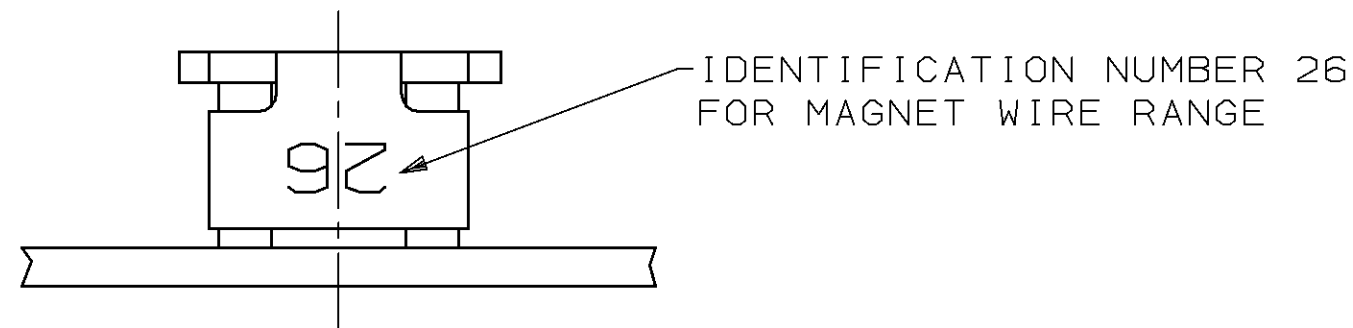
Tel: +86-755-8981 8866 Fax: +86-755-8427 6832

Email & Skype: info@chipsmall.com Web: www.chipsmall.com

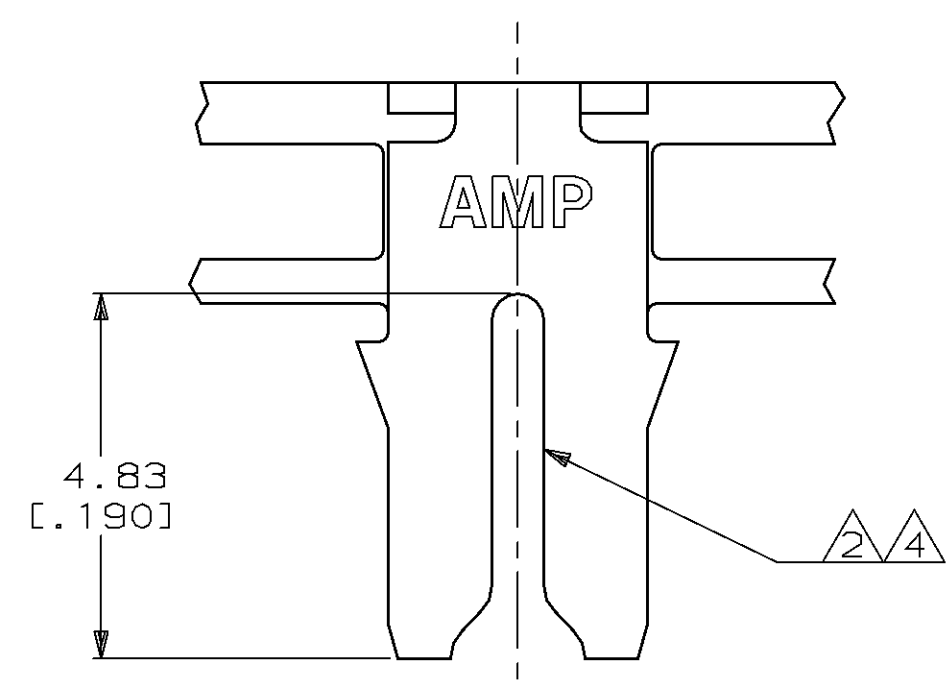
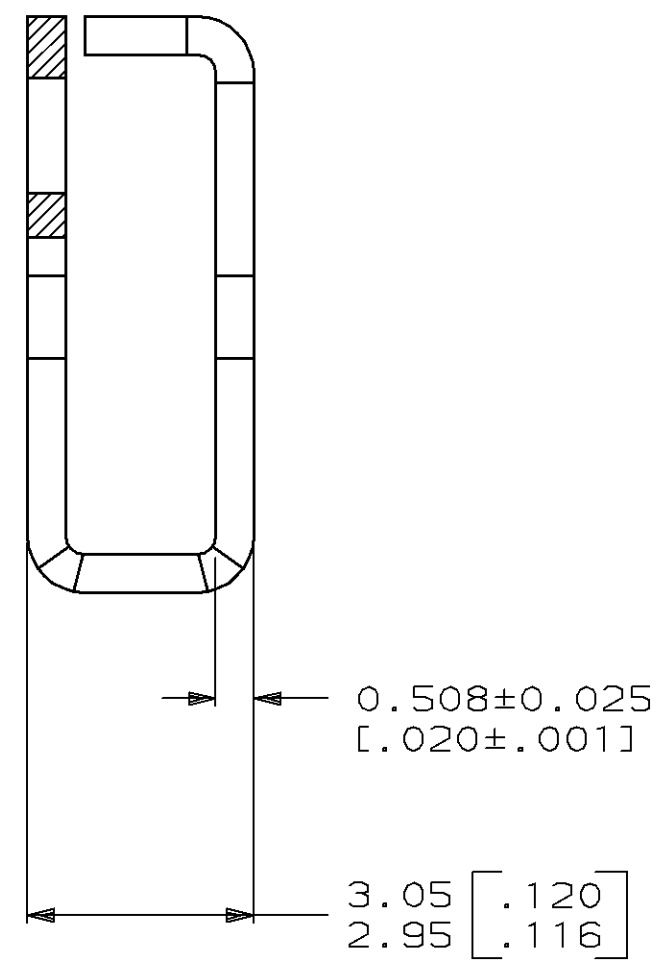
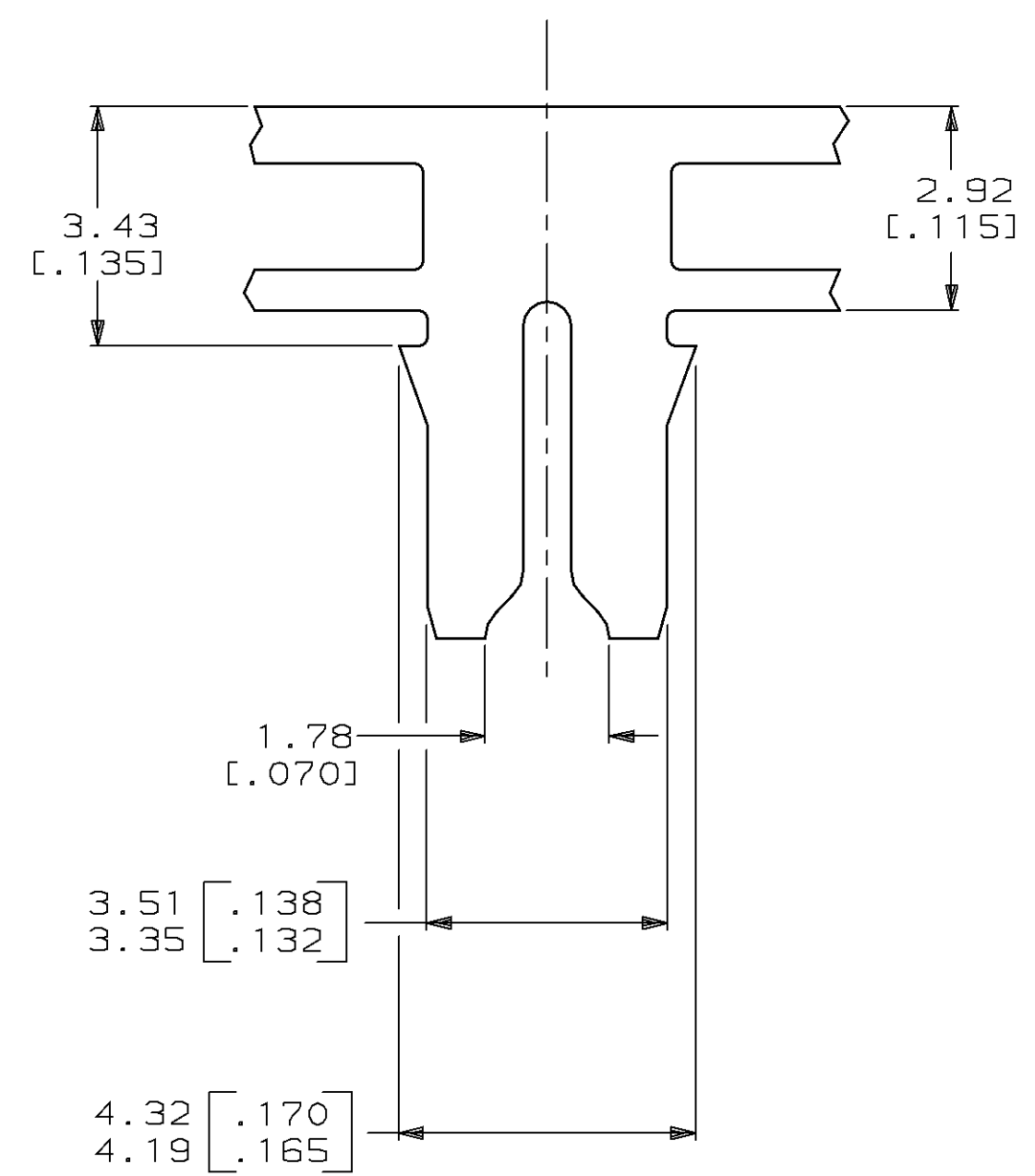
Address: A1208, Overseas Decoration Building, #122 Zhenhua RD., Futian, Shenzhen, China



LOC		DIST		REVISIONS				DATE	APPD
AF	50	P	F	ZONE	LTR	DESCRIPTION			
					C	RELEASED PER P.R. 92-61	9/4/92	MF/NN	



- 1 CONTINUOUS STRIP ON REELS WITH TERMINALS LOCATED ON 8.38 [.330] CENTERS.
- 2 SLOTTED TERMINAL TERMINATES A SINGLE 0.81-1.02mm [#20-#18] AWG BARE SOLID COPPER WIRE.
- 3 AFTER INSERTION INTO PLASTIC HOLDER TAB PORTION MUST BE BENT OVER 45° TO 90° OR POTTED-IN TO PREVENT PULL-OUT WHEN MATING RECEPTACLE IS DISCONNECTED.
- 4 SLOTTED TERMINAL ALSO TERMINATES A SINGLE 0.81mm [#20] AWG OR A 0.81 [.032] DIA COPPER CLAD STEEL WIRE PER ASTM B452-67 CLASS 40 A.



PROPOSED DESIGN
 NOT RELEASED FOR
 PRODUCTION

THIS DRAWING IS A CONTROLLED DOCUMENT FOR AMP INCORPORATED. IT IS SUBJECT TO CHANGE AND THE CONTROLLING ENGINEERING ORGANIZATION SHOULD BE CONTACTED FOR THE LATEST REVISION.

DO NOT SCALE PRINT. UNLESS SPECIFIED DIMENSIONS IN mm [INCHES] TOLERANCES ON:		DR 8/6/93 MICHAEL S. FEHER		AMP Incorporated Harrisburg, PA 17105-3608	
2 PLC DEC ± 0.25 [.010]		CHK - LORI A. MAYER			
3 PLC DEC ± -		APPD - NELSON E. NEFF		NAME	
ANGLES ± -		APPD - TERRY L. SHUTTER		TERMINAL, SPLICE, MAG-MATE™	
MATERIAL 4M BRASS		PRODUCT SPEC 108-2012			
FINISH 0.002032 [.000080] MIN TIN PER MIL-T-10727		APPLICATION SPEC 114-2046		SIZE C	CAGE CODE 00779
		WEIGHT -		DRAWING NO C-62903	
		SCALE 10:1		SHEET	1 OF 1

62903-1
 PART NO