



Chipsmall Limited consists of a professional team with an average of over 10 year of expertise in the distribution of electronic components. Based in Hongkong, we have already established firm and mutual-benefit business relationships with customers from,Europe,America and south Asia,supplying obsolete and hard-to-find components to meet their specific needs.

With the principle of “Quality Parts,Customers Priority,Honest Operation,and Considerate Service”,our business mainly focus on the distribution of electronic components. Line cards we deal with include Microchip,ALPS,ROHM,Xilinx,Pulse,ON,Everlight and Freescale. Main products comprise IC,Modules,Potentiometer,IC Socket,Relay,Connector.Our parts cover such applications as commercial,industrial, and automotives areas.

We are looking forward to setting up business relationship with you and hope to provide you with the best service and solution. Let us make a better world for our industry!



Contact us

Tel: +86-755-8981 8866 Fax: +86-755-8427 6832

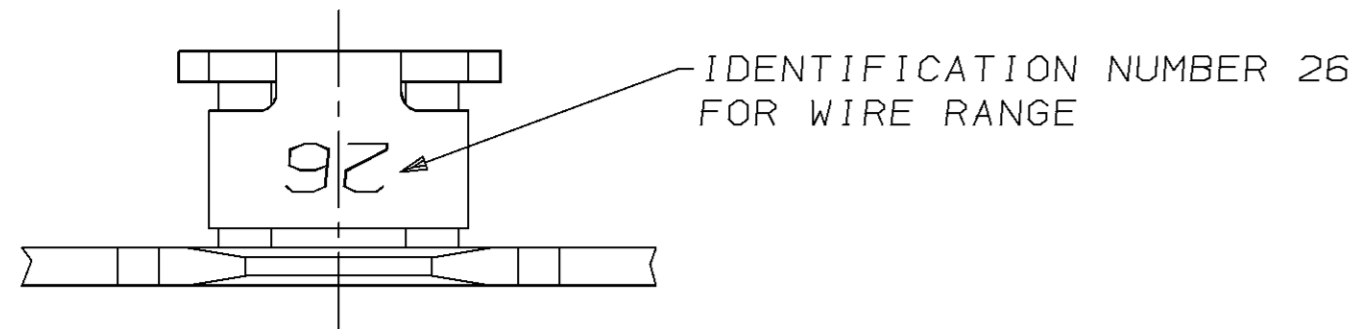
Email & Skype: info@chipsmall.com Web: www.chipsmall.com

Address: A1208, Overseas Decoration Building, #122 Zhenhua RD., Futian, Shenzhen, China

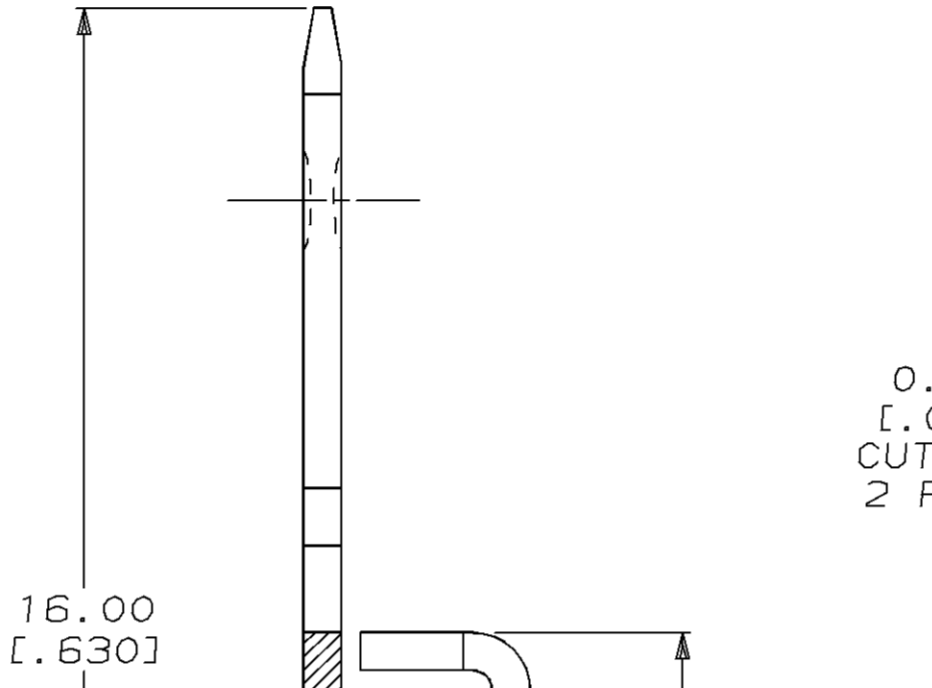
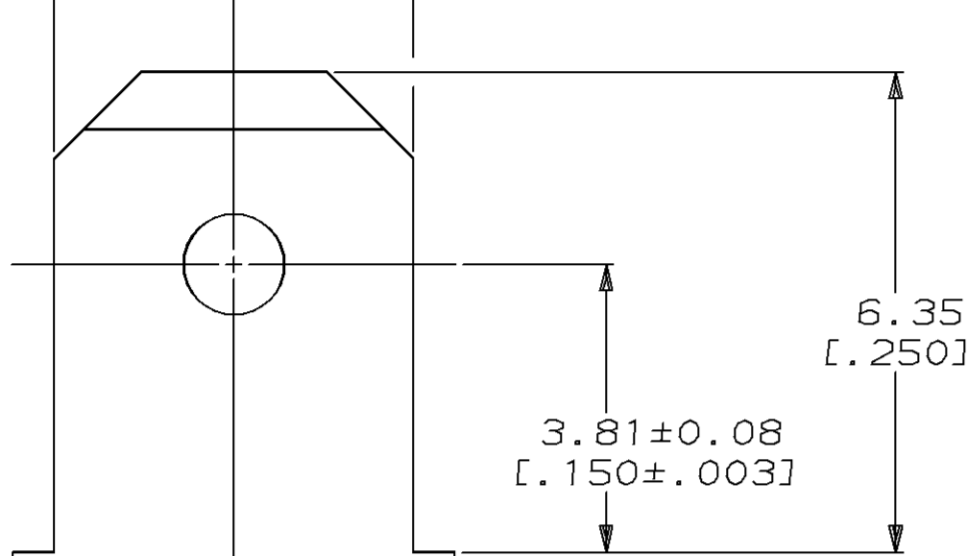


LOC	DIST	P	F	ZONE	LTR	REVISIONS	DATE	APPD	
AF	50					D	REVISED AND REDRAWN PER 0710-0086-96	18MAR96	MF/NN

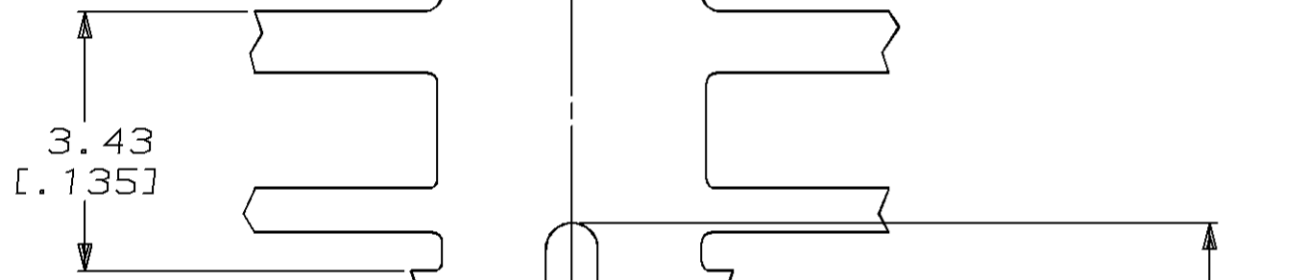
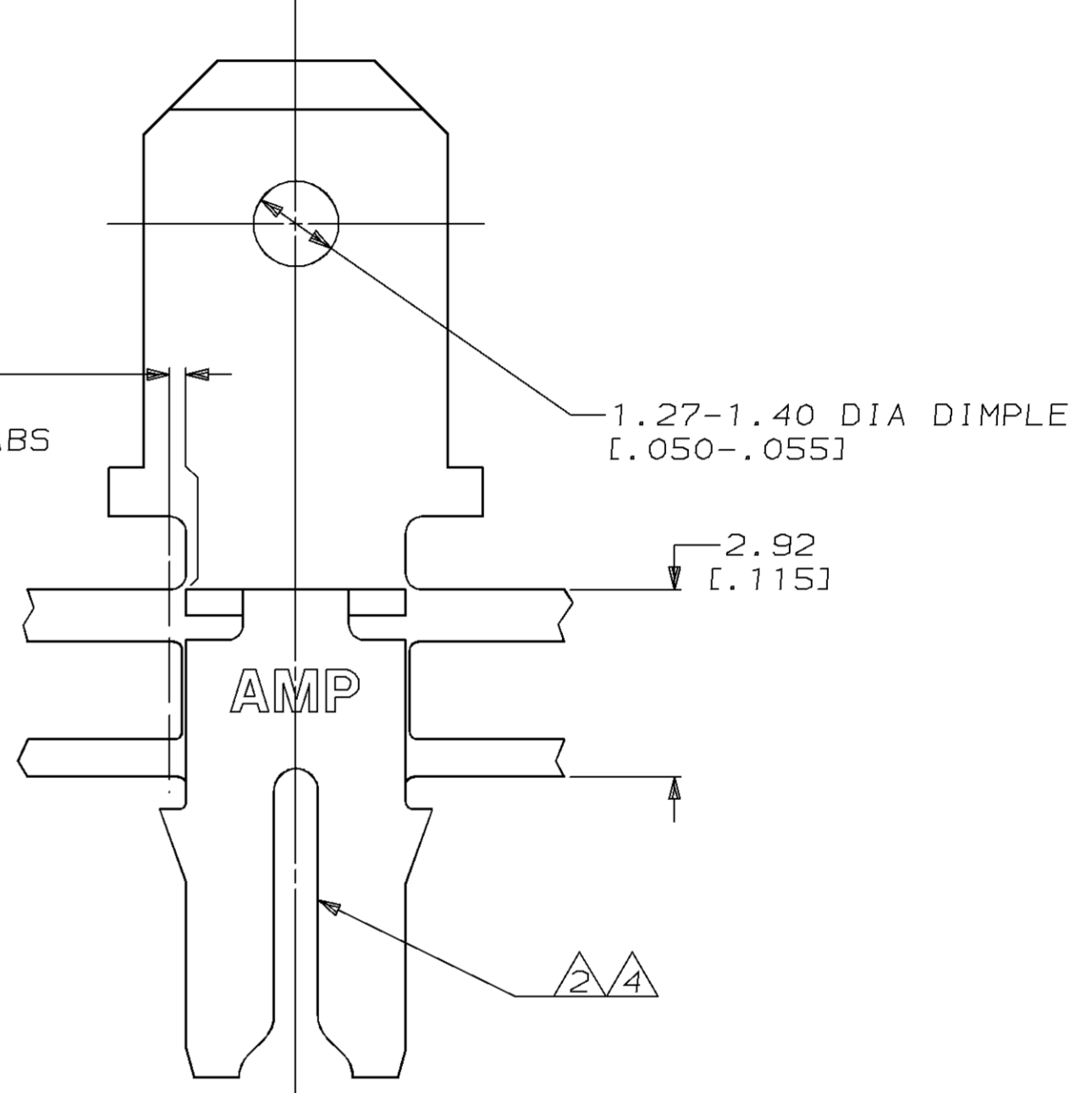
- 1 CONTINUOUS STRIP ON REELS WITH TERMINALS LOCATED ON 8.38±0.08 [.330±.003] CENTERS.
- 2 SLOT TERMINATES A SINGLE 0.81-1.02mm [#20-#18] AWG BARE SOLID COPPER WIRE.
- 3 AFTER INSERTION INTO PLASTIC HOLDER TAB PORTION MUST BE BENT OVER 45° TO 90° OR POTTED-IN TO PREVENT PULL-OUT WHEN MATING RECEPTACLE IS DISCONNECTED.
- 4 SLOT ALSO TERMINATES A SINGLE 0.81mm [#20] AWG OR A 0.81 [.032] DIA COPPER CLAD STEEL WIRE PER ASTM B452-67 CLASS 40 A.



4.83 [.190]
4.72 [.186]



0.25 MAX [.010]
CUT-OFF TABS
2 PLACES



7.87 [.310]
7.49 [.295]

1.78 [.070]

0.508±0.025 [.020±.001]

3.51 [.138]
3.35 [.132]

3.05 [.120]
2.95 [.116]

4.32 [.170]
4.19 [.165]

62904-1

PART NO

DO NOT SCALE PRINT. UNLESS SPECIFIED DIMENSIONS IN mm [INCHES] TOLERANCES ON: 2 PLC DEC ± 0.25 [.010] 3 PLC DEC ± - ANGLES ± -	DR 18/MAR/96 MICHAEL S. FEHER	AMP Incorporated Harrisburg, PA 17105-3608
	CHK 22/MAR/96 RICHARD GRZYBOWSKI	
APPD 22/MAR/96 NELSON E. NEFF	NAME	
APPD 22/MAR/96 RICK OSKOWIS	TERMINAL, TAB, 4.75 [.187] FASTON™ MAG-MATE™	
MATERIAL 4M BRASS	PRODUCT SPEC 108-2012	SIZE
FINISH 0.002032 [.000080] MIN TIN PER MIL-T-10727	APPLICATION SPEC 114-2046	CAGE CODE 00779
	WEIGHT -	DRAWING NO G=62904
		SCALE 10:1

THIS DRAWING IS A CONTROLLED DOCUMENT FOR AMP INCORPORATED. IT IS SUBJECT TO CHANGE AND THE CONTROLLING ENGINEERING ORGANIZATION SHOULD BE CONTACTED FOR THE LATEST REVISION.

SHEET 1 OF 1

CUSTOMER DRAWING