



Chipsmall Limited consists of a professional team with an average of over 10 year of expertise in the distribution of electronic components. Based in Hongkong, we have already established firm and mutual-benefit business relationships with customers from,Europe,America and south Asia,supplying obsolete and hard-to-find components to meet their specific needs.

With the principle of “Quality Parts,Customers Priority,Honest Operation,and Considerate Service”,our business mainly focus on the distribution of electronic components. Line cards we deal with include Microchip,ALPS,ROHM,Xilinx,Pulse,ON,Everlight and Freescale. Main products comprise IC,Modules,Potentiometer,IC Socket,Relay,Connector.Our parts cover such applications as commercial,industrial, and automotives areas.

We are looking forward to setting up business relationship with you and hope to provide you with the best service and solution. Let us make a better world for our industry!



Contact us

Tel: +86-755-8981 8866 Fax: +86-755-8427 6832

Email & Skype: info@chipsmall.com Web: www.chipsmall.com

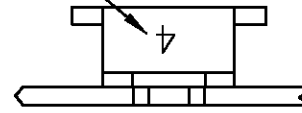
Address: A1208, Overseas Decoration Building, #122 Zhenhua RD., Futian, Shenzhen, China



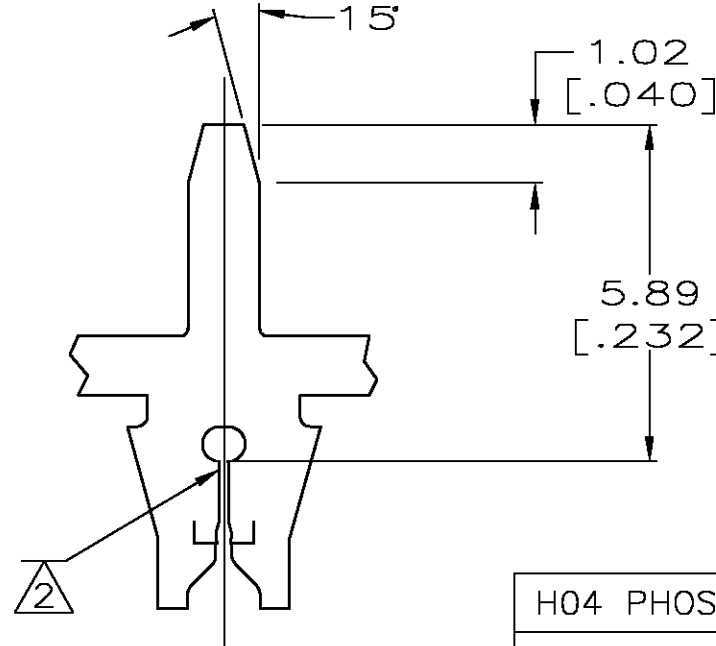
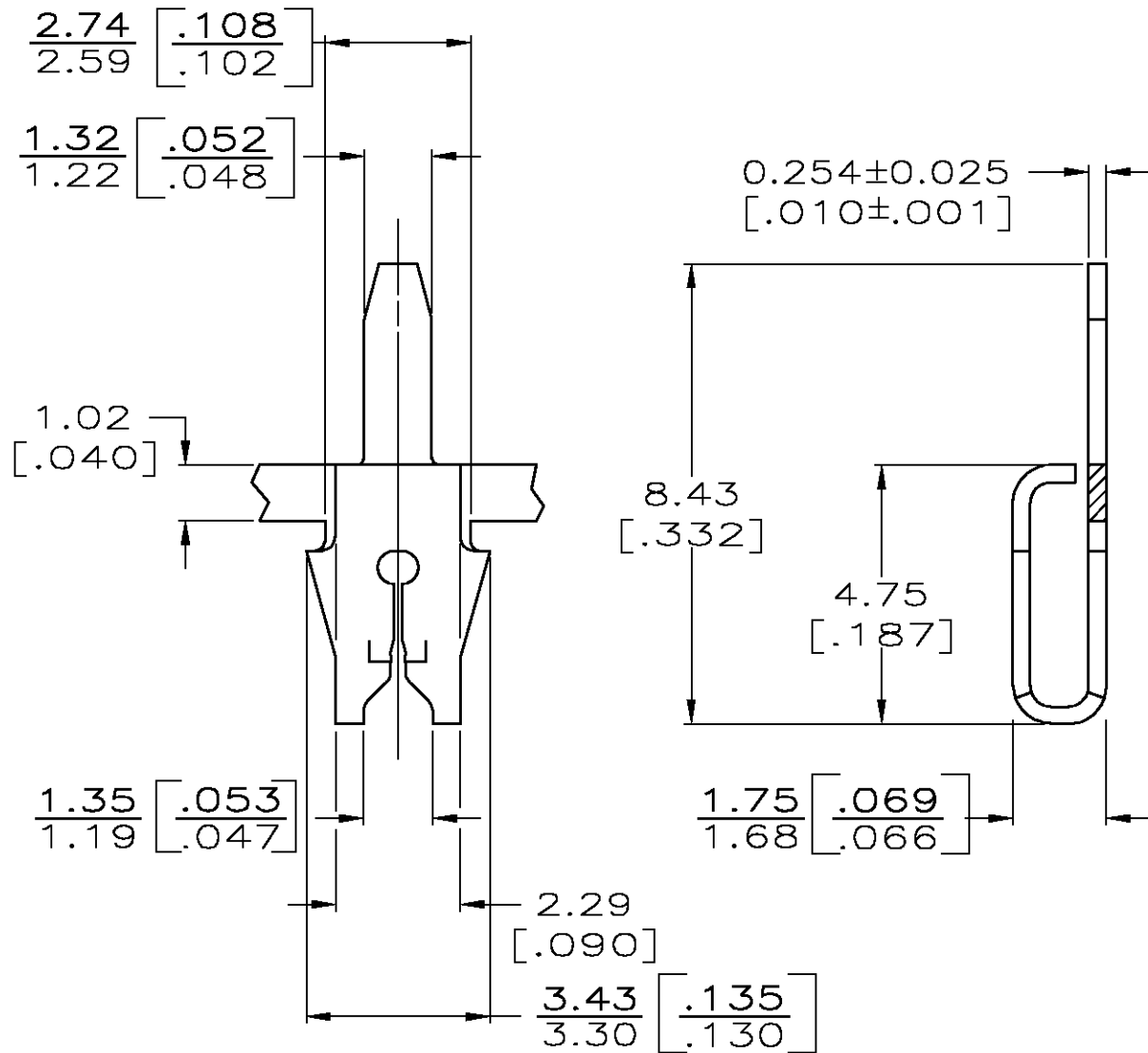
THIS DRAWING IS UNPUBLISHED. RELEASED FOR PUBLICATION
 © COPYRIGHT BY TYCO ELECTRONICS CORPORATION. ALL RIGHTS RESERVED.

LOC	DIST	REVISIONS			
P	LTR	DESCRIPTION	DATE	DWN	APVD
AF	50	G	REVISED PER 0G3A-0057-03	24JAN03	MF KR

IDENTIFICATION NUMBER 4 FOR MAGNET WIRE RANGE



- 1 CONTINUOUS STRIP ON REELS WITH TERMINALS LOCATED ON 5.08±0.08 [.200±.003] CENTERS.
- 2 SLOT ACCEPTS 0.18-0.23mm DIA [#33-#31]AWG COPPER MAGNET WIRE
- 3 0.002032[.000080] MIN TIN OVER 0.00127[.000050] MIN NICKEL
- 4 REELED FOR APPLICATION THROUGH MAG-MATE INSERTION MACHINE.
- 5 REELED FOR INSERTION INTO PRINTED CIRCUIT BOARD.
- 6 PRELIMINARY - NOT FOR PRODUCTION.



H04 PHOSPHOR BRONZE	4	6	62938-3
H04 BRASS		5	62938-2
H04 BRASS	4		62938-1
MATERIAL	REELING	PART NUMBER	

THIS DRAWING IS A CONTROLLED DOCUMENT.

DWN	24JAN2003	tyco Electronics	Tyco Electronics Corporation	
CHK	24JAN2003		Harrisburg, PA 17105-3608	
APVD	24JAN2003	NAME	KURT A. RANDOLPH	
PRODUCT SPEC		108-2012		
APPLICATION SPEC		114-2069		
WEIGHT		SIZE	CAGE CODE	DRAWING NO
		A3	00779	62938
CUSTOMER DRAWING		SCALE	SHEET	REV
		8:1	1 OF 1	G

DIMENSIONS:	TOLERANCES UNLESS OTHERWISE SPECIFIED:
INCHES	
	0 PLC ± -
	1 PLC ± -
	2 PLC ± 0.25 [.010]
	3 PLC ± -
	4 PLC ± -
ANGLES	± -
MATERIAL	FINISH
SEE TABLE	- 3