



Chipsmall Limited consists of a professional team with an average of over 10 year of expertise in the distribution of electronic components. Based in Hongkong, we have already established firm and mutual-benefit business relationships with customers from,Europe,America and south Asia,supplying obsolete and hard-to-find components to meet their specific needs.

With the principle of "Quality Parts,Customers Priority,Honest Operation,and Considerate Service",our business mainly focus on the distribution of electronic components. Line cards we deal with include Microchip,ALPS,ROHM,Xilinx,Pulse,ON,Everlight and Freescale. Main products comprise IC,Modules,Potentiometer,IC Socket,Relay,Connector.Our parts cover such applications as commercial,industrial, and automotives areas.

We are looking forward to setting up business relationship with you and hope to provide you with the best service and solution. Let us make a better world for our industry!



## Contact us

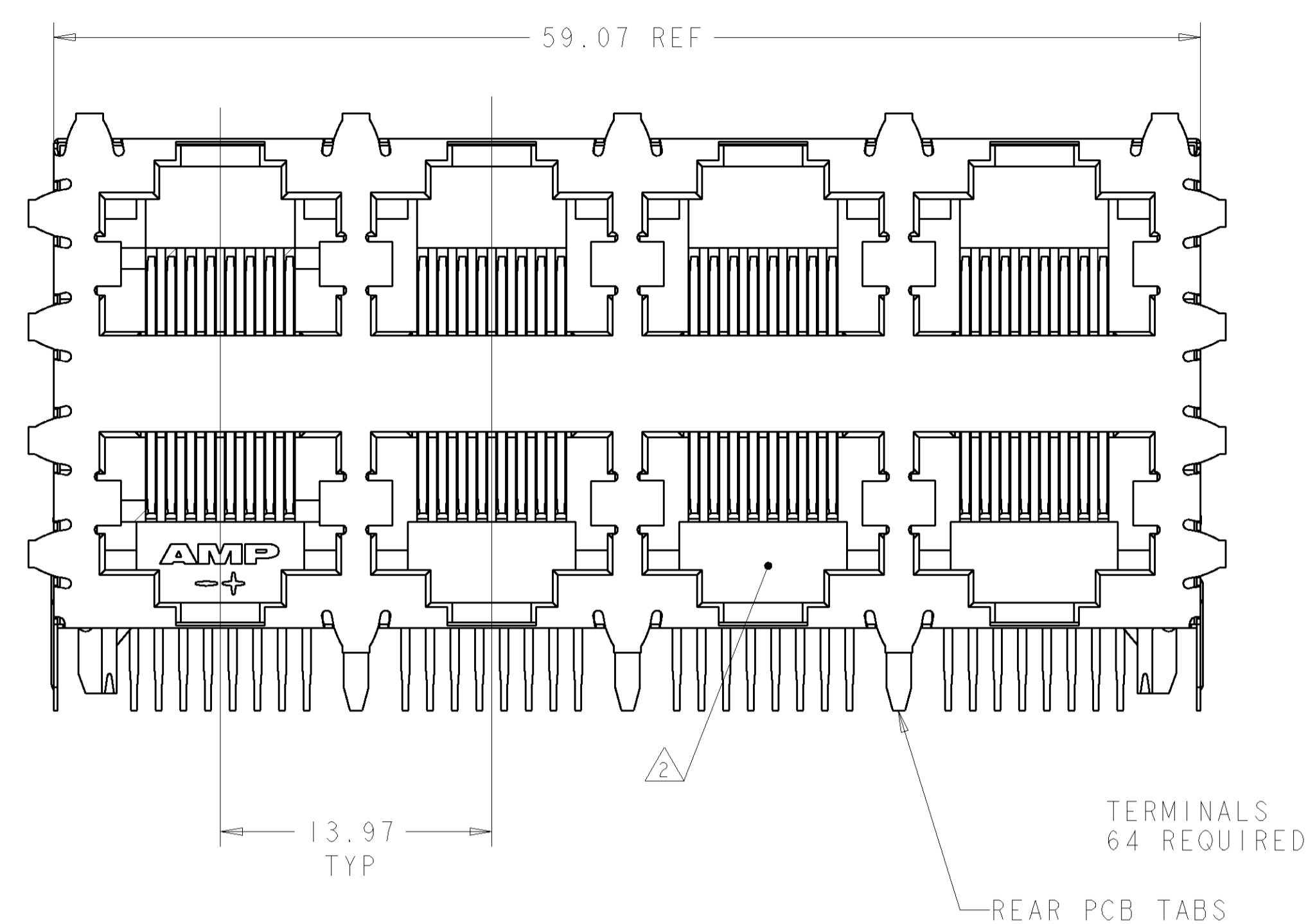
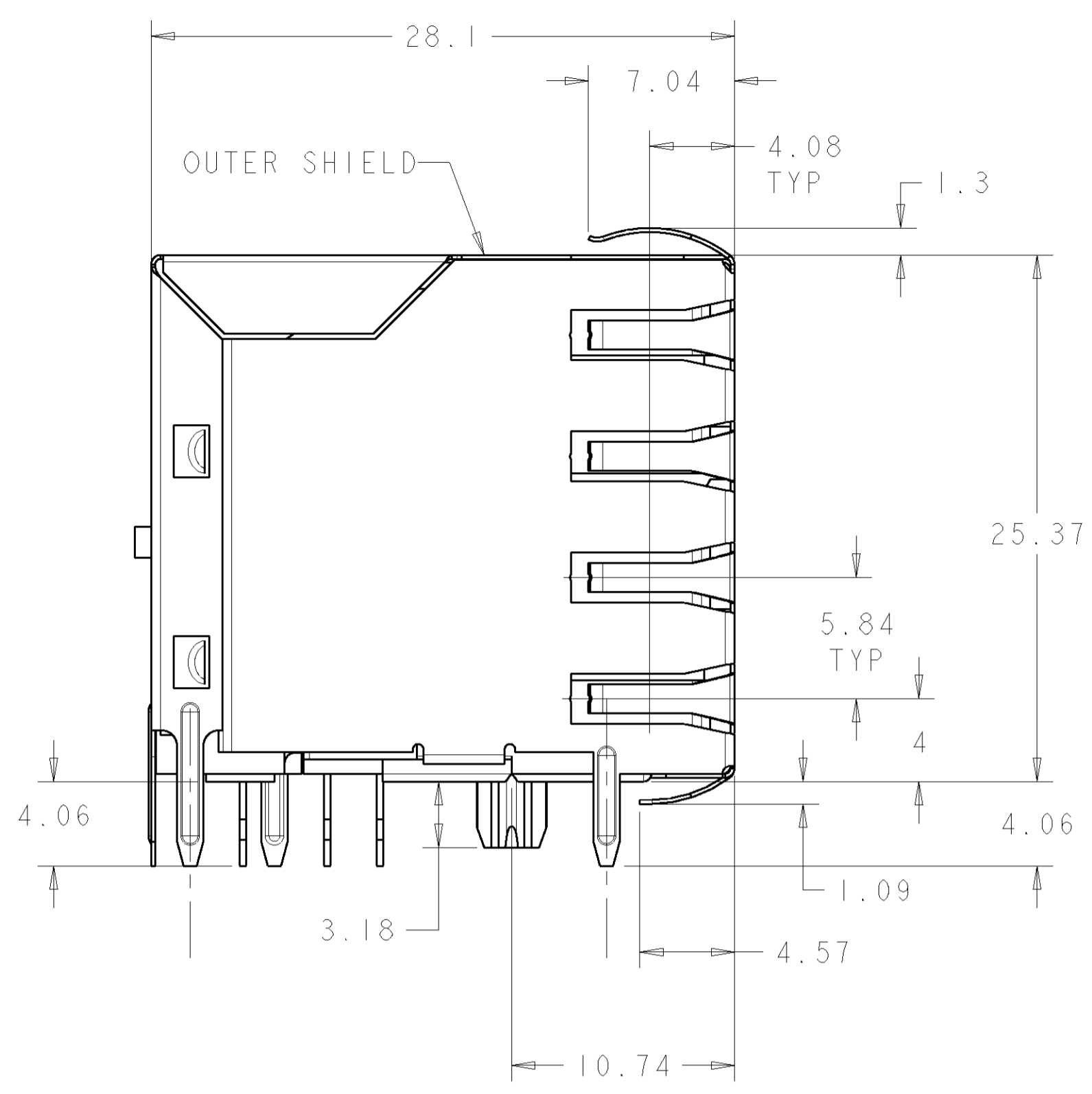
Tel: +86-755-8981 8866 Fax: +86-755-8427 6832

Email & Skype: info@chipsmall.com Web: www.chipsmall.com

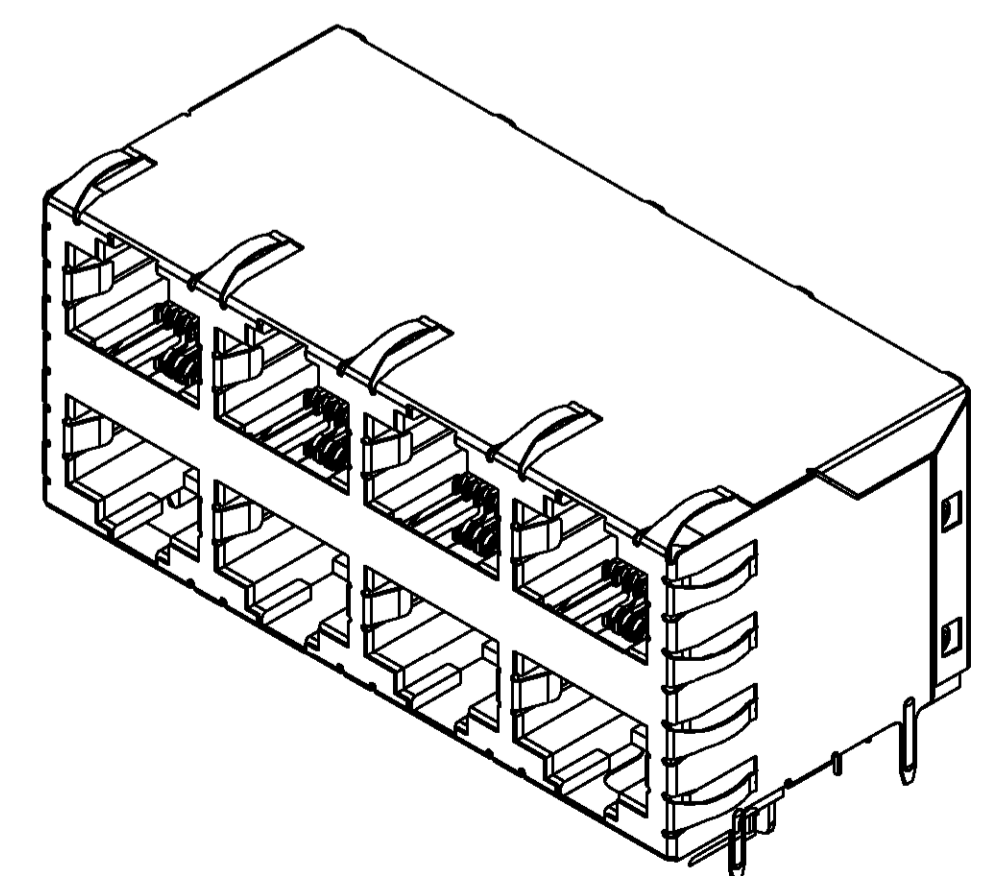
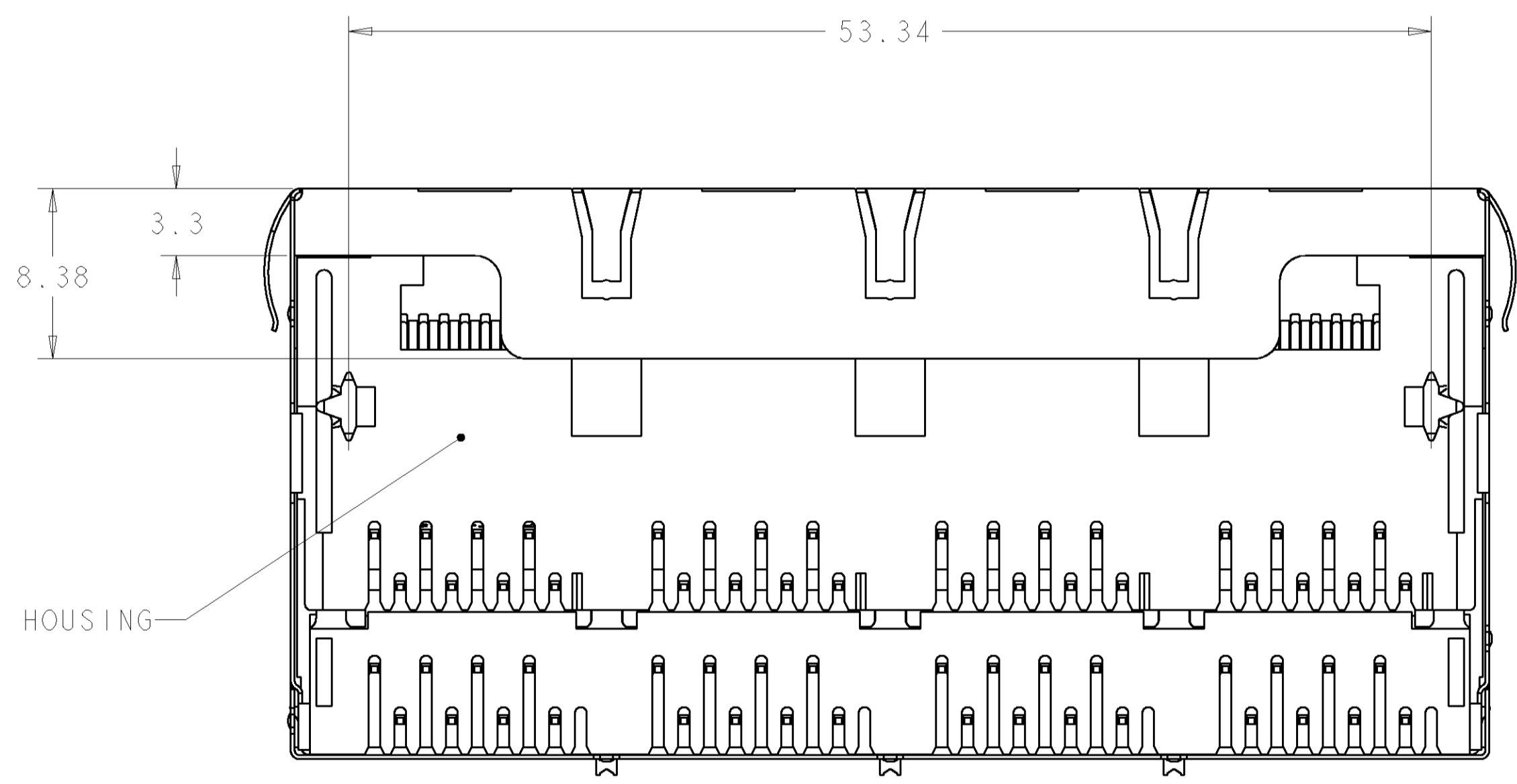
Address: A1208, Overseas Decoration Building, #122 Zhenhua RD., Futian, Shenzhen, China



LOC	DIST	REVISIONS			
P	LTR	DESCRIPTION	DATE	DWN	APVD
A		REV PER EC 0511-0201-04	23JUN2005	LV	SF
B		REV PER ECO-07-004583	02MAR2007	RG	JW



- 1 HOUSING: PCT POLYESTER, BLACK, UL 94V-0. TERMINALS: 0.305 THICK PHOS BRONZE PLATED WITH 1.27µm MINIMUM THICK HARD GOLD IN LOCALIZED AREA AND 2.03µm MINIMUM THICK MATTE TIN IN SOLDER AREA OVER 1.27µm MINIMUM THICK NICKEL UNDERPLATE. SHIELD: 0.196 THICK COPPER ALLOY PLATED WITH 1.27µm MINIMUM NICKEL AND 2.03µm MINIMUM HOT TIN DIP ON PCB GROUND TABS.
- 2 JACK CAVITY CONFORMS TO FCC RULES AND REGULATIONS, PART 68 SUBPART F
- 3 PCB HOLES ONLY REQUIRED FOR 6339168-1
- 4 USE #30 DRILL BIT OR 3.25mm DRILL BIT WHEN PRODUCING THESE PCB HOLES
- 5. RECOMMENDED APPLICATIONS: FAST ETHERNET, 10 BASE-T ETHERNET, AND 10/100 BASE-T ETHERNET (CAT 5 TWO PAIR 1/2, 3/6)

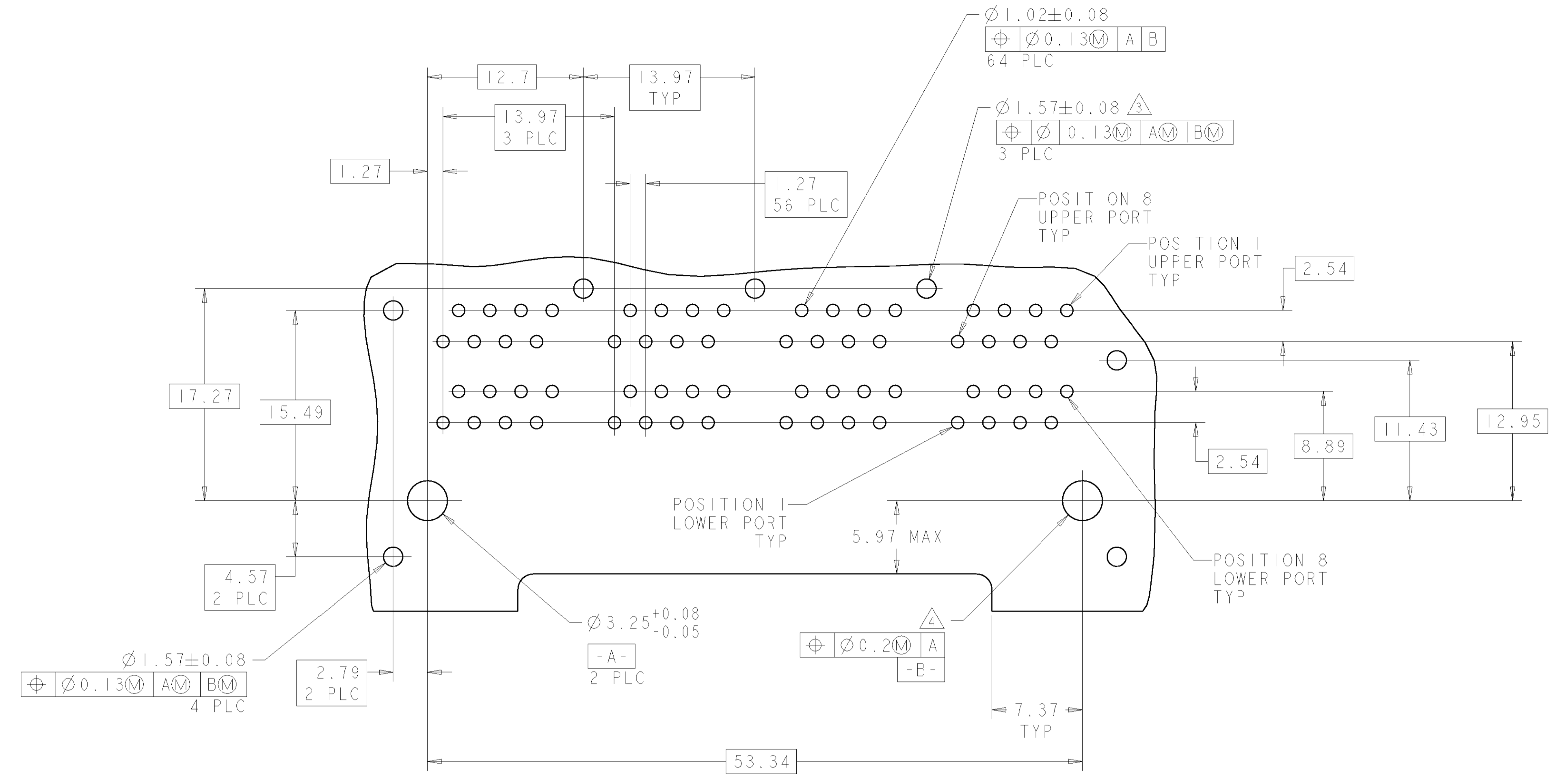


SCALE 2:1

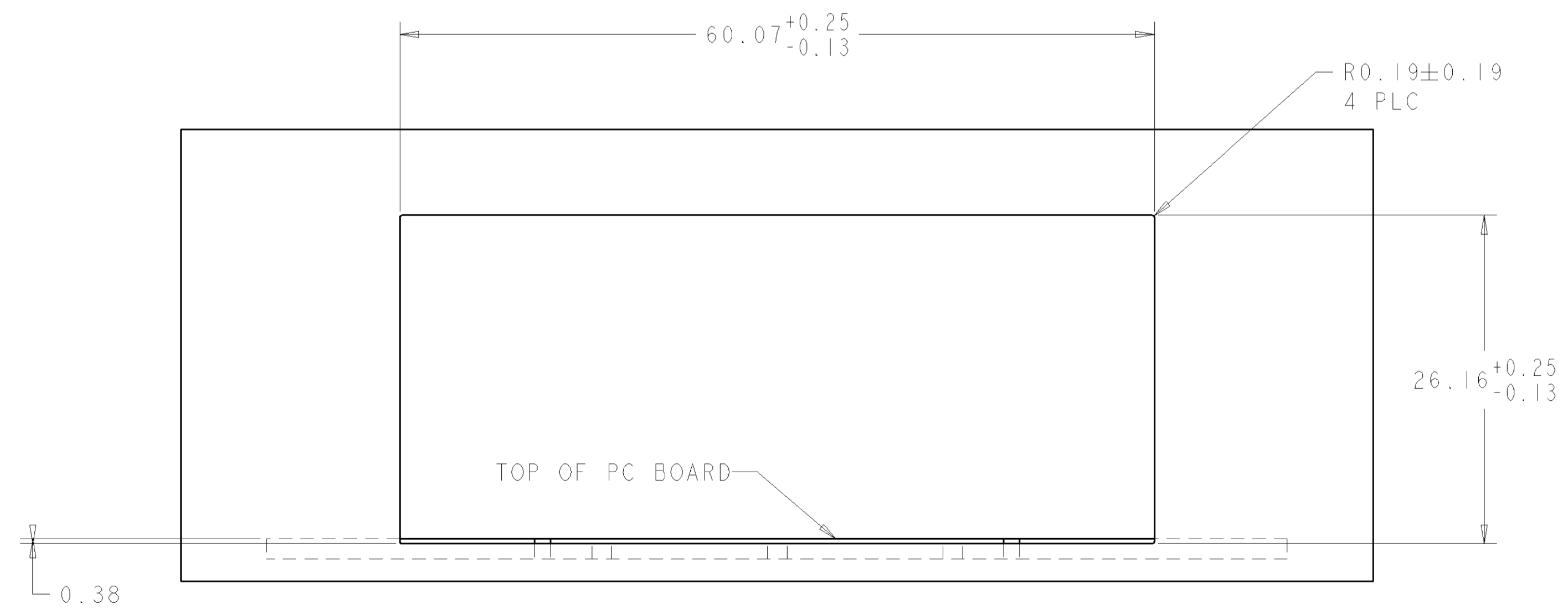
NONE	6339168-2
3	6339168-1
REAR PCB TABS	PART NO.

<small>THE DIMENSIONS TO DIMENSIONED SURFACES UNLESS OTHERWISE SPECIFIED ARE TO THE UNFINISHED SURFACE UNLESS OTHERWISE SPECIFIED.</small>		DWN: L. VARELA - 23JUN2005 CHK: J. WESTMAN - 23JUN2005 APVD: S. FLICKINGER - 23JUN2005		<b>tyco</b> Tyco Electronics Harrisburg, PA 17105-3608	
DIMENSIONS: mm 		TOLERANCES UNLESS OTHERWISE SPECIFIED: 0 PLC ±.25 1 PLC ±.25 2 PLC ±.25 3 PLC ±.25 4 PLC ±.25 ANGLES ±.5		NAME: ASSEMBLY, STACKED JACK, 2X4, 8 POSITION, SHIELDED, WAVE PANEL GROUND PRODUCT SPEC: 108-1163-9 APPLICATION SPEC: 114-2048 SIZE: A   00779   C=6339168 WEIGHT: - FINISH: - CUSTOMER DRAWING	
MATERIAL: - FINISH: -		WEIGHT: - FINISH: - CUSTOMER DRAWING		RESTRICTED TO: - SCALE: 4:1 SHEET 1 OF 2 REV B	

LOC		DIST		REVISIONS			
AA	22	P	LTR	DESCRIPTION	DATE	DWN	APVD
-	-	-	-	SEE SHEET 1	-	-	-



PC BOARD LAYOUT VIEWED FROM COMPONENT SIDE OF BOARD  
 SCALE 4:1



SUGGESTED PANEL CUTOUT DIMENSIONS  
 SCALE 3:1

DIMENSIONS:		TOLERANCES UNLESS OTHERWISE SPECIFIED:		DWN		tyco	
mm	Ø	0 PLC	±.25	TL VARELA	23 JUN 2005	DOCK 85	Tyco Electronics
		1 PLC	±.25	J. WESTMAN	23 JUN 2005		Harrisburg, PA 17105-3608
		2 PLC	±.25	S. FLICKINGER	23 JUN 2005		
		3 PLC	±.25				
		4 PLC	±.25				
		ANGLES	±.5				
MATERIAL		FINISH					
CUSTOMER DRAWING				SIZE	CAGE CODE	DRAWING NO	RESTRICTED TO
				A	00779	C=6339168	
				SCALE	4:1	SHEET	2 OF 2
				REV	B		