



Chipsmall Limited consists of a professional team with an average of over 10 year of expertise in the distribution of electronic components. Based in Hongkong, we have already established firm and mutual-benefit business relationships with customers from,Europe,America and south Asia,supplying obsolete and hard-to-find components to meet their specific needs.

With the principle of “Quality Parts,Customers Priority,Honest Operation,and Considerate Service”,our business mainly focus on the distribution of electronic components. Line cards we deal with include Microchip,ALPS,ROHM,Xilinx,Pulse,ON,Everlight and Freescale. Main products comprise IC,Modules,Potentiometer,IC Socket,Relay,Connector.Our parts cover such applications as commercial,industrial, and automotives areas.

We are looking forward to setting up business relationship with you and hope to provide you with the best service and solution. Let us make a better world for our industry!



Contact us

Tel: +86-755-8981 8866 Fax: +86-755-8427 6832

Email & Skype: info@chipsmall.com Web: www.chipsmall.com

Address: A1208, Overseas Decoration Building, #122 Zhenhua RD., Futian, Shenzhen, China

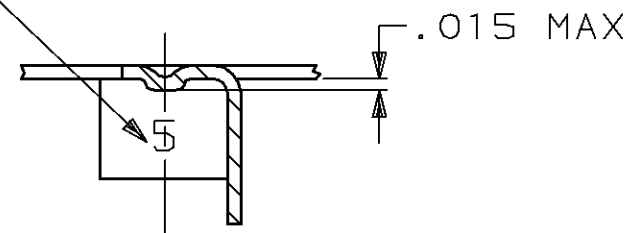


THIS DRAWING IS UNPUBLISHED. RELEASED FOR PUBLICATION ,19 .
 © COPYRIGHT 19 BY AMP INCORPORATED. ALL INTERNATIONAL RIGHTS RESERVED.

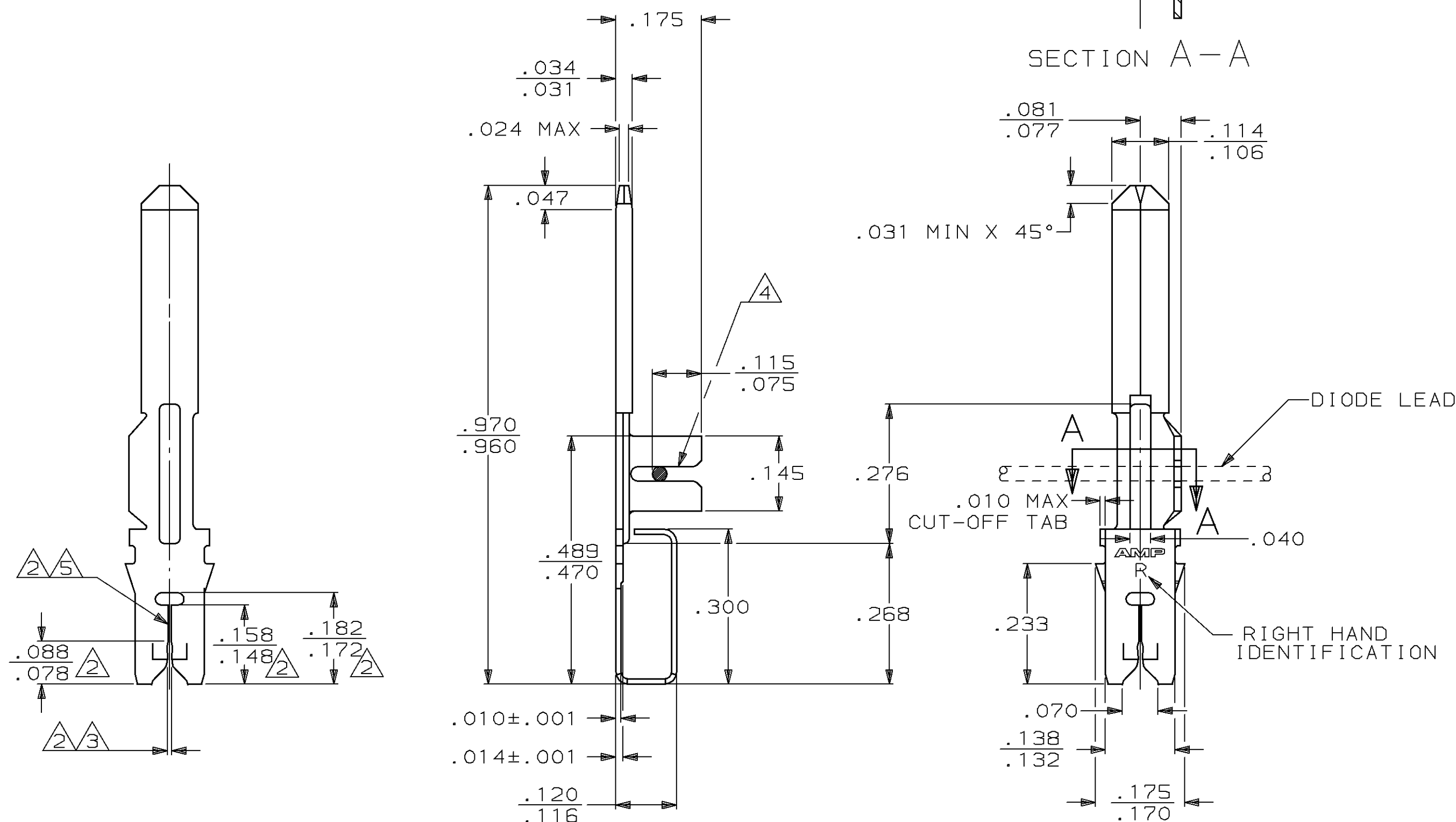
LOC		DIST		REVISIONS				DATE	APPD
AF	50	P	F	ZONE	LTR	DESCRIPTION			
				C		REV PER AF-6055	5/9/89	DKS	

- 1 MAG-MATE CAVITY SPECIFICATION.
- 2 CARRIER SIDE ONLY.
- 3 STRIPPING SHOULDERS
GAGING: GO .006 / NO GO .0095.
- 4 SLOT TERMINATES #20 SOLID WIRE.
GAGING: GO .027 / NO GO .031.
- 5 SLOT TERMINATES #31-#27 COPPER MAGNET WIRE EITHER SINGLE OR DOUBLE OF THE SAME SIZE.
GAGING: GO .0045 / NO GO .008.

IDENTIFICATION NUMBER FOR MAGNET WIRE RANGE



SECTION A-A



63434-1

PART NO

DO NOT SCALE PRINT. UNLESS SPECIFIED DIMENSIONS IN INCHES TOLERANCES ON : 2 PLC DEC ± - 3 PLC DEC ± .010 ANGLES ± -	DR	MS FEHER	1/6/88	AMP INCORPORATED Harrisburg, Pa. 17105				
	CHK	JR RUTH	2/23/88					
	MATERIAL	#4 HARD PRE-MILLED BRASS	APPD	NE NEFF	2/23/88	NAME TERMINAL, LOOSE PIECE, TAB/DIODE SLOT, RIGHT HAND, "110" FASTON, MAG-MATE™		
	FINISH	TIN	APPD	CG ATHERTON	2/23/88			
APPLICATION SPEC	114-2046	1	SIZE	C	FSCM NO	00779	DRAWING NO	63434
WEIGHT	-	SCALE	5:1	SHEET	1 OF 1			

63434

B

A