



Chipsmall Limited consists of a professional team with an average of over 10 year of expertise in the distribution of electronic components. Based in Hongkong, we have already established firm and mutual-benefit business relationships with customers from,Europe,America and south Asia,supplying obsolete and hard-to-find components to meet their specific needs.

With the principle of “Quality Parts,Customers Priority,Honest Operation,and Considerate Service”,our business mainly focus on the distribution of electronic components. Line cards we deal with include Microchip,ALPS,ROHM,Xilinx,Pulse,ON,Everlight and Freescale. Main products comprise IC,Modules,Potentiometer,IC Socket,Relay,Connector.Our parts cover such applications as commercial,industrial, and automotives areas.

We are looking forward to setting up business relationship with you and hope to provide you with the best service and solution. Let us make a better world for our industry!



Contact us

Tel: +86-755-8981 8866 Fax: +86-755-8427 6832

Email & Skype: info@chipsmall.com Web: www.chipsmall.com

Address: A1208, Overseas Decoration Building, #122 Zhenhua RD., Futian, Shenzhen, China



THIS DRAWING IS UNPUBLISHED.

RELEASED FOR PUBLICATION

, 19

© COPYRIGHT 19

BY AMP INCORPORATED. ALL INTERNATIONAL RIGHTS RESERVED.

LOC

DIST

AF

50

P

F

ZONE

LTR

REVISIONS

DESCRIPTION

DATE

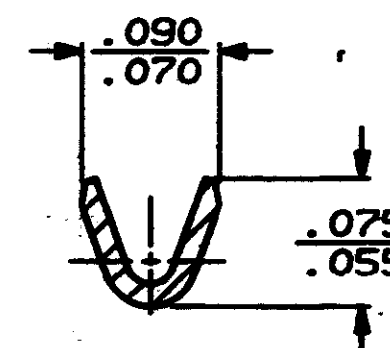
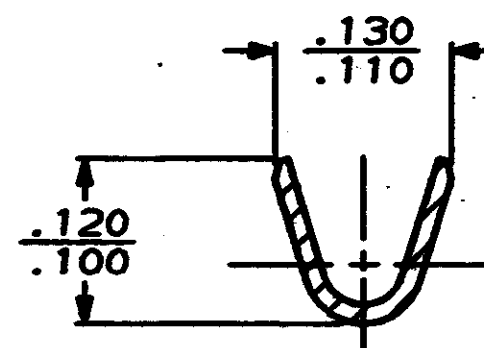
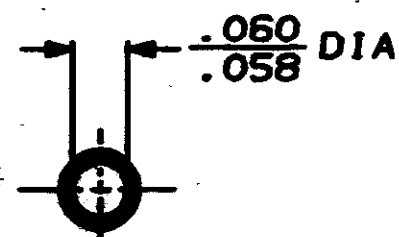
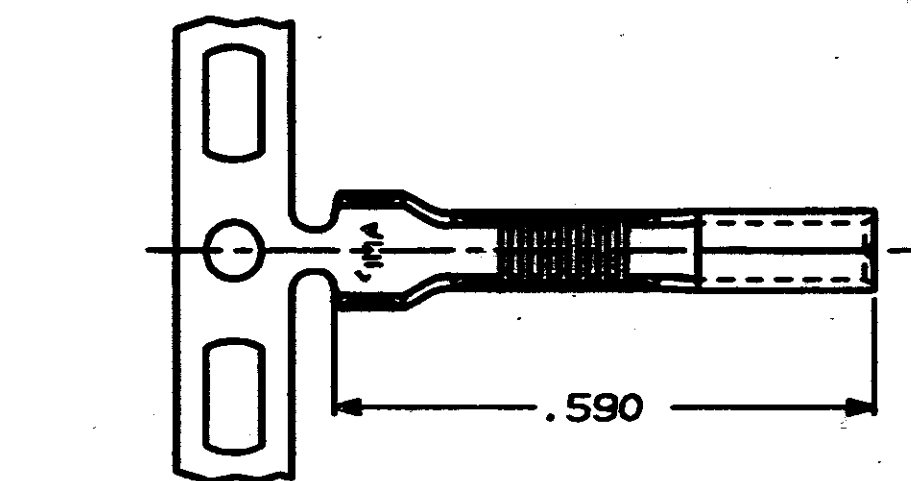
APPD

REV AF-5787, RELEASE PER FASR

12/7/88

22

1 CONTINUOUS STRIP ON REELS

SECTION A-A
SCALE 8:1SECTION B-B
SCALE 10:1

F	.100	.260	F	.055	.041	22	DO NOT SCALE PRINT. DIMENSIONS IN INCHES TOLERANCES ON: 2 PLC DEC ± - 3 PLC DEC ± .015 ANGLES ± - MATERIAL #4 HARD BRASS FINISH TIN PL .000080 MIN	.040-.060	29-22	63506-1
					.038	24				
					.037	26				
					.035	28				
					.035	29				
TYPE	WIDTH	STRIP LENGTH	TYPE	WIDTH	HEIGHT	WIRE				
INSUL BARREL CRIMP		±.015	WIRE BARREL CRIMP		±.002					
							OR P. FORTNEY 7/6/88	INSULATION RANGE		
							OR MS FEHER 7/8/88	MAGNET WIRE RANGE		
							OR D DECKER 7/8/88	PART NO		
							OR TL SHUTTER 7/8/88	AMP INCORPORATED		
							PRODUCT SPEC	Harrisburg, Pa. 17105		
							APPLICATION SPEC	RECEPTACLE, PIN, .062 DIA		
							WEIGHT	SIZE	PSCH NO	DRAWING NO
								B	00779	63506
								SCALE	5:1	SHEET
										1 OF 1