



Chipsmall Limited consists of a professional team with an average of over 10 year of expertise in the distribution of electronic components. Based in Hongkong, we have already established firm and mutual-benefit business relationships with customers from,Europe,America and south Asia,supplying obsolete and hard-to-find components to meet their specific needs.

With the principle of “Quality Parts,Customers Priority,Honest Operation,and Considerate Service”,our business mainly focus on the distribution of electronic components. Line cards we deal with include Microchip,ALPS,ROHM,Xilinx,Pulse,ON,Everlight and Freescale. Main products comprise IC,Modules,Potentiometer,IC Socket,Relay,Connector.Our parts cover such applications as commercial,industrial, and automotives areas.

We are looking forward to setting up business relationship with you and hope to provide you with the best service and solution. Let us make a better world for our industry!



## Contact us

Tel: +86-755-8981 8866 Fax: +86-755-8427 6832

Email & Skype: info@chipsmall.com Web: www.chipsmall.com

Address: A1208, Overseas Decoration Building, #122 Zhenhua RD., Futian, Shenzhen, China





## QUAD-BAND ANTENNA IS IDEAL FOR STEALTH APPLICATIONS

The Blade antenna provides versatile options for stealth applications and includes AMPS, GSM, DCS, and PCS cellular radio frequencies. The antenna provides multiple application options with high gain performance and measures only 125.5 x 34 x 5.1mm, allowing covert installation into vehicle interiors. The antenna can be paired with the Internal GPS antenna, part #637108, to support combined cellular plus GPS function.

Laird Technologies is a leading supplier of mobile antenna solutions for automotive, asset tracking and consumer electronics industries. Products include cellular antennas (AMPS, GSM/DCS/PCS, UMTS), GPS antennas, entertainment antennas (AM/FM, DAB, DVB-T, Satellite radio, TV), mobile communication antennas (Bluetooth, DSRC, RKE, TPMS, WiFi), satellite communication antennas and battery packs.

Leveraging our experience in M2M wireless modules, Laird Technologies also designs smart antennas integrating functionalities such as cellular, WiFi and Bluetooth® modems, GPS receivers and vehicle networking. All of these capabilities can be further integrated into M2M Devices, that add control electronics and firmware to provide the latest evolution in telematics systems.

### FEATURES

- Slim, flexible design for easy integration into vehicles
- Compact, ideally suited for stealth applications
- Maximum passive gain within form factor

### BENEFITS

- Low total-cost implementation
- Easy installation
- Easy concealment
- Small package size
- Meets enhanced environmental specifications

### APPLICATIONS

- General automotive aftermarket
- Fleet logistics, tracking, and diagnostics
- Theft protection
- Vehicle and asset recovery
- Navigation systems
- Infotainment systems
- On-board computing

global solutions: local support.™

Americas: +810.695.9810  
Europe: +44.1628.858.940  
Asia: +852.2268.6567



Innovative **Technology**  
for a **Connected** World

# Asset Tracking Internal Antenna Cellular|Blade

## Blade

AMPS      GSM      DCS      PCS

### ANTENNA SPECIFICATION

	AMPS	GSM	DCS	PCS
Frequency Range	824-894 MHz	880-960 MHz	1710-1880 MHz	1850-1990 MHz
Peak Gain	2.3 dBi	2.3 dBi	2.1 dBi	3.1 dBi
Polarization	Linear	Linear	Linear	Linear
Impedance	50 Ω	50 Ω	50 Ω	50 Ω
Output VSWR (Min. Performance)	≤ 2:1	≤ 2:1	≤ 2:1	≤ 2:1

### MECHANICAL SPECIFICATION

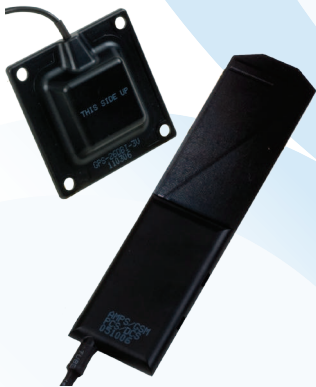
Dimension	125.5 x 34 x 5.1mm			
Radome Material	Cycoloy			
Connector	SMC			
Cable Length	4000 mm			
Cable Type	RG-174 Coaxial			
Mounting Method	Velcro, Adhesive			

### ENVIRONMENTAL SPECIFICATION

Operating Temperature	-40° to +85°C			
Humidity	Operation 95% RH at 65°C			
Ingress Protection	IP-50			
Drop Test / Shock	50 g shocks 10x3 axis / 1 meter drop 6 axis			
Vibration	10-1000 Hz vibration 1 hour 3 axis			

### ORDERING INFORMATION

Part Number	637109
Customization available w/MOQ	Cable type, length, connector type, mounting style



**Order with 637108 for a combination  
GPS/Cellular solution. Part #637110.**

#### TEL-DS-Internal-Blade 1210

Any information furnished by Laird Technologies, Inc. and its agents is believed to be accurate and reliable. Responsibility for the use and application of Laird Technologies materials rests with the end user, since Laird Technologies and its agents cannot be aware of all potential uses. Laird Technologies makes no warranties as to the fitness, merchantability or suitability of any Laird Technologies materials or products for any specific or general uses. Laird Technologies shall not be liable for incidental or consequential damages of any kind. All Laird Technologies products are sold pursuant to the Laird Technologies Terms and Conditions of sale in effect from time to time, a copy of which will be furnished upon request. © Copyright 2010 Laird Technologies, Inc. All Rights Reserved. Laird, Laird Technologies, the Laird Technologies Logo, and other marks are trademarks or registered trademarks of Laird Technologies, Inc. or an affiliate company thereof. Other product or service names may be the property of third parties. Nothing herein provides a license under any Laird Technologies or any third party intellectual property rights.