



Chipsmall Limited consists of a professional team with an average of over 10 year of expertise in the distribution of electronic components. Based in Hongkong, we have already established firm and mutual-benefit business relationships with customers from,Europe,America and south Asia,supplying obsolete and hard-to-find components to meet their specific needs.

With the principle of "Quality Parts,Customers Priority,Honest Operation,and Considerate Service",our business mainly focus on the distribution of electronic components. Line cards we deal with include Microchip,ALPS,ROHM,Xilinx,Pulse,ON,Everlight and Freescale. Main products comprise IC,Modules,Potentiometer,IC Socket,Relay,Connector.Our parts cover such applications as commercial,industrial, and automotives areas.

We are looking forward to setting up business relationship with you and hope to provide you with the best service and solution. Let us make a better world for our industry!



Contact us

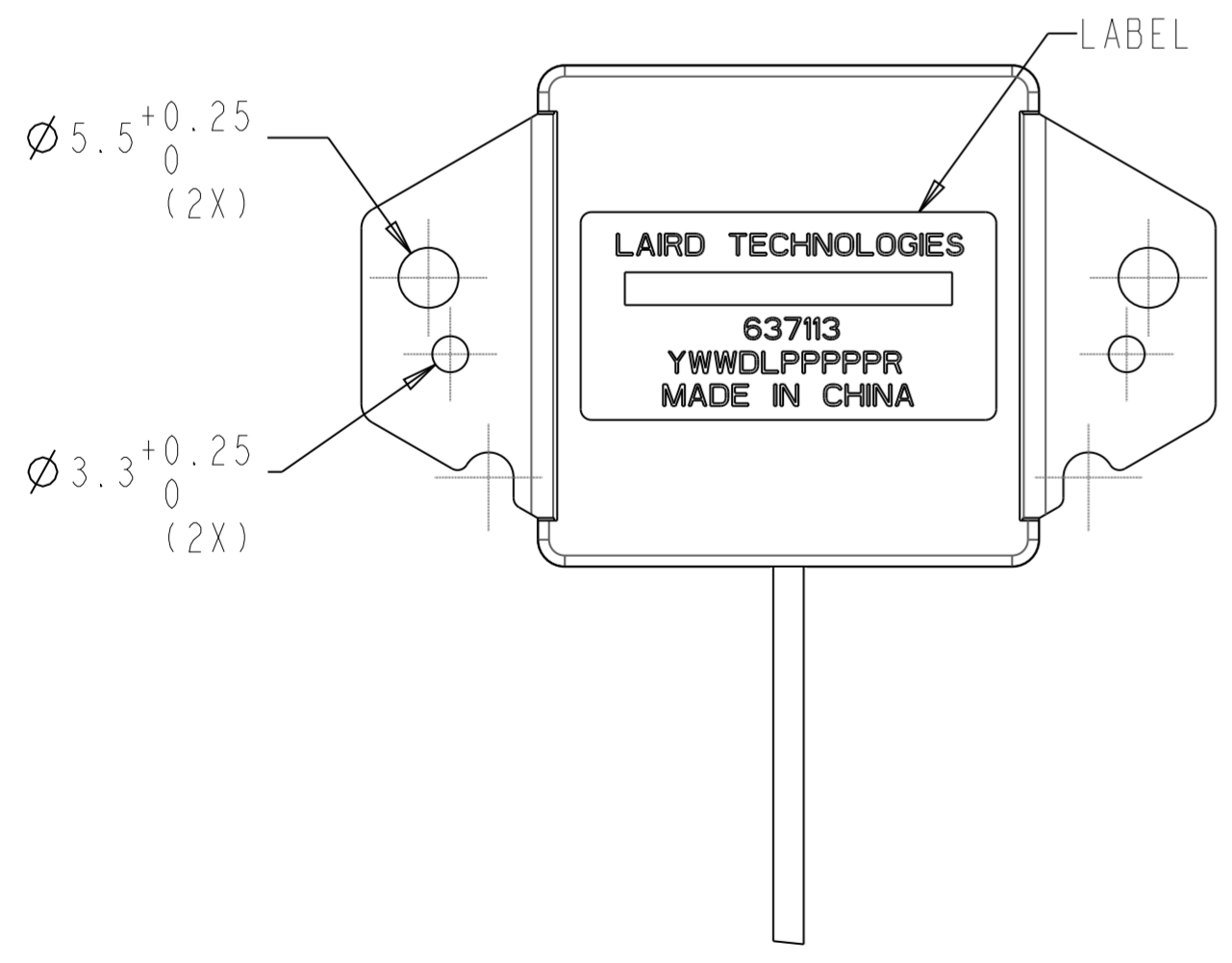
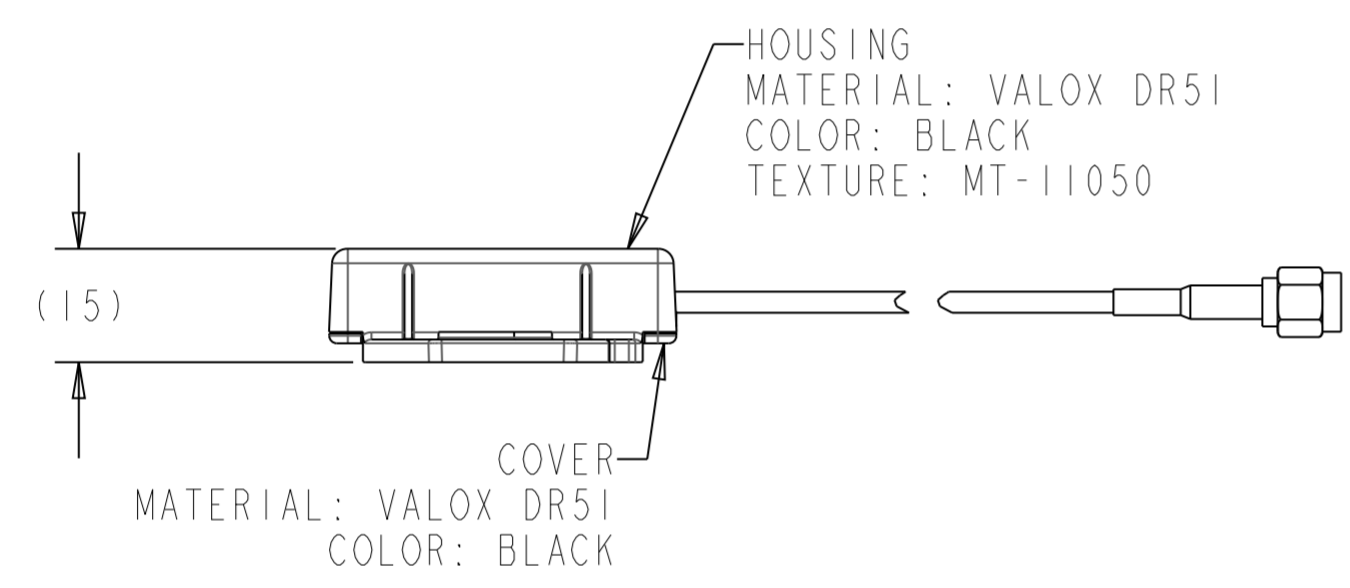
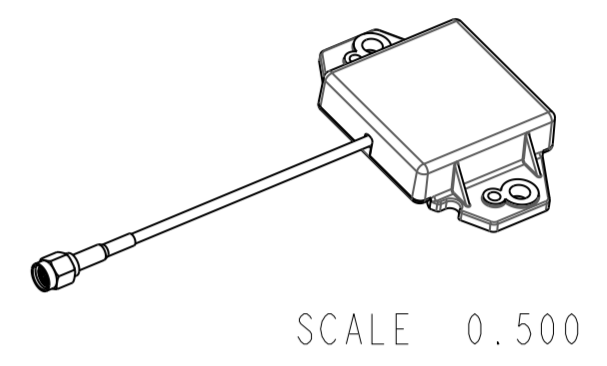
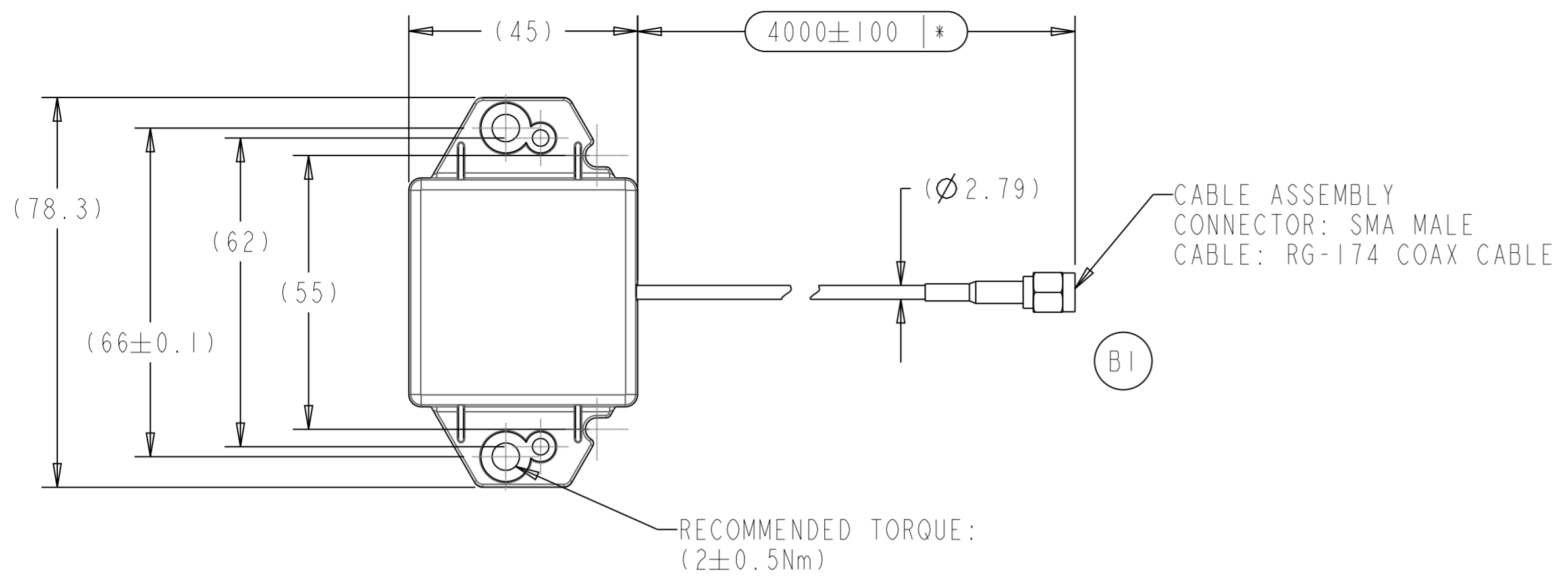
Tel: +86-755-8981 8866 Fax: +86-755-8427 6832

Email & Skype: info@chipsmall.com Web: www.chipsmall.com

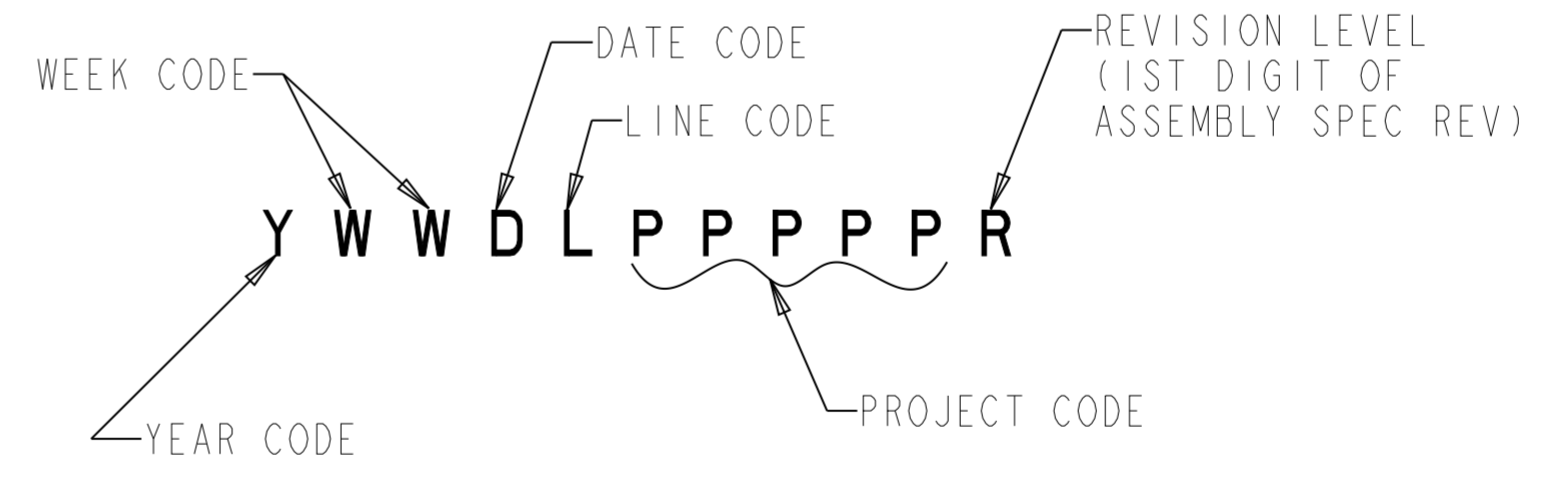
Address: A1208, Overseas Decoration Building, #122 Zhenhua RD., Futian, Shenzhen, China



REV	DESCRIPTION	REL.#	DATE	ENG
A0	RELEASE FOR PRODUCTION	R7520	27/SEP/10	TA
B0	LABEL CORRECTED	C008062	08/OCT/10	TA
B1	CONNECTOR PN CORRECTED ON CABLE ASSEMBLY DRAWING	C009281	12/MAY/11	JK



DATE CODE FORMAT



- GENERAL NOTES:
- VSWR: 2.4-2.485GHz <2:1
 - VSWR BANDWIDTH > 102MHz, <2:1
 - DC RESISTANCE: 10 Kohm ± 5%
 - BAR CODE TO CONTAIN DATE CODE
 - BAR CODE MUST BE ABLE TO BE READ BY A STANDARD LASER OR INFRARED BAR CODE READER.
 - ROHS COMPLIANT
 - IP52 RATED

BOTTOM SCALE 1.500

GENERAL TOLERANCES UNLESS NOTED TOLERANCES ACCORDING TO DIN-ISO 2768 m ALL DIMENSIONS mm. LINEAR: FROM 0.5 TO 6.0 ±0.1 OVER 6.0 TO 30.0 ±0.2 OVER 30.0 TO 120.0 ±0.3 OVER 120.0 TO 400.0 ±0.5 OVER 400.0 TO 1000.0 ±0.8 ANGULAR: ±1°		CONTROL DIMENSIONS MARKED WITH MUST BE TRACKED USING SPC. A CPK >= 1.67 IS REQUIRED		DESCRIPTION: 2.4GHz WiFi ANTENNA		ALL DIMENSIONS IN MILLIMETERS	
MATERIALS FREE OF CADMIUM / ASBESTOS		THIRD ANGLE PROJECTION		MATERIAL: SEE DETAIL		PRO-E WILDFIRE	
DRAWN: T. ALLEN		DATE: 27/SEP/10		CHECKED: J. KOWALEWICZ		DATE: 27/SEP/10	
DRAWING: LAIRD TECHNOLOGIES		DRAWING: 637113		SIZE: A2		COMPUTER GENERATED	
REFERENCE P/N: N/A		PLOT DATE: 27/SEP/10		WEIGHT: g N/A		SCALE: 1.0 : 1	
SHEET: 1 / 1							