



Chipsmall Limited consists of a professional team with an average of over 10 year of expertise in the distribution of electronic components. Based in Hongkong, we have already established firm and mutual-benefit business relationships with customers from,Europe,America and south Asia,supplying obsolete and hard-to-find components to meet their specific needs.

With the principle of “Quality Parts,Customers Priority,Honest Operation,and Considerate Service”,our business mainly focus on the distribution of electronic components. Line cards we deal with include Microchip,ALPS,ROHM,Xilinx,Pulse,ON,Everlight and Freescale. Main products comprise IC,Modules,Potentiometer,IC Socket,Relay,Connector.Our parts cover such applications as commercial,industrial, and automotives areas.

We are looking forward to setting up business relationship with you and hope to provide you with the best service and solution. Let us make a better world for our industry!



Contact us

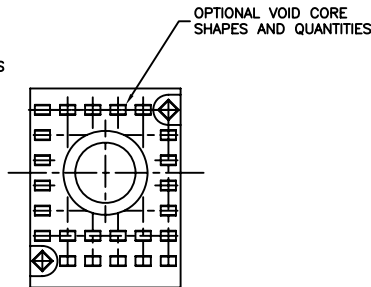
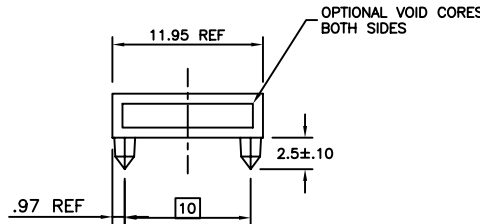
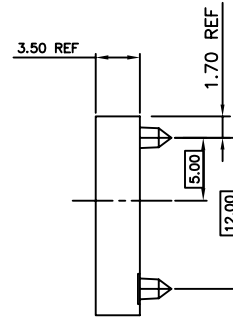
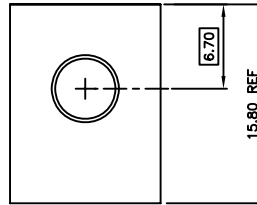
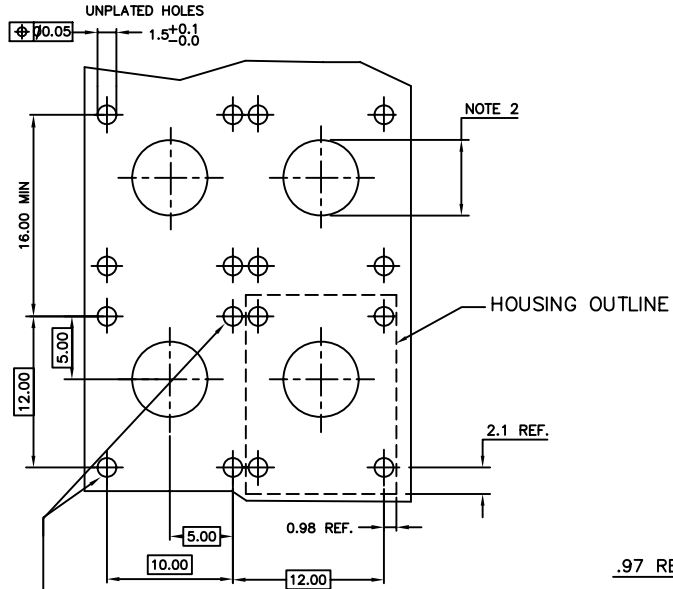
Tel: +86-755-8981 8866 Fax: +86-755-8427 6832

Email & Skype: info@chipsmall.com Web: www.chipsmall.com

Address: A1208, Overseas Decoration Building, #122 Zhenhua RD., Futian, Shenzhen, China



PRODUCT NO
63735-101
63735-101LF



HOLES REQUIRED FOR MIDPLANE APPLICATION ONLY

RECOMMENDED P.C.B. HOLE PATTERN.

NOTES

- MATERIAL: LCP, 30% GLASS FILLED, FLAME RETARDANT ACC. TO UL 94-V0 COLOR: NATURAL
- WHEN USED WITH GUIDE PIN, HOLE DIAMETER TO BE 3.25±0.10 AND UNPLATED.
-WHEN USED WITH STR. SCREW-TO-BOARD HIGH POWER INSERT, HOLE DIAMETER TO BE 3.25±0.10 AND PLATED WITH 5.00 MIN. PAD DIAMETER.
-WHEN USED WITH A PLUG/PLUG HIGH POWER COUPLER OR A RECEPTACLE/RECEPTACLE COAX COUPLER, HOLE DIAMETER TO BE 6.00+0.10/-0.00 AND UNPLATED.
- MAX. FLASH 0.1MM
- LEAST MATERIAL CONDITION ACC. TO ANSI Y14.5

- FOR LEAD FREE NUMBERS, ADD AN 'LF' SUFFIX. PART NUMBERS THAT DO NOT END IN 'LF' ARE LEAD FREE. EXAMPLE: 63735-101LF
- THE PRODUCTS WHERE THE PART NUMBER ENDS IN LF AND THE NONE LF PART NUMBERS MEET THE EUROPEAN UNION DIRECTIVES AND OTHER COUNTRY REGULATIONS AS DESCRIBED IN GS-22-008.
- ALL PRODUCTS WILL WITHSTAND EXPOSURE TO 260°C FOR 60 SECONDS IN A CONVECTION, INFRA-RED OR VAPOUR PHASE REFLOW OVEN.

A	V90642	MDF	6/3/99
B	V91703	MDF	7/19/99
C	V94015	MDF	9/22/99
D	V00020	JWS	1/25/00
E	V05-0458	TAB	5/16/05
F	V06-0077	JRV	3/14/06

mat'l. code				surface		tolerance		projection		product family	
NOTE 1				ASME Y14.5		ASME Y14.5		MM		METRAL (tm)	
ltr	ecn no	dr	date	tolerances unless otherwise specified		angles		MM		title	
D	V00020	JWS	2000-07-25			X*3				4 ROW HYBRID HEADER HSG.	
E	V05-0458	TAB	2005-05-16			XX*13				COAX, W/O WALLS, 12mm	
F	V06-0077	JRV	2006-03-14	0° ±2'		XXX*051		scale 2.25:1		dwg no	
G	V06-0606	JRV	2006-06-21	dr		M. FETROW		1999-06-03		sheet 1 of 1	
				engr		D. McCLUNE		1999-06-03		size	
				chr		D. McCLUNE		1999-06-03		63735	
				appd		D. McCLUNE		1999-06-03		type	
										CUSTOMER Drawing	
sheet index	revision sheet	G	1								