



Chipsmall Limited consists of a professional team with an average of over 10 year of expertise in the distribution of electronic components. Based in Hongkong, we have already established firm and mutual-benefit business relationships with customers from,Europe,America and south Asia,supplying obsolete and hard-to-find components to meet their specific needs.

With the principle of “Quality Parts,Customers Priority,Honest Operation,and Considerate Service”,our business mainly focus on the distribution of electronic components. Line cards we deal with include Microchip,ALPS,ROHM,Xilinx,Pulse,ON,Everlight and Freescale. Main products comprise IC,Modules,Potentiometer,IC Socket,Relay,Connector.Our parts cover such applications as commercial,industrial, and automotives areas.

We are looking forward to setting up business relationship with you and hope to provide you with the best service and solution. Let us make a better world for our industry!



Contact us

Tel: +86-755-8981 8866 Fax: +86-755-8427 6832

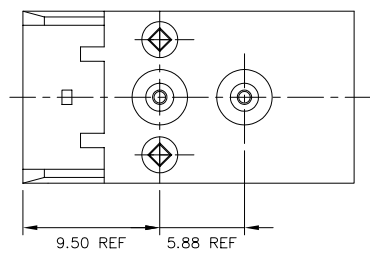
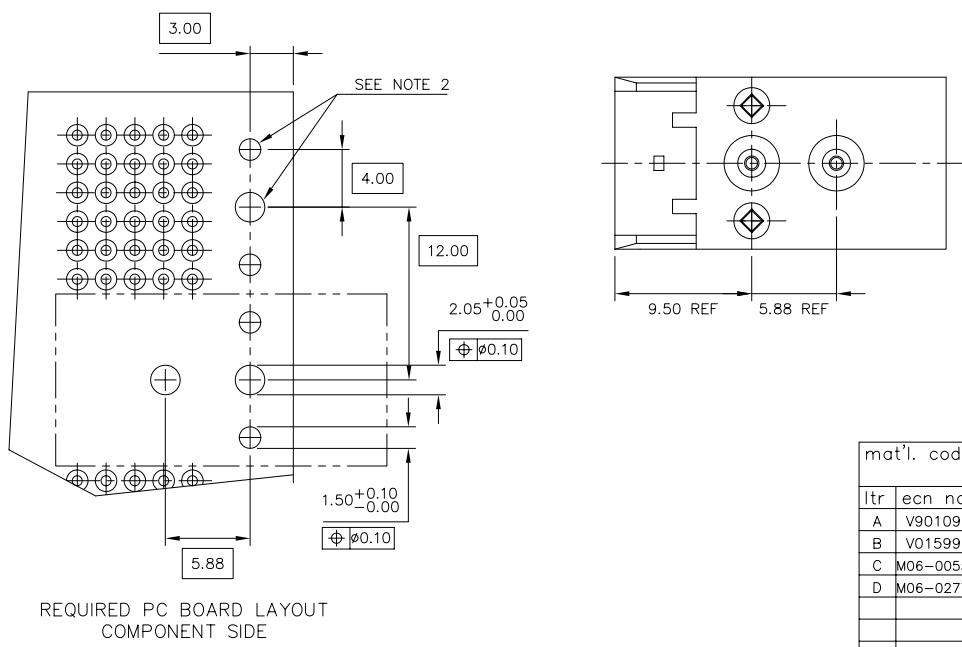
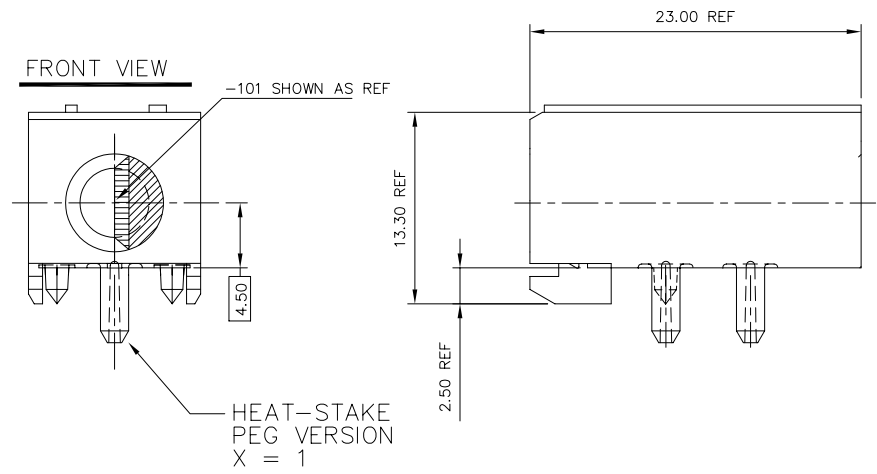
Email & Skype: info@chipsmall.com Web: www.chipsmall.com

Address: A1208, Overseas Decoration Building, #122 Zhenhua RD., Futian, Shenzhen, China



PRODUCT NO.	DESCRIPTION
63739-X0Z	HEAT STAKE VERSION

NOTE 5



NOTES:

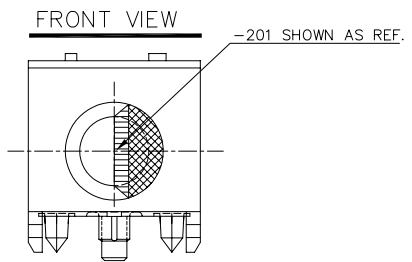
- ① HOUSING MATERIAL: LCP, 30% GLASS FILLED FLAME RETARDANT PER UL 94V-0. COLOR: NATURAL
- ② INDICATED HOLES ARE UNPLATED.
3. SEE SHEET 2 FOR PRESS-PEG VERSION. SEE SHEET 3 FOR SCREW-DOWN VERSION.
4. TO BE USED WITH P/N 63738.
- ⑤ ADD "LF" SUFFIX AT THE END OF PART NUMBER FOR LEAD FREE OPTION.
6. THIS PRODUCT MEETS EUROPEAN UNION DIRECTIVES AND OTHER COUNTRY REGULATION AS DESCRIBED IN GS-22-008.
7. THE HOUSING WILL WITHSTAND EXPOSURE TO 260°C PEAK TEMPERATURE FOR 15 SECONDS IN A WAVE SOLDER APPLICATION WITH A 1.5mm MINIMUM THICK CIRCUIT BOARD OR FOR 10-20 SECONDS IN A CONVECTION, INFRA-RED OR VAPOR PHASE REFLOW OVEN. SEE APPLICATION NOTES/PROCEDURES IF THEY ARE AVAILABLE.

mat'l. code		surface		tolerance		projection		product family	
-		ISO 1302 ✓		ISO 406 ISO 1101				METRAL (tm)	
ltr		ecn no		date		tolerances unless otherwise specified		title	
A	V90109	MDF	1/26/99	angles	linear	.0±.3 .00±.13 .000±.0051		RECEPTACLE KEY MODULE, 5 ROW	
B	V01599	JWS	7/13/00					scale 1:1	
C	M06-0055	MHT	2/01/06	0'±2'				dwg no	
D	M06-0277	MHT	7/22/06	dr		M.FETROW 1/26/99		sheet 1 of 4 size	
				enrg		C.PENDLETON 1/26/99		63739	
				chr		C.PENDLETON 1/26/99		A3	
				appd		C.PENDLETON 1/26/99		type Product Customer Drawing	
sheet index		revision sheet		D					
		1							

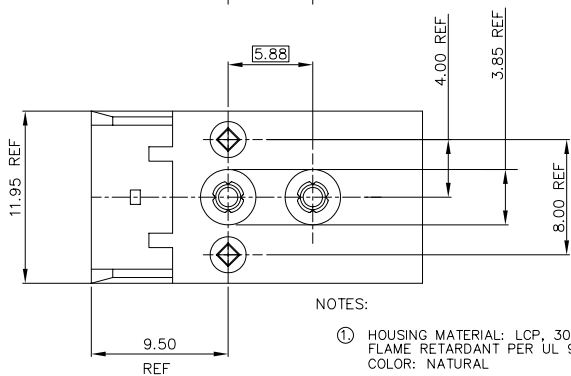
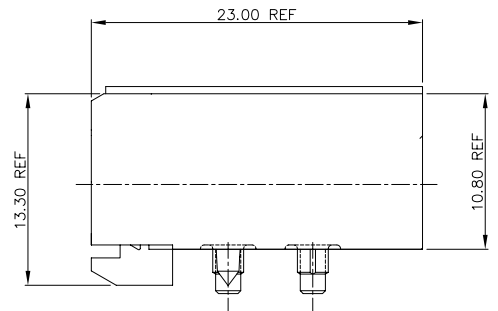
Copyright FCI
 FCIconnect.com

PRODUCT NO.	DESCRIPTION
63739-X0Z	PRESS-PEG VERSION

NOTE 5

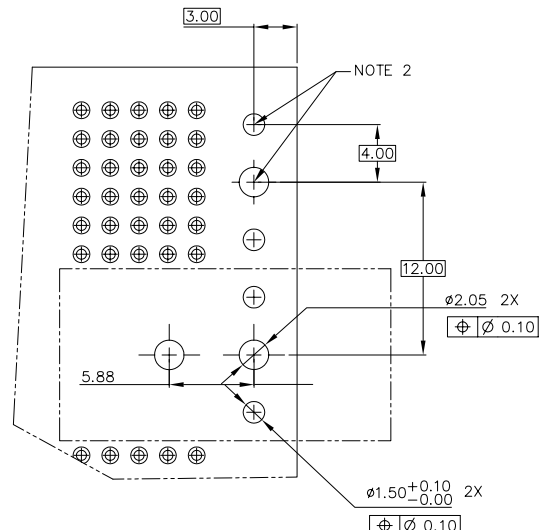


PRESS PEG VERSION
X = 2



NOTES:

- ① HOUSING MATERIAL: LCP, 30% GLASS FILLED FLAME RETARDANT PER UL 94V-0. COLOR: NATURAL
- ② INDICATED HOLES ARE UNPLATED.
3. THIS SHEET SHOWS DIMENSIONS OF OPTIONAL PRESS-PEG ONLY. FOR ALL OTHER DIMENSIONS AND REQUIREMENTS SEE SHEET 1. FOR HEAT-STAKE VERSION SEE SHEET 1, FOR SCREW-DOWN VERSION, SEE SHEET 3.
4. TO BE USED WITH P/N 63738.
- ⑤ ADD "Lf" SUFFIX AT THE END OF PART NUMBER FOR LEAD FREE OPTION.
6. THIS PRODUCT MEETS EUROPEAN UNION DIRECTIVES AND OTHER COUNTRY REGULATION AS DESCRIBED IN GS-22-008.



REQUIRED PC BOARD LAYOUT COMPONENT SIDE

7. THE HOUSING WILL WITHSTAND EXPOSURE TO 260°C PEAK TEMPERATURE FOR 15 SECONDS IN A WAVE SOLDER APPLICATION WITH A 1.5mm MINIMUM THICK CIRCUIT BOARD OR FOR 10-20 SECONDS IN A CONVECTION, INFRA-RED OR VAPOR PHASE REFLOW OVEN. SEE APPLICATION NOTES/PROCEDURES IF THEY ARE AVAILABLE.

mat'l. code		surface		tolerance		projection		product family	
-		ISO 1302 ✓		ISO 406		ISO 1101		METRAL (tm)	
ltr		ecn no		date		tolerances unless otherwise specified		title	
D						angles linear		RECEPTACLE KEY MODULE, 5 ROW	
						0°±2'		scale 1:1	
				dr		M.FETROW 1/26/99		dwg no	
				enr		C.PENDLETON 1/26/99		sheet 2 of 4 size	
				chr		C.PENDLETON 1/26/99		63739 A3	
				appd		C.PENDLETON 1/26/99		type Product Customer Drawing	
sheet index		revision sheet							

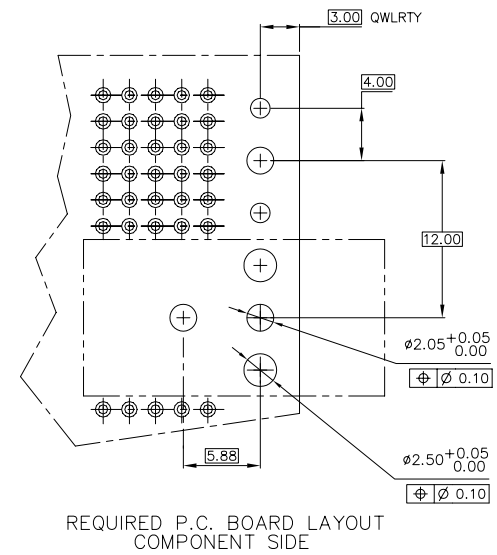
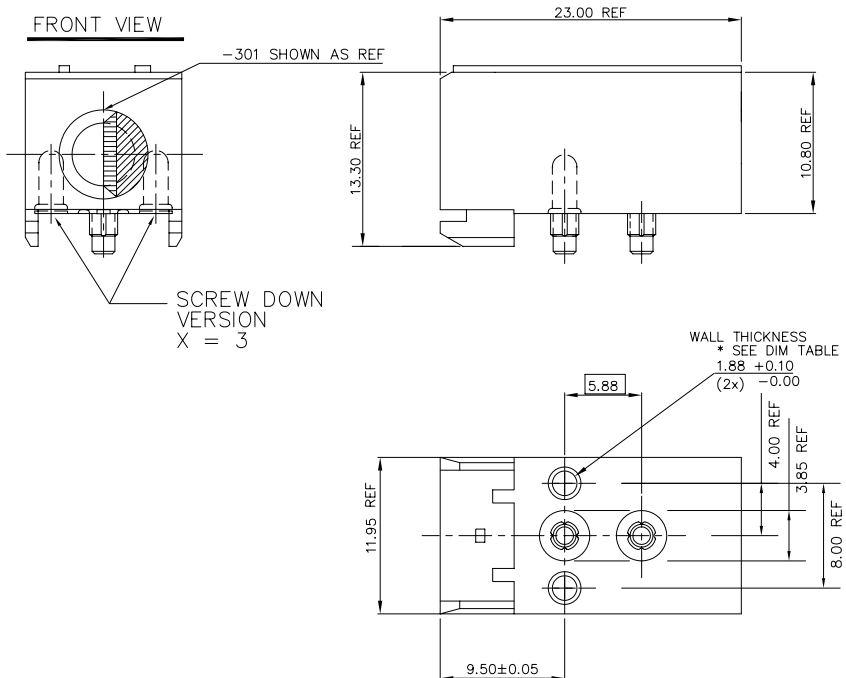


FCIconnect.com

Copyright FCI

PRODUCT NO.	DESCRIPTION
63739-X0Z	SCREW DOWN VERSION

NOTE 6



NOTES:

- HOUSING MATERIAL: LCP, 30% GLASS FILLED FLAME RETARDANT PER UL 94V-0. COLOR: NATURAL
- THIS SHEET SHOWS DIMENSIONS OF OPTIONAL SCREW-DOWN ONLY. FOR ALL OTHER DIMENSIONS AND REQUIREMENTS SEE SHEET 1. FOR HEAT-STAKE VERSION SEE SHEET 1, FOR PRESS-PEG, SEE SHEET 2.
- DIMENSIONS MARKED WITH AN * MAY DEVIATE AS SPECIFIED IN TABLE. ADVISE BERG ELECTRONICS WHEN DIMENSION IS BROUGHT INTO SPECIFIED TOLERANCE BY REPAIR OR REPLACEMENT.
- MOUNTING SCREW TO BE #2-56 THREAD FORMING.
- TO BE USED WITH P/N 63738.

- ADD "LF" SUFFIX AT THE END OF PART NUMBER FOR LEAD FREE OPTION.
- THIS PRODUCT MEETS EUROPEAN UNION DIRECTIVES AND OTHER COUNTRY REGULATION AS DESCRIBED IN GS-22-008.
- THE HOUSING WILL WITHSTAND EXPOSURE TO 260°C PEAK TEMPERATURE FOR 15 SECONDS IN A WAVE SOLDER APPLICATION WITH A 1.5mm MINIMUM THICK CIRCUIT BOARD OR FOR 10-20 SECONDS IN A CONVECTION, INFRA-RED OR VAPOR PHASE REFLOW OVEN. SEE APPLICATION NOTES/PROCEDURES IF THEY ARE AVAILABLE.

mat'l. code		surface		tolerance		projection		product family	
-		ISO 1302 ✓		ISO 406 ISO 1101		⊕		METRAL (tm)	
ltr		ecn no dr		date		tolerances unless otherwise specified		title	
D						.0±.3 .00±.13 .000±.0051		RECEPTACLE KEY MODULE, 5 ROW	
						MM		scale 1:1	
				dr		M.FETROW 1/26/99		dwg no	
				enr		C.PENDLETON 1/26/99		63739	
				chr		C.PENDLETON 1/26/99		sheet 3 of 4 size	
				appd		C.PENDLETON 1/26/99		A3	
sheet index		revision sheet						type Product Customer Drawing	



Copyright FCI

PRODUCT NO 63739-X0Z

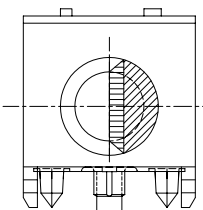
X = -1 (SHEET 1)

X = -2 (SHEET 2)

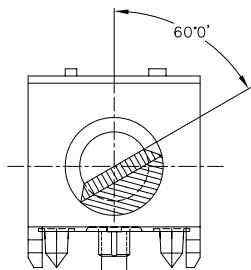
X = -3 (SHEET 3)

Z = 1 THRU 6 AS
SHOWN AT LEFT

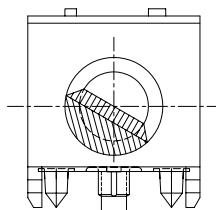
FRONT VIEW



-X01

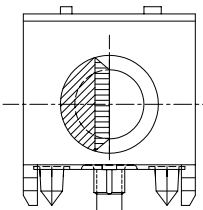


-X02

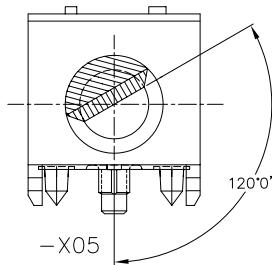


-X03

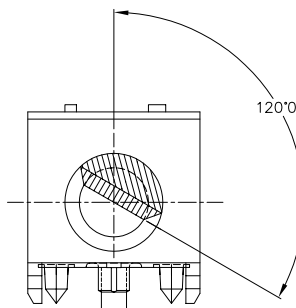
X = -2 SHOWN HERE



-X04



-X05



-X06



FCJconnect.com

Copyright FCJ

mat'l. code		surface		tolerance		projection		product family	
-		ISO 1302		ISO 406		ISO 1101		METRAL (tm)	
ltr		ecn no		dr		date		title	
								RECEPTACLE KEY	
								MODULE, 5 ROW	
								dwg no	
								63739	
								sheet 4 of 4 size	
								A3	
								type	
								Product Customer Drawing	
sheet index		revision sheet							