



Chipsmall Limited consists of a professional team with an average of over 10 year of expertise in the distribution of electronic components. Based in Hongkong, we have already established firm and mutual-benefit business relationships with customers from,Europe,America and south Asia,supplying obsolete and hard-to-find components to meet their specific needs.

With the principle of “Quality Parts,Customers Priority,Honest Operation,and Considerate Service”,our business mainly focus on the distribution of electronic components. Line cards we deal with include Microchip,ALPS,ROHM,Xilinx,Pulse,ON,Everlight and Freescale. Main products comprise IC,Modules,Potentiometer,IC Socket,Relay,Connector.Our parts cover such applications as commercial,industrial, and automotives areas.

We are looking forward to setting up business relationship with you and hope to provide you with the best service and solution. Let us make a better world for our industry!



Contact us

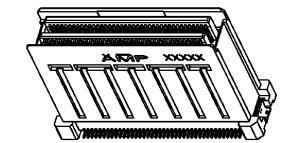
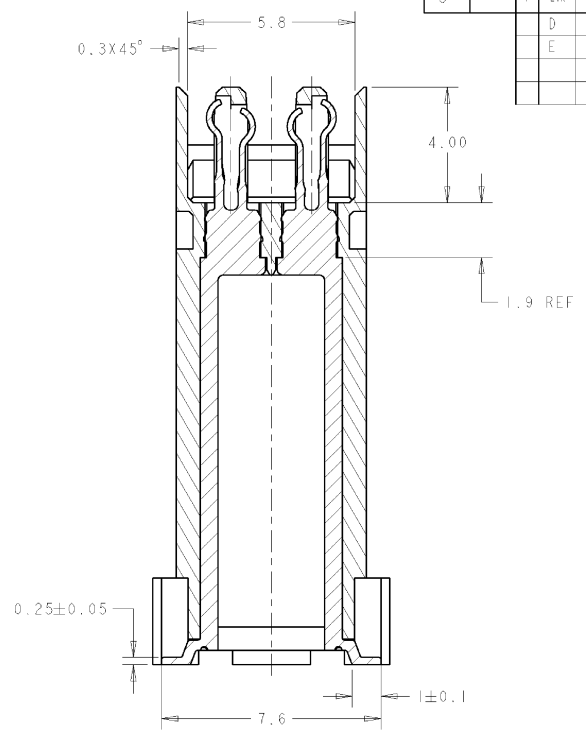
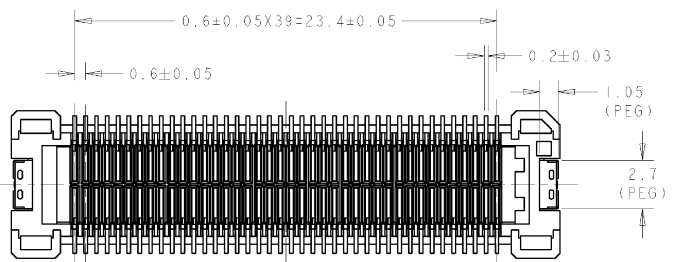
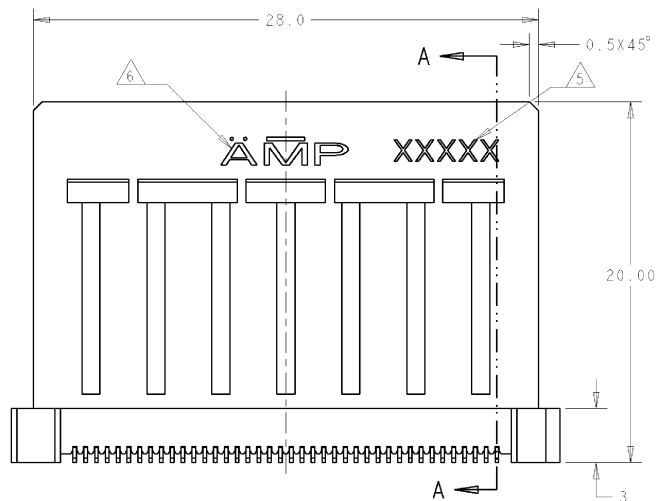
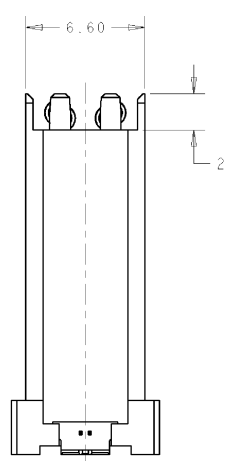
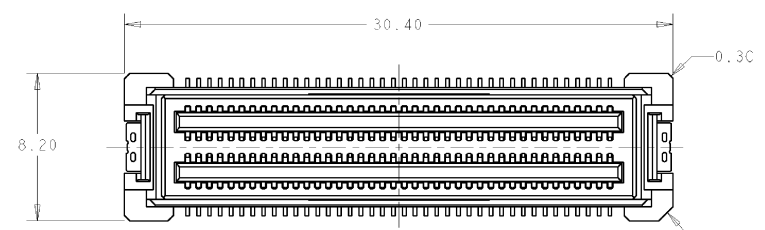
Tel: +86-755-8981 8866 Fax: +86-755-8427 6832

Email & Skype: info@chipsmall.com Web: www.chipsmall.com

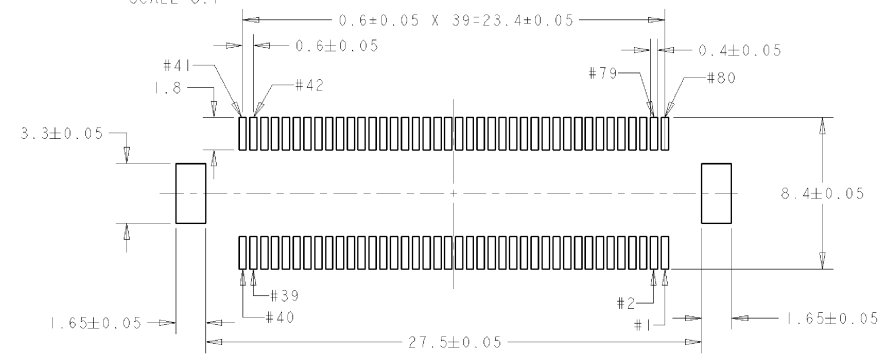
Address: A1208, Overseas Decoration Building, #122 Zhenhua RD., Futian, Shenzhen, China



LOC	DIST	REVISIONS				
		REV	DESCRIPTION	DATE	BY	CHK
J	-	D	REVISED	05DEC2007	T.K	M.K
		E	REVISED	23JUL2010	T.T	T.M



SECT A-A
SCALE 8:1



推奨基板取付寸法
RECOMMENDED PCB LAYOUT

- 1 MATERIAL : HOUSING: LCP
: CONTACT: COPPER ALLOY
- 2 FINISH : UNDER Ni PL. 0.8μmMIN
: CONTACT AREA: Au PL. 0.3μmMIN
: SOLDERING AREA: Au FLASH
- 3. COPLANARITY 0.1MAX.
- 4. -1 IS 45 CONNECTORS IN HARD TRAY.
AND -2 IS 49 CONNECTORS IN HARD TRAY (SEE SHEET 2,3)
- 5. DATE CODE IS MARKED TO CHINA PRODUCTION PRODUCT.
THE FACE SIDE AND BACK SIDE IS NOT ASKED.
- 6 AMP : MADE IN JAPAN
AMP : MADE IN CHINA

- 1 材料:ハウジング : 液晶ポリマー
: コンタクト : 銅合金
- 2 仕上り : 全面ニッケル下地 0.8μmMIN
: 接点部 金メッキ 0.3μmMIN
: 非点付部 金フラッシュ
- 3. コプラナリティー 0.1MAX
- 4. 梱包形態は、-1は45個入り、-2は49個入り(シート2,3参照)
: 中国生産品に関しては、このエリアにテートコードが印字される。
: ハウジングの表裏は問わない。
- 6 AMP : 日本生産品
AMP : 中国生産品

<small>THIS DRAWING IS A CONTROLLED DOCUMENT FOR TYCO ELECTRONICS CORPORATION IT IS SUBJECT TO CHANGE AND THE COMPANY AND THE CUSTOMER'S ORGANIZATION SHOULD BE CONTACTED FOR THE LATEST REVISION.</small>		DWN K Sakai 23JAN2006 CHK F Takemasa 23JAN2006 APPV M Kimura 23JAN2006	Tyco Electronics Tyco Electronics Corporation Kawasaki, Japan
DIMENSIONS: mm	TOLERANCES UNLESS OTHERWISE SPECIFIED: 0 PLC ±0.3 1 PLC ±0.25 2 PLC ±0.2 3 PLC ±0.2 4 PLC ±0.2 ANGLES ±0.3	NAME HDR ASSEMBLY 20mm HEIGHT 0.6mm PITCH 80P MICRO-STACK CONNECTOR	RESTRICTED TO -
MATERIAL SEE NOTE 1	FINISH SEE NOTE 2	WEIGHT 3.9g CUSTOMER DRAWING	SIZE CAGE CODE DRAWING NO A2 00779 C=6376609
		SCALE 5:1	SHEET 1 OF 2 REV E

THIS DRAWING IS UNPUBLISHED. RELEASED FOR PUBLICATION 2006
 © COPYRIGHT 2006 BY TYCO ELECTRONICS CORPORATION. ALL RIGHTS RESERVED.

LOC	DIST	REVISIONS			
P	LTR	DESCRIPTION	DATE	DWN	APVD
J	-	-	-	-	-

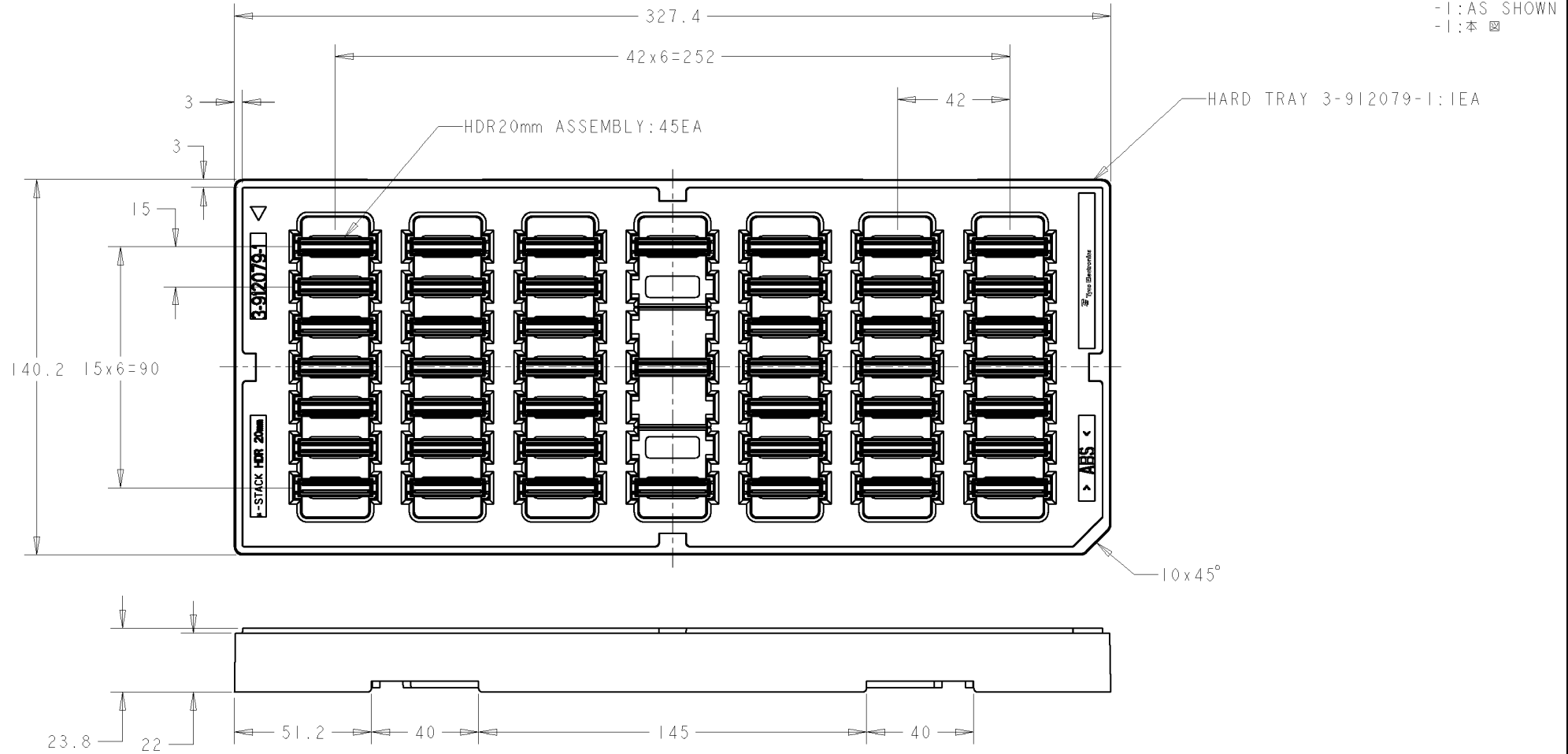


Fig 1: HARD TRAY PACKING SPEC

45	BLACK
CONN QTY	HARD TRAY COLOR

<small>THIS DRAWING IS A CONTROLLED DOCUMENT FOR TYCO ELECTRONICS CORPORATION. IT IS SUBJECT TO CHANGE AND THE CONTROLLING ENGINEERING ORGANIZATION SHOULD BE CONTACTED FOR THE LATEST REVISION.</small>		DWN: <u>K. Sakai</u> 23JAN2006 CHK: <u>E. Takemasa</u> 23JAN2006 APVD: <u>M. Kimura</u> 23JAN2006		Tyco Electronics Tyco Electronics Corporation Kawasaki, Japan	
DIMENSIONS: mm 		TOLERANCES UNLESS OTHERWISE SPECIFIED: 0. PLC ± 1. PLC ± 2. PLC ± 3. PLC ± 4. PLC ± ANGLES ±		NAME: HDR ASSEMBLY 20mm HEIGHT 0.6mm PITCH 80P MAICRO-STACK CONNECTOR	
MATERIAL: -		FINISH: -		SIZE: A3 CAGE CODE: 00779 DRAWING NO: C=6376609 RESTRICTED TO: -	
CUSTOMER DRAWING				SCALE: 2:3 SHEET: 2 OF 2 REV: E	