



Chipsmall Limited consists of a professional team with an average of over 10 year of expertise in the distribution of electronic components. Based in Hongkong, we have already established firm and mutual-benefit business relationships with customers from,Europe,America and south Asia,supplying obsolete and hard-to-find components to meet their specific needs.

With the principle of “Quality Parts,Customers Priority,Honest Operation,and Considerate Service”,our business mainly focus on the distribution of electronic components. Line cards we deal with include Microchip,ALPS,ROHM,Xilinx,Pulse,ON,Everlight and Freescale. Main products comprise IC,Modules,Potentiometer,IC Socket,Relay,Connector.Our parts cover such applications as commercial,industrial, and automotives areas.

We are looking forward to setting up business relationship with you and hope to provide you with the best service and solution. Let us make a better world for our industry!



Contact us

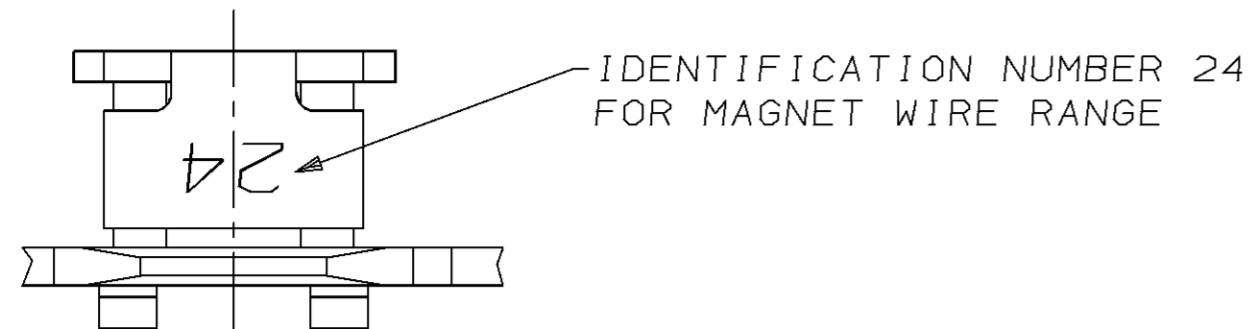
Tel: +86-755-8981 8866 Fax: +86-755-8427 6832

Email & Skype: info@chipsmall.com Web: www.chipsmall.com

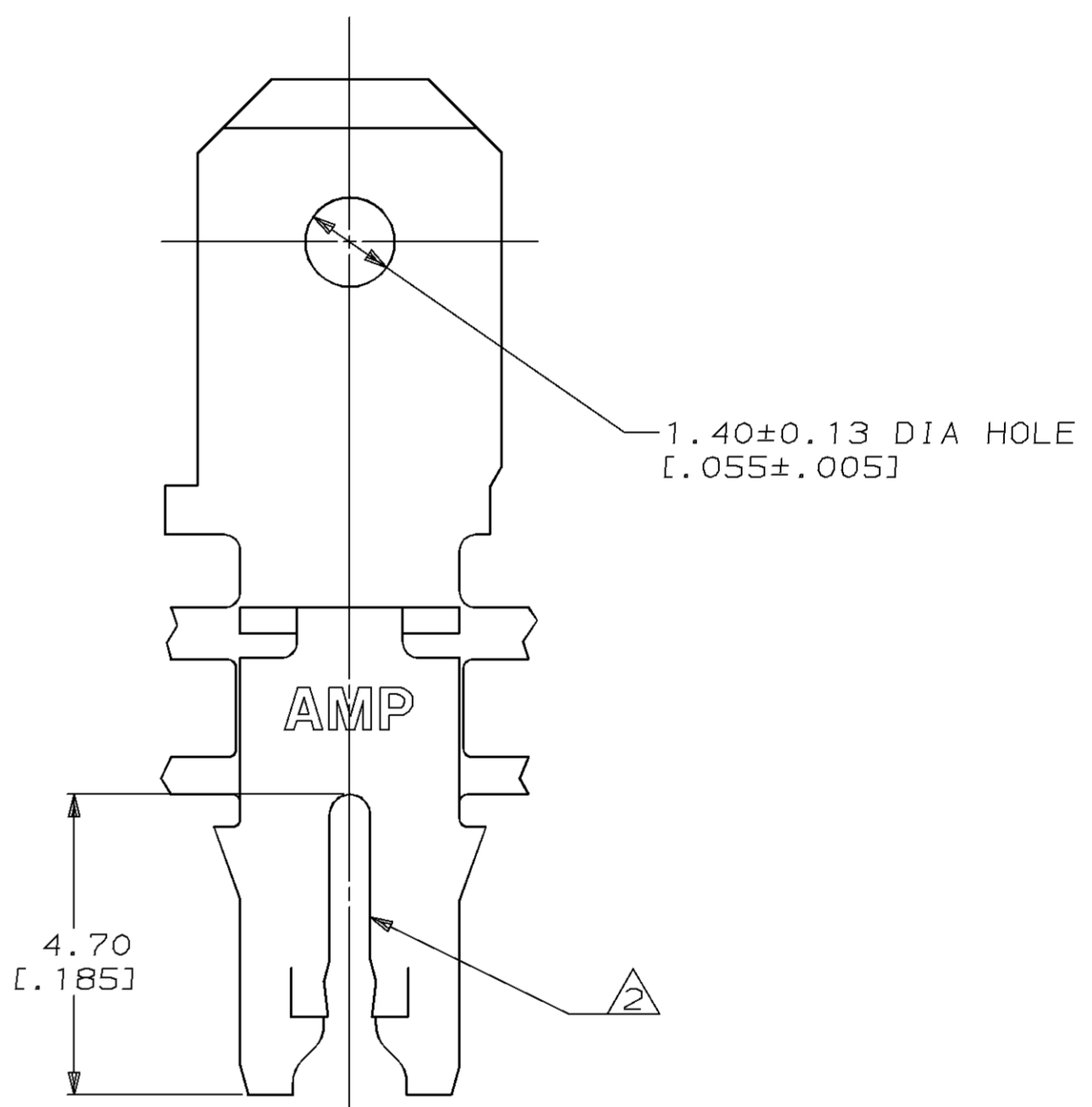
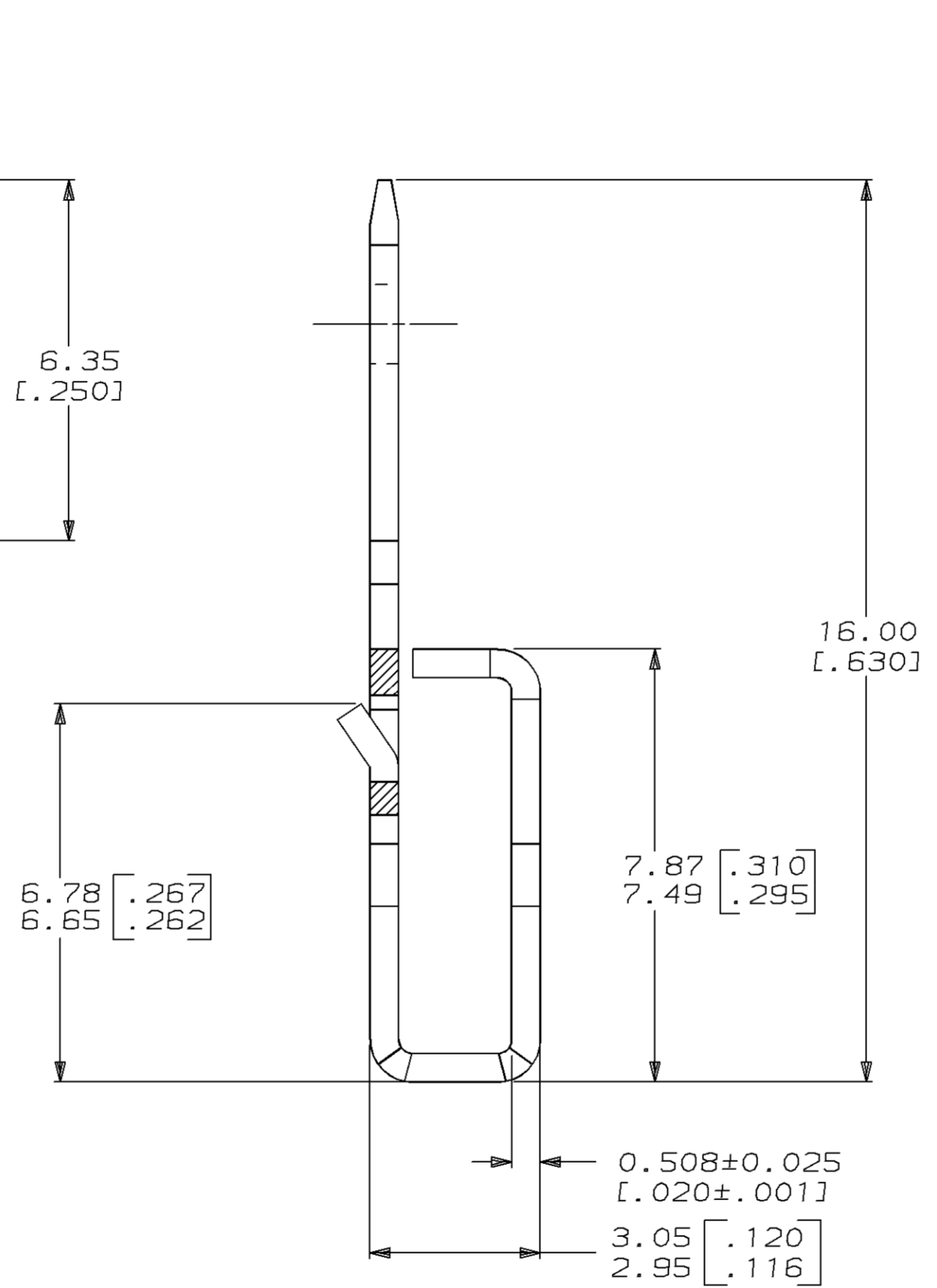
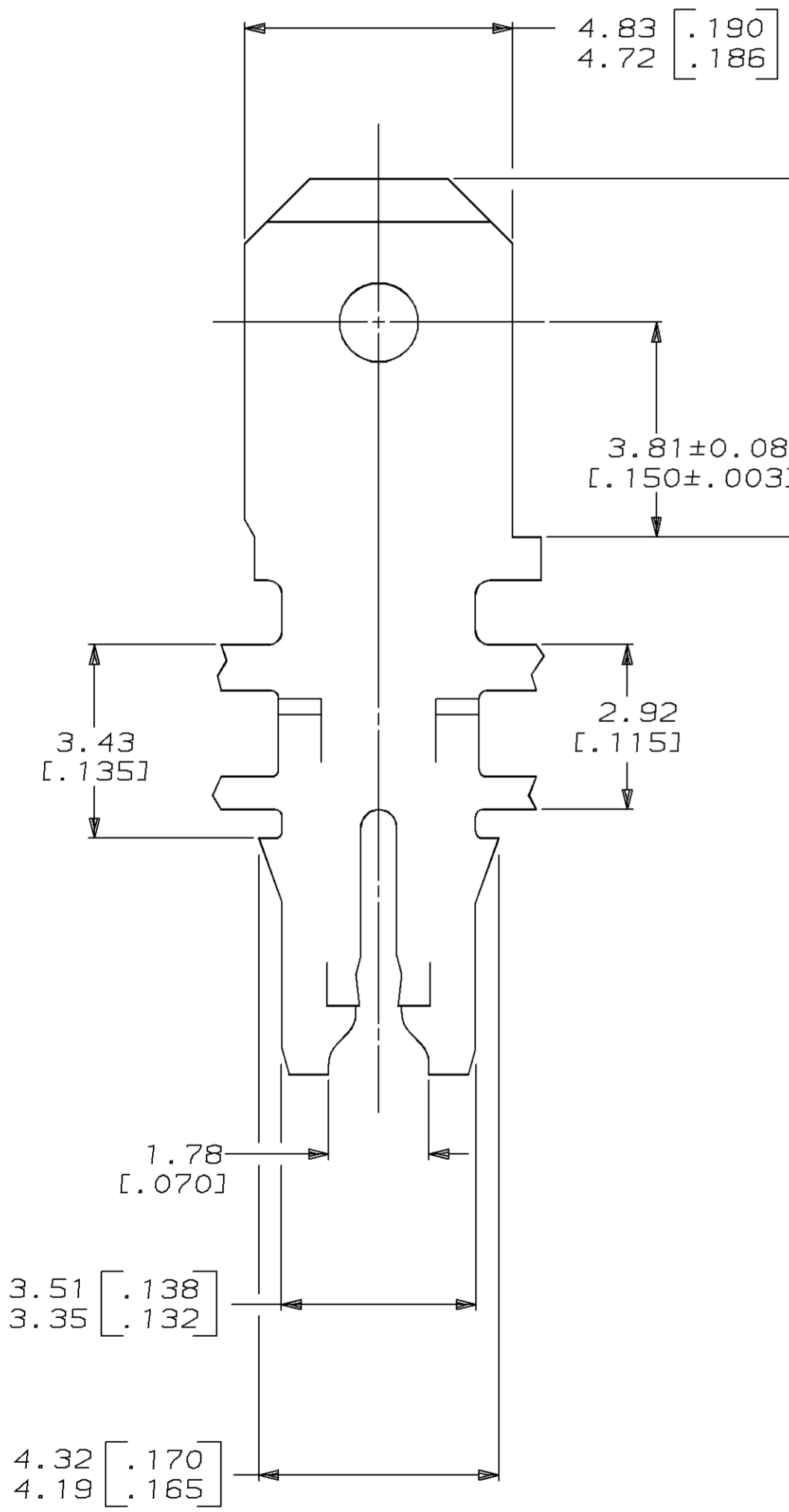
Address: A1208, Overseas Decoration Building, #122 Zhenhua RD., Futian, Shenzhen, China



| LOC | | DIST | | ZONE | | LTR | | REVISIONS | | DATE | APPD |
|-----|----|------|---|------|--|-----|--|------------------------------------|-----------|-------|------|
| AF | 50 | P | F | | | A | | REL TO PRODUCTION PER 0710-0158-94 | 24/JUN/94 | RB/NN | |



- CONTINUOUS STRIP ON REELS WITH TERMINALS LOCATED ON 5.59±0.08 [.220±.003] CENTERS.
- SLOT TERMINATES A SINGLE MAGNET WIRE ONLY. COPPER RANGE: 0.91-1.15mm [#19-#17] AWG.
- AFTER INSERTION INTO PLASTIC HOLDER TAB PORTION MUST BE BENT OVER 45° TO 90° OR POTTED-IN TO PREVENT PULL-OUT WHEN MATING RECEPTACLE IS DISCONNECTED.



63782-1
PART NO

| | | | | |
|---|-------------------------------------|--|--------------------|-----------------------|
| DO NOT SCALE PRINT. UNLESS SPECIFIED DIMENSIONS IN mm [INCHES] TOLERANCES ON: 2 PLC DEC ± 0.25 [.010] 3 PLC DEC ± - ANGLES ± - | DR 22/MAR/94 MICHAEL S. FEHER | AMP Incorporated Harrisburg, PA 17105-3608 | | |
| | CHK 25/MAR/94 PHILLIP M. FORTNEY | | | |
| MATERIAL 4M BRASS | APPD 28/MAR/94 NELSON E. NEFF | NAME TERMINAL, TAB, 4.75 [.187] FASTON™ MAG-MATE™ | | |
| FINISH 0.002032 [.000080] MIN TIN PER MIL-T-10727 | APPD 28/MAR/94 TERRY L. SHUTTER | SIZE C | CAGE CODE 00779 | DRAWING NO G=63782 |
| | PRODUCT SPEC 108-2012 | SCALE 10:1 | SHEET 1 OF 1 | |
| | APPLICATION SPEC 114-2067 | CUSTOMER DRAWING | | |
| | WEIGHT - | | | |

THIS DRAWING IS A CONTROLLED DOCUMENT FOR AMP INCORPORATED. IT IS SUBJECT TO CHANGE AND THE CONTROLLING ENGINEERING ORGANIZATION SHOULD BE CONTACTED FOR THE LATEST REVISION.