



Chipsmall Limited consists of a professional team with an average of over 10 year of expertise in the distribution of electronic components. Based in Hongkong, we have already established firm and mutual-benefit business relationships with customers from,Europe,America and south Asia,supplying obsolete and hard-to-find components to meet their specific needs.

With the principle of “Quality Parts,Customers Priority,Honest Operation,and Considerate Service”,our business mainly focus on the distribution of electronic components. Line cards we deal with include Microchip,ALPS,ROHM,Xilinx,Pulse,ON,Everlight and Freescale. Main products comprise IC,Modules,Potentiometer,IC Socket,Relay,Connector.Our parts cover such applications as commercial,industrial, and automotives areas.

We are looking forward to setting up business relationship with you and hope to provide you with the best service and solution. Let us make a better world for our industry!



Contact us

Tel: +86-755-8981 8866 Fax: +86-755-8427 6832

Email & Skype: info@chipsmall.com Web: www.chipsmall.com

Address: A1208, Overseas Decoration Building, #122 Zhenhua RD., Futian, Shenzhen, China



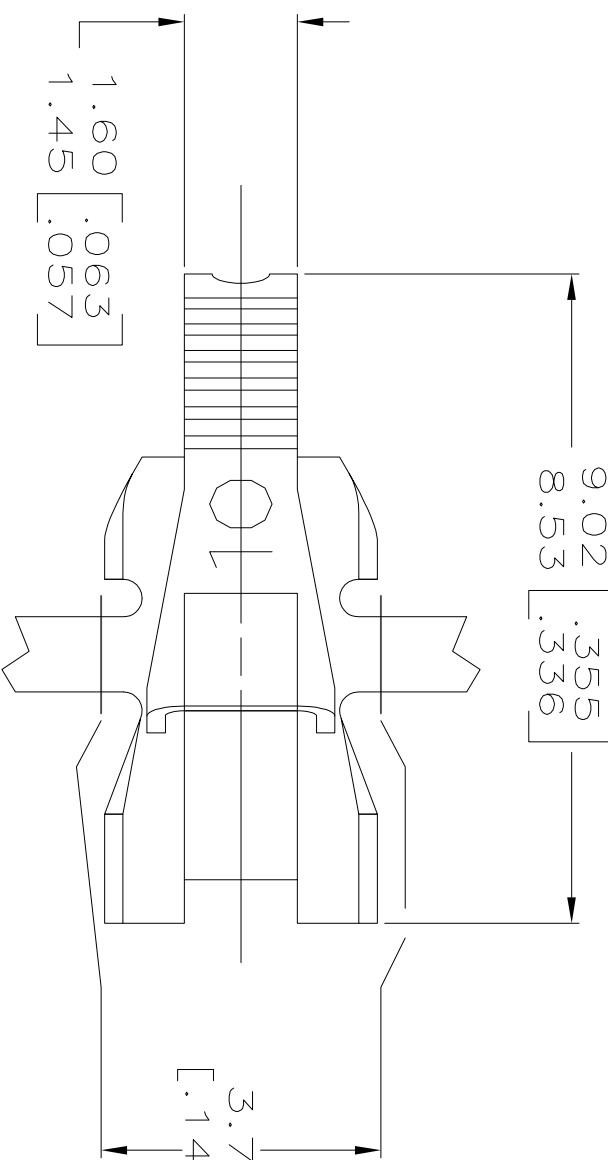
THIS DRAWING IS UNPUBLISHED.
 RELEASED FOR PUBLICATION
 BY TYCO ELECTRONICS CORPORATION. ALL RIGHTS RESERVED.

LOO AF 50 DIST

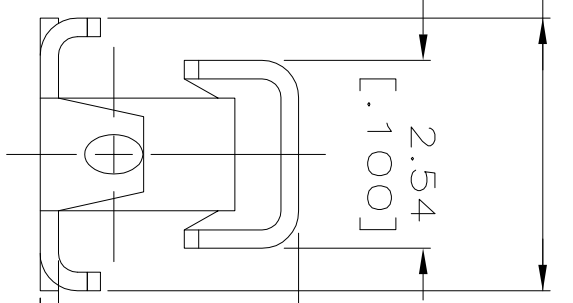
REVISIONS

P	LTR	DESCRIPTION	DATE	DWN	APVD
D2		REVISED PER ECR-12-022060	17FEB13	CX	LL

9.02 [.355]
 8.53 [.336]

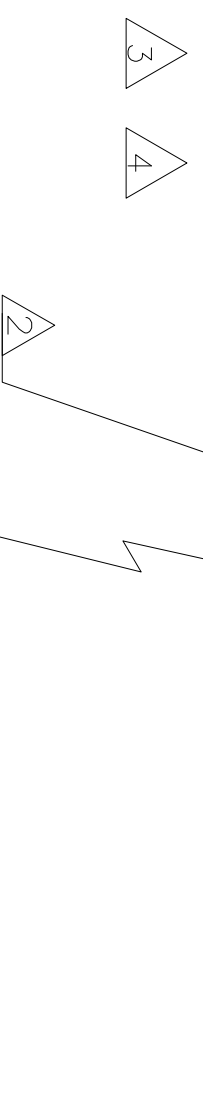


3.76
 3.61
 [.148]
 [.142]



3.68 [.145]
 3.30 [.130]
 0.254 ± 0.025
 [.010 ± .001]

SELECT TIN-LEAD



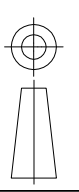
SELECT GOLD



- 1 CONTINUOUS STRIP ON REELS WITH TERMINALS LOCATED ON 6.10 ± 0.08 [.240 ± .003] CENTERS. IDENTIFICATION NUMBER 10 FOR MAGNET WIRE RANGE.
- 2
- 3 0.000762 [.000030] MIN SELECT GOLD ON ONE SIDE AS SHOWN, 0.00127 [.000050] MIN SELECT TIN-LEAD ON BOTH SIDES AS SHOWN ALL OVER 0.00127 [.000050] MIN NICKEL UNDERPLATE
- 4 0.000762 [.000030] MIN SELECT GOLD ON ONE SIDE AS SHOWN, 0.00127 [.000050] MIN SELECT TIN ON BOTH SIDES AS SHOWN ALL OVER 0.00127 [.000050] MIN NICKEL UNDERPLATE
- 5 PREPRODUCTION - FASR REQUIRED

THIS DRAWING IS A CONTROLLED DOCUMENT.

DIMENSIONS: MM [INCHES]



TOLERANCES UNLESS OTHERWISE SPECIFIED:

- 0 PLC ± -
- 1 PLC ± -
- 2 PLC ± 0.25 [.010]
- 3 PLC ± -
- 4 PLC ± -
- ANGLES ± -

MATERIAL HO2 BRASS

SEE TABLE

COPPER MAGNET WIRE RANGE

FINISH

PART NO.

0.05-0.13mm	[#44-#36]	AWG	4	5	63845-2
OBSOLETE	0.05-0.13mm	[#44-#36]	AWG	3	63845-1

DWN R.GRZYBOWSKI 4/MAY/95
 CHK M.S. FEHER 4/MAY/95
 APVD TL SHUTTER 4/MAY/95
 PRODUCT SPEC 108-2016
 APPLICATION SPEC 114-2047
 WEIGHT -

tyco Tyco Electronics Corporation
Electronics Harrisburg, Pa 17105-3608
 TERMINAL, POKE-IN,
 MINI MAG-MATE

CUSTOMER DRAWING	SIZE A3	CAGE CODE 00779	DRAWING NO. 63845	RESTRICTED TO
	SCALE 10:1	SHEET 1	OF 1	REV D2