



Chipsmall Limited consists of a professional team with an average of over 10 year of expertise in the distribution of electronic components. Based in Hongkong, we have already established firm and mutual-benefit business relationships with customers from,Europe,America and south Asia,supplying obsolete and hard-to-find components to meet their specific needs.

With the principle of "Quality Parts,Customers Priority,Honest Operation,and Considerate Service",our business mainly focus on the distribution of electronic components. Line cards we deal with include Microchip,ALPS,ROHM,Xilinx,Pulse,ON,Everlight and Freescale. Main products comprise IC,Modules,Potentiometer,IC Socket,Relay,Connector.Our parts cover such applications as commercial,industrial, and automotives areas.

We are looking forward to setting up business relationship with you and hope to provide you with the best service and solution. Let us make a better world for our industry!



Contact us

Tel: +86-755-8981 8866 Fax: +86-755-8427 6832

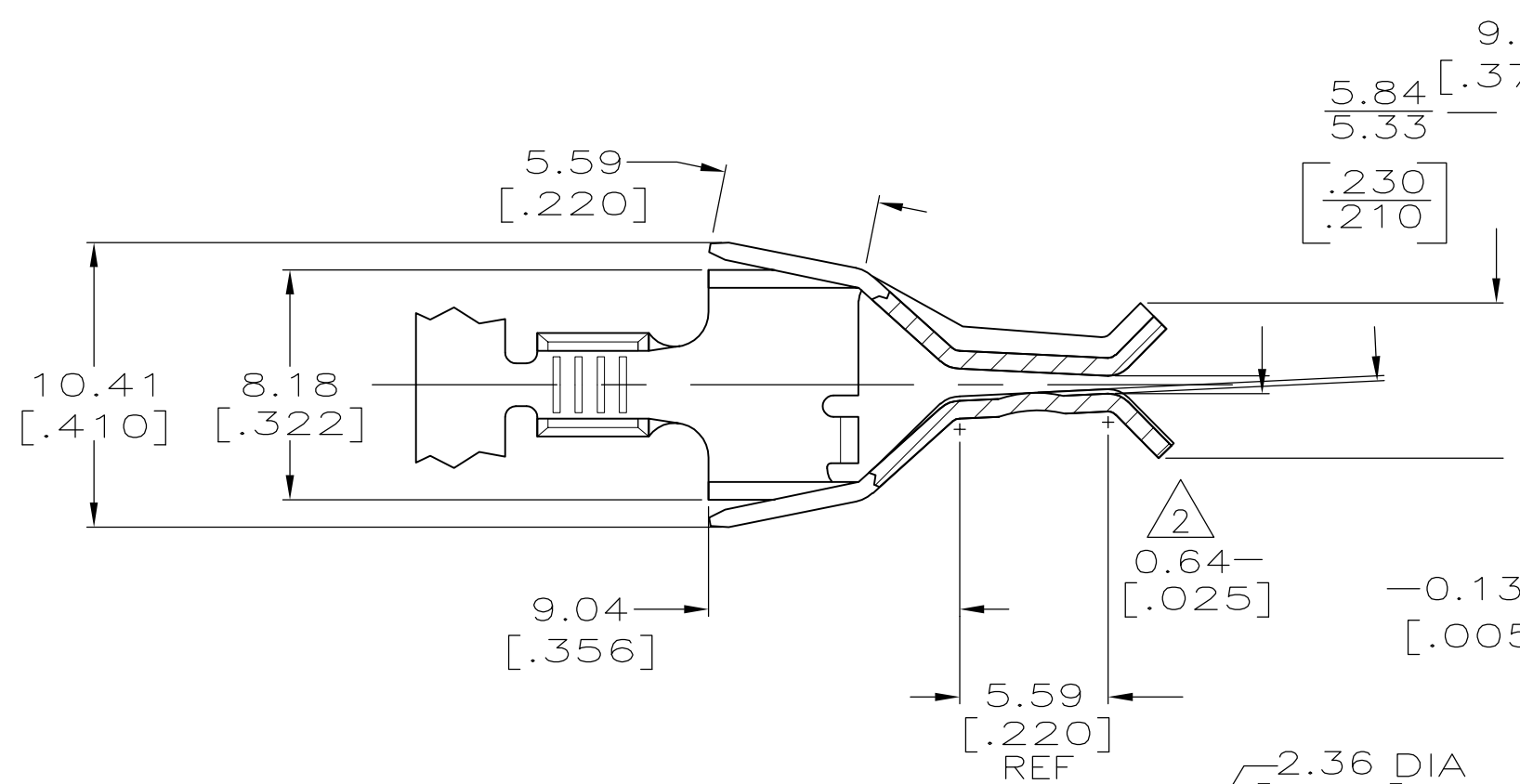
Email & Skype: info@chipsmall.com Web: www.chipsmall.com

Address: A1208, Overseas Decoration Building, #122 Zhenhua RD., Futian, Shenzhen, China

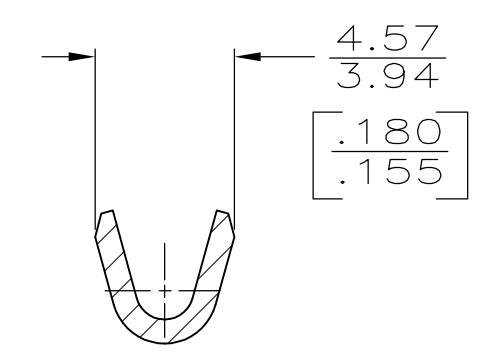


THIS DRAWING IS UNPUBLISHED. RELEASED FOR PUBLICATION
 © COPYRIGHT BY TYCO ELECTRONICS CORPORATION. ALL RIGHTS RESERVED.

LOC	DIST	REVISIONS					
AF	50	P	LTR	DESCRIPTION	DATE	DWN	APVD
			D	REVISED PER ECR-08-005248	06MAR08	HMR	GP



1 CONTINUOUS STRIP ON REEL.
 2 DIMENSION NOT TO EXCEED 1.01 [.040] AFTER 6 INSERTIONS OF A MATING BLADE.



0.00381 [.000150] MIN SILVER PLATE	[18-14] AWG	63863-2
0.00203 [.000080] MIN TIN PLATE	[18-14] AWG	63863-1
FINISH	WIRE RANGE	PART NO.

THIS DRAWING IS A CONTROLLED DOCUMENT.

DWN	20/JUL/95	Tyco Electronics	Tyco Electronics Corporation	
CHK	20/JUL/95		Harrisburg, PA 17105-3608	
APVD	20/JUL/95	NAME	RECEPTACLE, TWIST LOCK	
PRODUCT SPEC		SIZE	CAGE CODE	DRAWING NO
APPLICATION SPEC		A3	00779	C-63863
WEIGHT	-	RESTRICTED TO	-	
MATERIAL	FINISH	CUSTOMER DRAWING	SCALE	SHEET
H04 PHOS BRONZE	SEE TABLE		4:1	1 OF 1

REVISIONS: 1 CONTINUOUS STRIP ON REEL. 2 DIMENSION NOT TO EXCEED 1.01 [.040] AFTER 6 INSERTIONS OF A MATING BLADE.