



Chipsmall Limited consists of a professional team with an average of over 10 year of expertise in the distribution of electronic components. Based in Hongkong, we have already established firm and mutual-benefit business relationships with customers from,Europe,America and south Asia,supplying obsolete and hard-to-find components to meet their specific needs.

With the principle of “Quality Parts,Customers Priority,Honest Operation,and Considerate Service”,our business mainly focus on the distribution of electronic components. Line cards we deal with include Microchip,ALPS,ROHM,Xilinx,Pulse,ON,Everlight and Freescale. Main products comprise IC,Modules,Potentiometer,IC Socket,Relay,Connector.Our parts cover such applications as commercial,industrial, and automotives areas.

We are looking forward to setting up business relationship with you and hope to provide you with the best service and solution. Let us make a better world for our industry!



Contact us

Tel: +86-755-8981 8866 Fax: +86-755-8427 6832

Email & Skype: info@chipsmall.com Web: www.chipsmall.com

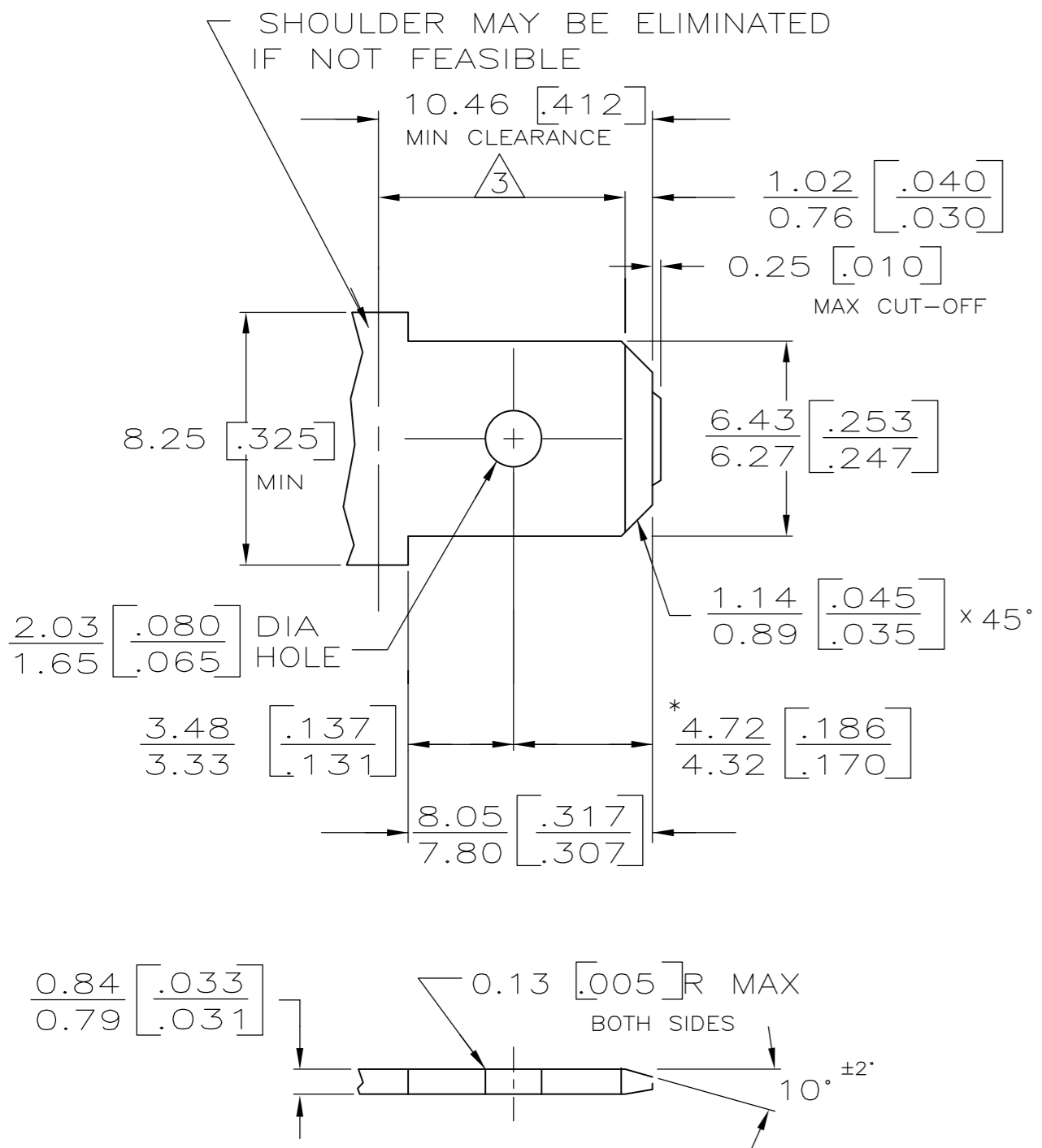
Address: A1208, Overseas Decoration Building, #122 Zhenhua RD., Futian, Shenzhen, China



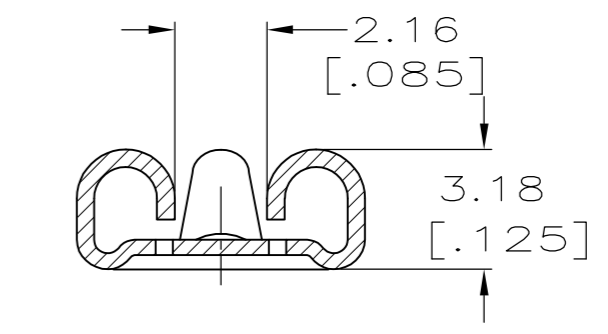
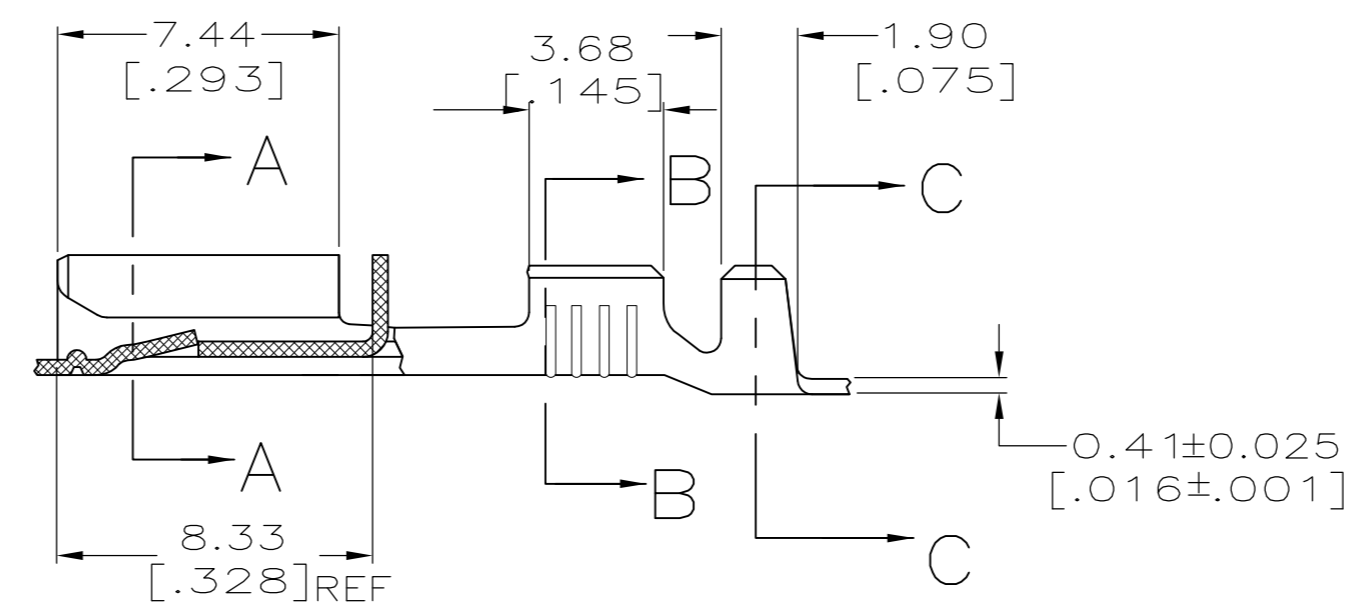
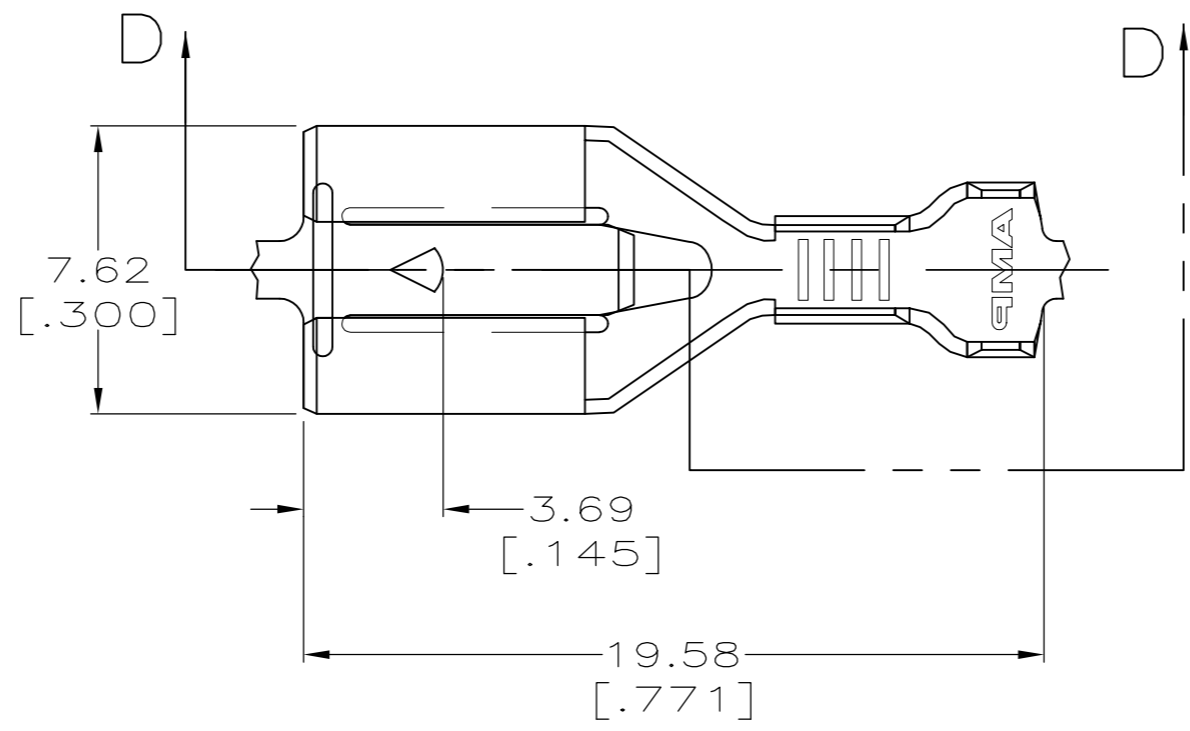
THIS DRAWING IS UNPUBLISHED. RELEASED FOR PUBLICATION
 © COPYRIGHT - By - ALL RIGHTS RESERVED.

LOC	DIST	REVISIONS			
P	LTR	DESCRIPTION	DATE	DWN	APVD
AF	50	H1	REVISED PER ECO-13-006421	12APR13	JR PD

SUGGESTED MATING TAB

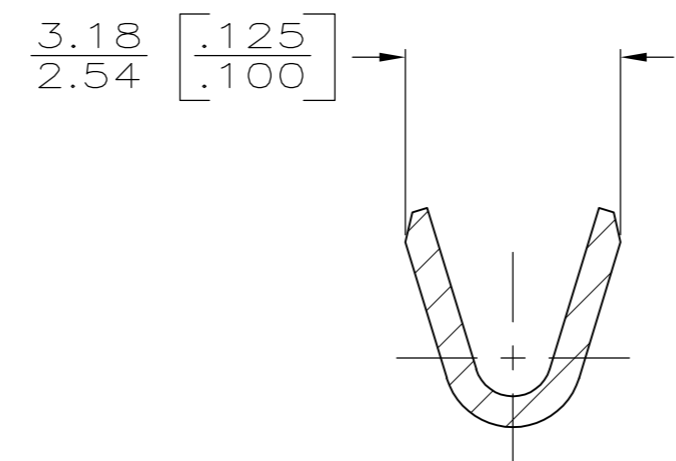


- MATL: 1/2H BRASS OR NICKEL PL STEEL.
 - NO BURRS PERMISSIBLE AT HOLE.
 - MUST BE FLAT WITHIN 0.076 [.003] OVER THIS LENGTH.
 - TIN PLATING IS REQUIRED ON BRASS WHEN TERMINAL TEMP. IS OVER 225°F, 105° C
 - HOLE MUST BE SYMMETRICAL ABOUT TAB Q̄ WITHIN 0.076 [.003]
- * TO BE USED ONLY WHEN SHOULDER IS ELIMINATED.

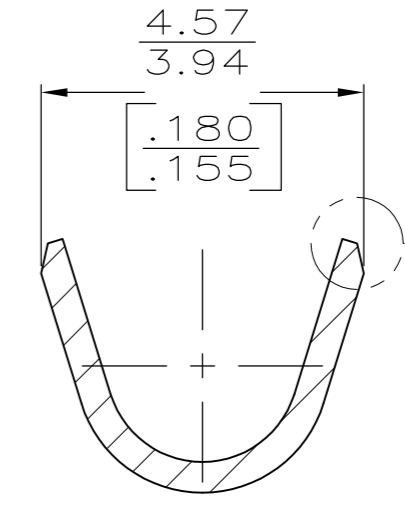


SECTION A-A

SECTION D-D



SECTION B-B



SECTION C-C

- CONTINUOUS STRIP ON REELS.
- PREPRODUCTION - FASR REQUIRED

PRE-TIN PL.	1.52-2.54 [.060-.100] DIA	[#22-#18] AWG	△ 63933-6
TIN PLATE	1.52-2.54 [.060-.100] DIA	[#22-#18] AWG	63933-2
-	1.52-2.54 [.060-.100] DIA	[#22-#18] AWG	63933-1
FINISH	INSULATION RANGE	WIRE SIZE	PART NO.
THIS DRAWING IS A CONTROLLED DOCUMENT.		DWN JR RUTH 9/4/96	
DIMENSIONS: mm [INCHES]		CHK MS FEHER 9/4/96	
TOLERANCES UNLESS OTHERWISE SPECIFIED:		APVD J GILLISPIE 9/4/96	
0 PLC ± - 1 PLC ± - 2 PLC ± 0.25 [.010] 3 PLC ± - 4 PLC ± - ANGLES ± -		NAME	
MATERIAL	FINISH	PRODUCT SPEC	RECEPTACLE, POSITIVE LOCK, 6.35 [.250] SERIES
BRASS	SEE TABLE	APPLICATION SPEC	SIZE CAGE CODE DRAWING NO RESTRICTED TO
		114-2061	A2 00779 C=63933
		WEIGHT	SCALE 5:1 SHEET 1 OF 1 REV H1
		CUSTOMER DRAWING	