



Chipsmall Limited consists of a professional team with an average of over 10 year of expertise in the distribution of electronic components. Based in Hongkong, we have already established firm and mutual-benefit business relationships with customers from,Europe,America and south Asia,supplying obsolete and hard-to-find components to meet their specific needs.

With the principle of “Quality Parts,Customers Priority,Honest Operation,and Considerate Service”,our business mainly focus on the distribution of electronic components. Line cards we deal with include Microchip,ALPS,ROHM,Xilinx,Pulse,ON,Everlight and Freescale. Main products comprise IC,Modules,Potentiometer,IC Socket,Relay,Connector.Our parts cover such applications as commercial,industrial, and automotives areas.

We are looking forward to setting up business relationship with you and hope to provide you with the best service and solution. Let us make a better world for our industry!



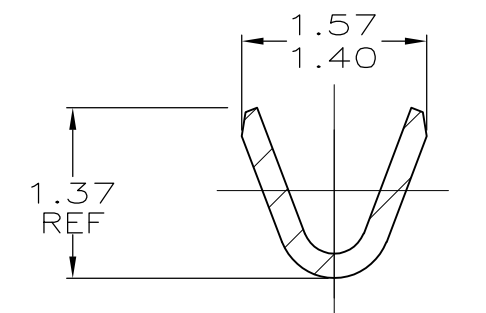
Contact us

Tel: +86-755-8981 8866 Fax: +86-755-8427 6832

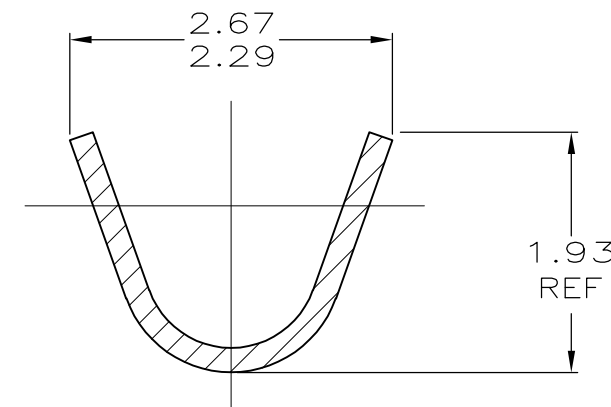
Email & Skype: info@chipsmall.com Web: www.chipsmall.com

Address: A1208, Overseas Decoration Building, #122 Zhenhua RD., Futian, Shenzhen, China

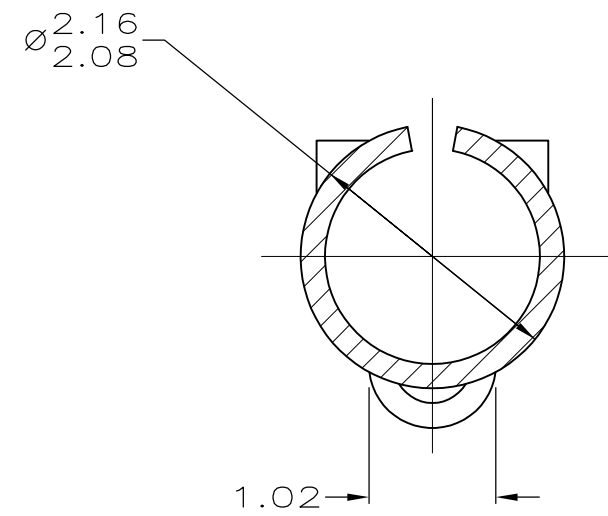




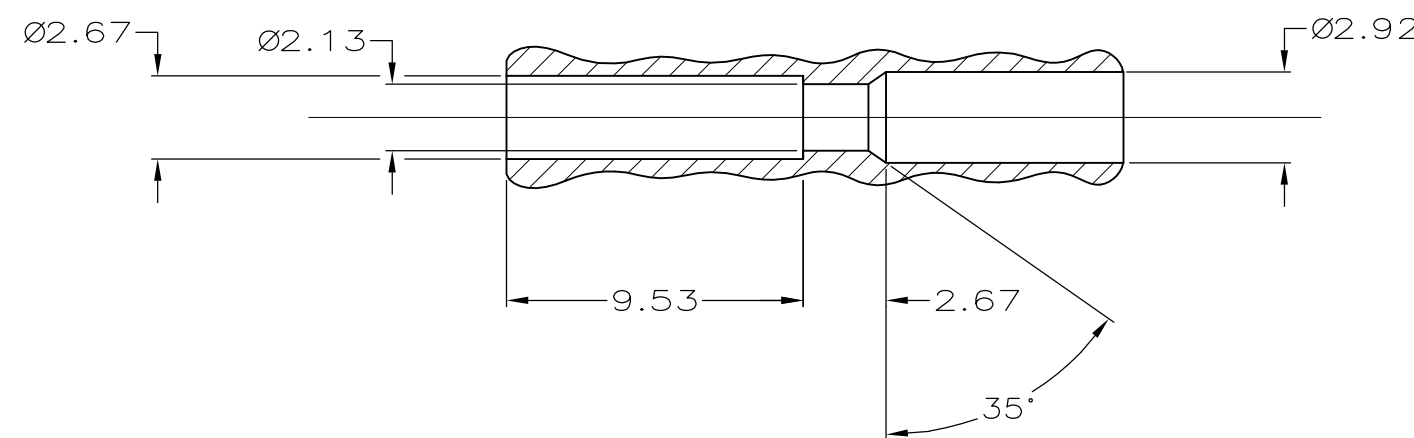
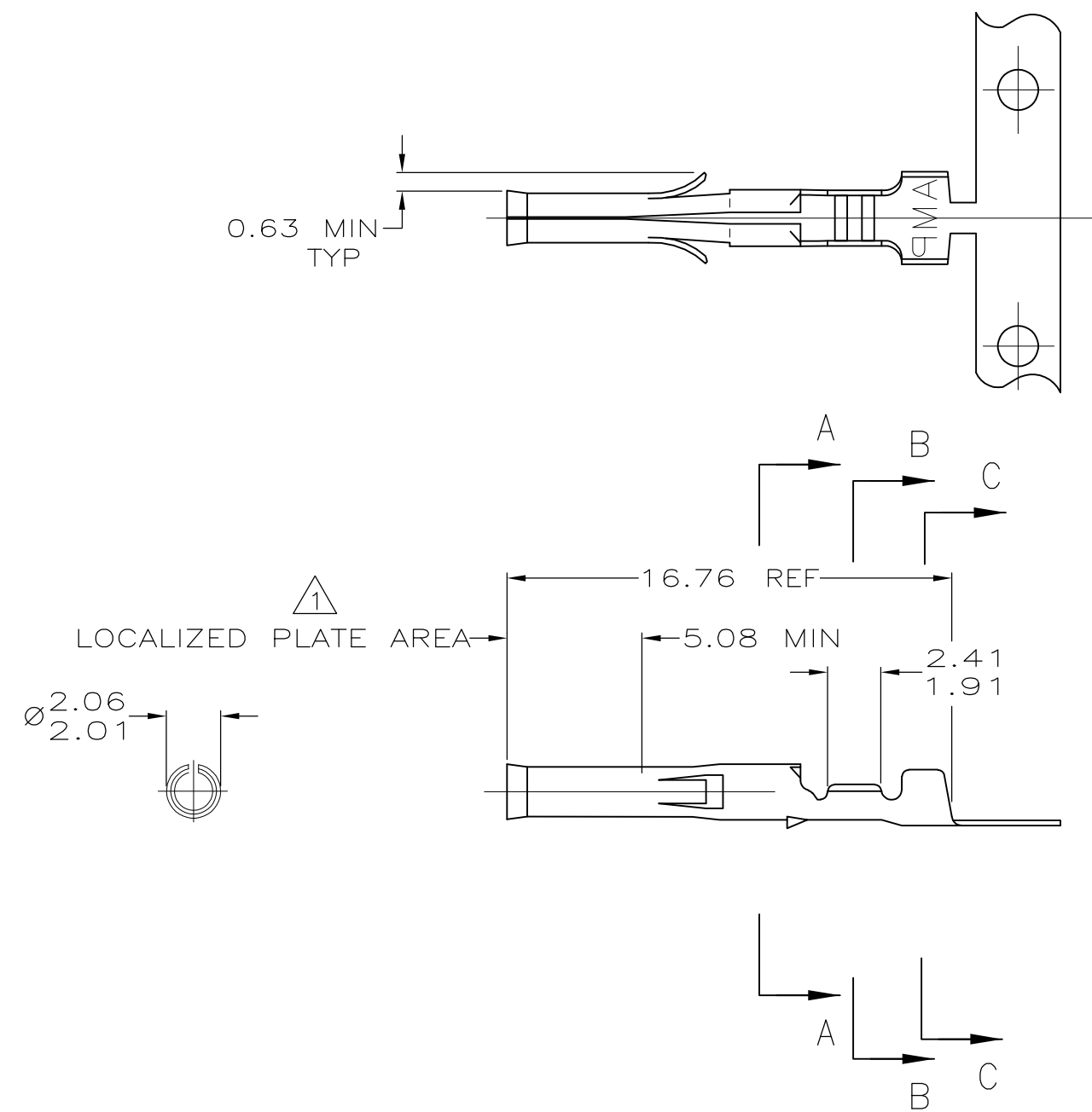
SECTION B-B
SCALE 20:1



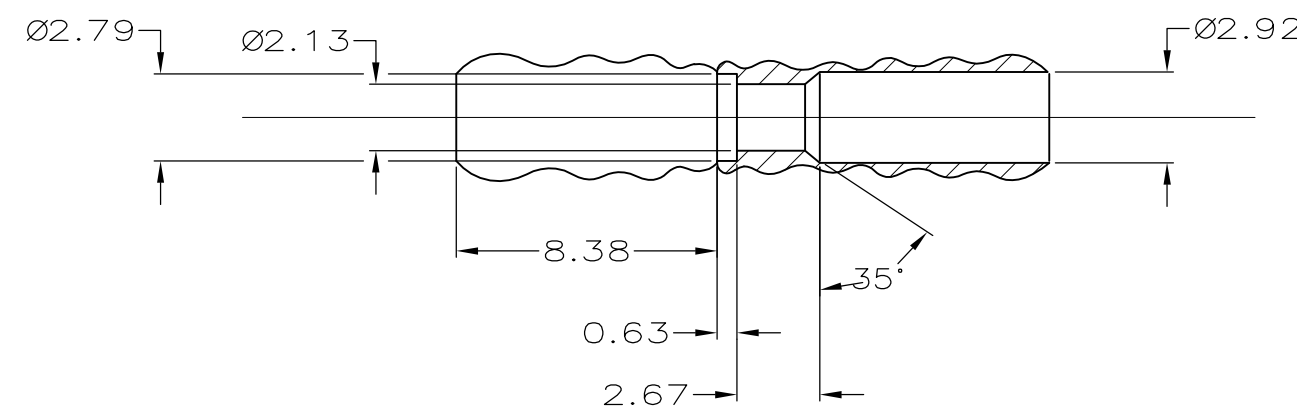
SECTION C-C
SCALE 20:1



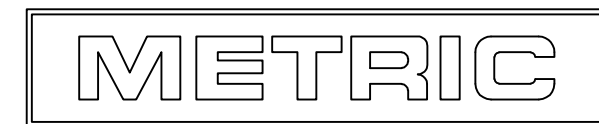
SECTION A-A
SCALE 20:1



TYPICAL RECEPTACLE CAVITY SECTION
REFERENCE

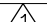




TYPICAL PLUG CAVITY SECTION
REFERENCE



1. 0.0013 MIN NICKEL OVER ENTIRE RECEPTACLE WITH 0.0008 MIN GOLD INSIDE RECEPTACLE IN LOCALIZED PLATE AREA.
2. EITHER CAVITY WILL ACCEPT RECEPTACLE 350628,640392 OR PIN 350629,640391.

.660	16.76
.375	9.53
.330	8.38
.200	5.08
.115	2.92
.110	2.79
.105	2.67
.095	2.41
.090	2.29
.085	2.16
.084	2.13
.082	2.08
.081	2.06
.079	2.01
.076	1.93
.075	1.91
.062	1.57
.060	1.52
.055	1.40
.054	1.37
.040	1.02
.025	0.63
.008	0.20
.005	0.13
.00050	0.0013
.000030	0.0008
IN	MM
CONVERSION	TABLE

	0.20 BRASS	1.52 MAX	30-24	640392-5
PRE-TIN	0.20 PH.BRZ.	1.52 MAX	30-24	640392-2
PRE-TIN	0.20 BRASS	1.52 MAX	30-24	640392-1
FINISH	MATERIAL	INSULATION DIAMETER	WIRE RANGE	PART NO
THIS DRAWING IS A CONTROLLED DOCUMENT.		DWN K. SALMON 9-30-91 CHK R. SWING 9-30-91 APP'D C. CASH 10-1-91	 TE Connectivity	
DIMENSIONS: mm[INCHES]	TO TOLERANCES UNLESS OTHERWISE SPECIFIED: 0 PLC ± 1 PLC ± 2 PLC ± 3 PLC ±0.13 4 PLC ± ANGLES ± 0° 30' FINISH	APPLICATOR SPEC PRODUCT SPEC APPLICATION SPEC — —	NAME .062 SOCKET COMMERCIAL PIN & SOCKET	
			SIZE A1	GAGE CODE 00779
MATERIAL SEE TABLE	MATERIAL SEE TABLE	WEIGHT —	DRAWING NO C-640392	RESTRICTED TO —
CUSTOMER DRAWING		SCALE 5:1 SHEET 1 OF 1 REV R		