



Chipsmall Limited consists of a professional team with an average of over 10 year of expertise in the distribution of electronic components. Based in Hongkong, we have already established firm and mutual-benefit business relationships with customers from,Europe,America and south Asia,supplying obsolete and hard-to-find components to meet their specific needs.

With the principle of “Quality Parts,Customers Priority,Honest Operation,and Considerate Service”,our business mainly focus on the distribution of electronic components. Line cards we deal with include Microchip,ALPS,ROHM,Xilinx,Pulse,ON,Everlight and Freescale. Main products comprise IC,Modules,Potentiometer,IC Socket,Relay,Connector.Our parts cover such applications as commercial,industrial, and automotives areas.

We are looking forward to setting up business relationship with you and hope to provide you with the best service and solution. Let us make a better world for our industry!



Contact us

Tel: +86-755-8981 8866 Fax: +86-755-8427 6832

Email & Skype: info@chipsmall.com Web: www.chipsmall.com

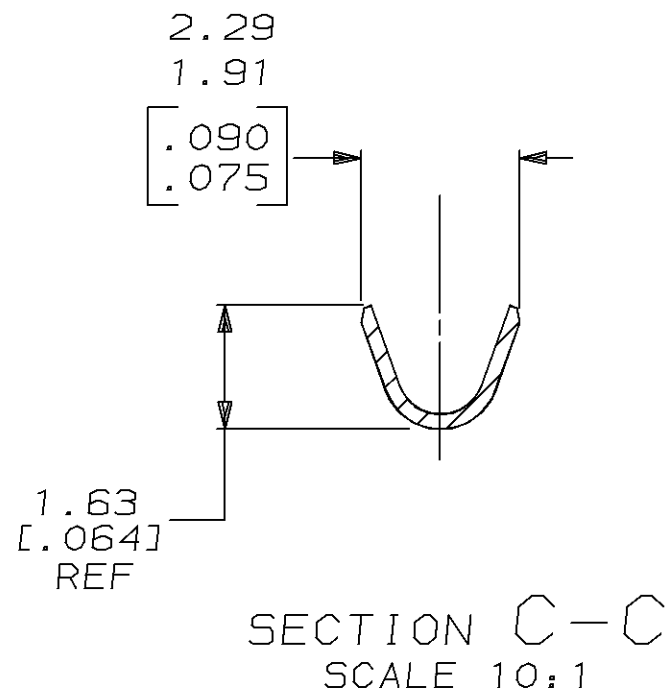
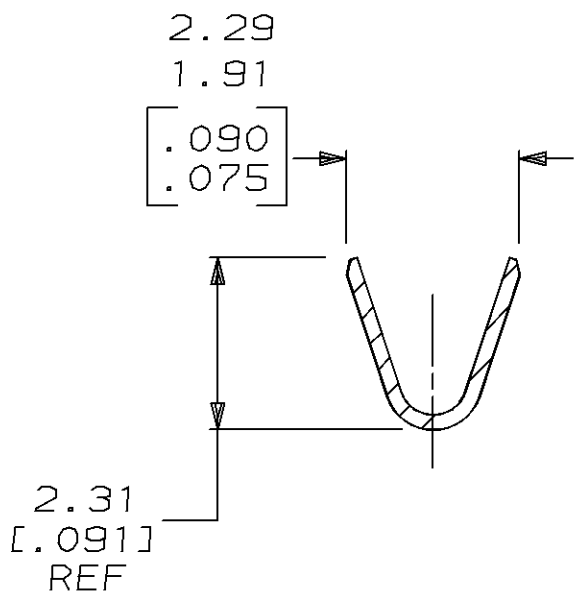
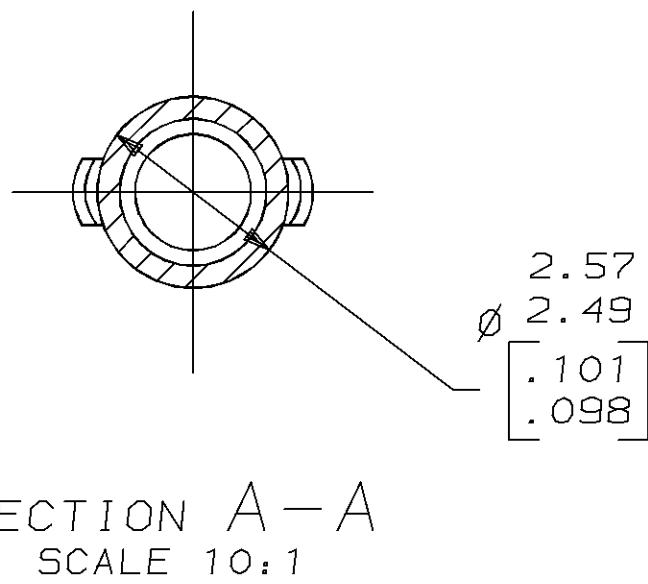
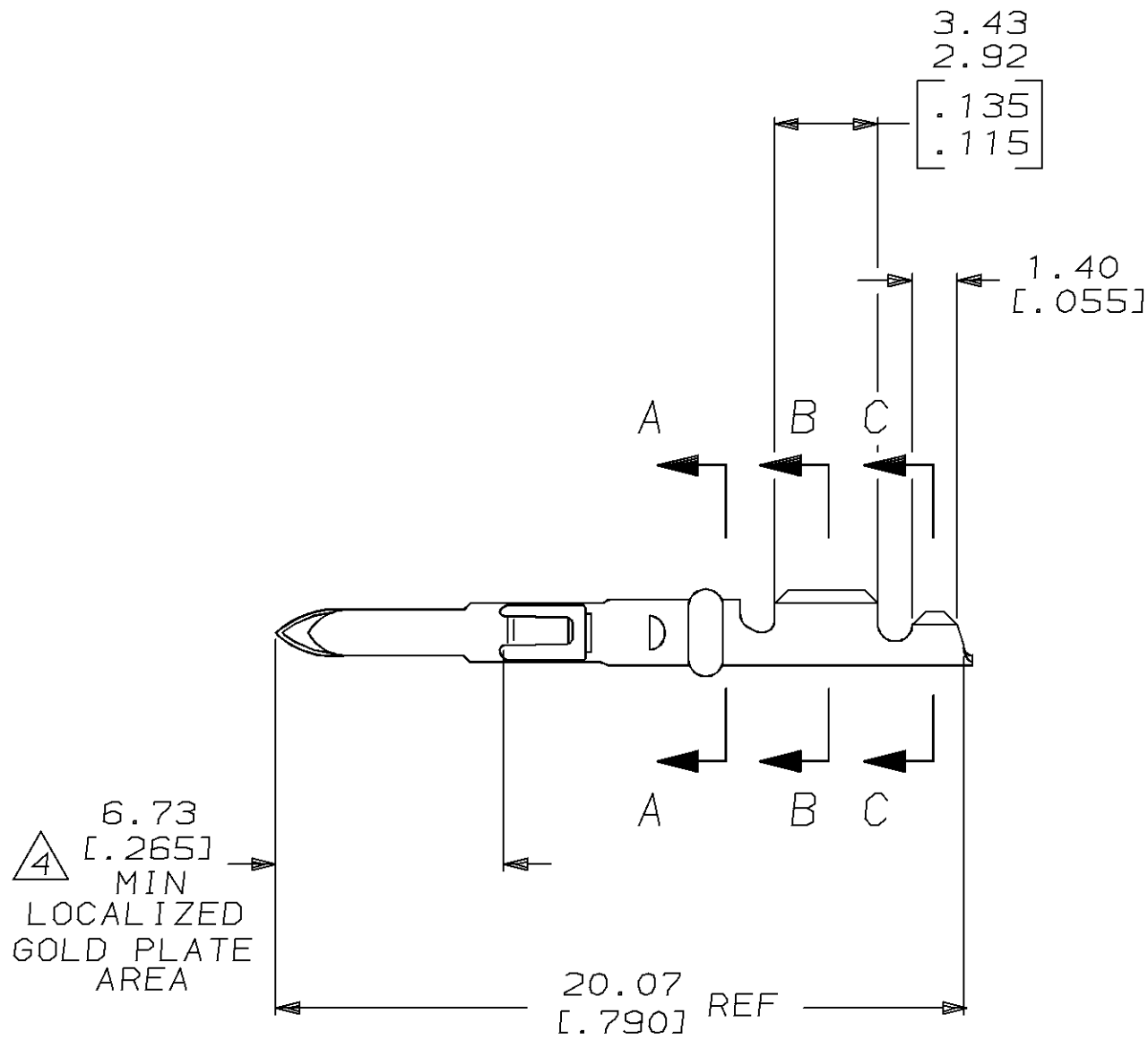
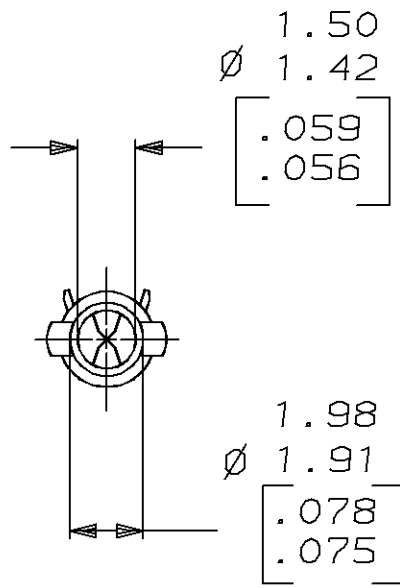
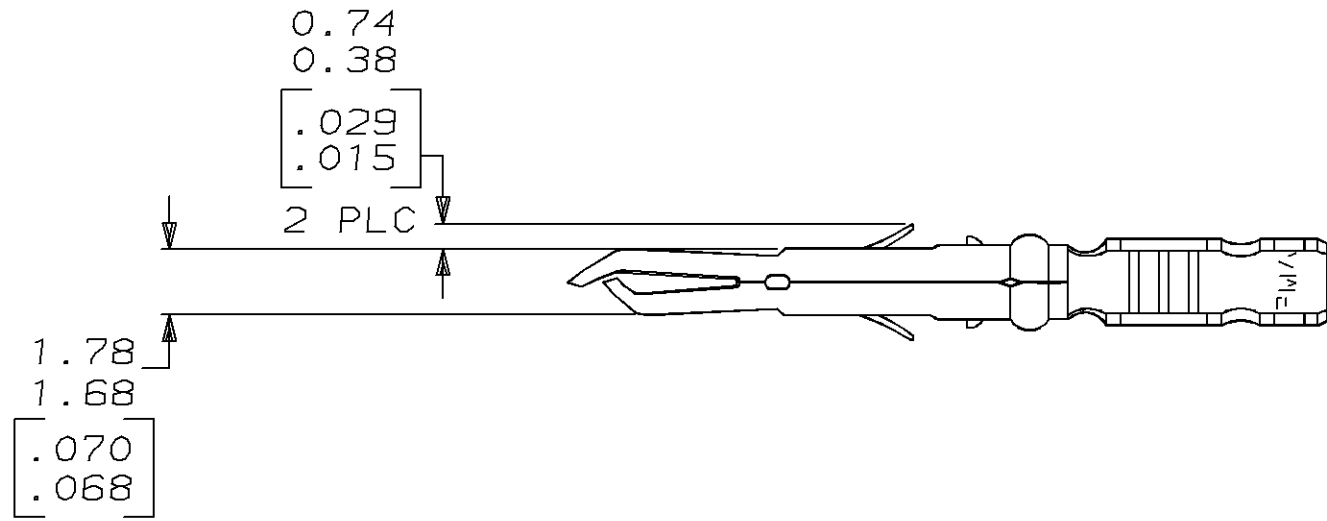
Address: A1208, Overseas Decoration Building, #122 Zhenhua RD., Futian, Shenzhen, China



LOC		DIST		P		F		ZONE		LTR		REVISIONS		DATE		APPD	
CM		52										C	REV & REDWN PER EC 0730-0059-95	3-21-95	K5	RS	

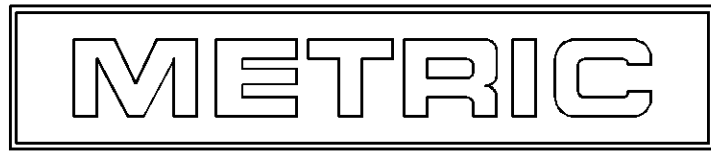
- 1 WIRE RANGE: 0.13-0.2mm² (26-24 AWG).
- 2 INSULATION RANGE: 0.64-1.27 [.025-.050] MAX. DIA.
- 3 DIMENSIONS IN BRACKETS ARE IN INCHES.
- 4

TIP PLATE WITH 0.00076-0.00091 [.000030-.000036] MIN GOLD IN THE LOCALIZED GOLD PLATE AREA OVER 0.00127 [.000050] MIN NICKEL UNDERPLATE.



<div>4</div> GOLD PLATE	0.20 [.008] PH05 BRZ	640579-2
PRE-TIN	0.20 [.008] PH05 BRZ	640579-1
FINISH	MATERIAL	PART NO

DO NOT SCALE PRINT. UNLESS SPECIFIED DIMENSIONS IN mm [INCHES] TOLERANCES: ON: 2 PLC DEC ±0.13 [.005] 3 PLC DEC ±- ANGLES ± -	DR 3-21-95 K. SALMON	<div><div>AMP</div><div>AMP Incorporated</div><div>Harrisburg, PA 17105-3608</div></div>		
	CHK 3-21-95 R. SWING			
	APPD 3-21-95 W. LONG	NAME		
MATERIAL	APPD 3-21-95 W. LONG	PIN, LOOSE PIECE, MR		
SEE TABLE	PRODUCT SPEC -			
FINISH	APPLICATION SPEC -	SIZE	CAGE CODE	DRAWING NO
SEE TABLE	-	D	00779	C-640579
WEIGHT -	-	SCALE	5:1	SHEET 1 OF 1



THIS DRAWING IS A CONTROLLED DOCUMENT FOR AMP INCORPORATED. IT IS SUBJECT TO CHANGE AND THE CONTROLLING ENGINEERING ORGANIZATION SHOULD BE CONTACTED FOR THE LATEST REVISION.