



Chipsmall Limited consists of a professional team with an average of over 10 year of expertise in the distribution of electronic components. Based in Hongkong, we have already established firm and mutual-benefit business relationships with customers from,Europe,America and south Asia,supplying obsolete and hard-to-find components to meet their specific needs.

With the principle of “Quality Parts,Customers Priority,Honest Operation,and Considerate Service”,our business mainly focus on the distribution of electronic components. Line cards we deal with include Microchip,ALPS,ROHM,Xilinx,Pulse,ON,Everlight and Freescale. Main products comprise IC,Modules,Potentiometer,IC Socket,Relay,Connector.Our parts cover such applications as commercial,industrial, and automotives areas.

We are looking forward to setting up business relationship with you and hope to provide you with the best service and solution. Let us make a better world for our industry!



Contact us

Tel: +86-755-8981 8866 Fax: +86-755-8427 6832

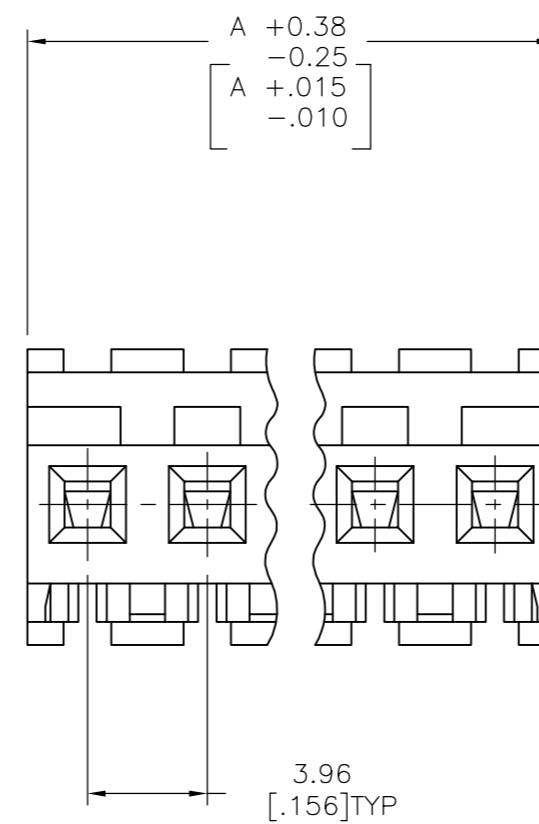
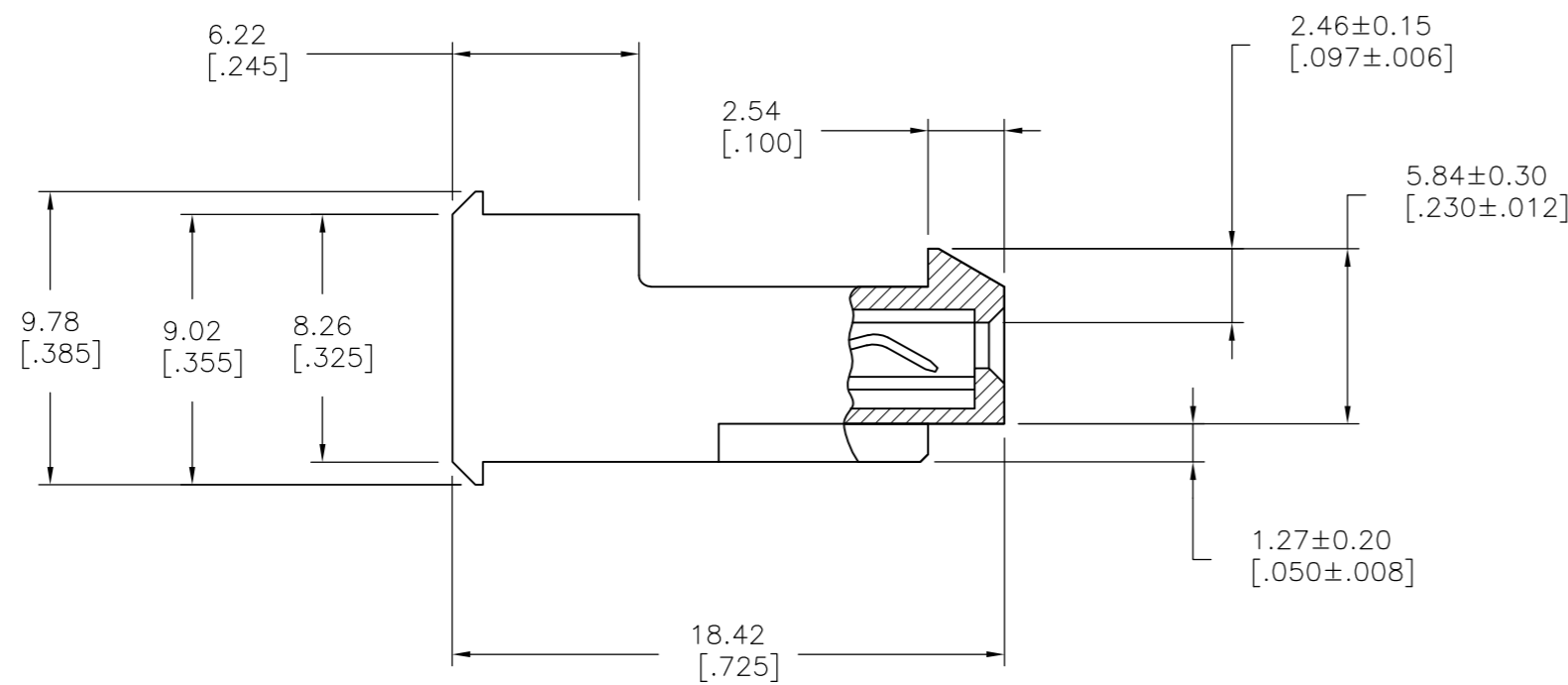
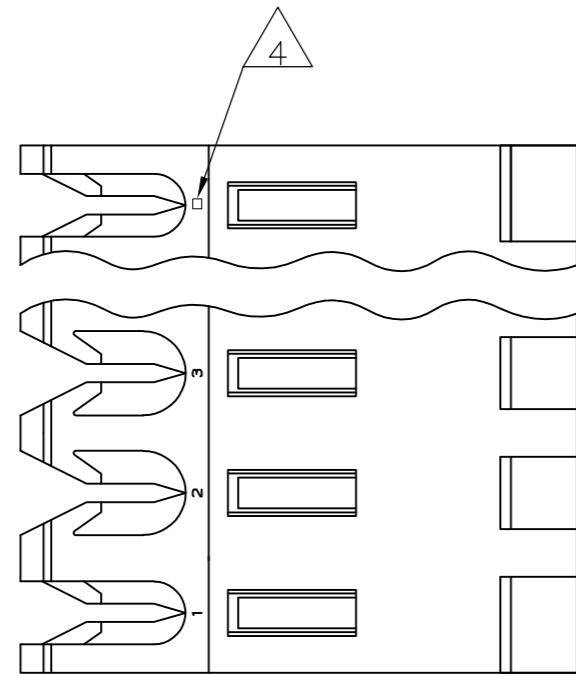
Email & Skype: info@chipsmall.com Web: www.chipsmall.com

Address: A1208, Overseas Decoration Building, #122 Zhenhua RD., Futian, Shenzhen, China



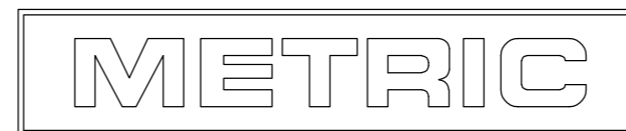
THIS DRAWING IS UNPUBLISHED. RELEASED FOR PUBLICATION
 © COPYRIGHT - By - ALL RIGHTS RESERVED.

LOC	DIST	REVISIONS					
CM	00	P	LTR	DESCRIPTION	DATE	DWN	APVD
		T		REVISED PER ECO-12-007611	03AUG12	KH	SM



95.10[3.744]	24	5-640599-4	
91.13[3.588]	23	5-640599-3	
87.17[3.432]	22	5-640599-2	
83.21[3.276]	21	5-640599-1	
79.25[3.120]	20	5-640599-0	
75.29[2.964]	19	4-640599-9	
71.32[2.808]	18	4-640599-8	
67.36[2.652]	17	4-640599-7	
63.40[2.496]	16	4-640599-6	
59.44[2.340]	15	4-640599-5	
55.47[2.184]	14	4-640599-4	
51.51[2.028]	13	4-640599-3	
47.55[1.872]	12	4-640599-2	
43.59[1.716]	11	4-640599-1	
39.62[1.560]	10	4-640599-0	
35.66[1.404]	9	3-640599-9	
31.70[1.248]	8	3-640599-8	
27.74[1.092]	7	3-640599-7	
23.77[.936]	6	3-640599-6	
19.81[.780]	5	3-640599-5	
15.85[.624]	4	3-640599-4	
11.89[.468]	3	3-640599-3	
7.92[.312]	2	3-640599-2	
△ SUPERSEDED BY 5-640599-4	95.10[3.744]	24	2-640599-4
△ SUPERSEDED BY 5-640599-3	91.13[3.588]	23	2-640599-3
△ SUPERSEDED BY 5-640599-2	87.17[3.432]	22	2-640599-2
△ SUPERSEDED BY 5-640599-1	83.21[3.276]	21	2-640599-1
△ SUPERSEDED BY 5-640599-0	79.25[3.120]	20	2-640599-0
△ SUPERSEDED BY 4-640599-9	75.29[2.964]	19	1-640599-9
	71.32[2.808]	18	1-640599-8
	67.36[2.652]	17	1-640599-7
	63.40[2.496]	16	1-640599-6
	59.44[2.340]	15	1-640599-5
△ SUPERSEDED BY 4-640599-4	55.47[2.184]	14	1-640599-4
	51.51[2.028]	13	1-640599-3
	47.55[1.872]	12	1-640599-2
	43.59[1.716]	11	1-640599-1
	39.62[1.560]	10	1-640599-0
	35.66[1.404]	9	640599-9
	31.70[1.248]	8	640599-8
	27.74[1.092]	7	640599-7
	23.77[.936]	6	640599-6
	19.81[.780]	5	640599-5
	15.85[.624]	4	640599-4
	11.89[.468]	3	640599-3
	7.92[.312]	2	640599-2
	DIM A	NO OF CIRCUITS	PART NO.

- 1 MATERIAL: CONNECTOR - NYLON UL94-V2
CONTACTS - 0.30[.012] THICK COPPER ALLOY
(BRIGHT TIN-LEAD 0.00203[.000080] MIN. THICK
FOR CONTACTS 640599-2 THRU 2-640599-4]
(MATTE WHISKER MITIGATED TIN 0.00203[.000080] MIN
THICKNESS OVER NICKEL UNDERPLATE FOR
3-640599-2 THRU 5-640599-4).
- 2 CONTACTS ACCEPT 18 AWG WIRE WITH 2.41[.095] MAX INSULATION DIAMETER.
- 3 CONTACTS MUST ACCEPT 1.14±0.03[.045±.001] SQUARE POST AND REMAIN LOCKED IN POSITION.
- 4 IDENTIFICATION NUMBER FOR LAST CIRCUIT MAY NOT APPEAR ON ALL ASSEMBLIES.
- 5 DIMENSIONS IN BRACKETS ARE IN INCHES.
- 6 HOUSING FEATURES ARE: FEED-THRU WITH LOCKING RAMP.
- 7 OBSOLETE PARTS: OBSOLETE CIS STREAMLINING PER D.RENAUD/D.SINISI
- 8 ORANGE COLOR STRIPE ON HOUSING (NOT SHOWN) MAY RUN DOWN BETWEEN RIBS



THIS DRAWING IS A CONTROLLED DOCUMENT.		DWN S.CARPENTER 09JUL2003		
DIMENSIONS: mm [INCHES]		CHK D BOSSI 09JUL2003		
TOLERANCES UNLESS OTHERWISE SPECIFIED:		APVD D BOSSI 09JUL2003	NAME MTA-156 CONNECTOR ASSEMBLY, 18 AWG, STANDARD	
0 PLC ± - 1 PLC ± - 2 PLC ± - 3 PLC ± 0.13 [.005] 4 PLC ± -		PRODUCT SPEC 108-1051	RESTRICTED TO	
MATERIAL		APPLICATION SPEC 114-1020	SIZE A2	CAGE CODE 00779
FINISH		WEIGHT -	DRAWING NO C-640599	SCALE 4:1
1		CUSTOMER DRAWING		SHEET 1 OF 1
1		REV T		