



Chipsmall Limited consists of a professional team with an average of over 10 year of expertise in the distribution of electronic components. Based in Hongkong, we have already established firm and mutual-benefit business relationships with customers from,Europe,America and south Asia,supplying obsolete and hard-to-find components to meet their specific needs.

With the principle of “Quality Parts,Customers Priority,Honest Operation,and Considerate Service”,our business mainly focus on the distribution of electronic components. Line cards we deal with include Microchip,ALPS,ROHM,Xilinx,Pulse,ON,Everlight and Freescale. Main products comprise IC,Modules,Potentiometer,IC Socket,Relay,Connector.Our parts cover such applications as commercial,industrial, and automotives areas.

We are looking forward to setting up business relationship with you and hope to provide you with the best service and solution. Let us make a better world for our industry!



Contact us

Tel: +86-755-8981 8866 Fax: +86-755-8427 6832

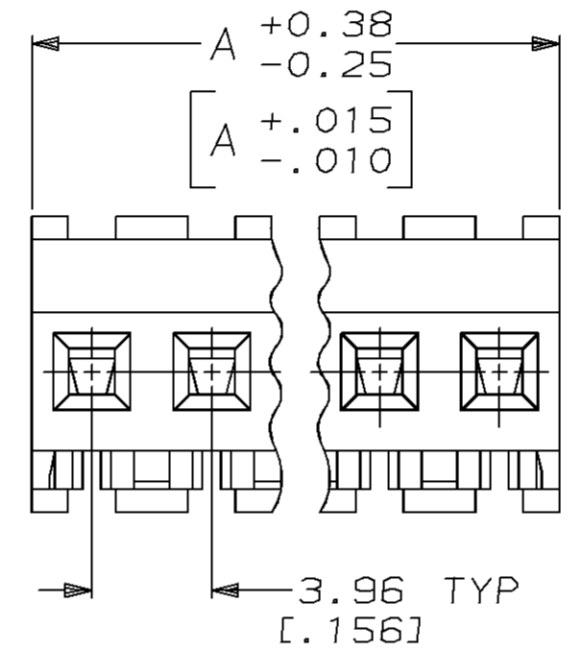
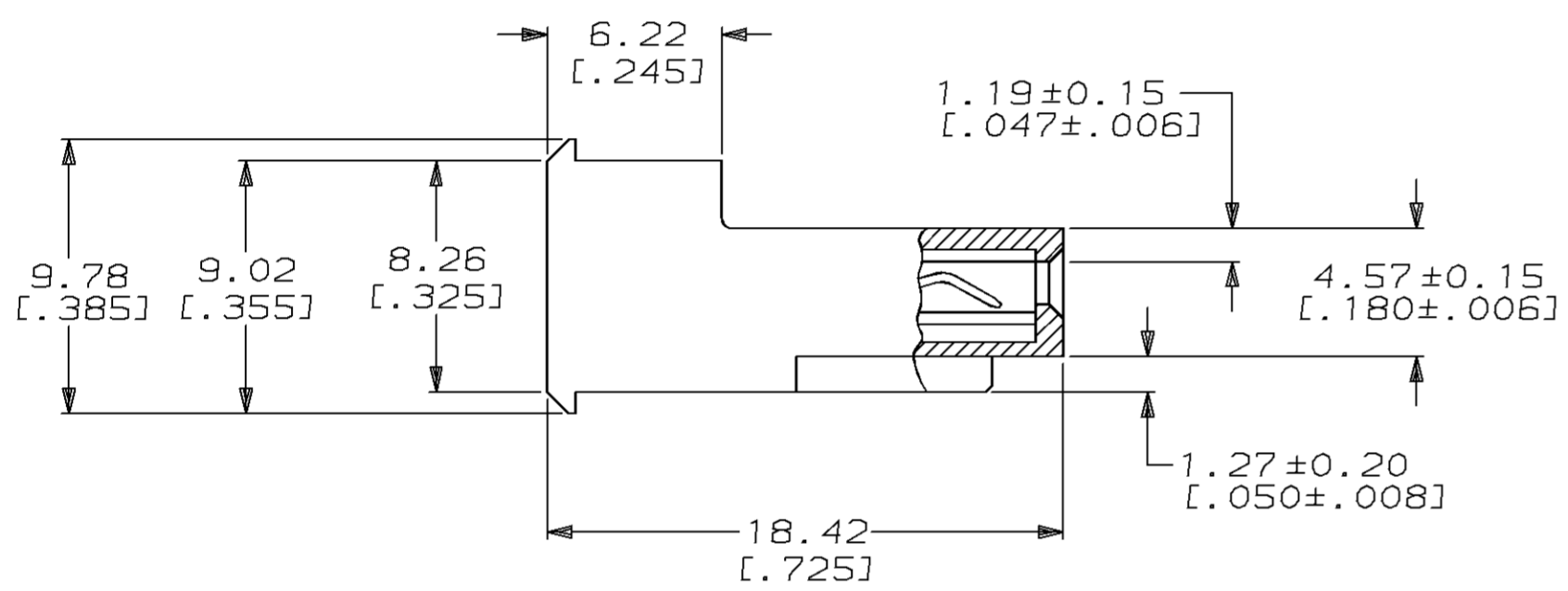
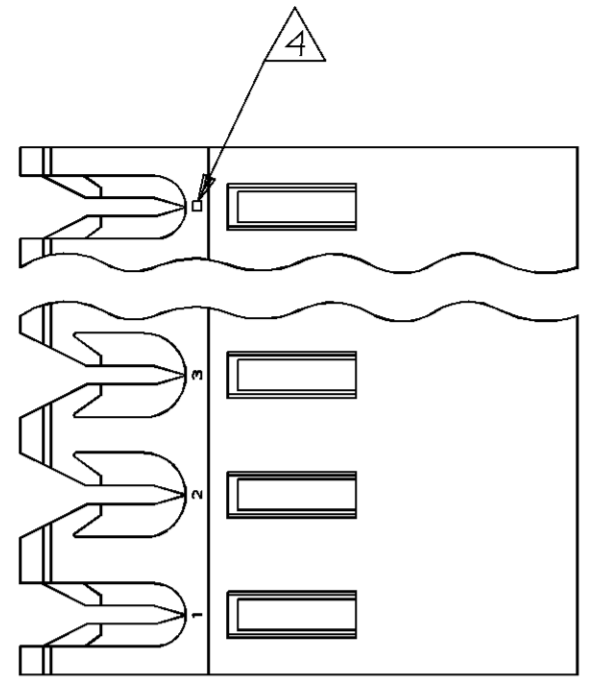
Email & Skype: info@chipsmall.com Web: www.chipsmall.com

Address: A1208, Overseas Decoration Building, #122 Zhenhua RD., Futian, Shenzhen, China



THIS DRAWING IS UNPUBLISHED. RELEASED FOR PUBLICATION, 19 .
 © COPYRIGHT 19 BY AMP INCORPORATED. ALL INTERNATIONAL RIGHTS RESERVED.

LOC	DIST	P	F	ZONE	LTR	REVISIONS	DATE	APPD
CM	54				K	REACT -2 THRU -24 AND REV PER EC 0730-0242-95	3-06-96	BL RS



95.10	[3.744]	24	2-640608-4
91.14	[3.588]	23	2-640608-3
87.17	[3.432]	22	2-640608-2
83.21	[3.276]	21	2-640608-1
79.25	[3.120]	20	2-640608-0
75.29	[2.964]	19	1-640608-9
71.32	[2.808]	18	1-640608-8
67.36	[2.652]	17	1-640608-7
63.40	[2.496]	16	1-640608-6
59.44	[2.340]	15	1-640608-5
55.47	[2.184]	14	1-640608-4
51.51	[2.028]	13	1-640608-3
47.55	[1.872]	12	1-640608-2
43.59	[1.716]	11	1-640608-1
39.62	[1.560]	10	1-640608-0
35.66	[1.404]	9	640608-9
31.70	[1.248]	8	640608-8
27.74	[1.092]	7	640608-7
23.77	[.936]	6	640608-6
19.81	[.780]	5	640608-5
15.85	[.624]	4	640608-4
11.89	[.468]	3	640608-3
7.92	[.312]	2	640608-2

- 1 MATERIAL: CONNECTOR - NYLON UL94V-2 (BLUE).
CONTACTS - 0.30[.012] THICK COPPER ALLOY
(BRIGHT-TIN 0.00203 [.000080] MIN THK)
- 2. CONTACTS ACCEPT 26 AWG WIRE WITH 2.41[.095] MAX INSULATION DIAMETER.
- 3. CONTACTS MUST ACCEPT 1.14±0.03[.045±.001] SQUARE POST AND REMAIN LOCKED IN POSITION.
- 4 IDENTIFICATION NUMBER FOR LAST CIRCUIT MAY NOT APPEAR ON ALL ASSEMBLIES.
- 5. DIMENSIONS IN BRACKETS ARE IN INCHES.
- 6. HOUSING FEATURES ARE: FEED-THRU WITHOUT LOCKING RAMP.

DO NOT SCALE PRINT. UNLESS SPECIFIED DIMENSIONS IN mm [INCHES] TOLERANCES ON : 2 PLC DEC ± - 3 PLC DEC ± 0.13 [.005] ANGLES ± -		DR 3-6-96 B. LEWIS		AMP AMP Incorporated Harrisburg, PA 17105-3608	
MATERIAL		CHK 3-6-96 R. SWING			
FINISH		APPD 3-6-96 D. CLARK		NAME MTA-156 CONNECTOR ASSEMBLY, 26 AWG, STANDARD	
<div style="border: 2px solid black; padding: 5px; display: inline-block; font-weight: bold; font-size: 1.2em;">METRIC</div>		APPD 3-6-96 D. CLARK		SIZE CAGE CODE DRAWING NO C 00779 640608	
		PRODUCT SPEC 108-1051		SCALE 4:1 SHEET 1 OF 1	
		APPLICATION SPEC 114-1020			
		WEIGHT -			