



Chipsmall Limited consists of a professional team with an average of over 10 year of expertise in the distribution of electronic components. Based in Hongkong, we have already established firm and mutual-benefit business relationships with customers from,Europe,America and south Asia,supplying obsolete and hard-to-find components to meet their specific needs.

With the principle of “Quality Parts,Customers Priority,Honest Operation,and Considerate Service”,our business mainly focus on the distribution of electronic components. Line cards we deal with include Microchip,ALPS,ROHM,Xilinx,Pulse,ON,Everlight and Freescale. Main products comprise IC,Modules,Potentiometer,IC Socket,Relay,Connector.Our parts cover such applications as commercial,industrial, and automotives areas.

We are looking forward to setting up business relationship with you and hope to provide you with the best service and solution. Let us make a better world for our industry!



Contact us

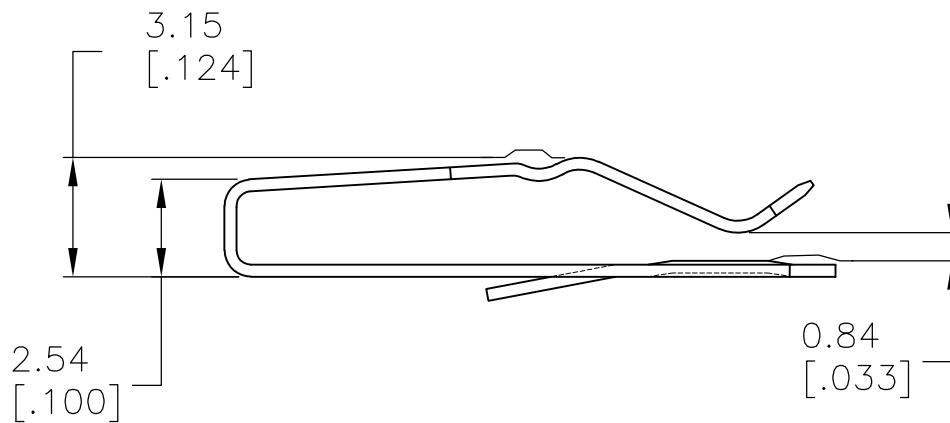
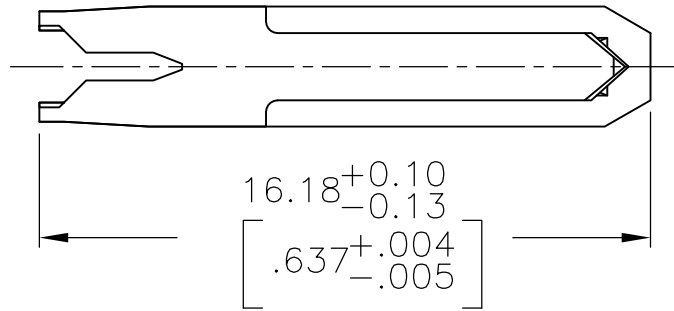
Tel: +86-755-8981 8866 Fax: +86-755-8427 6832

Email & Skype: info@chipsmall.com Web: www.chipsmall.com

Address: A1208, Overseas Decoration Building, #122 Zhenhua RD., Futian, Shenzhen, China



LOC	DIST	REVISIONS					
CM	00	P	LTR	DESCRIPTION	DATE	DWN	APVD
			G	ECO-07-025576	29OCT07	KW	DB



TIN	640631-3
FINISH	PART NO

MATERIAL
0.3 (.012) THK
COPPER ALLOY

FINISH
MATTE TIN 0.00203(.000080)
MIN THK

METRIC

DIMENSIONS: mm [INCHES]	DWN BSV	25OCT2005	MATERIAL	FINISH
TOLERANCES UNLESS OTHERWISE SPECIFIED:	CHK D. BOSSI	25OCT2005	Tyco Electronics Corporation Harrisburg, PA 17105-3608	
0 PLC ± -	APVD D. BOSSI	25OCT2005	NAME CONTACT, 18 AWG WIRE, LOOSE PIECE, MTA 156	
1 PLC ± -	PRODUCT SPEC		SIZE	CAGE CODE
2 PLC ± -	APPLICATION SPEC		DRAWING NO	RESTRICTED TO
3 PLC ± .005			A4	00779
4 PLC ± -	WEIGHT		C-640631	
ANGLES ± -			SCALE	SHEET
	CUSTOMER DRAWING		5:1	1 OF 1
			REV	G