



Chipsmall Limited consists of a professional team with an average of over 10 year of expertise in the distribution of electronic components. Based in Hongkong, we have already established firm and mutual-benefit business relationships with customers from,Europe,America and south Asia,supplying obsolete and hard-to-find components to meet their specific needs.

With the principle of “Quality Parts,Customers Priority,Honest Operation,and Considerate Service”,our business mainly focus on the distribution of electronic components. Line cards we deal with include Microchip,ALPS,ROHM,Xilinx,Pulse,ON,Everlight and Freescale. Main products comprise IC,Modules,Potentiometer,IC Socket,Relay,Connector.Our parts cover such applications as commercial,industrial, and automotives areas.

We are looking forward to setting up business relationship with you and hope to provide you with the best service and solution. Let us make a better world for our industry!



## Contact us

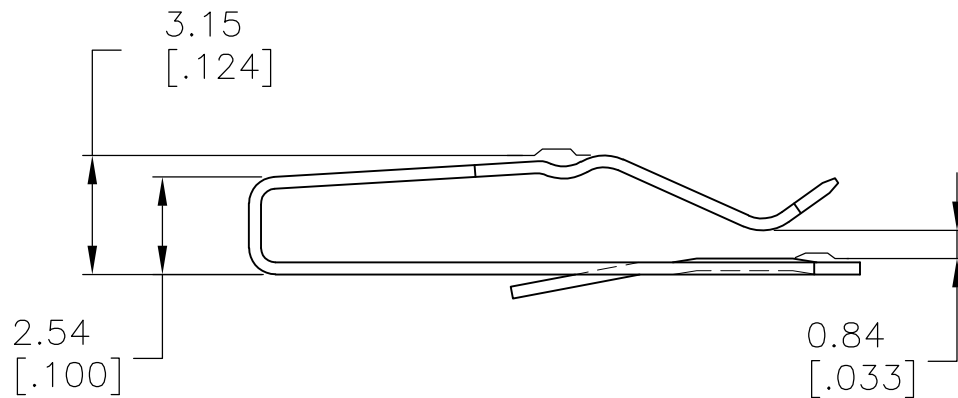
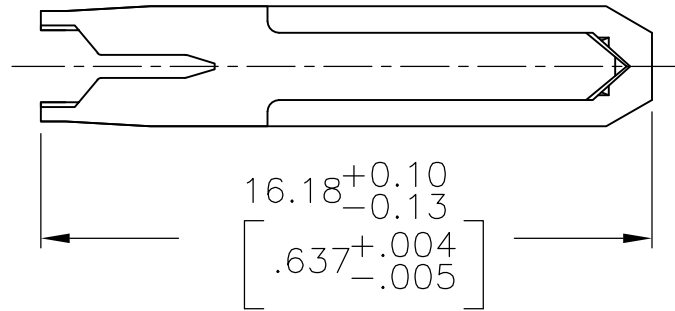
Tel: +86-755-8981 8866 Fax: +86-755-8427 6832

Email & Skype: [info@chipsmall.com](mailto:info@chipsmall.com) Web: [www.chipsmall.com](http://www.chipsmall.com)

Address: A1208, Overseas Decoration Building, #122 Zhenhua RD., Futian, Shenzhen, China



LOC	DIST	REVISIONS				
CM	00	P	LTR	DESCRIPTION	DATE	APVD
			G	ECO-07-025576	31OCT07	KW DB




TIN	640633-3
FINISH	PART NO

MATERIAL  
0.3 (.012) THK  
COPPER ALLOY

FINISH  
MATTE TIN 0.00203(.000080)  
MIN THK

**METRIC**

DIMENSIONS: mm [INCHES]		DWN BSV	25OCT2005	MATERIAL	—	FINISH	—
TOLERANCES UNLESS OTHERWISE SPECIFIED:		CHK D. BOSSI	25OCT2005	 Tyco Electronics Corporation Harrisburg, PA 17105-3608			
		APVD D. BOSSI	25OCT2005				
		PRODUCT SPEC	—	NAME CONTACT, 22 AWG WIRE, LOOSE PIECE, MTA 156			
0 PLC ± —		APPLICATION SPEC	—	SIZE	CAGE CODE	DRAWING NO	RESTRICTED TO
1 PLC ± —		WEIGHT	—	A4	00779	C-640633	—
2 PLC ± —		CUSTOMER DRAWING					
3 PLC ± .13 (.005)		SCALE 5:1					
4 PLC ± —		SHEET 1 OF 1					
ANGLES ± —		REV G					

