



Chipsmall Limited consists of a professional team with an average of over 10 year of expertise in the distribution of electronic components. Based in Hongkong, we have already established firm and mutual-benefit business relationships with customers from,Europe,America and south Asia,supplying obsolete and hard-to-find components to meet their specific needs.

With the principle of “Quality Parts,Customers Priority,Honest Operation,and Considerate Service”,our business mainly focus on the distribution of electronic components. Line cards we deal with include Microchip,ALPS,ROHM,Xilinx,Pulse,ON,Everlight and Freescale. Main products comprise IC,Modules,Potentiometer,IC Socket,Relay,Connector.Our parts cover such applications as commercial,industrial, and automotives areas.

We are looking forward to setting up business relationship with you and hope to provide you with the best service and solution. Let us make a better world for our industry!



Contact us

Tel: +86-755-8981 8866 Fax: +86-755-8427 6832

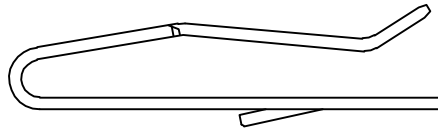
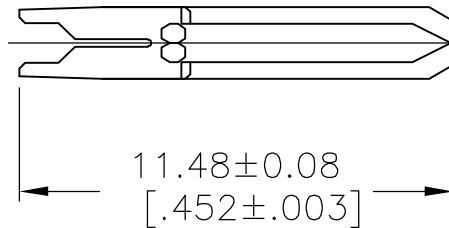
Email & Skype: info@chipsmall.com Web: www.chipsmall.com

Address: A1208, Overseas Decoration Building, #122 Zhenhua RD., Futian, Shenzhen, China



LOC	DIST	REVISIONS					
CM	00	P	LTR	DESCRIPTION	DATE	DWN	APVD
			L	REVISED PER ECO-07-007260	09APR07	KW	DB

DIMENSION IN BRACKET ARE IN INCHES.

**METRIC**

TIN	640639-2
TIN-LEAD	640639-1
FINISH	PART NO

DIMENSIONS: mm [INCHES]	DWN BSV	25OCT2005	MATERIAL 0.30[.012] THK COPPER ALLOY	FINISH MATTE TIN OR BRIGHT TIN LEAD 0.00203[.000080] MIN THK
	CHK D. BOSSI	25OCT2005	tyco Electronics Tyco Electronics Corporation Harrisburg, PA 17105-3608	
TOLERANCES UNLESS OTHERWISE SPECIFIED:	APVD D. BOSSI	25OCT2005		
0 PLC ± -	PRODUCT SPEC	NAME CONTACT, LOOSE PIECE, 28 AWG WIRE, MTA-100		
1 PLC ± -	—			
2 PLC ± -	APPLICATION SPEC	SIZE A4		
3 PLC ± -	—			
4 PLC ± -	—	CAGE CODE 00779	DRAWING NO C-640639	RESTRICTED TO —
ANGLES ± -	WEIGHT —			
	CUSTOMER DRAWING			
		SCALE 5:1	SHEET 1 OF 1	REV L