



Chipsmall Limited consists of a professional team with an average of over 10 year of expertise in the distribution of electronic components. Based in Hongkong, we have already established firm and mutual-benefit business relationships with customers from,Europe,America and south Asia,supplying obsolete and hard-to-find components to meet their specific needs.

With the principle of “Quality Parts,Customers Priority,Honest Operation,and Considerate Service”,our business mainly focus on the distribution of electronic components. Line cards we deal with include Microchip,ALPS,ROHM,Xilinx,Pulse,ON,Everlight and Freescale. Main products comprise IC,Modules,Potentiometer,IC Socket,Relay,Connector.Our parts cover such applications as commercial,industrial, and automotives areas.

We are looking forward to setting up business relationship with you and hope to provide you with the best service and solution. Let us make a better world for our industry!



Contact us

Tel: +86-755-8981 8866 Fax: +86-755-8427 6832

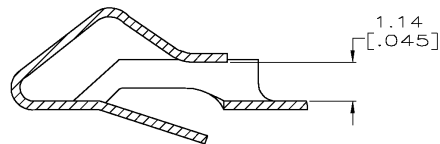
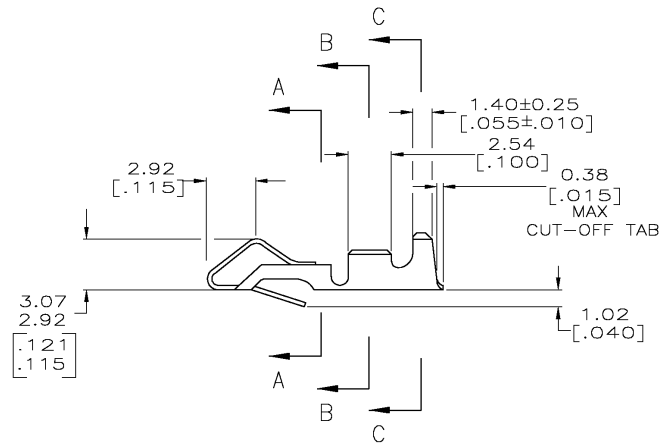
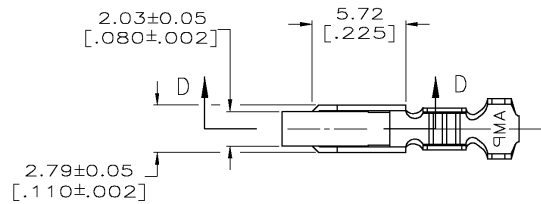
Email & Skype: info@chipsmall.com Web: www.chipsmall.com

Address: A1208, Overseas Decoration Building, #122 Zhenhua RD., Futian, Shenzhen, China



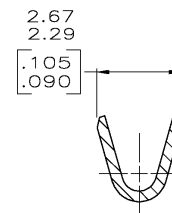
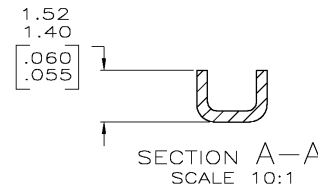
LOC		DISC		REVISIONS			
P	UTR	DESCRIPTION		DATE	DWN	APD	
E		REV PER ECN 0638-0383-03		21AUG03	SC	JE	

1. 0.00203 [.000080] MIN BRIGHT TIN-LEAD OVER
0.00127 [.000050] MIN NICKEL.
2. 0.00330 [.000130] MAX PRE-TIN.
3. WIRE RANGE: 0.2-0.9mm² (24-18 AWG).
INSULATION RANGE: 2.79 [.110] DIA MAX.
4. DIMENSIONS IN BRACKETS ARE IN INCHES.
5. 0.00203 [.000080] MIN BRIGHT TIN OVER
0.00127 [.000050] MIN NICKEL.

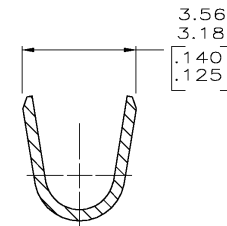


SECTION D-D
SCALE 10:1

METRIC



SECTION B-B
SCALE 10:1



SECTION C-C
SCALE 10:1

5	3-640706-1
2	640706-2
1	640706-1
FINISH	PART NO

THIS DRAWING IS A CONTROLLED DOCUMENT.		DWN S. CARPENTER 21AUG2003	Tyco Electronics Corporation Harrisburg, PA 17105	
DIMENSIONS: INCHES		CHK J. ELLIS 21AUG2003	RECEPTACLE, SL-156, LOOSE PIECE	
TOLERANCES UNLESS OTHERWISE SPECIFIED:		APD J. ELLIS 21AUG2003	SIZE A2	
0 PLC ± 1 PLC ± 2 PLC ± 0.13 [.005] 3 PLC ± 4 PLC ±		NAME J. ELLIS	CAGE CODE 00779	
ANGLES ±		APPLICATION SPEC	DRAWING NO 640706	
FINISH SEE TABLE		WEIGHT	RESTRICTED TO	
MATERIAL 0.33 [.013] BRASS		CUSTOMER DRAWING	SCALE 5:1	
			SHEET 1 OF 1	
			REV E	