



Chipsmall Limited consists of a professional team with an average of over 10 year of expertise in the distribution of electronic components. Based in Hongkong, we have already established firm and mutual-benefit business relationships with customers from,Europe,America and south Asia,supplying obsolete and hard-to-find components to meet their specific needs.

With the principle of “Quality Parts,Customers Priority,Honest Operation,and Considerate Service”,our business mainly focus on the distribution of electronic components. Line cards we deal with include Microchip,ALPS,ROHM,Xilinx,Pulse,ON,Everlight and Freescale. Main products comprise IC,Modules,Potentiometer,IC Socket,Relay,Connector.Our parts cover such applications as commercial,industrial, and automotives areas.

We are looking forward to setting up business relationship with you and hope to provide you with the best service and solution. Let us make a better world for our industry!



Contact us

Tel: +86-755-8981 8866 Fax: +86-755-8427 6832

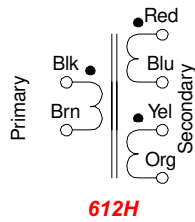
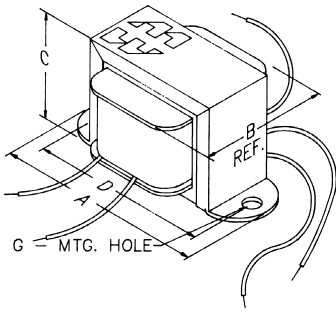
Email & Skype: info@chipsmall.com Web: www.chipsmall.com

Address: A1208, Overseas Decoration Building, #122 Zhenhua RD., Futian, Shenzhen, China

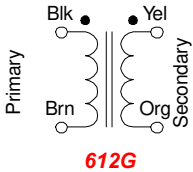


Chassis & P.C. Board Mount

PULSE TRANSFORMERS

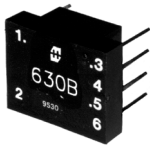


- Economical, open style, chassis mount.
- Mounting hole (G) - .187"
- Units are intended for pulse applications including thyristor / triac firing circuits.
- Flexible leads - 4" minimum.

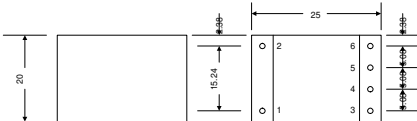


Cat. No.	Ratio	Circuit Max. Volts	Primary		D.C. Winding Resistance		Insulation RMS (Volts)	Wt. Oz.	Dimensions			
			Inductance mH (min.)	D.C. Res. (Ohms)	Sec. 1 (Ohms)	Sec. 2 (Ohms)			A	B	C	D
612G	1:1	600	6.6	0.87	0.87	-	4000	8.0	2.06	1.25	1.19	1.75
612H	1:1:1	600	1.5	0.45	0.42	0.49	4000	8.0	2.06	1.25	1.19	1.75

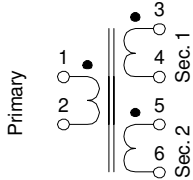
PULSE TRANSFORMERS



630 Series - Dimensions & Schematic



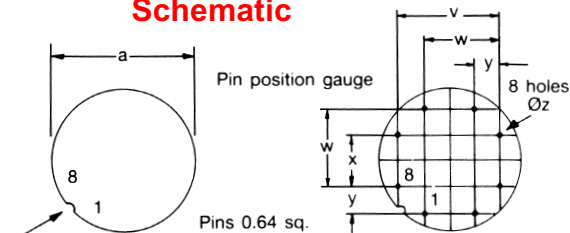
All Dimensions in mm
Pins 0.64 sq.



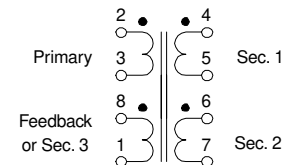
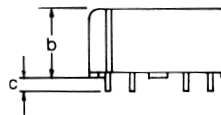
- These transformers are fully encapsulated in a high grade black molded case with a UL94V-O rating.
- They are intended mainly for thyristor / triac triggering applications.
- All units are voltage proof tested between windings at 2500V RMS for 1 minute, for a working voltage rating maximum of 440V RMS.
- Transformers with three or more windings can be series connected to obtain alternative ratios. (ie...a 1:1:1 type may be series connected by linking pins 4 & 5 in which case 3-6 are used as the primary winding to obtain a ratio of 2:1 etc.)

Cat. No.	Turns Ratio	Primary		Leakage Inductance uH (max)	Capacity pf. (max)	D.C. Winding Resistance (ohms)			
		Inductance mH (min.)	ET Constant V uS			Pri.	Sec. 1	Sec. 2	Sec. 3
630B	1:1	1	120	2.0	50	0.25	0.23	-	-
631B	1:1:1	1	120	3	40	0.25	0.22	0.28	-
632B	2:1:1	1	120	3.5	30	0.24	0.12	0.15	-
630C	1:1	4	240	5	55	0.86	0.83	-	-
631C	1:1:1	4	240	11	35	0.9	0.76	1.1	-
632C	2:1:1	4	240	11	35	0.84	0.38	0.5	-
630D	1:1	16.3	482	18	65	3.5	3.4	-	-
631D	1:1:1	16.3	482	40	40	3.6	3.1	4.2	-
632D	2:1:1	16.3	482	40	40	3.5	1.6	2.0	-
640A	2:1:1:1	10	370	38	32	2.3	1.1	1.3	1.0
640B	2:1:1:1	30	640	110	38	6.6	3.0	3.8	2.7
640C	2:1:1:1	100	1160	340	35	25.0	12.0	14.6	10.8
641A	2:1:1:1	10	890	28	65	0.45	0.2	0.26	0.19
641B	2:1:1:1	30	1520	75	70	1.2	0.5	0.65	0.46
641C	2:1:1:1	100	2760	190	190	5.2	2.4	2.9	2.2

640 Series - Dimensions & Schematic



Positions of pins 1 and 8 and type number marked on this face



Cat. Series No.	Tol.	Dimensions							
		a	b	c	v	w	x	y	z
640 Series	Max.	25.0	12.7	-	17.98	12.9	7.82	5.28	1.2
	Min.	-	-	4.0	17.58	12.47	7.42	4.88	1.1
641 Series	Max.	36.0	20.2	-	28.12	20.52	12.90	7.82	1.2
	Min.	-	-	4.0	27.72	20.12	12.47	7.42	1.1