



Chipsmall Limited consists of a professional team with an average of over 10 year of expertise in the distribution of electronic components. Based in Hongkong, we have already established firm and mutual-benefit business relationships with customers from,Europe,America and south Asia,supplying obsolete and hard-to-find components to meet their specific needs.

With the principle of "Quality Parts,Customers Priority,Honest Operation,and Considerate Service",our business mainly focus on the distribution of electronic components. Line cards we deal with include Microchip,ALPS,ROHM,Xilinx,Pulse,ON,Everlight and Freescale. Main products comprise IC,Modules,Potentiometer,IC Socket,Relay,Connector.Our parts cover such applications as commercial,industrial, and automotives areas.

We are looking forward to setting up business relationship with you and hope to provide you with the best service and solution. Let us make a better world for our industry!



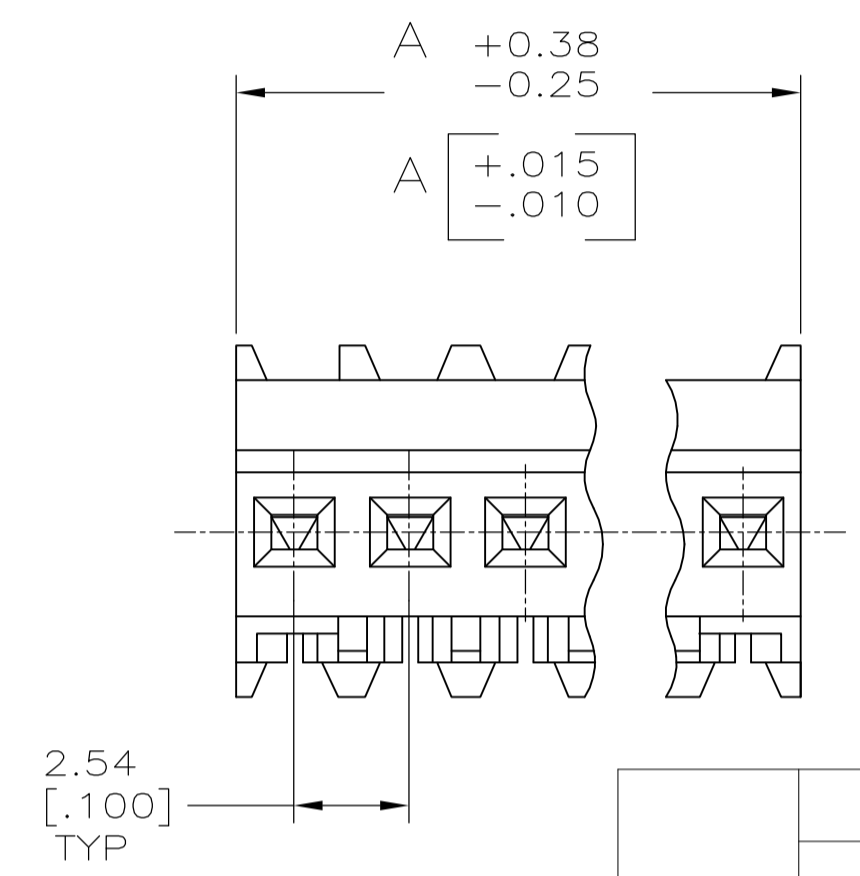
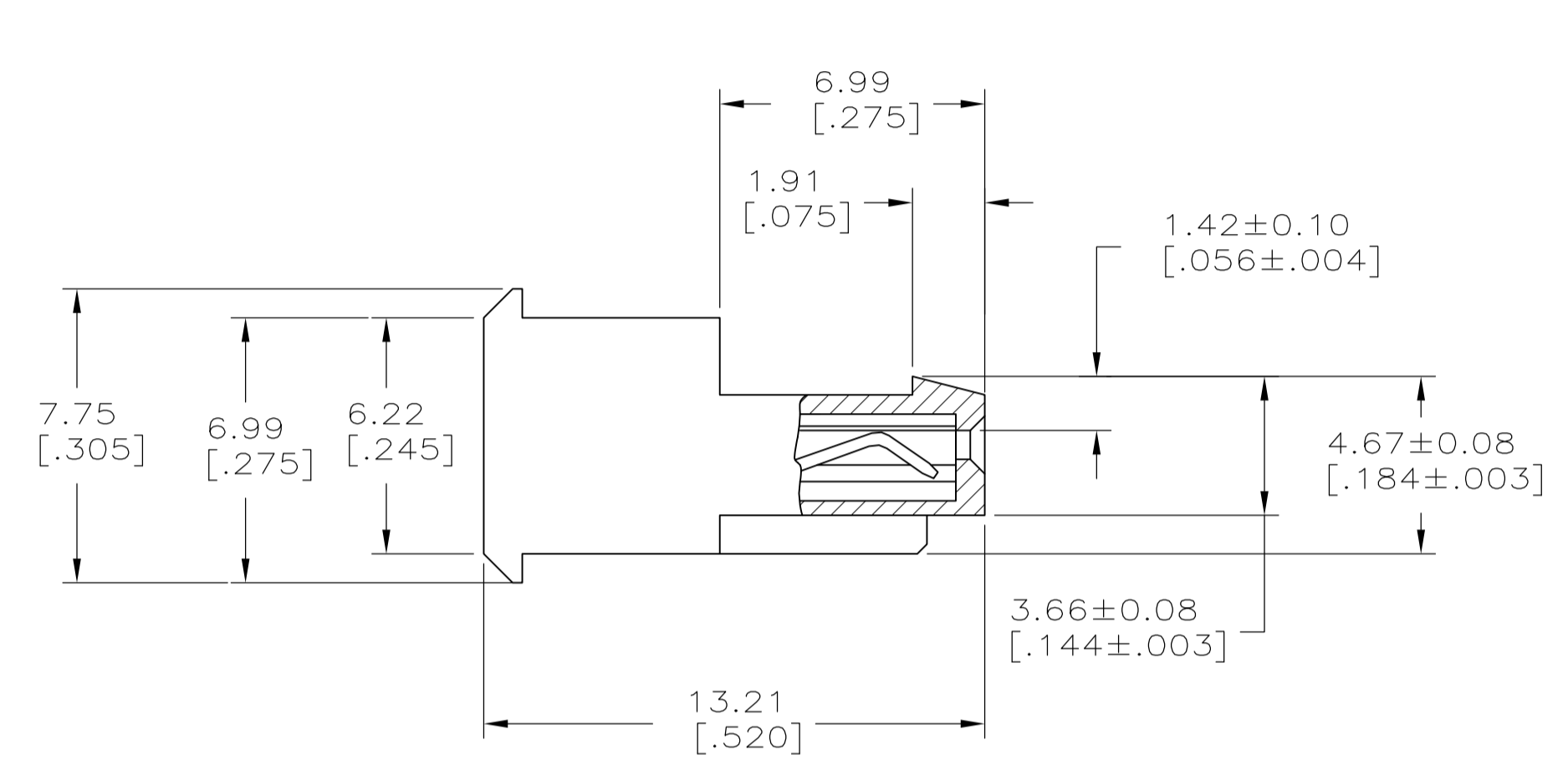
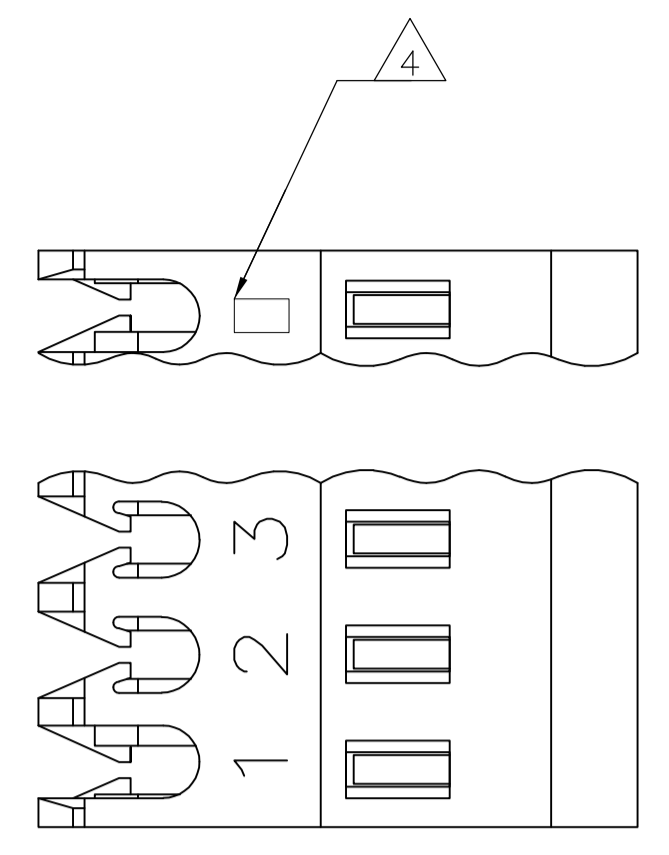
## Contact us

Tel: +86-755-8981 8866 Fax: +86-755-8427 6832

Email & Skype: info@chipsmall.com Web: www.chipsmall.com

Address: A1208, Overseas Decoration Building, #122 Zhenhua RD., Futian, Shenzhen, China





- 1 MATERIAL: CONNECTOR-NYLON UL94V-2.  
CONTACTS-0.30 [.012] THICK COPPER ALLOY  
0.00076 [.000030] GOLD IN OR 0.00076[.000030]  
TOTAL GOLD FLASH OVER PALLADIUM NICKEL,  
PER TE CONNECTIVITY'S DISCRETION, CONTACT AREA  
WITH BRIGHT TIN-LEAD FOR 641244-2 THRU  
1-641244-4, MATTE WHISKER MITIGATED TIN  
FOR 3-641244-2 THRU 4-641244-4 OVER  
NICKEL UNDERPLATE.
- 2 CONTACTS ACCEPT 28 AWG WIRE WITH 1.52 [.060] MAX INSULATION DIAMETER.
- 3 CONTACTS MUST ACCEPT 0.64±0.03 [.025±.001] SQUARE POST AND REMAIN LOCKED IN POSITION.
- 4 IDENTIFICATION NUMBER FOR LAST CIRCUIT MAY NOT APPEAR ON ALL ASSEMBLIES.
- 5 DIMENSIONS IN BRACKETS ARE IN INCHES.
- 6 HOUSING FEATURES ARE: FEED THRU WITH LOCKING RAMP.
- 7 OBSOLETE PARTS: OBSOLETE CIS STREAMLINING PER D.RENAUD/D.SINISI
- 8 GREEN COLOR STRIPE ON HOUSING (NOT SHOWN) MAY RUN DOWN BETWEEN RIBS.

71.12 [2.800]	28	5-641244-8
68.58 [2.700]	27	5-641244-7
66.04 [2.600]	26	5-641244-6
63.50 [2.500]	25	5-641244-5
60.96 [2.400]	24	5-641244-4
58.42 [2.300]	23	5-641244-3
55.88 [2.200]	22	5-641244-2
53.34 [2.100]	21	5-641244-1
50.80 [2.000]	20	5-641244-0
48.26 [1.900]	19	4-641244-9
45.72 [1.800]	18	4-641244-8
43.18 [1.700]	17	4-641244-7
40.64 [1.600]	16	4-641244-6
38.10 [1.500]	15	4-641244-5
35.56 [1.400]	14	4-641244-4
33.02 [1.300]	13	4-641244-3
30.48 [1.200]	12	4-641244-2
27.94 [1.100]	11	4-641244-1
25.40 [1.000]	10	4-641244-0
22.86 [.900]	9	3-641244-9
20.32 [.800]	8	3-641244-8
17.78 [.700]	7	3-641244-7
15.24 [.600]	6	3-641244-6
12.70 [.500]	5	3-641244-5
10.16 [.400]	4	3-641244-4
7.62 [.300]	3	3-641244-3
5.08 [.200]	2	3-641244-2
DIM A	NO.OF POSN	ASSEMBLY

71.12 [2.800]	28	2-641244-8
68.58 [2.700]	27	2-641244-7
66.04 [2.600]	26	2-641244-6
63.50 [2.500]	25	2-641244-5
60.96 [2.400]	24	2-641244-4
58.42 [2.300]	23	2-641244-3
55.88 [2.200]	22	2-641244-2
53.34 [2.100]	21	2-641244-1
50.80 [2.000]	20	2-641244-0
48.26 [1.900]	19	1-641244-9
45.72 [1.800]	18	1-641244-8
43.18 [1.700]	17	1-641244-7
40.64 [1.600]	16	1-641244-6
38.10 [1.500]	15	1-641244-5
35.56 [1.400]	14	1-641244-4
33.02 [1.300]	13	1-641244-3
30.48 [1.200]	12	1-641244-2
27.94 [1.100]	11	1-641244-1
25.40 [1.000]	10	1-641244-0
22.86 [.900]	9	641244-9
20.32 [.800]	8	641244-8
17.78 [.700]	7	641244-7
15.24 [.600]	6	641244-6
12.70 [.500]	5	641244-5
10.16 [.400]	4	641244-4
7.62 [.300]	3	641244-3
5.08 [.200]	2	641244-2
DIM A	NO.OF POSN	ASSEMBLY

LEAD FREE

SUPERCEDED

CONTAINS LEAD

THIS DRAWING IS A CONTROLLED DOCUMENT.

DIMENSIONS: mm [INCHES]	TOLERANCES UNLESS OTHERWISE SPECIFIED:	DIN S. HOOVER 28-DEC-2004	APVD D. ROSSI 28-DEC-2004	NAME
0 PLC ±	1 PLC ±	2 PLC ±	3 PLC ±	4 PLC ±
ANGLES ±				
MATERIAL	FINISH	SIZE	CAGE CODE	DRAWING NO
		A1	00779	641244
CUSTOMER DRAWING		SCALE	SHEET	REV
		6:1	1 of 1	M

**STE** TE Connectivity  
MTA .100 CONNECTOR ASSEMBLY, 28 AWG, STANDARD